



# LIZ Bulletin

DFS Situation and Information Centre

Week 46

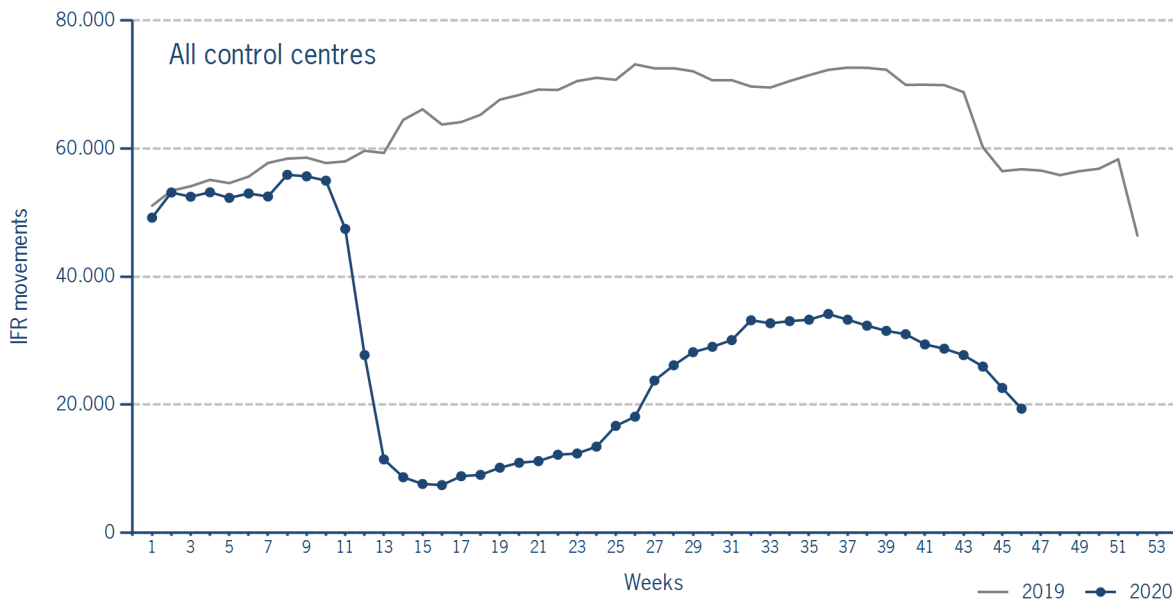
9 NOV 2020 - 15 NOV 2020

Version 23.11.2020

## IFR flights in the Federal Republic of Germany

IFR movements (entries, exits, overflights and domestics) in all control sectors with a German designator.

	2020	2019	Trend
Week 46	19.370	56.771	-65,9%
Cumulated Weeks	1.351.283	2.998.989	-54,9%

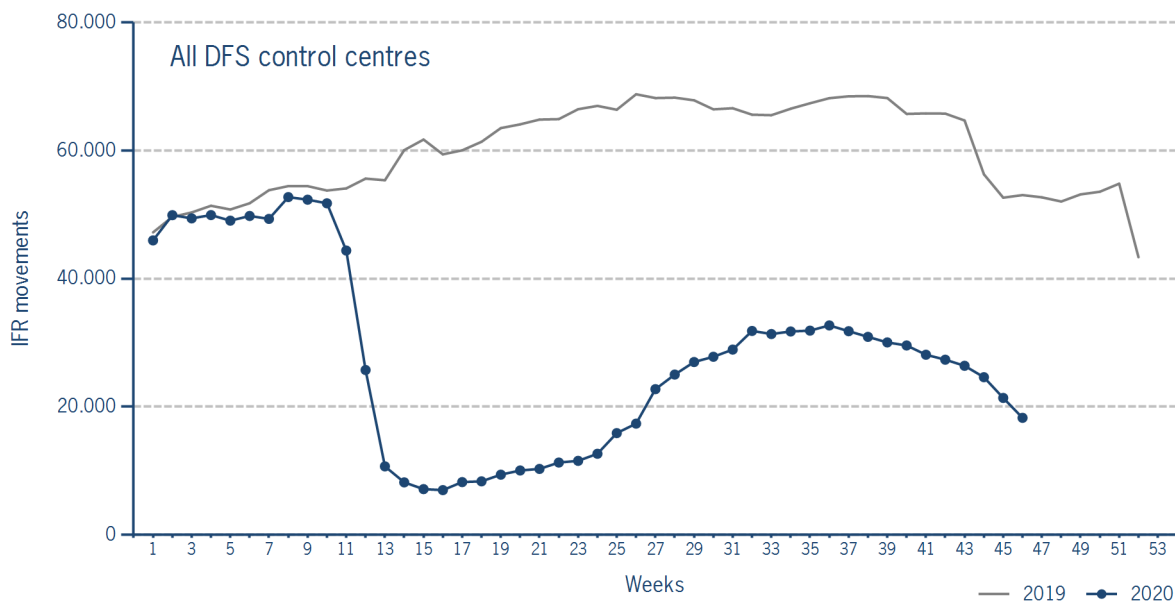


Please note: This count covers the traffic in the area build by all control sectors with a German designator („ED“), regardless of the service provider, including civil and military traffic in sectors controlled by DFS and Maastricht UAC (Maastricht-Hannover sectors). The area counted is composed of modular control sectors designed for ATC purposes with partly cross border structures and is therefore not identical to the political border of the Federal Republic of Germany or the national Flight Information Region (FIR).

### IFR flights controlled by DFS

IFR movements (entries, exits, overflights and domestics) in control sectors controlled by DFS.

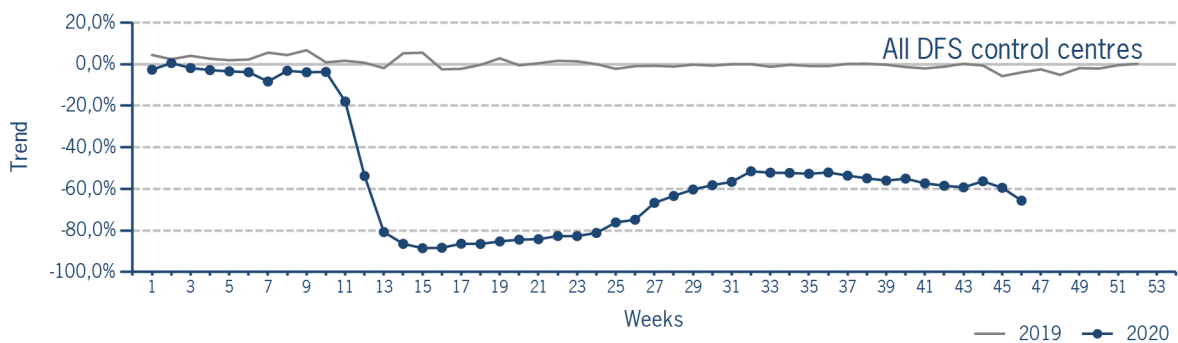
	2020	2019	Trend
<b>Week 46</b>	18.255	53.051	-65,6%
<b>Cumulated Weeks</b>	1.277.480	2.811.253	-54,6%



Please note: This count covers the traffic in the area build by control sectors of DFS control centres, including civil and military traffic. Traffic in Maastricht UAC (Maastricht-Hannover sectors) is not counted.

### IFR flights controlled by DFS - trend

Trend in the number of IFR movements (entries, exits, overflights and domestics) in control sectors controlled by DFS.

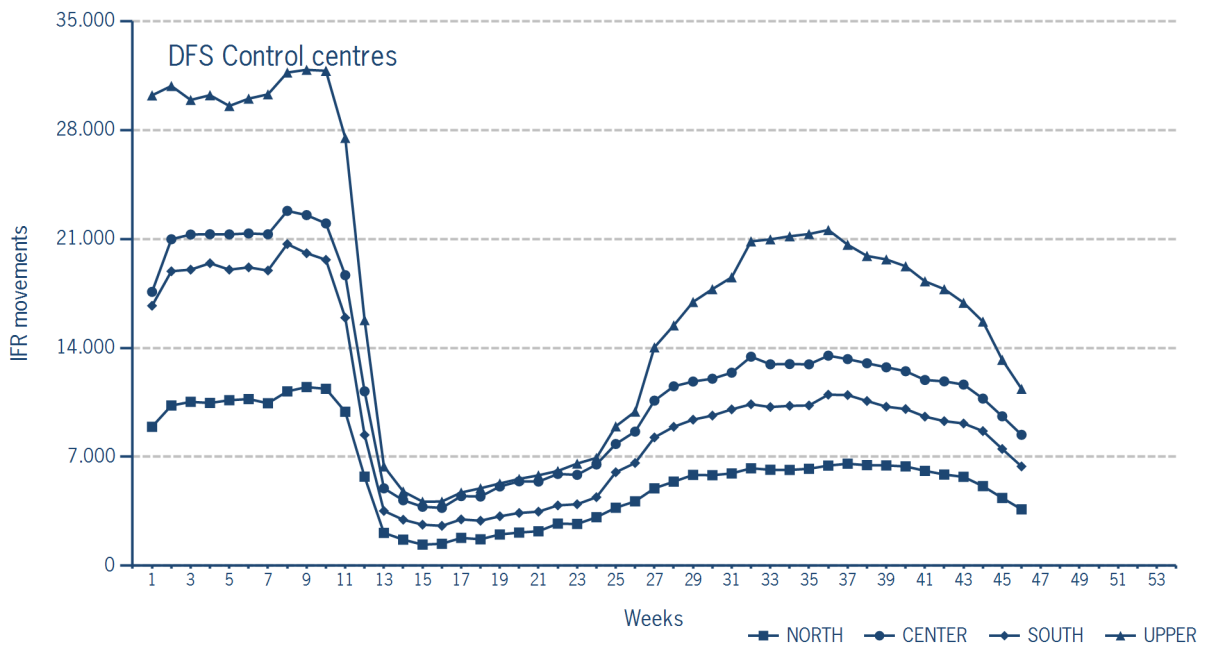


### IFR flights controlled by DFS - in detail

IFR movements (entries, exits, overflights and domestics) controlled by DFS at the different control centres.

	NORTH	CENTER	SOUTH	UPPER
<b>Week 46</b>	3.624	8.416	6.382	11.368
<b>Trend</b>	-68,8%	-63,8%	-68,5%	-63,5%
<b>Cumulated Weeks</b>	270.323	558.543	459.337	795.415
<b>Trend</b>	-54,9%	-53,4%	-56,9%	-51,2%

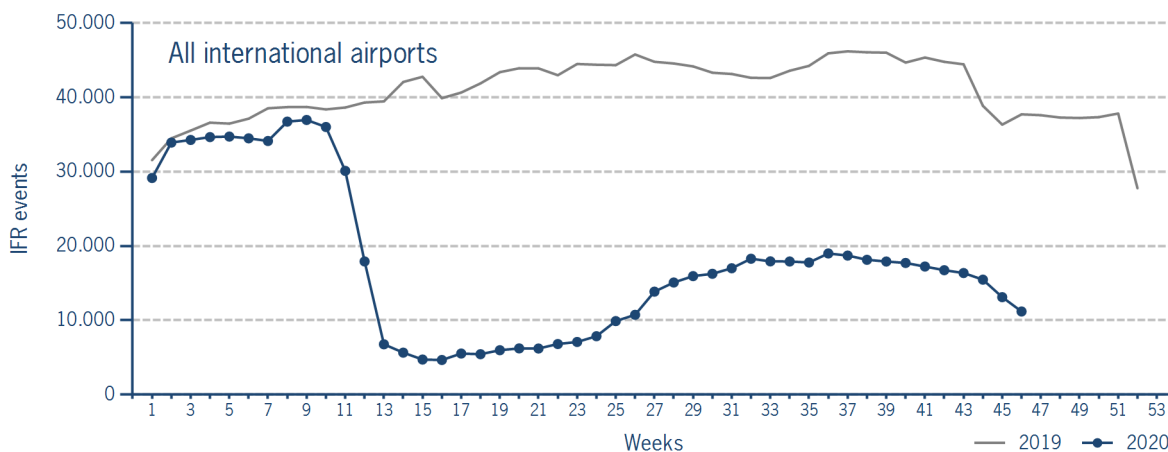
Please note: The trend numbers compare counts of the airspaces in their current configuration to the count of the same airspace in 2019.



### IFR flights at international German airports

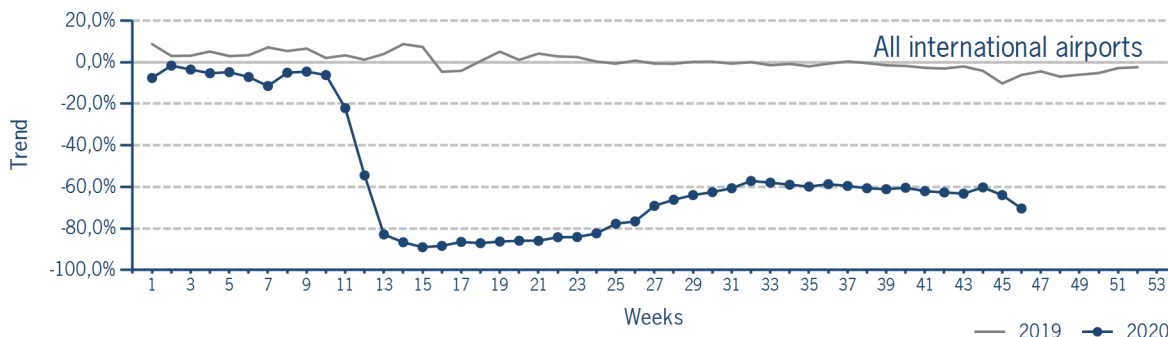
IFR events (take-offs and landings) at the international DFS towers in the Federal Republic of Germany.

	2020	2019	Trend
<b>Week 46</b>	11.187	37.710	-70,3%
<b>Cumulated Weeks</b>	818.229	1.913.218	-57,2%



### IFR flights at international German airports - trend

Trend in the number of IFR events (take-offs and landings) at the international DFS towers in the Federal Republic of Germany.



### IFR flights at international German airports - airport category

IFR events (take-offs and landings) at the international DFS towers in the Federal Republic of Germany differentiated by Hub Gateways (HUB), International Access Airports 1 (IAA1) and International Access Airports 2 (IAA2).

	HUB	IAA1	IAA2
<b>Week 46</b>	6.196	4.396	595
<b>Trend*</b>	-70,0%	-71,7%	-61,3%
<b>Cumulated Weeks*</b>	408.737	370.534	38.958
<b>Trend*</b>	-60,5%	-54,0%	-47,2%

\*Please note: Berlin-Schönefeld used to be listed as IAA1. Berlin-Brandenburg is listed as a HUB.

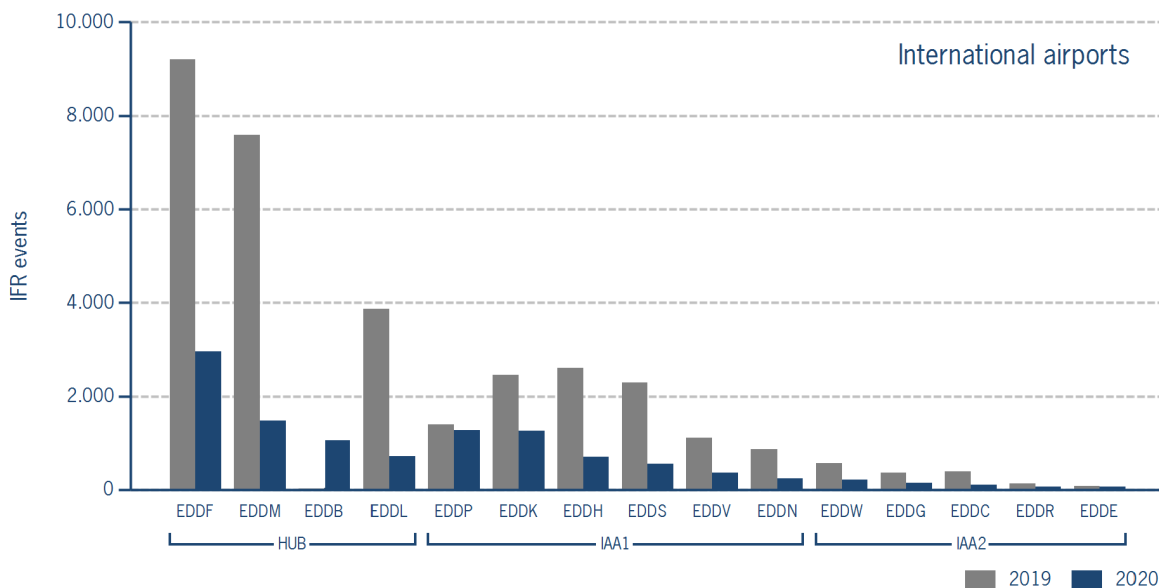
**IFR flights at international German airports - in detail**

IFR events (take-offs and landings) at the different international DFS towers in the Federal Republic of Germany.

		Week 46	Trend	Week 1 - 46	Trend
<b>HUB</b>					
EDDB	Berlin-Brandenburg	1.054	N/A	1.698	N/A
EDDF	Frankfurt/Main	2.954	-67,9%	194.418	-57,8%
EDDL	Düsseldorf	715	-81,5%	74.893	-63,1%
EDDM	München	1.473	-80,6%	137.543	-62,9%

<b>IAA1</b>					
EDDB	Berlin-Schönefeld	0	N/A	35.367	N/A
EDDH	Hamburg	701	-73,0%	56.514	-57,8%
EDDK	Köln/Bonn	1.262	-48,5%	71.863	-43,7%
EDDN	Nürnberg	243	-71,8%	19.079	-57,0%
EDDP	Leipzig/Halle	1.270	-8,8%	54.151	-19,3%
EDDS	Stuttgart	553	-75,9%	46.977	-60,7%
EDDT	Berlin-Tegel	0	N/A	61.283	N/A
EDDV	Hannover	367	-67,0%	25.485	-56,6%

<b>IAA2</b>					
EDDC	Dresden	105	-73,5%	8.339	-54,8%
EDDE	Erfurt/Weimar	63	-17,1%	3.263	-24,1%
EDDG	Münster/Osnabrück	145	-60,3%	9.701	-42,9%
EDDR	Saarbrücken	65	-50,4%	3.725	-48,3%
EDDW	Bremen	217	-61,9%	13.930	-48,1%



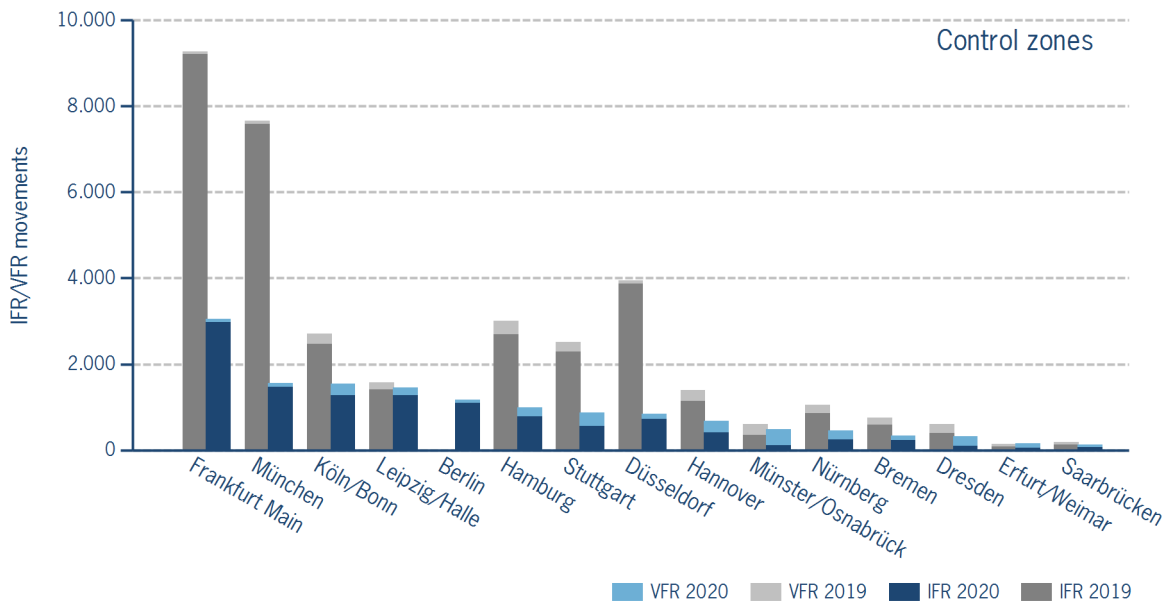
IFR/VFR flights in control zones of DFS towers

IFR/VFR movements (entries, exits, overflights and domestics) at the different control zones of international DFS towers.

	Week 46	Trend	Week 1 - 46	Trend
Berlin	1.176	N/A	1.975	N/A
Berlin-Schönefeld	0	N/A	48.820	N/A
Berlin-Tegel	0	N/A	69.431	N/A
Bremen	343	-54,4%	24.300	-36,7%
Dresden	317	-47,9%	20.347	-35,5%
Düsseldorf	847	-78,6%	81.950	-60,9%
Erfurt/Weimar	161	11,0%	8.902	-21,8%
Frankfurt Main	3.055	-67,0%	199.934	-57,1%
Hamburg	998	-66,7%	79.684	-49,7%
Hannover	676	-51,8%	45.736	-41,1%
Köln/Bonn	1.545	-42,9%	84.765	-40,0%
Leipzig/Halle	1.449	-8,4%	65.460	-17,1%
München	1.563	-79,6%	142.851	-62,0%
Münster/Osnabrück	492	-18,3%	26.347	-22,3%
Nürnberg	452	-57,3%	30.664	-46,8%
Saarbrücken	133	-26,5%	7.564	-33,4%
Stuttgart	877	-65,2%	60.911	-54,7%

Additional information:

Münster reported no glider movements for the current week, i.e. 3.154 glider movements for the cumulated year.



### IFR flights at regional German airports - in detail

IFR events (take-offs and landings) at the different regional towers in the Federal Republic of Germany with control zone and barely any PPR.

	2020	2019	Trend
<b>Week 46</b>	1.634	2.956	-44,7%
<b>Cumulated Weeks</b>	95.732	146.383	-34,6%

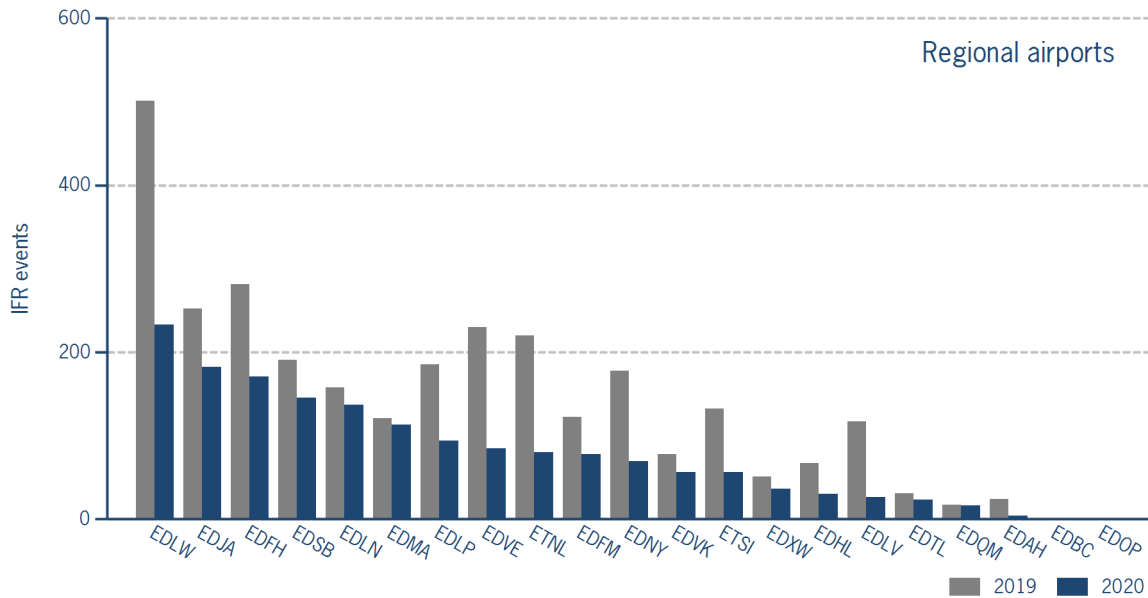
	Week 46	Trend	Week 1 - 46	Trend
EDAH Heringsdorf	4	-83,3%	541	-40,7%
EDBC Magdeburg/Cochstedt	0	N/A	0	-100,0%
EDFH Frankfurt-Hahn	171	-39,1%	9.993	-31,7%
EDFM Mannheim City	78	-36,1%	4.222	-29,6%
EDHL Lübeck-Blankensee	30	-55,2%	2.145	-15,0%
EDJA Memmingen	182	-27,8%	8.965	-33,9%
EDLN Mönchengladbach	137	-13,3%	6.106	5,1%
EDLP Paderborn/Lippstadt	94	-49,2%	5.110	-58,3%
EDLV Niederrhein	26	-77,8%	3.368	-61,1%
EDLW Dortmund	233	-53,5%	14.950	-30,1%
EDMA Augsburg	113	-6,6%	6.128	-7,8%
EDNY Friedrichshafen	69	-61,2%	4.117	-57,8%
EDOP Schwerin-Parchim	0	N/A	0	-100,0%
EDQM Hof-Plauen	16	-5,9%	1.235	-8,2%
EDSB Karlsruhe/Baden-Baden	145	-24,1%	7.710	-31,8%
EDTL Lahr	23	-25,8%	1.086	-22,9%
EDVE Braunschweig-Wolfsburg	85	-63,0%	4.745	-42,1%
EDVK Kassel-Calden	56	-28,2%	3.455	-20,6%
EDXW Sylt	36	-29,4%	4.840	-12,5%
ETNL Laage	80	-63,6%	4.467	-40,9%
ETSI Ingolstadt/Manching	56	-57,6%	2.549	-43,8%

\*The value is of limited conclusiveness (OLC).

Please note: The airport Magdeburg-Cochstedt (EDBC) is currently closed and the airport Sylt (EDXW) is now assigned to Austro Control.

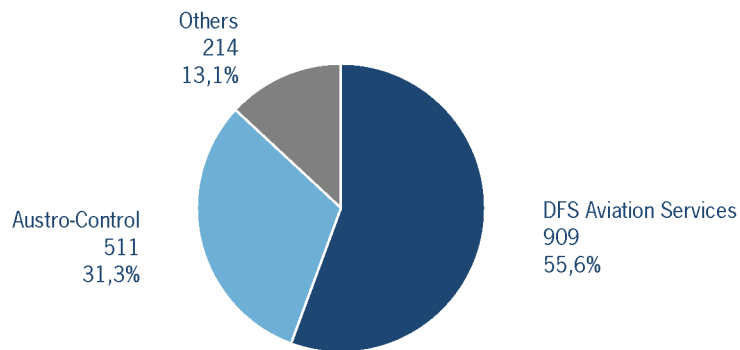
### IFR flights at regional German airports - in detail

IFR events (take-offs and landings) at the different regional towers in the Federal Republic of Germany with control zone and barely any PPR.



### IFR flights at regional German airports - air traffic service providers

Percentage of IFR events (take-offs and landings) at the regional towers in the Federal Republic of Germany differentiated between DFS Aviation Services, Austro Control and other providers.



- DFS Aviation Services: Dortmund (EDLW), Friedrichshafen (EDNY), Karlsruhe/Baden-Baden (EDSB), Lahr (EDTL), Magdeburg/Cochstedt (EDBC), Memmingen (EDJA), Mönchengladbach (EDLN), Niederrhein (EDLV), Paderborn/Lippstadt (EDLP)
- Austro Control: Augsburg (EDMA), Braunschweig-Wolfsburg (EDVE), Frankfurt-Hahn (EDFH), Heringsdorf (EDAH), Hof-Plauen (EDQM), Kassel-Calden (EDVK), Lübeck-Blankensee (EDHL), Schwerin-Parchim (EDOP), Sylt (EDXW)
- Others: Ingolstadt/Manching (ETSI), Laage (ETNL), Mannheim City (EDFM)



## ATFM Arrival Delay

(Data Source: NM statistics, DFS LIZ)

ATFM Arrival Delay with reference to the relevant airport, in minutes per IFR arrival.

*ATFM Arrival Delay:*

*sum of all arrival ATFM delay divided by the sum of all inbound flights for the particular traffic volume*

Airports		ATC Delay [min/arrival]	non ATC Delay [min/arrival]
	All Airports	0	0,1253
EDDP	Leipzig/Halle	0	1,1125

Please note: The ATFM delay data are provided by NM statistics. Due to internal distribution of the ATFM delay, data are modified by CC/FC and TWR/M. The inbound flight information is based on LIZ statistics.

All Airports means all international German airports: Berlin-Brandenburg (EDDB), Berlin-Tegel (EDDT), Bremen (EDDW), Dresden (EDDC), Düsseldorf (EDDL), Erfurt/Weimar (EDDE), Frankfurt/Main (EDDF), Hamburg (EDDH), Hannover (EDDV), Köln/Bonn (EDDK), Leipzig/Halle (EDDP), München (EDDM), Münster/Osnabrück (EDDG), Nürnberg (EDDN), Saarbrücken (EDDR), Stuttgart (EDDS)