



LIZ Bulletin

DFS Situation and Information Centre

Week 41

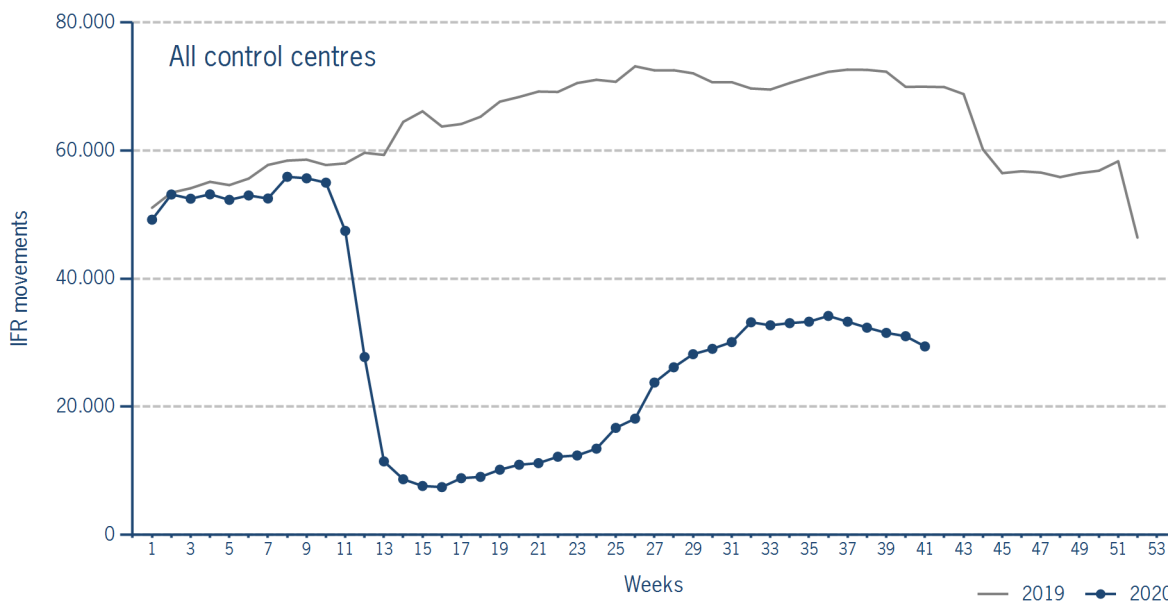
5 OCT 2020 - 11 OCT 2020

Version 13.10.2020

IFR flights in the Federal Republic of Germany

IFR movements (entries, exits, overflights and domestics) in all control sectors with a German designator.

	2020	2019	Trend
Week 41	29.408	69.977	-58,0%
Cumulated Weeks	1.226.869	2.686.806	-54,3%

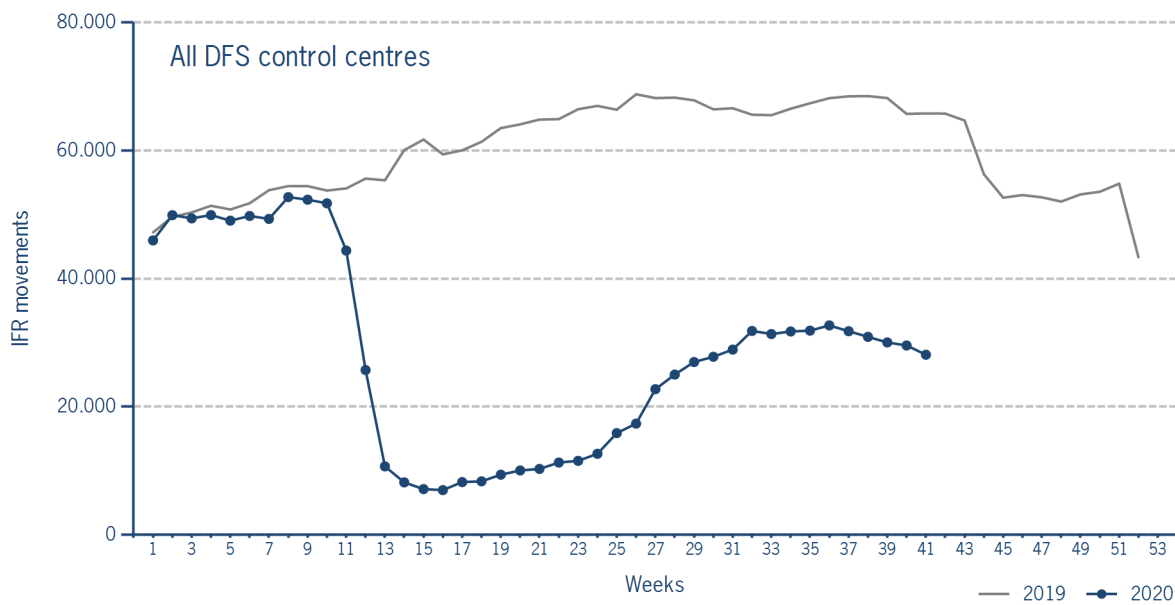


Please note: This count covers the traffic in the area build by all control sectors with a German designator („ED“), regardless of the service provider, including civil and military traffic in sectors controlled by DFS and Maastricht UAC (Maastricht-Hannover sectors). The area counted is composed of modular control sectors designed for ATC purposes with partly cross border structures and is therefore not identical to the political border of the Federal Republic of Germany or the national Flight Information Region (FIR).

IFR flights controlled by DFS

IFR movements (entries, exits, overflights and domestics) in control sectors controlled by DFS.

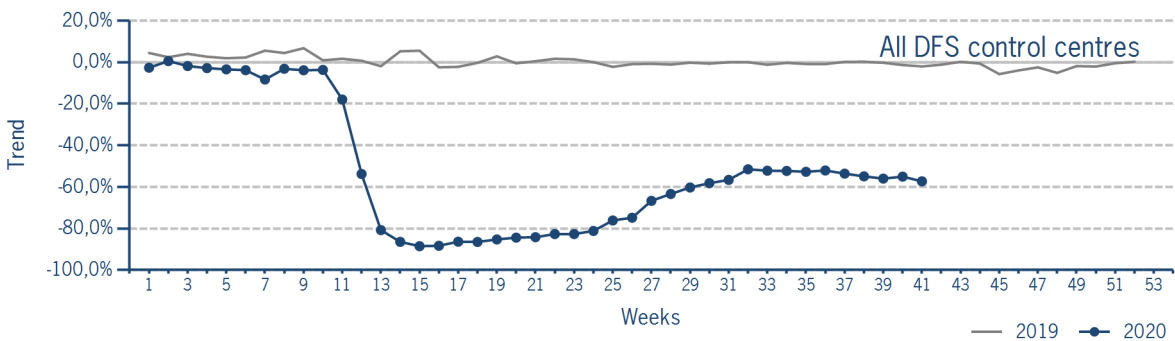
	2020	2019	Trend
Week 41	28.115	65.809	-57,3%
Cumulated Weeks	1.159.532	2.518.775	-54,0%



Please note: This count covers the traffic in the area build by control sectors of DFS control centres, including civil and military traffic. Traffic in Maastricht UAC (Maastricht-Hannover sectors) is not counted.

IFR flights controlled by DFS - trend

Trend in the number of IFR movements (entries, exits, overflights and domestics) in control sectors controlled by DFS.

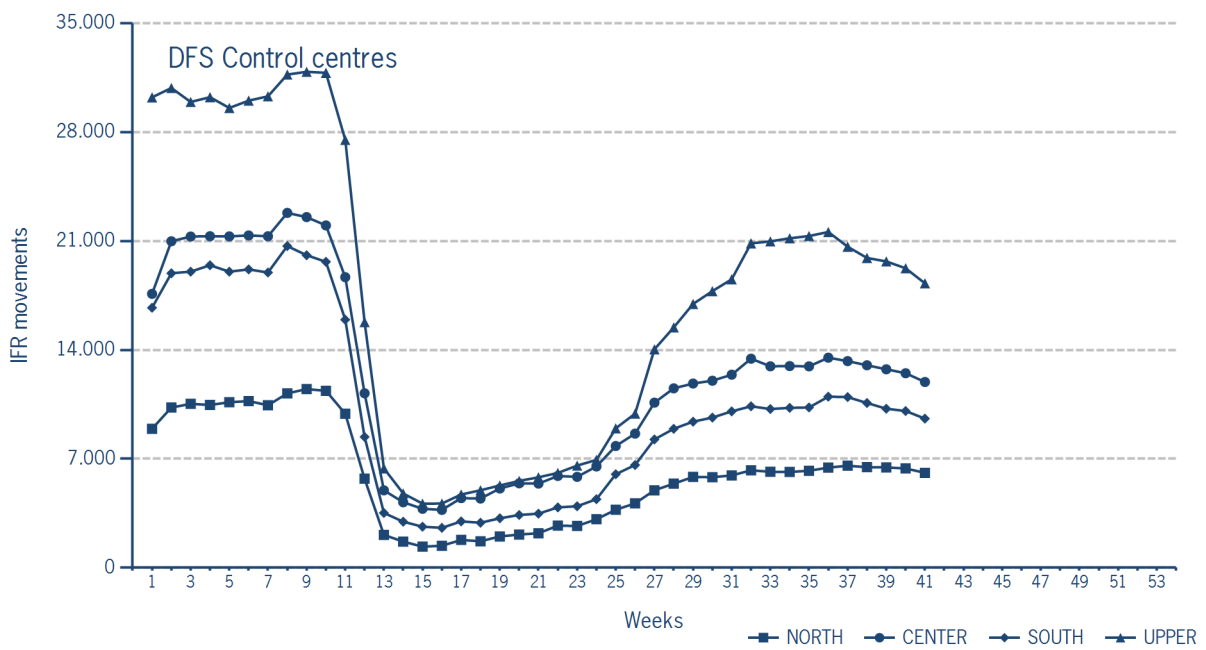


IFR flights controlled by DFS - in detail

IFR movements (entries, exits, overflights and domestics) controlled by DFS at the different control centres.

	NORTH	CENTER	SOUTH	UPPER
Week 41	6.101	11.940	9.584	18.280
Trend	-56,7%	-57,8%	-62,6%	-50,3%
Cumulated Weeks	245.651	506.285	418.358	720.434
Trend	-54,2%	-52,7%	-56,2%	-50,7%

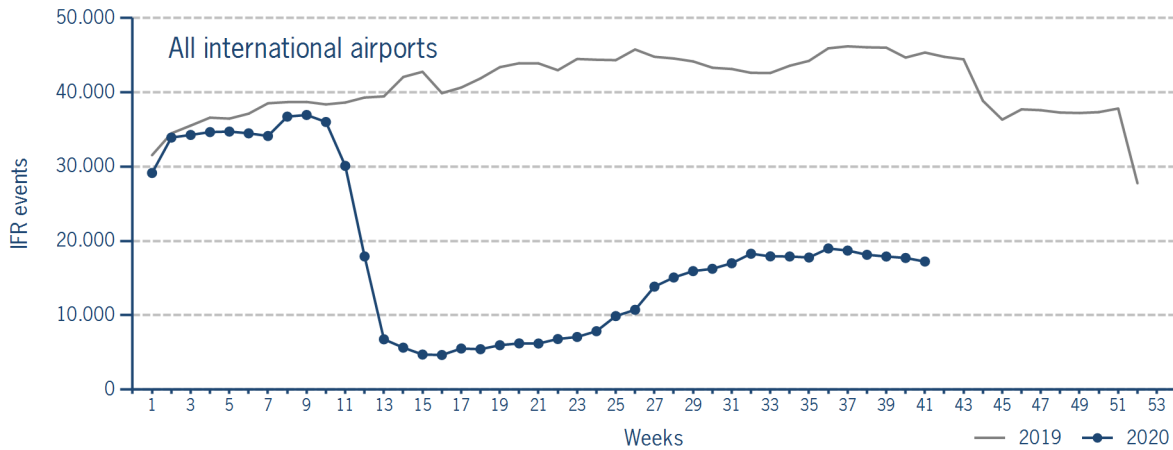
Please note: The trend numbers compare counts of the airspaces in their current configuration to the count of the same airspace in 2019.



IFR flights at international German airports

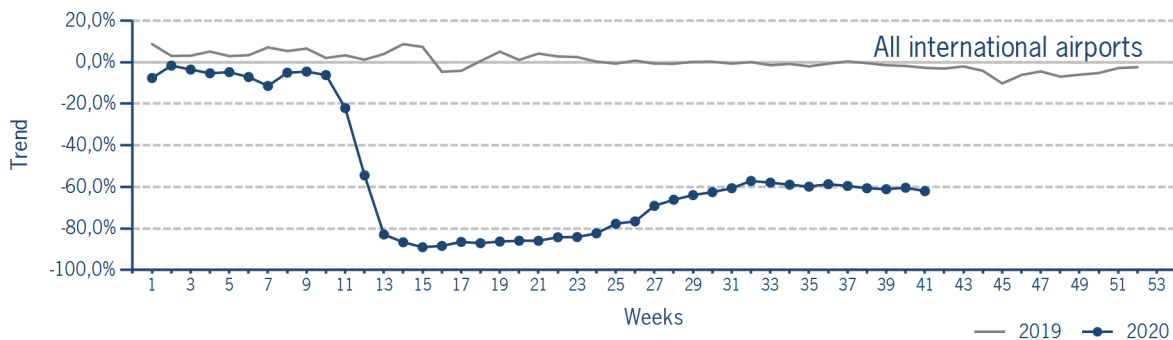
IFR events (take-offs and landings) at the international DFS towers in the Federal Republic of Germany.

	2020	2019	Trend
Week 41	17.235	45.357	-62,0%
Cumulated Weeks	745.356	1.711.097	-56,4%



IFR flights at international German airports - trend

Trend in the number of IFR events (take-offs and landings) at the international DFS towers in the Federal Republic of Germany.



IFR flights at international German airports - airport category

IFR events (take-offs and landings) at the international DFS towers in the Federal Republic of Germany differentiated by Hub Gateways (HUB), International Access Airports 1 (IAA1) and International Access Airports 2 (IAA2).

	HUB	IAA1	IAA2
Week 41	7.993	8.297	945
Trend	-67,0%	-56,9%	-50,3%
Cumulated Weeks	372.440	338.120	34.796
Trend	-59,8%	-53,0%	-46,6%

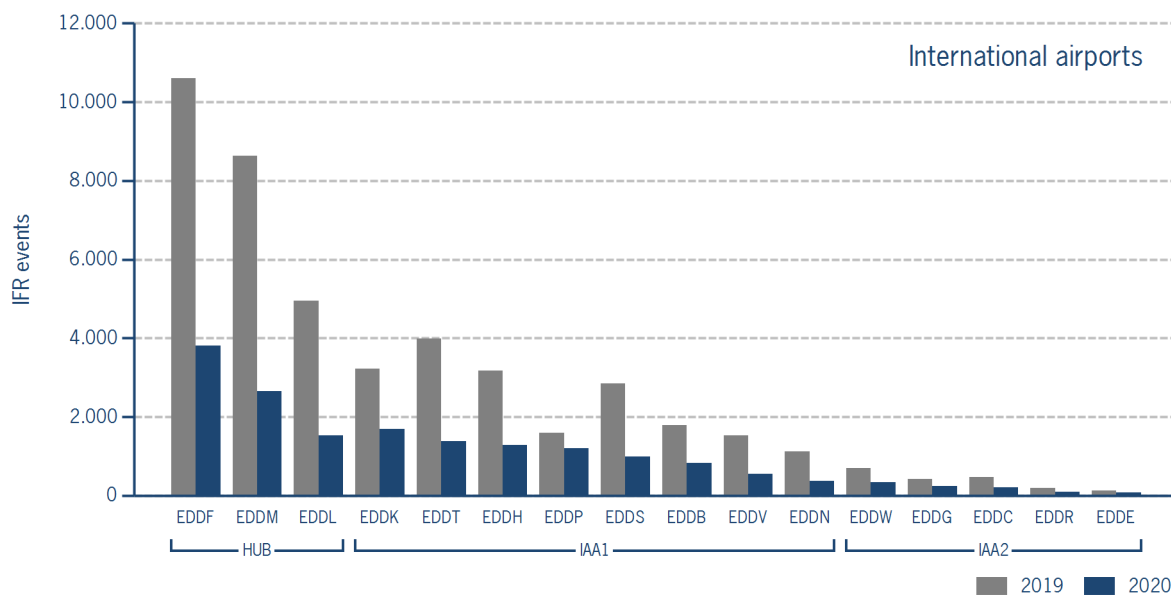
IFR flights at international German airports - in detail

IFR events (take-offs and landings) at the different international DFS towers in the Federal Republic of Germany.

		Week 41	Trend	Week 1 - 41	Trend
HUB					
EDDF	Frankfurt/Main	3.809	-64,1%	176.663	-57,2%
EDDL	Düsseldorf	1.530	-69,1%	69.372	-61,8%
EDDM	München	2.654	-69,2%	126.405	-61,9%

		Week 41	Trend	Week 1 - 41	Trend
IAA1					
EDDB	Berlin-Schönefeld	823	-54,1%	33.056	-54,4%
EDDH	Hamburg	1.283	-59,7%	51.553	-57,0%
EDDK	Köln/Bonn	1.696	-47,4%	64.622	-43,3%
EDDN	Nürnberg	379	-66,4%	17.525	-55,6%
EDDP	Leipzig/Halle	1.200	-24,7%	47.927	-19,6%
EDDS	Stuttgart	989	-65,2%	43.068	-59,7%
EDDT	Berlin-Tegel	1.374	-65,5%	57.230	-63,1%
EDDV	Hannover	553	-63,7%	23.139	-55,9%

		Week 41	Trend	Week 1 - 41	Trend
IAA2					
EDDC	Dresden	201	-56,9%	7.479	-54,5%
EDDE	Erfurt/Weimar	80	-38,5%	2.905	-22,9%
EDDG	Münster/Osnabrück	242	-42,5%	8.617	-42,3%
EDDR	Saarbrücken	87	-54,9%	3.272	-49,0%
EDDW	Bremen	335	-51,5%	12.523	-47,0%



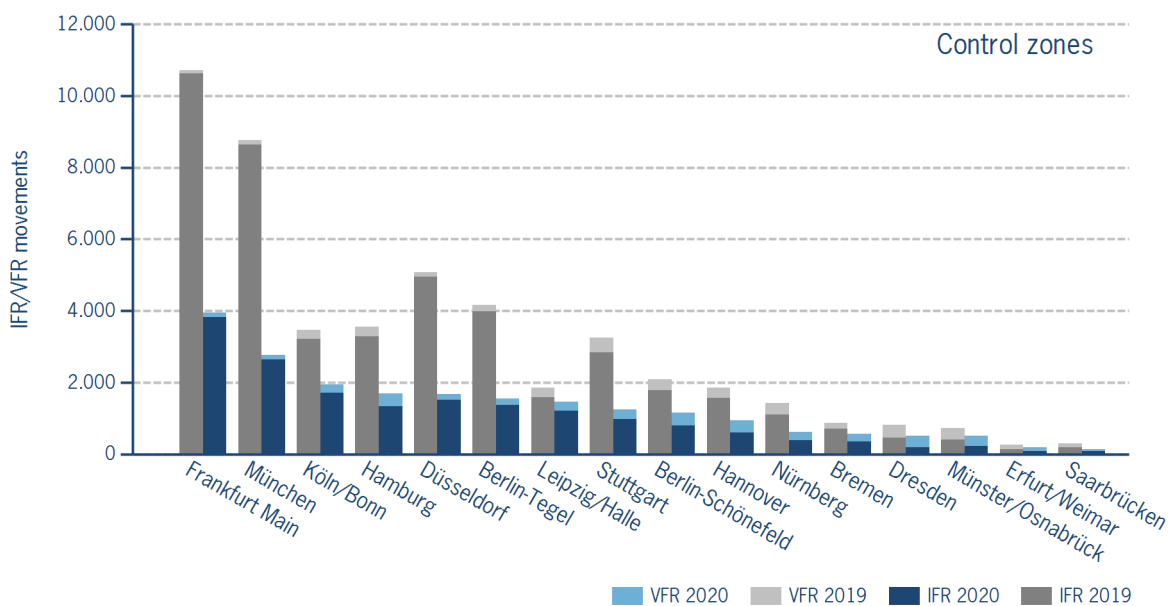
IFR/VFR flights in control zones of DFS towers

IFR/VFR movements (entries, exits, overflights and domestics) at the different control zones of international DFS towers.

	Week 41	Trend	Week 1 - 41	Trend
Berlin-Schönefeld	1.163	-44,4%	45.556	-46,8%
Berlin-Tegel	1.556	-62,6%	64.632	-60,1%
Bremen	573	-34,1%	21.870	-36,1%
Dresden	519	-36,2%	18.355	-35,4%
Düsseldorf	1.669	-67,1%	75.706	-59,6%
Erfurt/Weimar	188	-28,8%	7.950	-23,1%
Frankfurt Main	3.948	-63,1%	181.504	-56,5%
Hamburg	1.699	-52,2%	72.555	-49,0%
Hannover	936	-49,3%	41.244	-40,8%
Köln/Bonn	1.945	-44,0%	76.062	-39,7%
Leipzig/Halle	1.452	-21,7%	58.071	-17,7%
München	2.771	-68,4%	131.260	-61,0%
Münster/Osnabrück	515	-29,2%	23.441	-22,8%
Nürnberg	619	-56,6%	27.929	-45,8%
Saarbrücken	141	-52,7%	6.646	-35,3%
Stuttgart	1.239	-61,9%	55.391	-54,1%

Additional information:

Münster reported no glider movements for the current week, i.e. 3.154 glider movements for the cumulated year.



IFR flights at regional German airports - in detail

IFR events (take-offs and landings) at the different regional towers in the Federal Republic of Germany with control zone and barely any PPR.

	2020	2019	Trend
Week 41	2.427	3.568	-32,0%
Cumulated Weeks	85.158	130.342	-34,7%

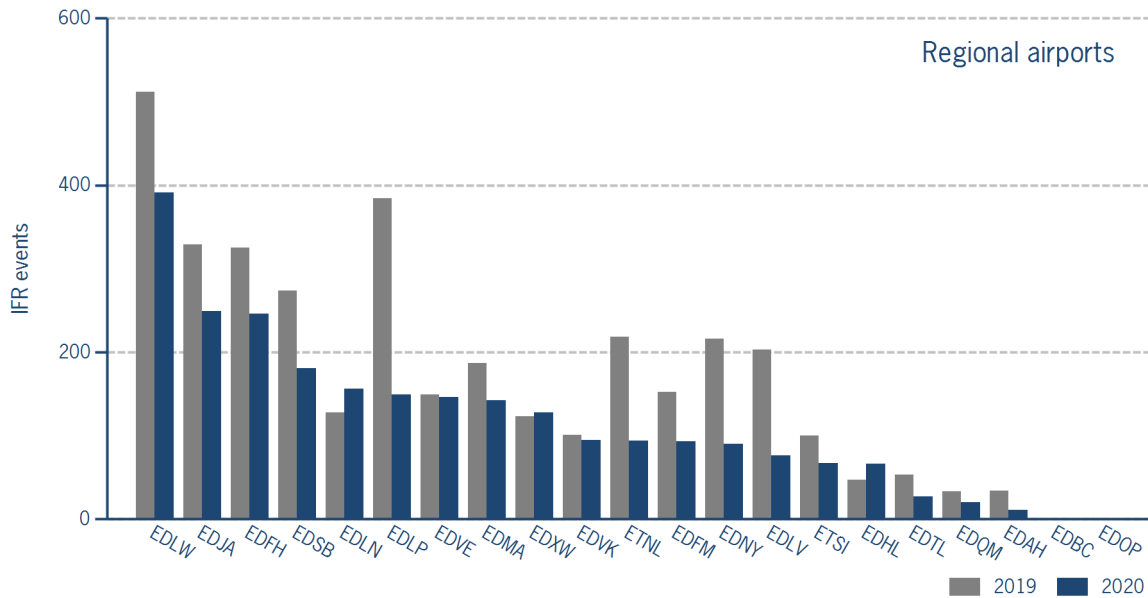
	Week 41	Trend	Week 1 - 41	Trend
EDAH Heringsdorf	11	-67,6%	511	-37,7%
EDBC Magdeburg/Cochstedt	0	N/A	0	-100,0%
EDFH Frankfurt-Hahn	246	-24,3%	8.965	-31,4%
EDFM Mannheim City	93	-38,8%	3.726	-30,4%
EDHL Lübeck-Blankensee	66	40,4%	1.821	-14,4%
EDJA Memmingen	249	-24,3%	7.928	-34,0%
EDLN Mönchengladbach	156	21,9%	5.339	4,1%
EDLP Paderborn/Lippstadt	149	-61,2%	4.529	-58,6%
EDLV Niederrhein	76	-62,6%	3.062	-60,8%
EDLW Dortmund	391	-23,6%	13.203	-30,6%
EDMA Augsburg	142	-24,1%	5.393	-6,6%
EDNY Friedrichshafen	90	-58,3%	3.816	-56,6%
EDOP Schwerin-Parchim	0	N/A	0	-100,0%
EDQM Hof-Plauen	20	-39,4%	1.105	-9,6%
EDSB Karlsruhe/Baden-Baden	181	-33,9%	6.844	-32,7%
EDTL Lahr	27	-49,1%	920	-25,3%
EDVE Braunschweig-Wolfsburg	146	-2,0%	4.175	-42,1%
EDVK Kassel-Calden	95	-5,9%	3.091	-19,3%
EDXW Sylt	128	4,1%	4.425	-13,7%
ETNL Laage	94	-56,9%	4.016	-38,5%
ETSI Ingolstadt/Manching	67	-33,0%	2.289	-45,0%

*The value is of limited conclusiveness (OLC).

Please note: The airport Magdeburg-Cochstedt (EDBC) is currently closed and the airport Sylt (EDXW) is now assigned to Austro Control.

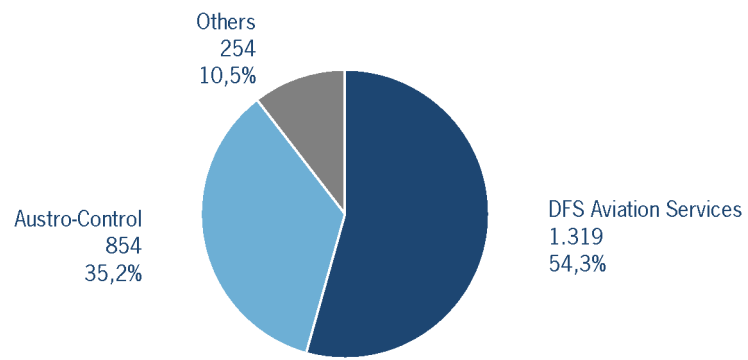
IFR flights at regional German airports - in detail

IFR events (take-offs and landings) at the different regional towers in the Federal Republic of Germany with control zone and barely any PPR.



IFR flights at regional German airports - air traffic service providers

Percentage of IFR events (take-offs and landings) at the regional towers in the Federal Republic of Germany differentiated between DFS Aviation Services, Austro Control and other providers.



- DFS Aviation Services: Dortmund (EDLW), Friedrichshafen (EDNY), Karlsruhe/Baden-Baden (EDSB), Lahr (EDTL), Magdeburg/Cochstedt (EDBC), Memmingen (EDJA), Mönchengladbach (EDLN), Niederrhein (EDLV), Paderborn/Lippstadt (EDLP)
- Austro Control: Augsburg (EDMA), Braunschweig-Wolfsburg (EDVE), Frankfurt-Hahn (EDFH), Heringsdorf (EDAH), Hof-Plauen (EDQM), Kassel-Calden (EDVK), Lübeck-Blankensee (EDHL), Schwerin-Parchim (EDOP), Sylt (EDXW)
- Others: Ingolstadt/Manching (ETSI), Laage (ETNL), Mannheim City (EDFM)

ATFM Arrival Delay

(Data Source: NM statistics, DFS LIZ)

ATFM Arrival Delay with reference to the relevant airport, in minutes per IFR arrival.

ATFM Arrival Delay:

sum of all arrival ATFM delay divided by the sum of all inbound flights for the particular traffic volume

No ATFM Delay

Please note: The ATFM delay data are provided by NM statistics. Due to internal distribution of the ATFM delay, data are modified by CC/FC and TWR/M. The inbound flight information is based on LIZ statistics.

All Airports means all international German airports: Berlin-Schönefeld (EDDB), Berlin-Tegel (EDDT), Bremen (EDDW), Dresden (EDDC), Düsseldorf (EDDL), Erfurt/Weimar (EDDE), Frankfurt/Main (EDDF), Hamburg (EDDH), Hannover (EDDV), Köln/Bonn (EDDK), Leipzig/Halle (EDDP), München (EDDM), Münster/Osnabrück (EDDG), Nürnberg (EDDN), Saarbrücken (EDDR), Stuttgart (EDDS)