



DFS Deutsche Flugsicherung

LIZ

Situation and Information Centre

Annual ATFM delay report

2012

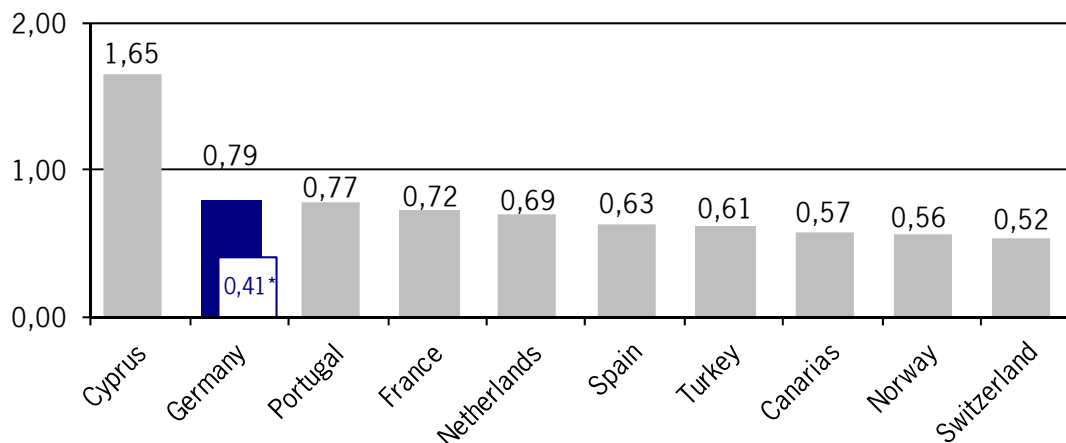
Air Traffic Flow Management (ATFM) delay ATFM measures in Europe (Data Source: NM statistics)

	2012		2011		Trend 11/12
Total flights	9.672.217		9.908.342		-2,4%
Regulated flights	904.635	9,4%	1.383.296	14,0%	-34,6%
Delayed flights	539.235	5,6%	848.833	8,6%	-36,5%

Total flights Number of flight plans having been activated in the EUROCONTROL NM TACT system.
Regulated flights Number of flights / percentage of flights with SLOT allocation (with & without delay).
Delayed flight Number of flights / percentage of flights subject to delays due to ATFM measures.
Trend column The percentages show the changes compared to the corresponding period last year.

ATFM-Delay per flight (Data Source: NM statistics)

Average ATFM delay per flight in minutes attributable to national FMPs



* caused by ATC
(source: DFS CC/FC, based on FMP reports)

ATFM Delay as a result of ATFM measures

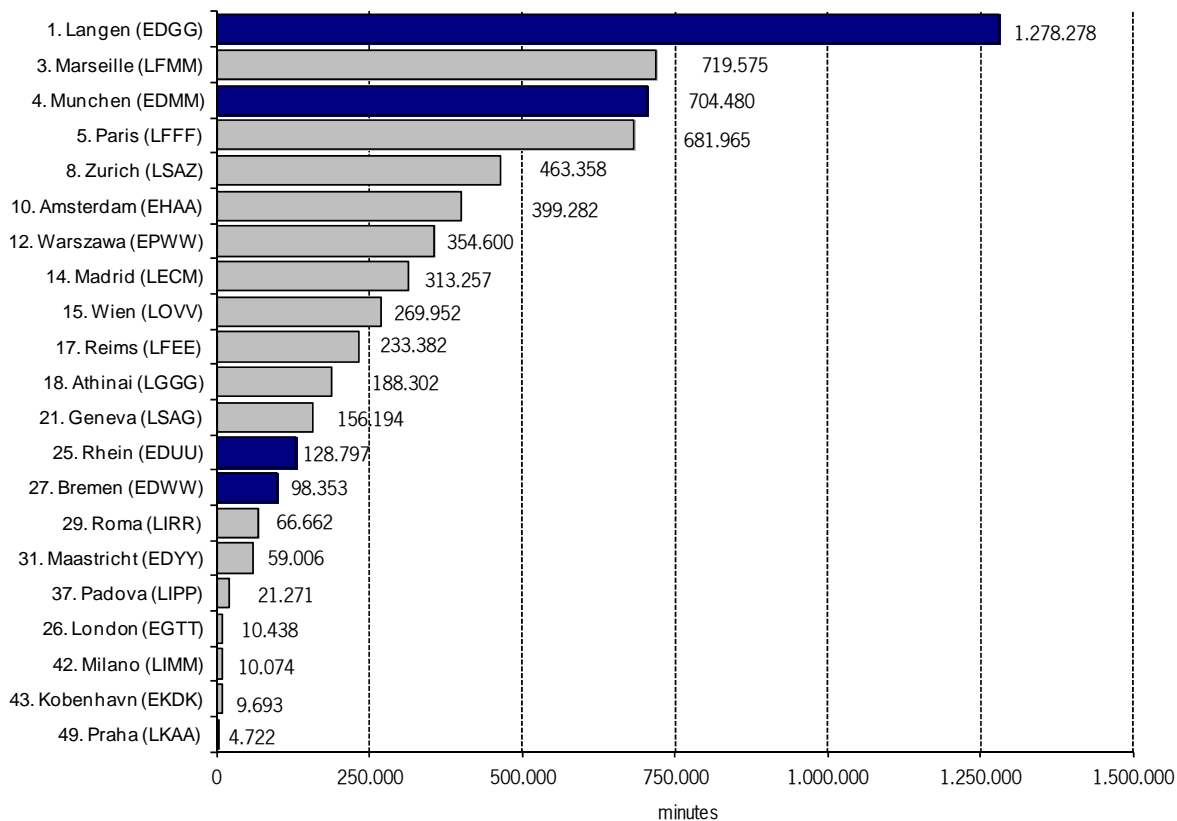
(Data Source: NM statistics)

ATFM delay in minutes as a result of ATFM measures of selected European FMPs

ATFM delay:

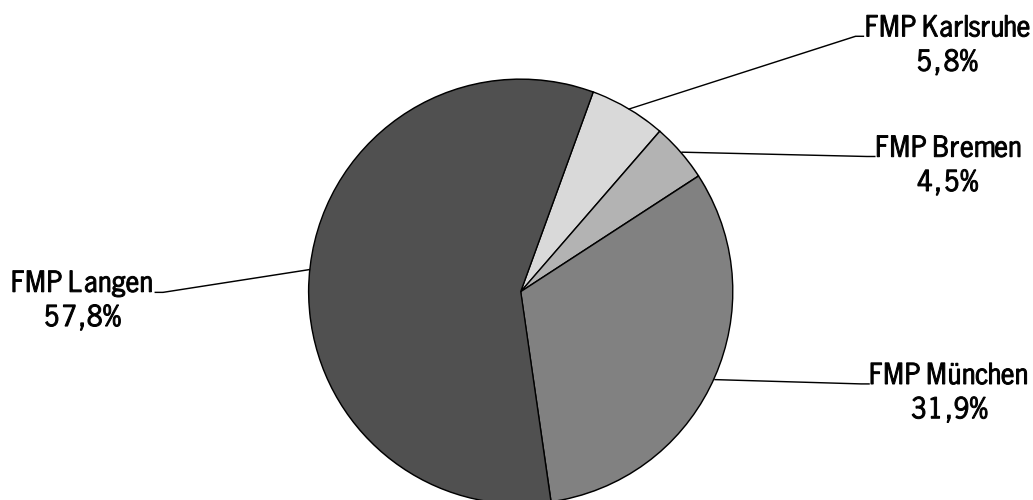
difference in time between estimated take-off time (ETOT) and calculated take-off time (CTOT) of the NM.

Percentage of German FMPs: 2.209.908 = 20,5% minutes of total delay of minutes 10.771.598

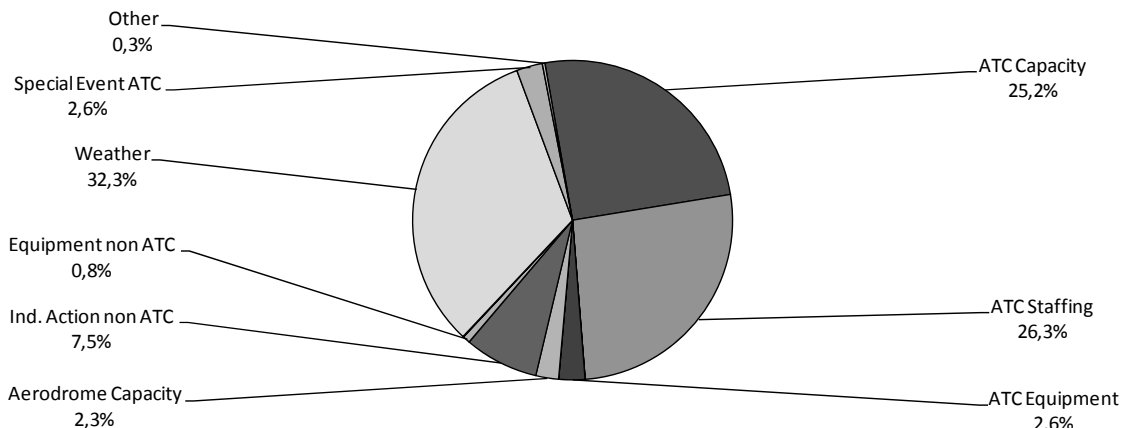


Percentage of German ATFM delay attributable to different FMPs

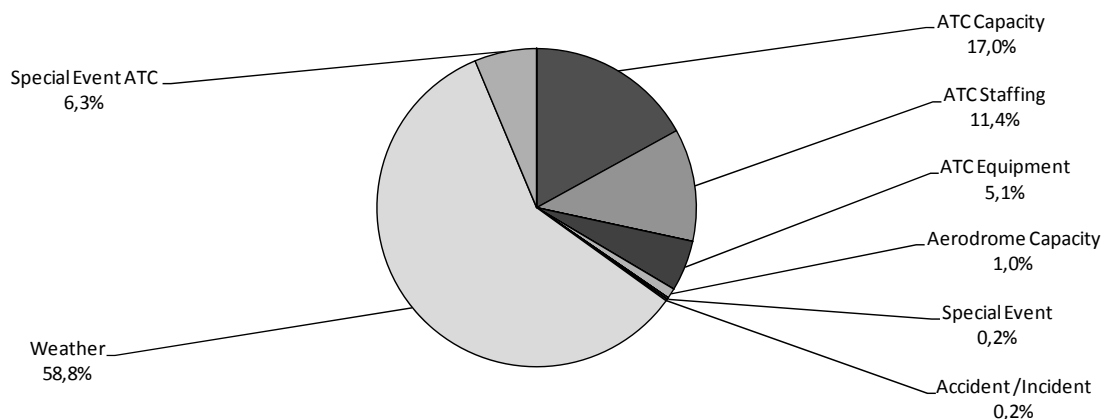
(Data Source: DFS CC-FC, based on FMP reports)



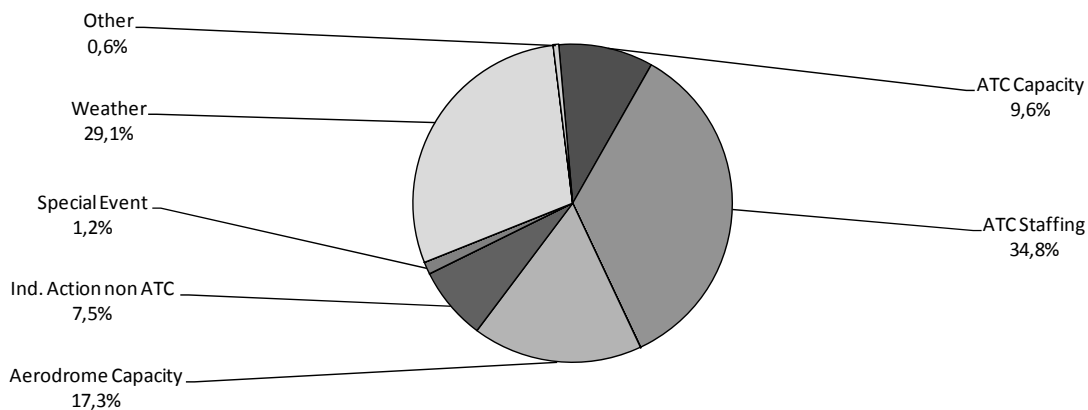
**FMP
Langen**



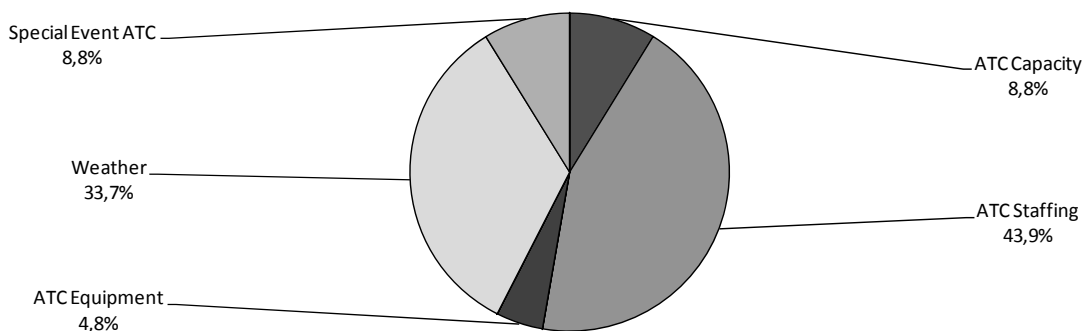
**FMP
München**



**FMP
Bremen**

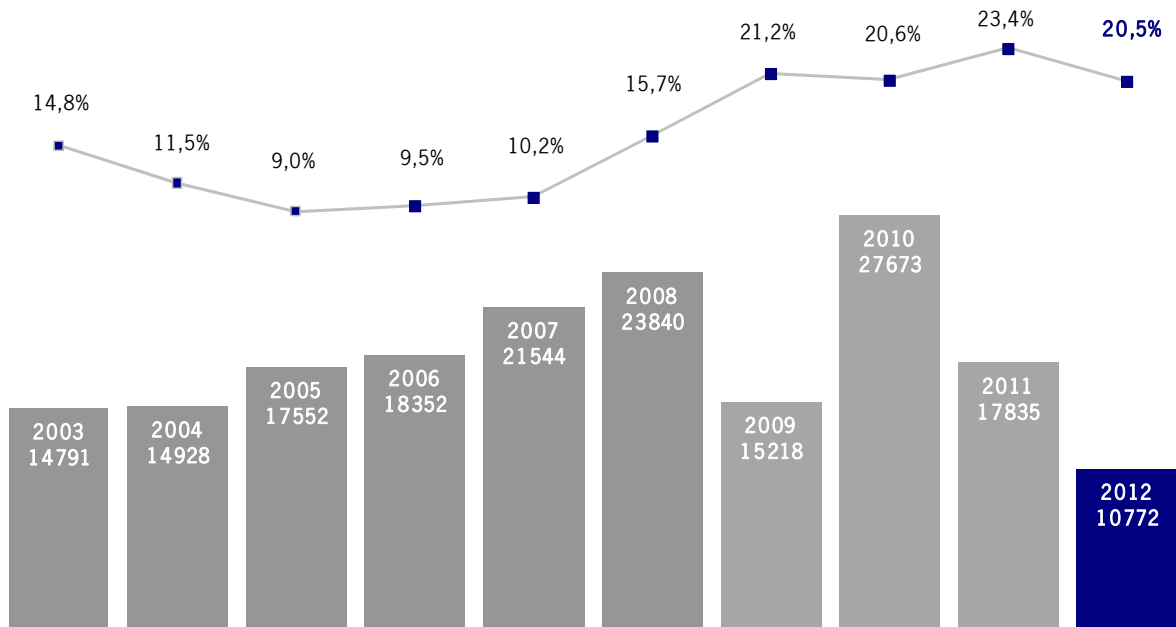


FMP
Karlsruhe



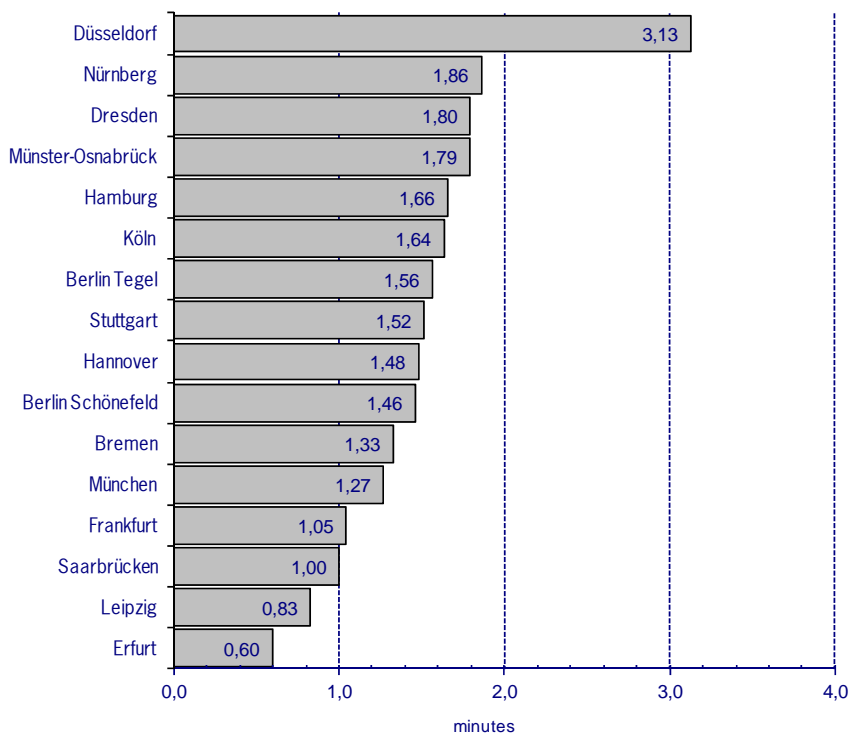
Development and share of ATFM delays attributable to German FMPs
(Data Source: NM statistics)

ATFM delay (in thousand minutes) and percentages of ATFM delays attributable to ATFM measures taken by German FMPs



ATFM departure delay at international German airports

(Data Source: CFMU statistics)



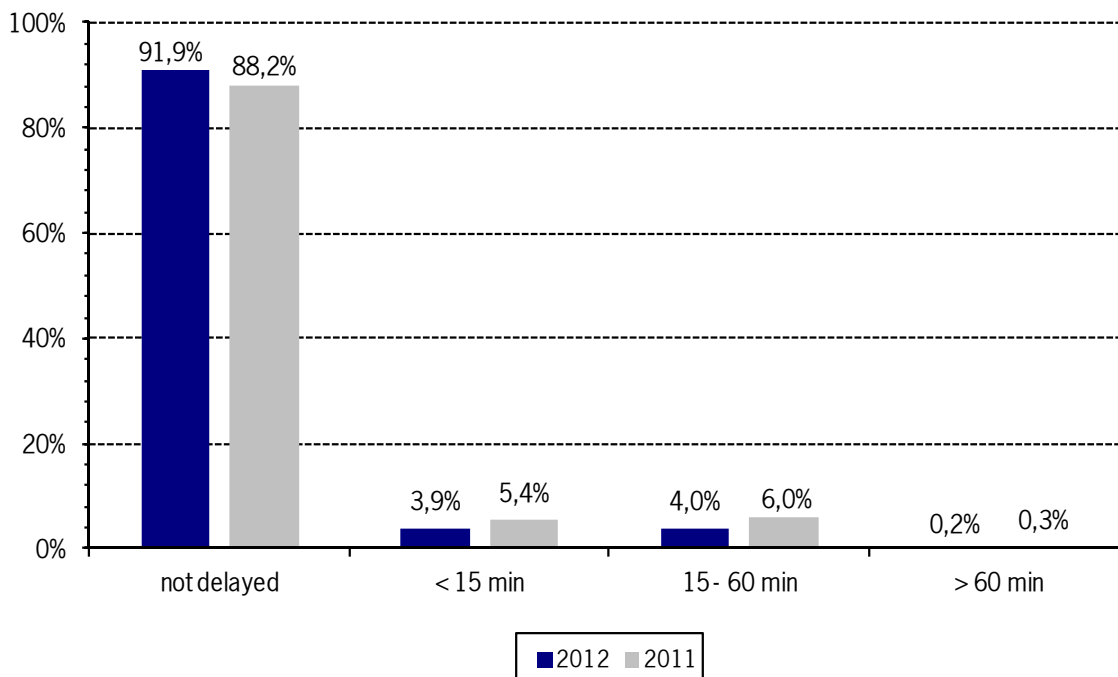
Average ATFM delays in minutes for departures from international German airports following ATFM measures of European FMPs.

German airports:
 14,2% = 1.529.235 minutes
 of total delay of
 10.771.598 minutes

ATFM departure delays at international German airports

(Data Source: NM statistics)

Percentage of ATFM delays for flights departing from international German airports attributable to ATFM measures of German FMPs in categories. The delays are distributed in 3 categories.

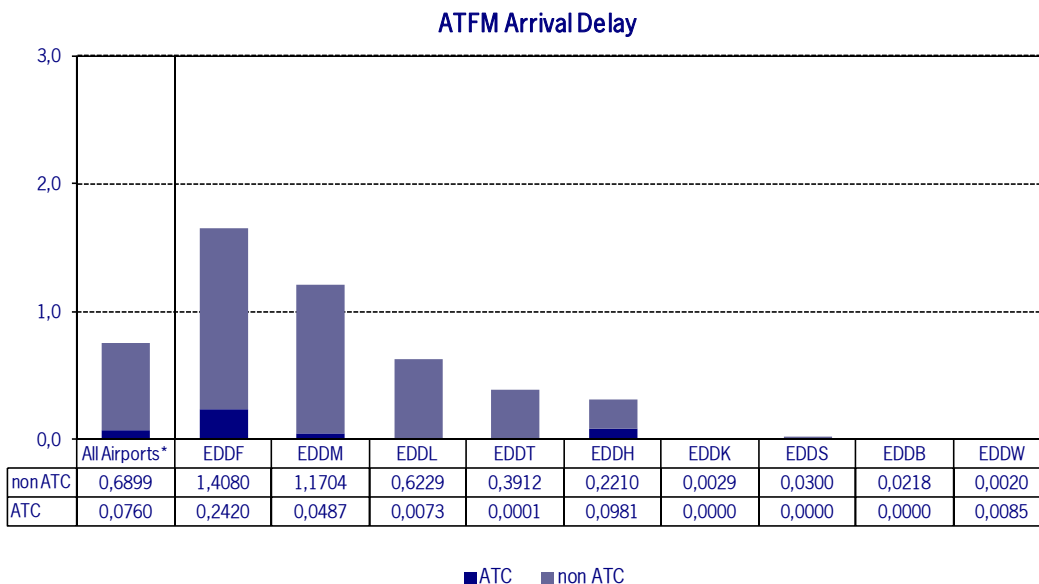


ATFM Arrival Delay
(Data Source: NM statistics, DFS LIZ)

ATFM arrival delay with reference to the relevant airport, in minutes per IFR arrival.

ATFM arrival delay:

Sum of all arrival ATFM delay divided by the sum of all inbound flights for the particular traffic volume



Please note: The ATFM delay data are provided by NM statistics. Due to internal distribution of the ATFM delay, data are modified by CC/FC and TWR/M. The inbound flight information is based on LIZ statistics.

* All Airports means all international German Airports
 Berlin Schönefeld (EDDB), Berlin Tegel (EDDT), Bremen (EDDW), Dresden (EDDC), Düsseldorf (EDDL), Erfurt (EDDE), Frankfurt (EDDF), Hamburg (EDDH), Hannover (EDDV), Köln/Bonn (EDDK), Leipzig (EDDP), München (EDDM), Münster-Osnabrück (EDDG), Nürnberg (EDDN), Saarbrücken (EDDR), Stuttgart (EDDS)