



DFS Deutsche Flugsicherung

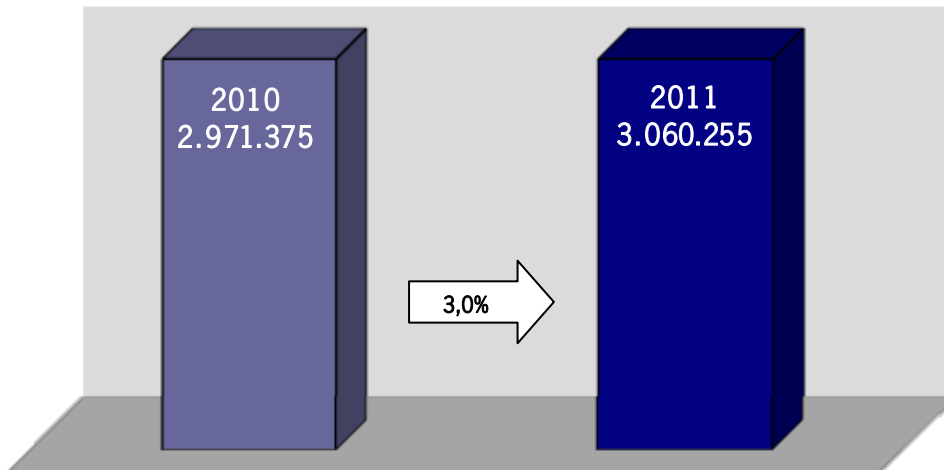
Air traffic statistics

Annual Summary 2011

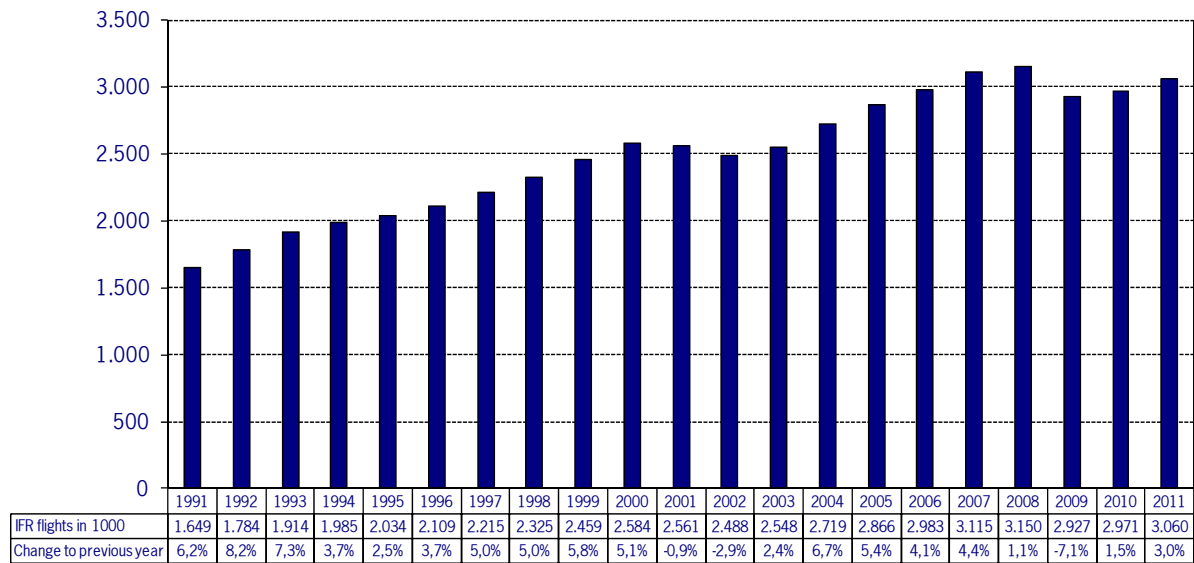
IFR flights in the Federal Republic of Germany

Peak Day 01.07.2011– 10.197 IFR Flights

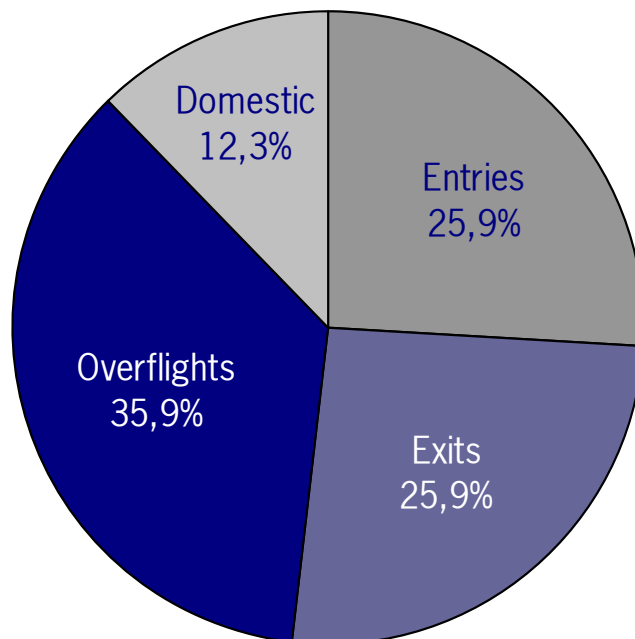
	2011	2010	Trend
Civil flights	3.006.005	2.909.070	3,3%
Military flights	54.250	62.305	-12,9%
Total	3.060.255	2.971.375	3,0%



Development of IFR traffic 1991 to 2011



Entries, Exits, overflights and domestic flights in 2011

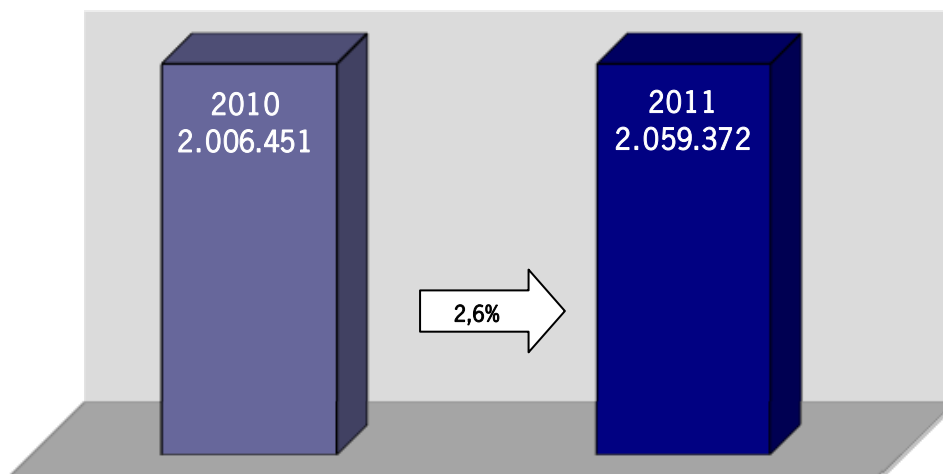


IFR take-offs and landings at international and regional German airports 2011

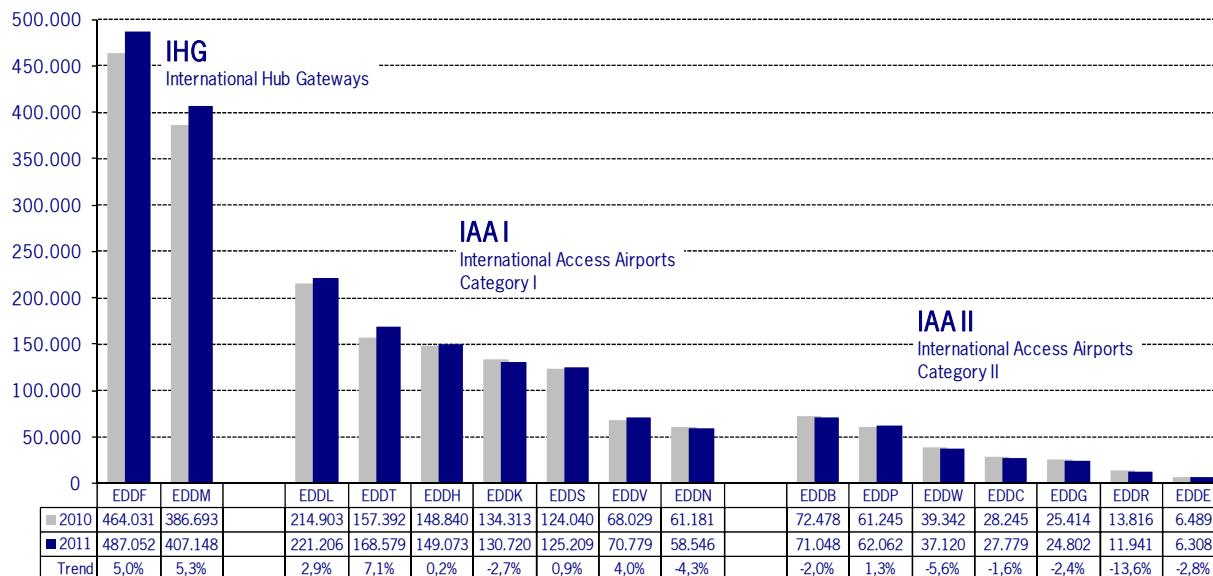
	2011	2010	Trend
International airports	2.059.372	2.006.451	2,6%
Regional airports	207.790	215.202	-3,4%
Total	2.267.162	2.221.653	2,0%

IFR take-offs and landings at international airports

Berlin-Schönefeld, Berlin-Tegel, Bremen, Dresden, Düsseldorf, Erfurt, Frankfurt, Hamburg, Hannover, Köln, Leipzig, München, Münster-Osnabrück, Nürnberg, Saarbrücken, Stuttgart



Traffic count of IFR take-offs and landings at international airports 2011



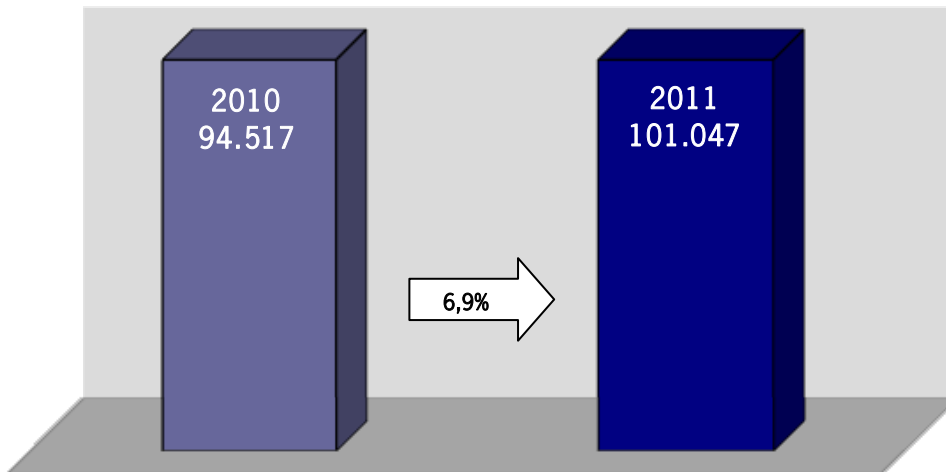
Peak – Day at international Airports 2011

	Date	Count
EDDB	08.07.	254
EDDC	01.06.	115
EDDE	15.06.	43
EDDF	30.06.	1.455
EDDG	14.06.	111
EDDH	30.09.	521
EDDK	10.10.	482
EDDL	23.09.	755
EDDM	16.09.	1.311
EDDN	14.11.	244
EDDP	24.05.	245
EDDR	23.11.	62
EDDS	10.06.	470
EDDT	29.06.	592
EDDV	22.09.	262
EDDW	19.05.	151

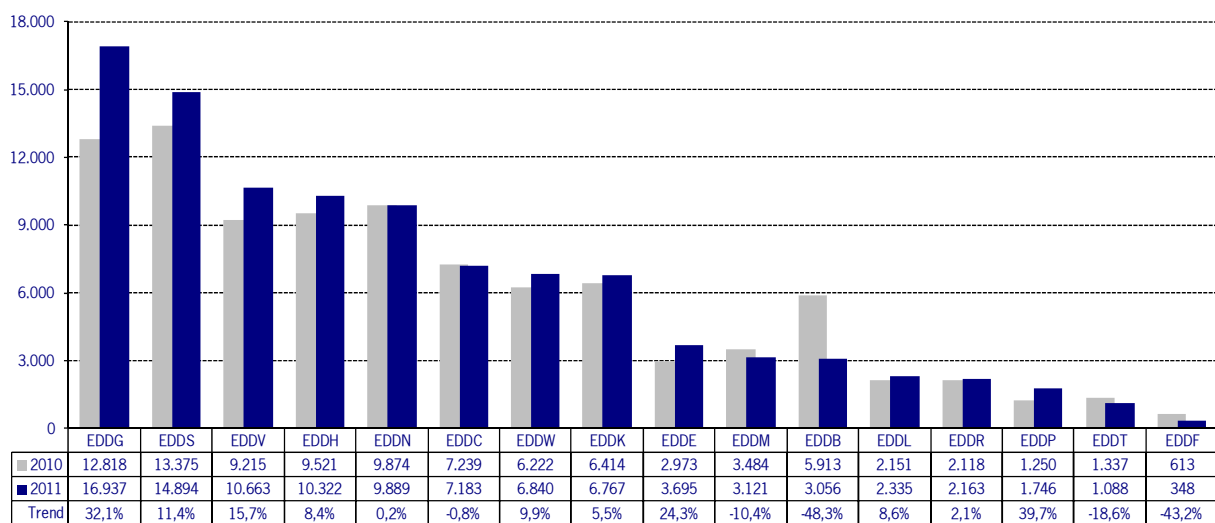
Please note: Only IFR arrivals and departures are taken into account.

VFR take-offs, landings and touch & goes at international airports

Berlin-Schönefeld, Berlin-Tegel, Bremen, Dresden, Düsseldorf, Erfurt, Frankfurt, Hamburg, Hannover, Köln-Bonn, Leipzig, München, Münster-Osnabrück, Nürnberg, Saarbrücken, Stuttgart

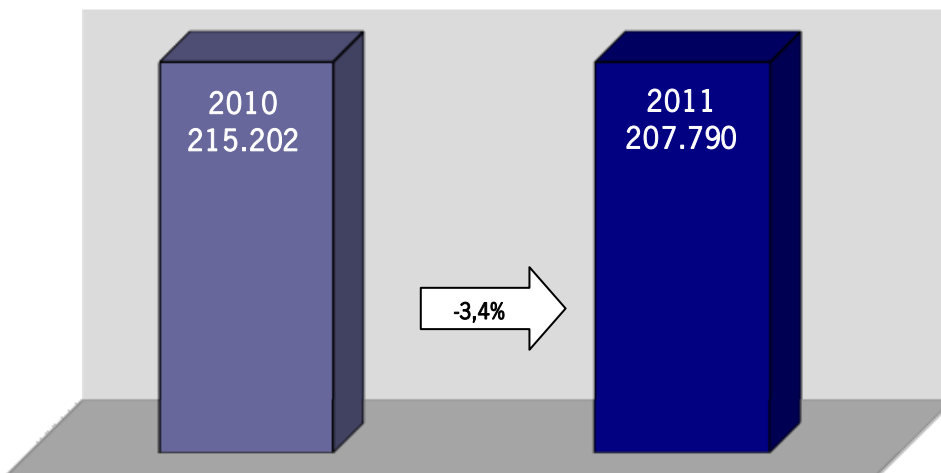


Traffic count of VFR take-offs, landings and touch & goes at international airports

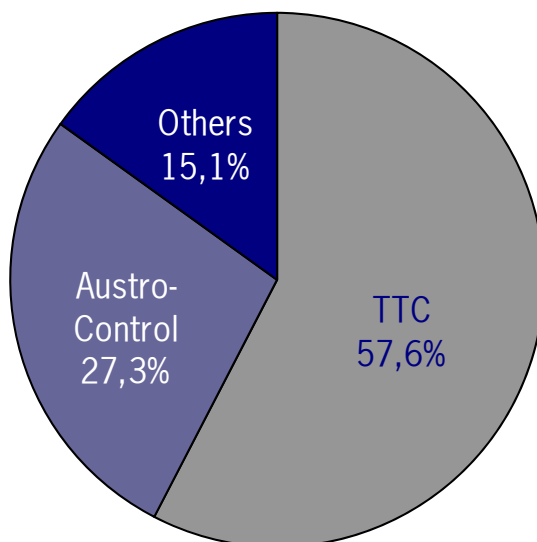


IFR take-offs and landings at regional airports

Altenburg-Nobitz, Augsburg, Braunschweig, Dortmund, Friedrichshafen, Hahn, Heringsdorf, Hof, Ingolstadt, Karlsruhe-Baden, Kassel, Laage, Lahr, Lübeck, Magdeburg/Cochstedt, Mannheim, Memmingen, Mönchengladbach, Niederrhein, Neubrandenburg, Paderborn, Schwerin, Westerland, Zweibrücken



Shares of the different air traffic providers



TTC: Altenburg-Nobitz (EDAC), Dortmund (EDLW), Hahn (EDFH), Karlsruhe-Baden (EDSB), Magdeburg/Cochstedt (EDBC), Memmingen (EDJA), Mönchengladbach (EDLN), Niederrhein (EDLV), Paderborn (EDLP), Schwerin (EDOP)

Austro-Control: Augsburg (EDMA), Braunschweig (EDVE), Friedrichshafen (EDNY), Heringsdorf (EDAH), Hof (EDQM), Kassel (EDVK), Lübeck (EDHL), Westerland (EDXW), Zweibrücken (EDRZ)

Others: Ingolstadt (ETSI), Laage (ETNL), Lahr (EDTL), Mannheim (EDFM), Neubrandenburg (ETNU)

Traffic count of IFR take-offs and landings at regional airports 2011

