



LIZ Bulletin

DFS Situation and Information Centre

Week 22

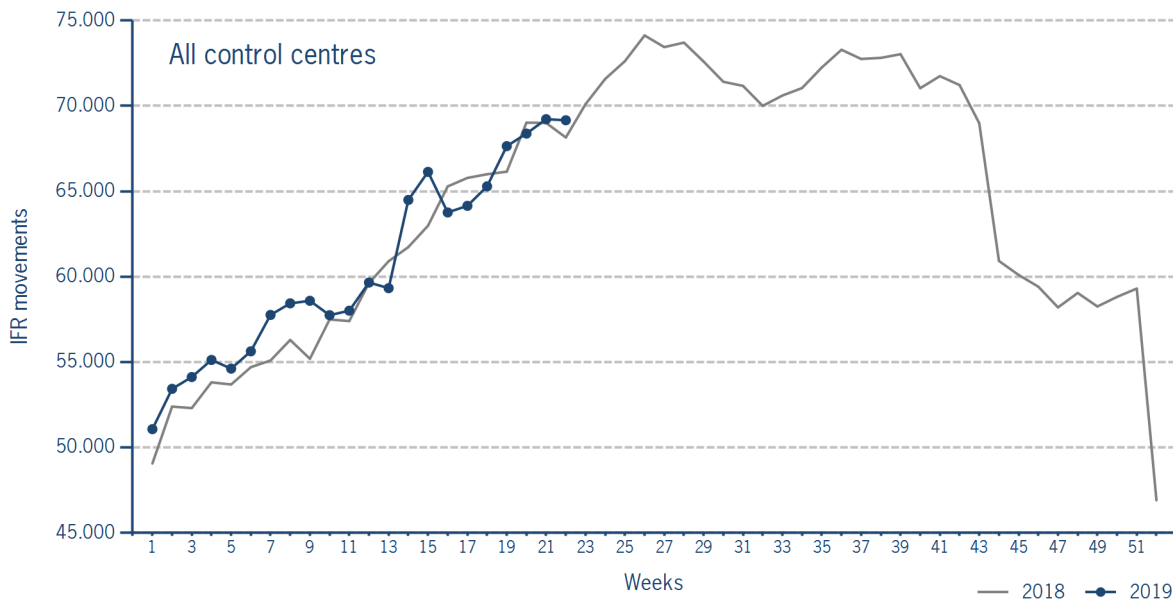
27 MAY 2019 - 2 JUN 2019

Version 06.06.2019

IFR flights in the Federal Republic of Germany

IFR movements (entries, exits, overflights and domestics) in all control sectors with a German designator.

	2019	2018	Trend
Week 22	69.161	68.150	1,5%
Cumulated Weeks	1.331.707	1.312.017	1,5%

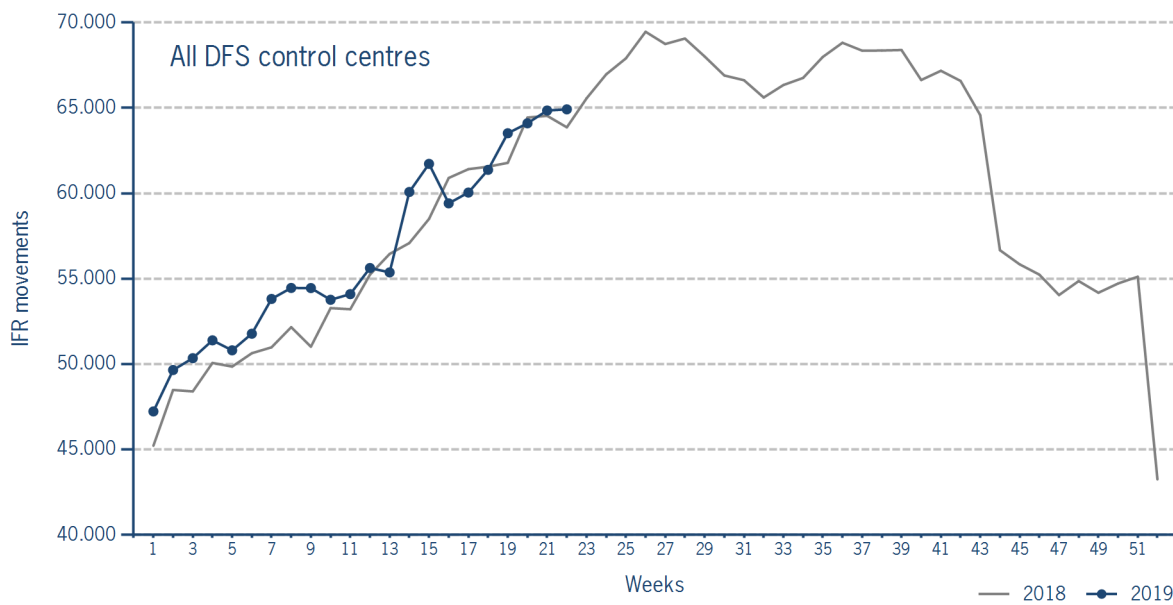


Please note: This count covers the traffic in the area build by all control sectors with a German designator („ED“), regardless of the service provider, including civil and military traffic in sectors controlled by DFS and Maastricht UAC (Maastricht-Hannover sectors). The area counted is composed of modular control sectors designed for ATC purposes with partly cross border structures and is therefore not identical to the political border of the Federal Republic of Germany or the national Flight Information Region (FIR).

IFR flights controlled by DFS

IFR movements (entries, exits, overflights and domestics) in control sectors controlled by DFS.

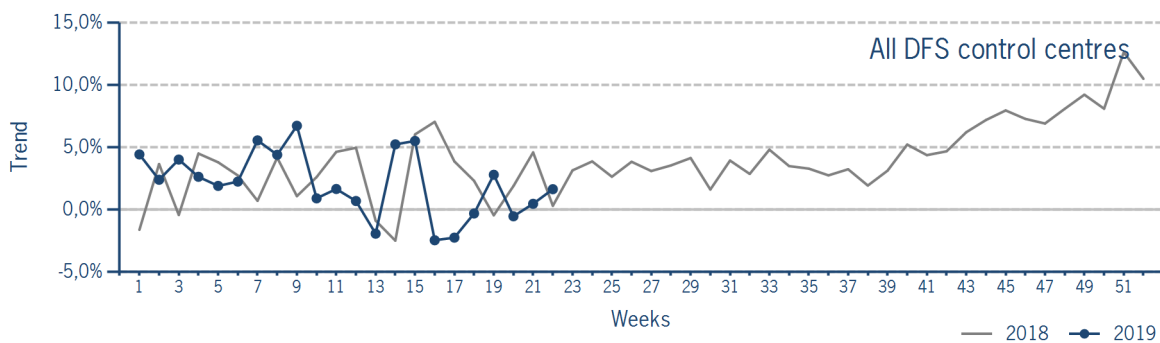
	2019	2018	Trend
Week 22	64.917	63.863	1,7%
Cumulated Weeks	1.242.726	1.218.997	1,9%



Please note: This count covers the traffic in the area build by control sectors of DFS control centres, including civil and military traffic. Traffic in Maastricht UAC (Maastricht-Hannover sectors) is not counted.

IFR flights controlled by DFS - trend

Trend in the number of IFR movements (entries, exits, overflights and domestics) in control sectors controlled by DFS.

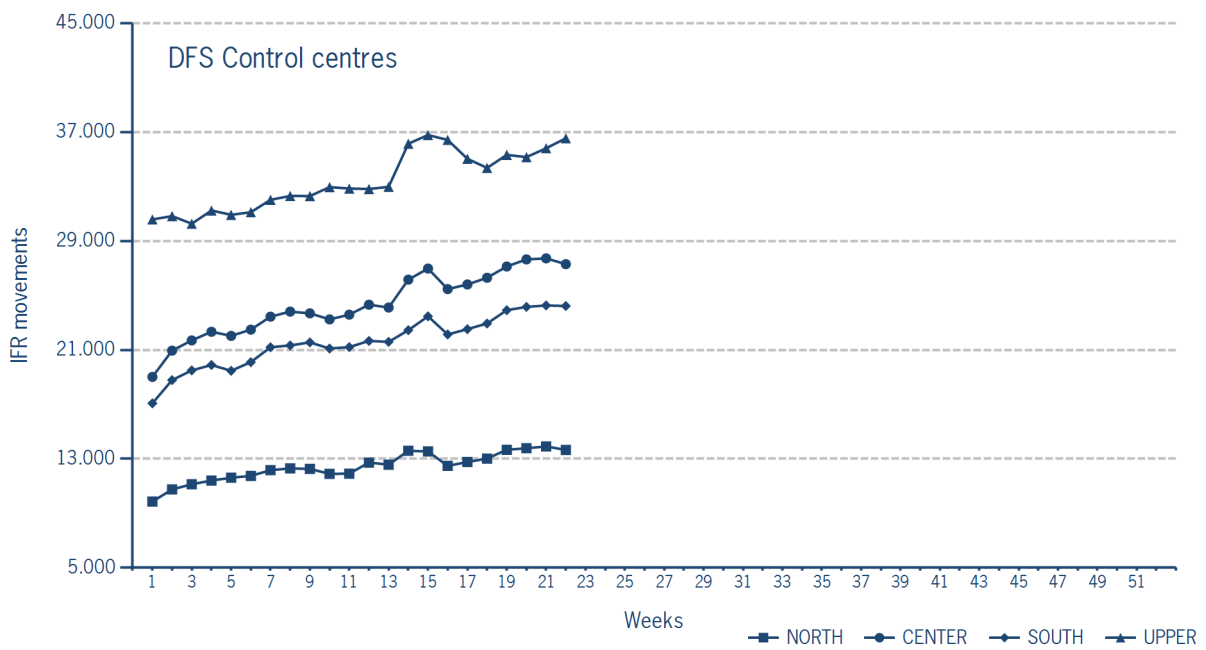


IFR flights controlled by DFS - in detail

IFR movements (entries, exits, overflights and domestics) controlled by DFS at the different control centres.

	NORTH	CENTER	SOUTH	UPPER
Week 22	13.652	27.297	24.226	36.544
Trend	2,3%	2,6%	1,3%	-1,8%
Cumulated Weeks	272.744	535.230	474.542	734.795
Trend	3,6%	1,9%	2,4%	-1,0%

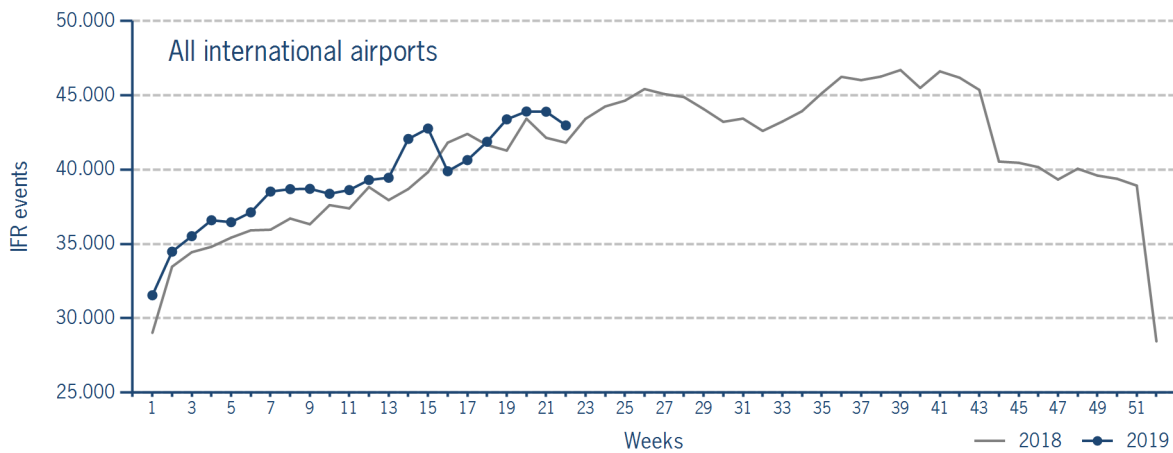
Please note: The trend numbers compare counts of the airspaces in their current configuration to the count of the same airspace in 2018.



IFR flights at international German airports

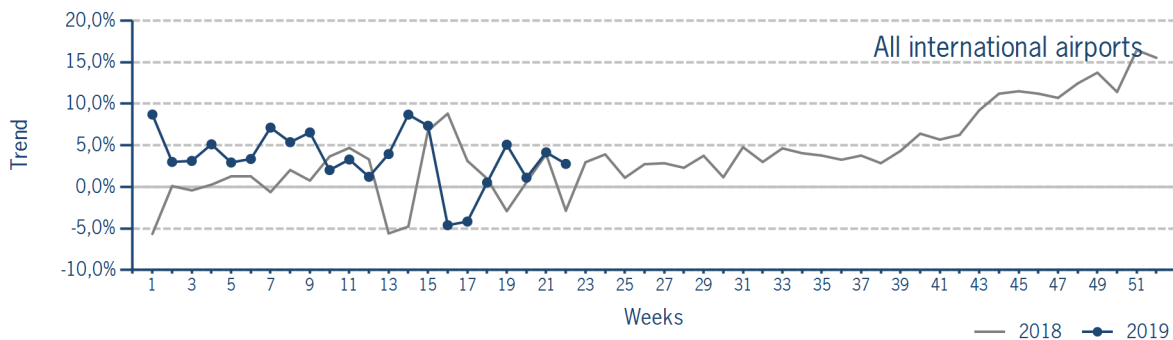
IFR events (take-offs and landings) at the international DFS towers in the Federal Republic of Germany.

	2019	2018	Trend
Week 22	42.977	41.817	2,8%
Cumulated Weeks	864.869	836.971	3,3%



IFR flights at international German airports - trend

Trend in the number of IFR events (take-offs and landings) at the international DFS towers in the Federal Republic of Germany.



IFR flights at international German airports - airport category

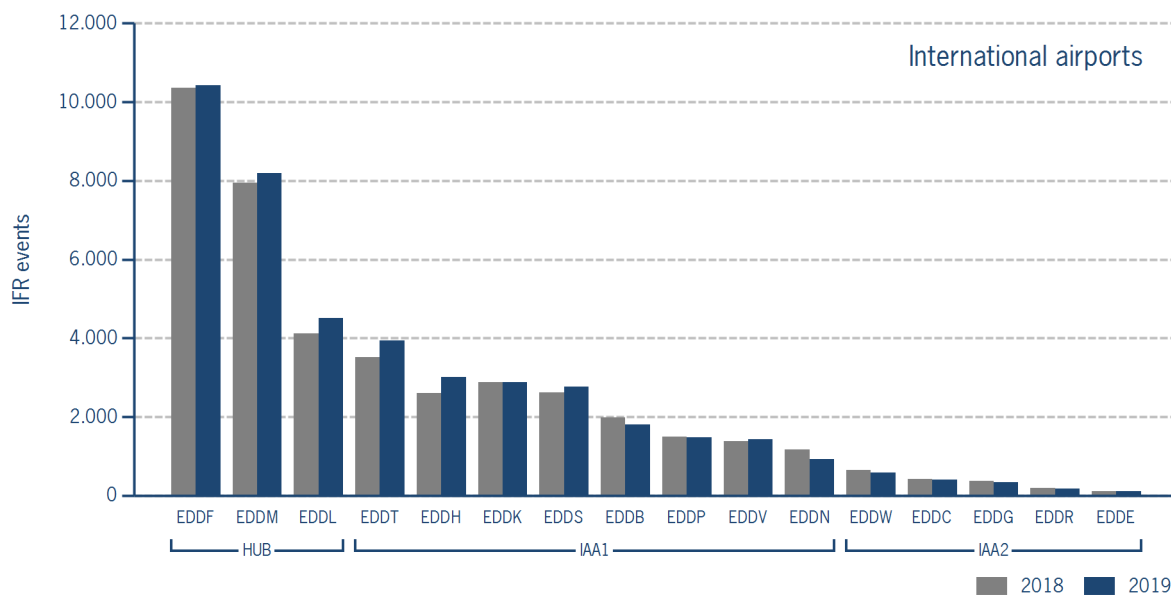
IFR events (take-offs and landings) at the international DFS towers in the Federal Republic of Germany differentiated by Hub Gateways (HUB), International Access Airports 1 (IAA1) and International Access Airports 2 (IAA2).

	HUB	IAA1	IAA2
Week 22	23.119	18.248	1.610
Trend	3,1%	3,4%	-7,3%
Cumulated Weeks	471.470	361.624	31.775
Trend	3,7%	3,6%	-4,2%

IFR flights at international German airports - in detail

IFR events (take-offs and landings) at the different international DFS towers in the Federal Republic of Germany.

		Week 22	Trend	Week 1 - 22	Trend
HUB					
EDDF	Frankfurt/Main	10.420	0,6%	210.138	1,9%
EDDL	Düsseldorf	4.503	9,2%	91.557	9,5%
EDDM	München	8.196	3,1%	169.775	3,0%
IAA1					
EDDB	Berlin-Schönefeld	1.810	-9,2%	38.137	-7,6%
EDDH	Hamburg	3.010	15,5%	60.951	3,5%
EDDK	Köln/Bonn	2.887	0,4%	54.727	-0,9%
EDDN	Nürnberg	924	-20,6%	18.996	-9,5%
EDDP	Leipzig/Halle	1.484	-1,2%	30.745	4,2%
EDDS	Stuttgart	2.761	5,5%	52.239	5,4%
EDDT	Berlin-Tegel	3.936	12,0%	81.036	17,6%
EDDV	Hannover	1.436	4,2%	24.793	0,4%
IAA2					
EDDC	Dresden	405	-2,6%	8.209	-3,6%
EDDE	Erfurt/Weimar	110	-6,0%	1.771	-6,9%
EDDG	Münster/Osnabrück	337	-8,2%	7.148	1,7%
EDDR	Saarbrücken	182	-4,7%	2.838	-19,5%
EDDW	Bremen	576	-10,7%	11.809	-3,2%



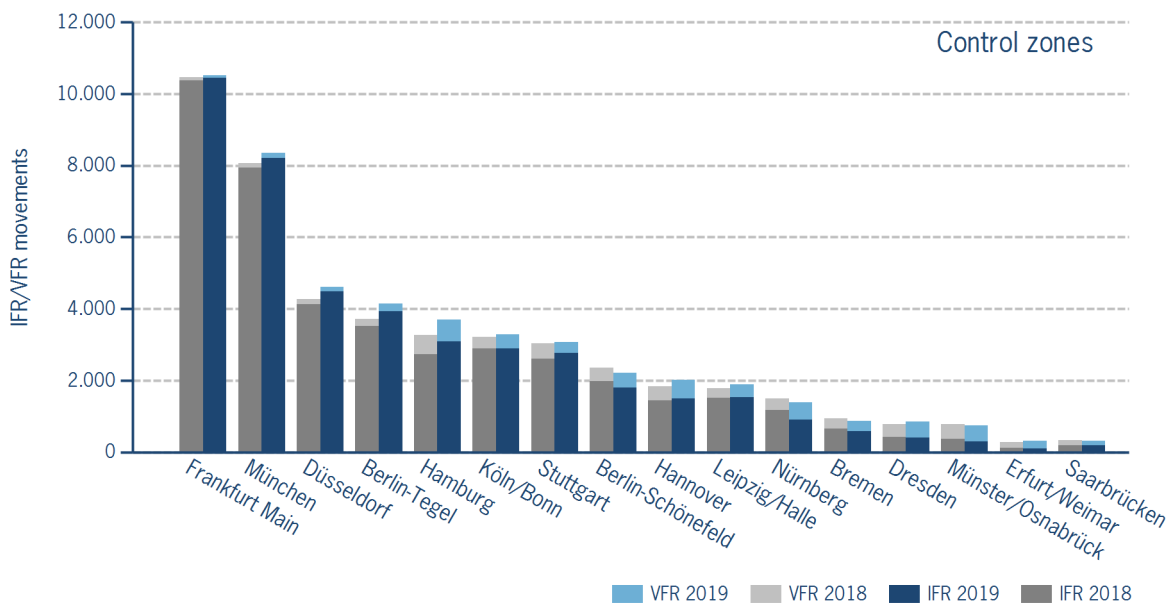
IFR/VFR flights in control zones of DFS towers

IFR/VFR movements (entries, exits, overflights and domestics) at the different control zones of international DFS towers.

	Week 22	Trend	Week 1 - 22	Trend
Berlin-Schönefeld	2.219	-5,9%	44.076	-7,6%
Berlin-Tegel	4.150	11,6%	84.345	15,8%
Bremen	866	-7,6%	16.791	-5,2%
Dresden	843	7,8%	13.506	-6,2%
Düsseldorf	4.620	8,1%	94.162	8,7%
Erfurt/Weimar	316	13,7%	4.480	-7,1%
Frankfurt Main	10.520	0,5%	212.268	2,0%
Hamburg	3.704	13,4%	70.931	1,4%
Hannover	2.010	9,0%	33.068	-1,9%
Köln/Bonn	3.295	2,4%	60.520	-2,3%
Leipzig/Halle	1.882	5,3%	36.264	1,8%
München	8.356	3,7%	172.185	3,0%
Münster/Osnabrück	750	-2,8%	14.184	-4,9%
Nürnberg	1.380	-8,1%	24.600	-7,6%
Saarbrücken	309	-8,8%	4.550	-19,8%
Stuttgart	3.078	1,2%	58.243	3,5%

Additional information:

Münster reported 86 glider movements for the current week, i.e. 1.418 glider movements for the cumulated year.



IFR flights at regional German airports - in detail

IFR events (take-offs and landings) at the different regional towers in the Federal Republic of Germany with control zone and barely any PPR.

	2019	2018	Trend
Week 22	3.371	3.520	-4,2%
Cumulated Weeks	66.148	66.659	-0,8%

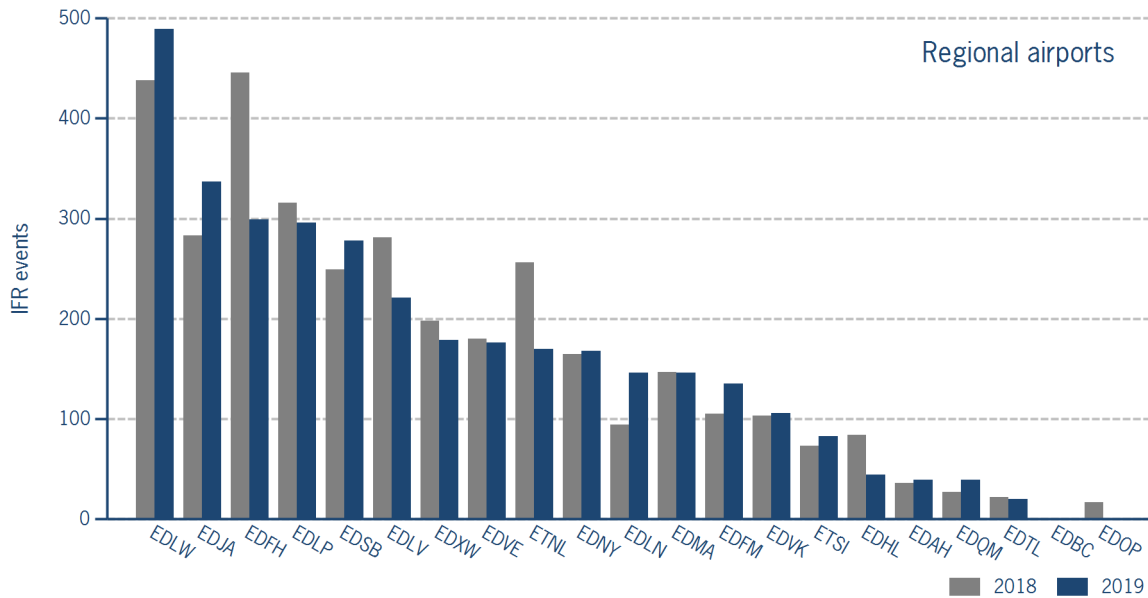
	Week 22	Trend	Week 1 - 22	Trend
EDAH Heringsdorf	39	8,3%	303	8,2%
EDBC Magdeburg/Cochstedt	0	N/A	1	0,0%
EDFH Frankfurt-Hahn	299	-33,0%	7.050	-16,2%
EDFM Mannheim City	135	28,6%	2.852	7,3%
EDHL Lübeck-Blankensee	44	-47,6%	1.191	34,7%
EDJA Memmingen	337	19,1%	6.290	17,4%
EDLN Mönchengladbach	146	55,3%	2.611	-4,1%
EDLP Paderborn/Lippstadt	296	-6,3%	5.229	3,9%
EDLV Niederrhein	221	-21,4%	3.726	-26,2%
EDLW Dortmund	489	11,6%	9.583	8,0%
EDMA Augsburg	146	-0,7%	2.844	-1,1%
EDNY Friedrichshafen	168	1,8%	4.664	9,2%
EDOP Schwerin-Parchim	0	-100,0%	24	-90,8%
EDQM Hof-Plauen	39	44,4%	615	17,1%
EDSB Karlsruhe/Baden-Baden	278	11,6%	4.743	0,0%
EDTL Lahr	20	-9,1%	647	3,9%
EDVE Braunschweig-Wolfsburg	176	-2,2%	4.009	-2,5%
EDVK Kassel-Calden	106	2,9%	1.774	-7,2%
EDXW Sylt	179	-9,6%	1.977	-7,7%
ETNL Laage	170	-33,6%	3.584	-1,3%
ETSI Ingolstadt/Manching	83	13,7%	2.431	6,4%

*The value is of limited conclusiveness (OLC).

Please note: The airport Magdeburg-Cochstedt (EDBC) is currently closed.

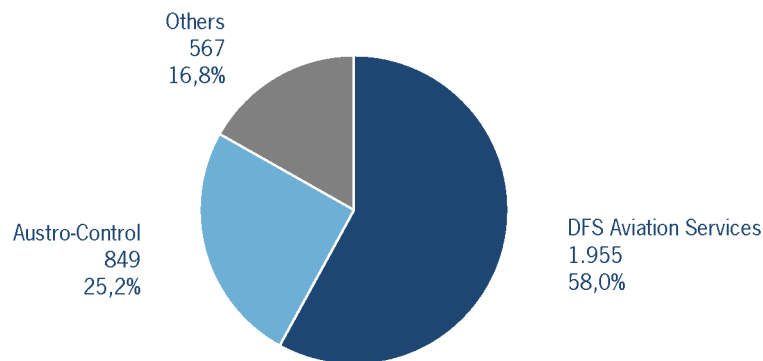
IFR flights at regional German airports - in detail

IFR events (take-offs and landings) at the different regional towers in the Federal Republic of Germany with control zone and barely any PPR.



IFR flights at regional German airports - air traffic service providers

Percentage of IFR events (take-offs and landings) at the regional towers in the Federal Republic of Germany differentiated between DFS Aviation Services, Austro Control and other providers.



DFS Aviation Services: Dortmund (EDLW), Friedrichshafen (EDNY), Karlsruhe/Baden-Baden (EDSB), Lahr (EDTL), Magdeburg/Cochstedt (EDBC), Memmingen (EDJA), Mönchengladbach (EDLN), Niederrhein (EDLV), Paderborn/Lippstadt (EDLP)

Austro Control: Augsburg (EDMA), Braunschweig-Wolfsburg (EDVE), Frankfurt-Hahn (EDFH), Heringsdorf (EDAH), Hof-Plauen (EDQM), Kassel-Calden (EDVK), Lübeck-Blankensee (EDHL), Schwerin-Parchim (EDOP)

Others: Ingolstadt/Manching (ETSI), Laage (ETNL), Mannheim City (EDFM), Sylt (EDXW)

ATFM Arrival Delay

(Data Source: NM statistics, DFS LIZ)

ATFM Arrival Delay with reference to the relevant airport, in minutes per IFR arrival.

ATFM Arrival Delay:

sum of all arrival ATFM delay divided by the sum of all inbound flights for the particular traffic volume

Airports		ATC Delay [min/arrival]	non ATC Delay [min/arrival]	
	All Airports	0,0247	0,3144	
EDDW	Bremen	1,6918	0	
EDDF	Frankfurt/Main	0	1,0981	
EDDL	Düsseldorf	0	0,4141	
EDDH	Hamburg	0	0,0750	
EDDK	Köln/Bonn	0,0263	0	

Please note: The ATFM delay data are provided by NM statistics. Due to internal distribution of the ATFM delay, data are modified by CC/FC and TWR/M. The inbound flight information is based on LIZ statistics.

All Airports means all international German airports: Berlin-Schönefeld (EDDB), Berlin-Tegel (EDDT), Bremen (EDDW), Dresden (EDDC), Düsseldorf (EDDL), Erfurt/Weimar (EDDE), Frankfurt/Main (EDDF), Hamburg (EDDH), Hannover (EDDV), Köln/Bonn (EDDK), Leipzig/Halle (EDDP), München (EDDM), Münster/Osnabrück (EDDG), Nürnberg (EDDN), Saarbrücken (EDDR), Stuttgart (EDDS)