



# LIZ Bulletin

DFS Situation and Information Centre

## Week 52

21 DEC 2020 - 27 DEC 2020

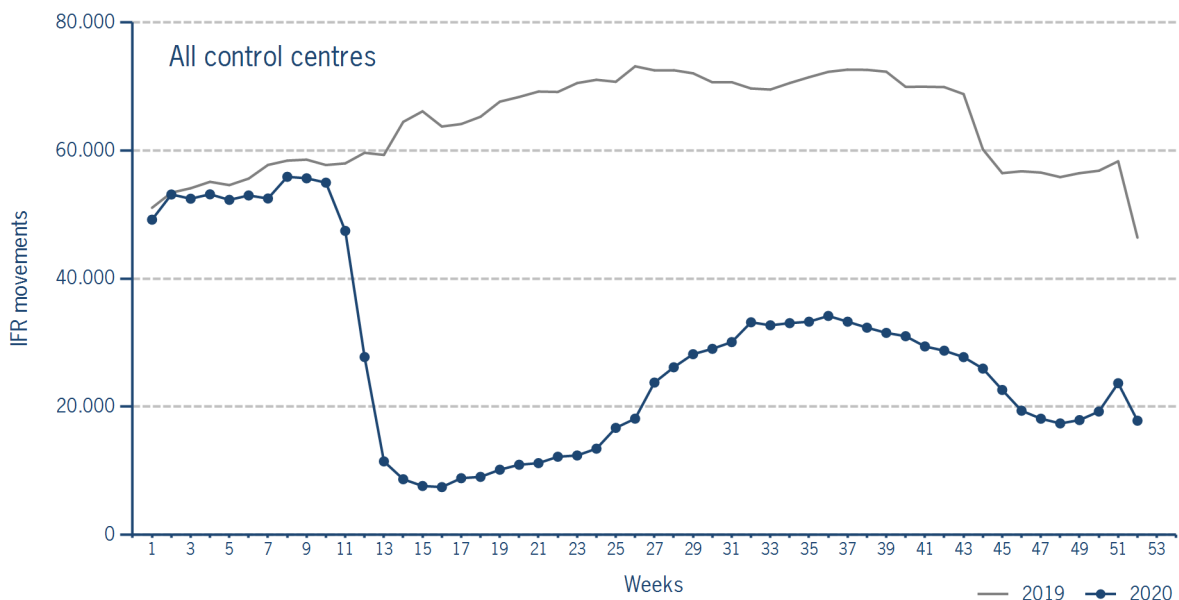
Version 29.12.2020

Please note: Figures in this last LIZBu of 2020 cannot be used as annual statistics because they are based on weekly data. For statistic information on the year please refer to our Annual Summary 2020.

### IFR flights in the Federal Republic of Germany

IFR movements (entries, exits, overflights and domestics) in all control sectors with a German designator.

	2020	2019	Trend
<b>Week 52</b>	17.811	46.404	-61,6%
<b>Cumulated Weeks</b>	1.465.405	3.329.479	-56,0%

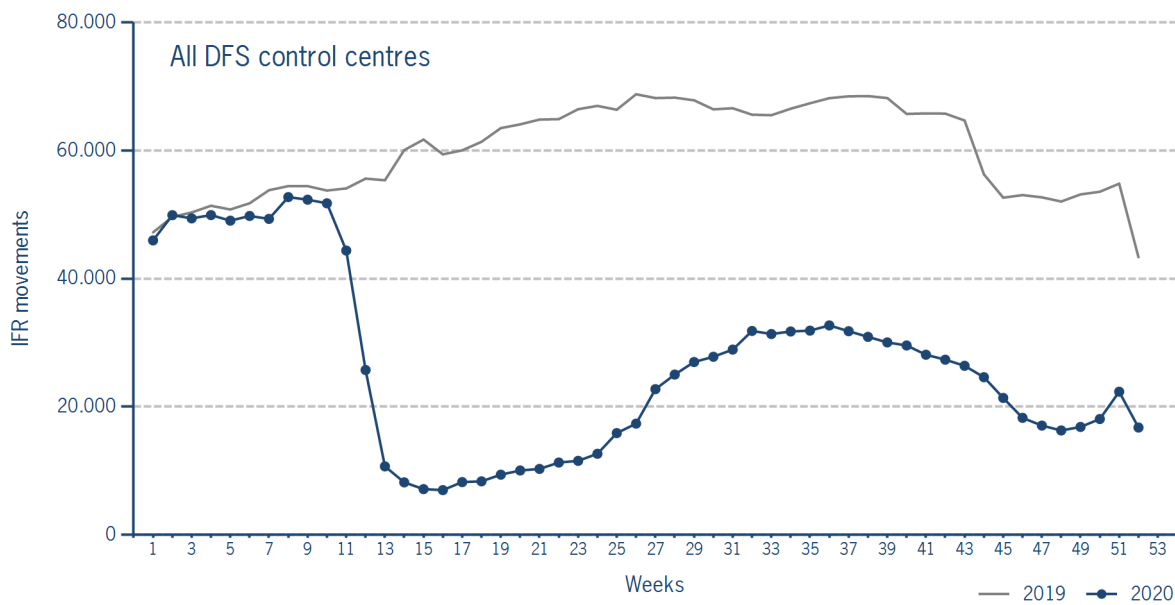


Please note: This count covers the traffic in the area build by all control sectors with a German designator („ED“), regardless of the service provider, including civil and military traffic in sectors controlled by DFS and Maastricht UAC (Maastricht-Hannover sectors). The area counted is composed of modular control sectors designed for ATC purposes with partly cross border structures and is therefore not identical to the political border of the Federal Republic of Germany or the national Flight Information Region (FIR).

### IFR flights controlled by DFS

IFR movements (entries, exits, overflights and domestics) in control sectors controlled by DFS.

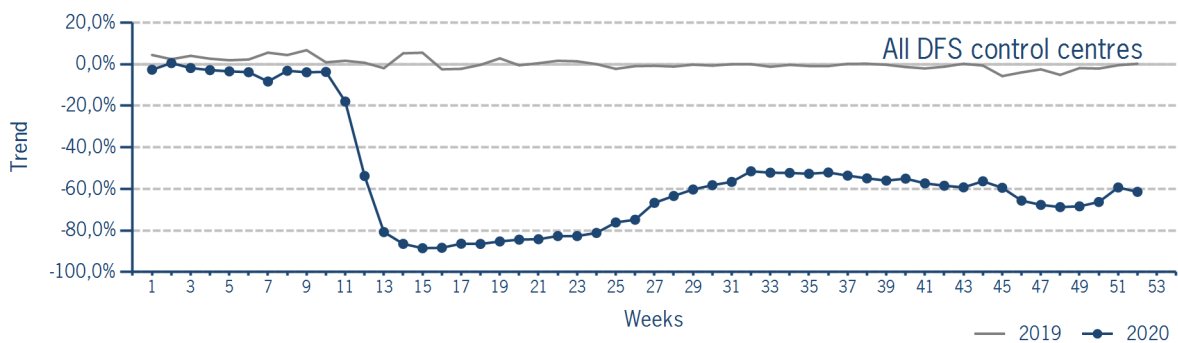
	2020	2019	Trend
<b>Week 52</b>	16.739	43.342	-61,4%
<b>Cumulated Weeks</b>	1.384.791	3.120.903	-55,6%



Please note: This count covers the traffic in the area build by control sectors of DFS control centres, including civil and military traffic. Traffic in Maastricht UAC (Maastricht-Hannover sectors) is not counted.

### IFR flights controlled by DFS - trend

Trend in the number of IFR movements (entries, exits, overflights and domestics) in control sectors controlled by DFS.

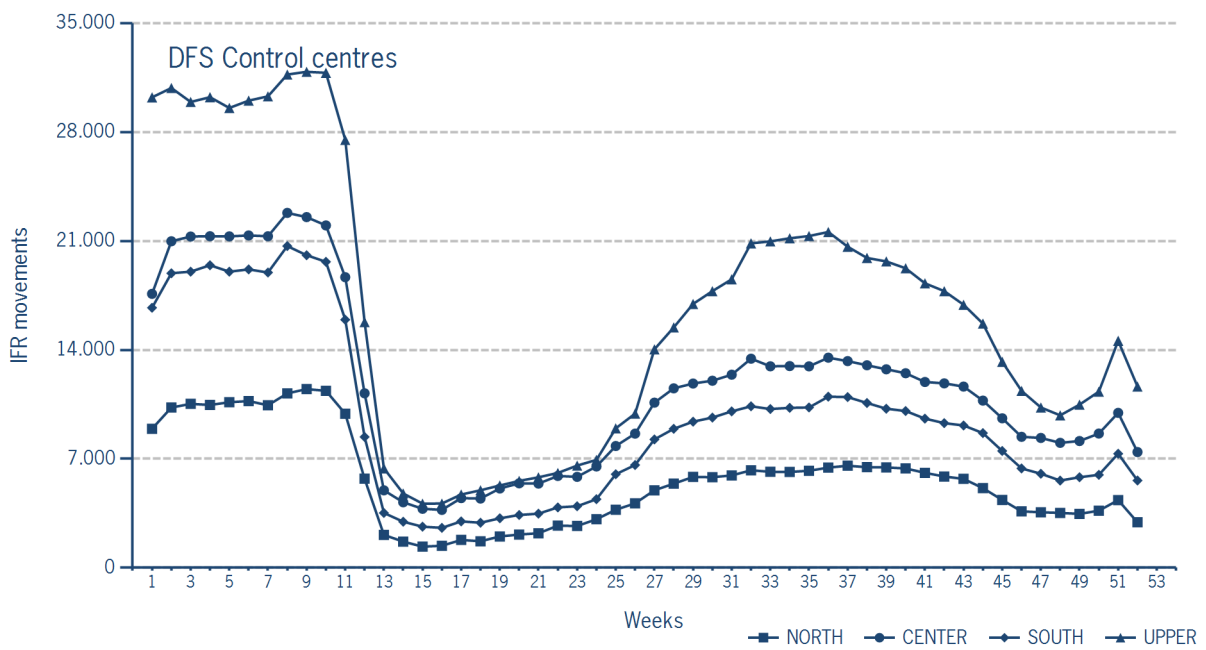


### IFR flights controlled by DFS - in detail

IFR movements (entries, exits, overflights and domestics) controlled by DFS at the different control centres.

	NORTH	CENTER	SOUTH	UPPER
<b>Week 52</b>	2.921	7.436	5.609	11.649
<b>Trend</b>	-65,7%	-55,5%	-65,1%	-58,9%
<b>Cumulated Weeks</b>	291.810	609.075	495.710	863.545
<b>Trend</b>	-56,2%	-54,2%	-58,1%	-52,5%

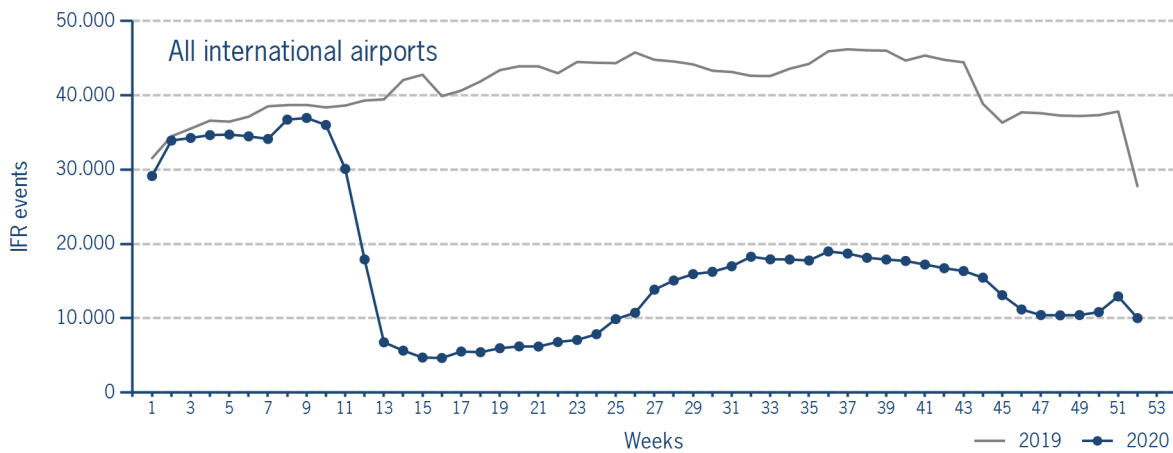
Please note: The trend numbers compare counts of the airspaces in their current configuration to the count of the same airspace in 2019.



### IFR flights at international German airports

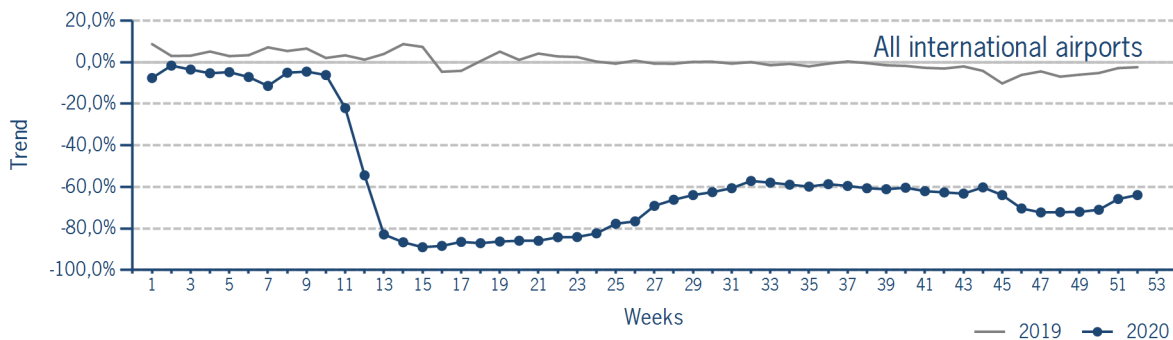
IFR events (take-offs and landings) at the international DFS towers in the Federal Republic of Germany.

	2020	2019	Trend
<b>Week 52</b>	10.026	27.765	-63,9%
<b>Cumulated Weeks</b>	883.306	2.128.237	-58,5%



### IFR flights at international German airports - trend

Trend in the number of IFR events (take-offs and landings) at the international DFS towers in the Federal Republic of Germany.



### IFR flights at international German airports - airport category

IFR events (take-offs and landings) at the international DFS towers in the Federal Republic of Germany differentiated by Hub Gateways (HUB), International Access Airports 1 (IAA1) and International Access Airports 2 (IAA2).

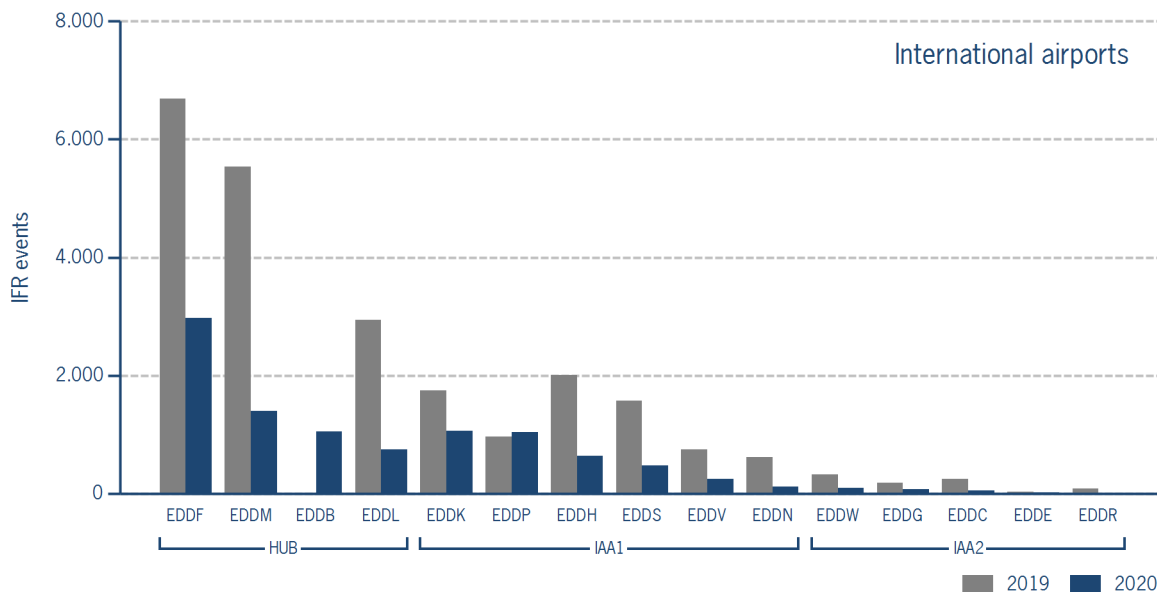
	HUB	IAA1	IAA2
<b>Week 52</b>	6.176	3.591	259
<b>Trend*</b>	-59,3%	-69,4%	-70,5%
<b>Cumulated Weeks*</b>	444.563	396.500	42.243
<b>Trend*</b>	-61,4%	-55,7%	-48,6%

\*Please note: Berlin-Schönefeld used to be listed as IAA1. Berlin-Brandenburg is listed as a HUB.

**IFR flights at international German airports - in detail**

IFR events (take-offs and landings) at the different international DFS towers in the Federal Republic of Germany.

		Week 52	Trend	Week 1 - 52	Trend
<b>HUB</b>					
EDDB	Berlin-Brandenburg	1.057	N/A	7.796	N/A
EDDF	Frankfurt/Main	2.976	-55,5%	212.568	-58,5%
EDDL	Düsseldorf	744	-74,7%	79.134	-64,8%
EDDM	München	1.399	-74,7%	145.065	-64,9%
<b>IAA1</b>					
EDDB	Berlin-Schönefeld	0	N/A	35.367	N/A
EDDH	Hamburg	637	-68,3%	60.378	-59,5%
EDDK	Köln/Bonn	1.066	-38,9%	79.660	-43,8%
EDDN	Nürnberg	119	-80,6%	20.324	-58,8%
EDDP	Leipzig/Halle	1.044	7,9%	61.822	-17,8%
EDDS	Stuttgart	472	-70,0%	50.216	-62,1%
EDDT	Berlin-Tegel	0	N/A	61.283	N/A
EDDV	Hannover	253	-66,3%	27.450	-57,5%
<b>IAA2</b>					
EDDC	Dresden	53	-79,0%	8.807	-57,4%
EDDE	Erfurt/Weimar	21	-36,4%	3.605	-23,3%
EDDG	Münster/Osnabrück	72	-60,7%	10.524	-44,4%
EDDR	Saarbrücken	14	-82,5%	4.083	-48,8%
EDDW	Bremen	99	-69,9%	15.224	-49,1%



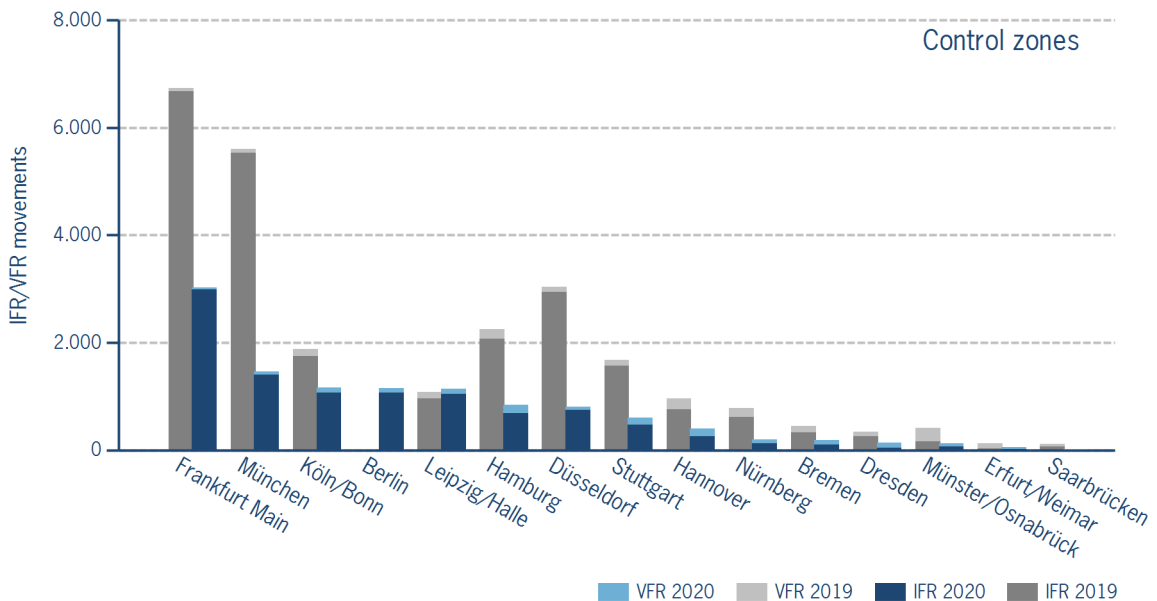
IFR/VFR flights in control zones of DFS towers

IFR/VFR movements (entries, exits, overflights and domestics) at the different control zones of international DFS towers.

	Week 52	Trend	Week 1 - 52	Trend
Berlin	1.154	N/A	8.764	N/A
Berlin-Schönefeld	0	N/A	48.820	N/A
Berlin-Tegel	0	N/A	69.430	N/A
Bremen	181	-59,6%	26.338	-37,9%
Dresden	134	-60,6%	21.698	-37,4%
Düsseldorf	804	-73,5%	87.001	-62,5%
Erfurt/Weimar	58	-52,1%	9.731	-20,9%
Frankfurt Main	3.030	-55,0%	218.605	-57,8%
Hamburg	847	-62,4%	85.349	-51,4%
Hannover	398	-58,5%	49.693	-41,6%
Köln/Bonn	1.165	-38,0%	93.817	-40,1%
Leipzig/Halle	1.146	5,7%	74.104	-15,9%
München	1.464	-73,9%	150.740	-64,0%
Münster/Osnabrück	127	-69,4%	28.500	-23,3%
Nürnberg	203	-73,9%	32.589	-48,7%
Saarbrücken	19	-83,2%	8.177	-34,3%
Stuttgart	598	-64,4%	65.396	-56,0%

Additional information:

Münster reported no glider movements for the current week, i.e. 3.154 glider movements for the cumulated year.



### IFR flights at regional German airports - in detail

IFR events (take-offs and landings) at the different regional towers in the Federal Republic of Germany with control zone and barely any PPR.

	2020	2019	Trend
<b>Week 52</b>	953	1.539	-38,1%
<b>Cumulated Weeks</b>	104.871	162.342	-35,4%

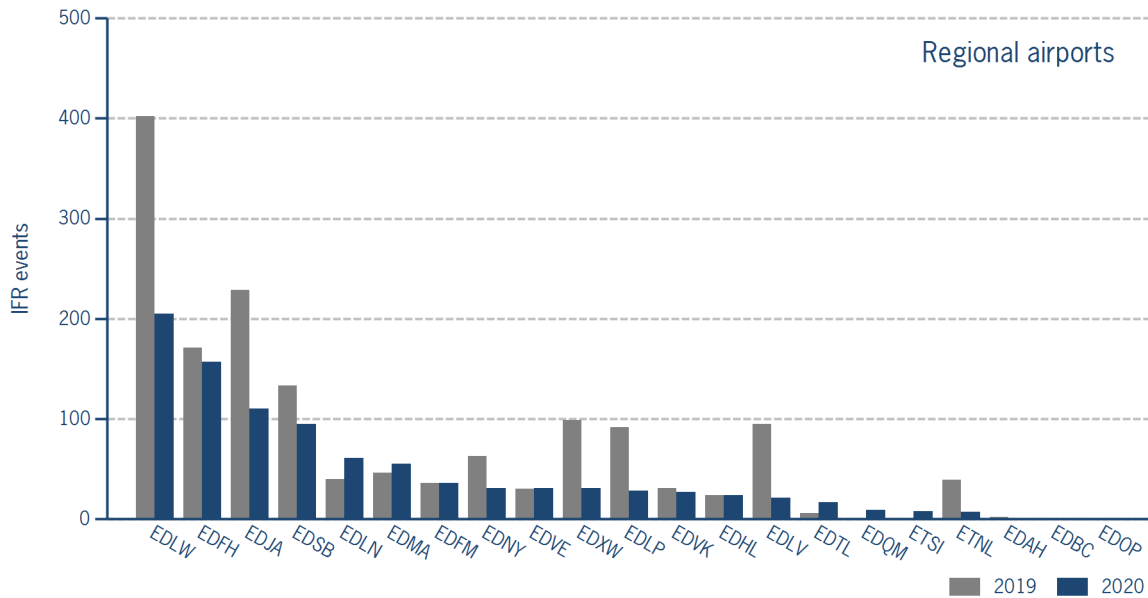
	Week 52	Trend	Week 1 - 52	Trend
EDAH Heringsdorf	0	-100,0%	551	-44,3%
EDBC Magdeburg/Cochstedt	0	N/A	0	-100,0%
EDFH Frankfurt-Hahn	157	-8,2%	11.059	-31,6%
EDFM Mannheim City	36	0,0%	4.709	-29,1%
EDHL Lübeck-Blankensee	24	0,0%	2.411	-15,6%
EDJA Memmingen	110	-52,0%	9.702	-35,6%
EDLN Mönchengladbach	61	52,5%	6.956	7,5%
EDLP Paderborn/Lippstadt	28	-69,6%	5.644	-57,5%
EDLV Niederrhein	21	-77,9%	3.524	-62,1%
EDLW Dortmund	205	-49,0%	16.314	-32,6%
EDMA Augsburg	55	19,6%	6.819	-7,8%
EDNY Friedrichshafen	31	-50,8%	4.394	-59,3%
EDOP Schwerin-Parchim	0	N/A	0	-100,0%
EDQM Hof-Plauen	9	N/A	1.314	-12,6%
EDSB Karlsruhe/Baden-Baden	95	-28,6%	8.341	-33,1%
EDTL Lahr	17	183,3%	1.216	-23,0%
EDVE Braunschweig-Wolfsburg	31	3,3%	5.408	-41,2%
EDVK Kassel-Calden	27	-12,9%	3.825	-20,8%
EDXW Sylt	31	-68,7%	4.998	-15,4%
ETNL Laage	7	-82,1%	4.862	-43,3%
ETSI Ingolstadt/Manching	8	OLC*	2.824	-44,3%

\*The value is of limited conclusiveness (OLC).

Please note: The airport Magdeburg-Cochstedt (EDBC) is currently closed and the airport Sylt (EDXW) is now assigned to Austro Control.

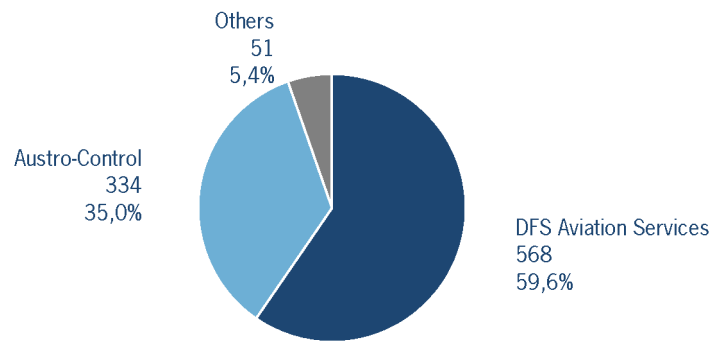
### IFR flights at regional German airports - in detail

IFR events (take-offs and landings) at the different regional towers in the Federal Republic of Germany with control zone and barely any PPR.



### IFR flights at regional German airports - air traffic service providers

Percentage of IFR events (take-offs and landings) at the regional towers in the Federal Republic of Germany differentiated between DFS Aviation Services, Austro Control and other providers.



- DFS Aviation Services: Dortmund (EDLW), Friedrichshafen (EDNY), Karlsruhe/Baden-Baden (EDSB), Lahr (EDTL), Magdeburg/Cochstedt (EDBC), Memmingen (EDJA), Mönchengladbach (EDLN), Niederrhein (EDLV), Paderborn/Lippstadt (EDLP)
- Austro Control: Augsburg (EDMA), Braunschweig-Wolfsburg (EDVE), Frankfurt-Hahn (EDFH), Heringsdorf (EDAH), Hof-Plauen (EDQM), Kassel-Calden (EDVK), Lübeck-Blankensee (EDHL), Schwerin-Parchim (EDOP), Sylt (EDXW)
- Others: Ingolstadt/Manching (ETSI), Laage (ETNL), Mannheim City (EDFM)



## ATFM Arrival Delay

(Data Source: NM statistics, DFS LIZ)

ATFM Arrival Delay with reference to the relevant airport, in minutes per IFR arrival.

*ATFM Arrival Delay:*  
*sum of all arrival ATFM delay divided by the sum of all inbound flights for the particular traffic volume*

Airports		ATC Delay [min/arrival]	non ATC Delay [min/arrival]
	All Airports	0	0,0618
EDDK	Köln/Bonn	0	0,5759

Please note: The ATFM delay data are provided by NM statistics. Due to internal distribution of the ATFM delay, data are modified by CC/FC and TWR/M. The inbound flight information is based on LIZ statistics.

All Airports means all international German airports: Berlin-Brandenburg (EDDB), Berlin-Tegel (EDDT), Bremen (EDDW), Dresden (EDDC), Düsseldorf (EDDL), Erfurt/Weimar (EDDE), Frankfurt/Main (EDDF), Hamburg (EDDH), Hannover (EDDV), Köln/Bonn (EDDK), Leipzig/Halle (EDDP), München (EDDM), Münster/Osnabrück (EDDG), Nürnberg (EDDN), Saarbrücken (EDDR), Stuttgart (EDDS)