



LIZ Bulletin

DFS Situation and Information Centre

Week 49

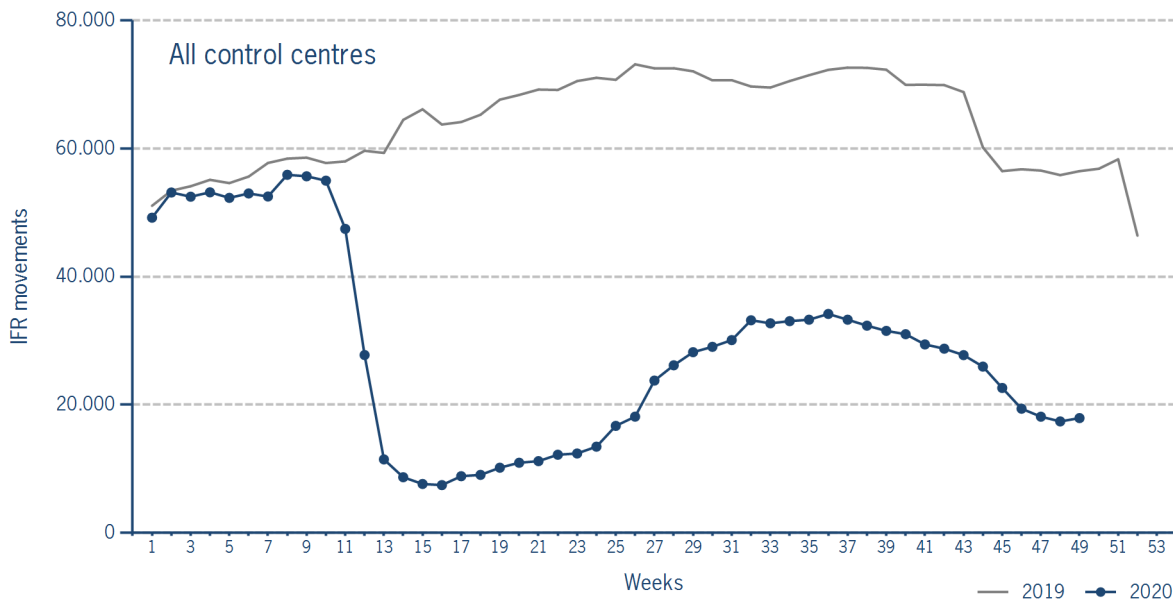
30 NOV 2020 - 6 DEC 2020

Version 08.12.2020

IFR flights in the Federal Republic of Germany

IFR movements (entries, exits, overflights and domestics) in all control sectors with a German designator.

	2020	2019	Trend
Week 49	17.901	56.477	-68,3%
Cumulated Weeks	1.404.689	3.167.893	-55,7%

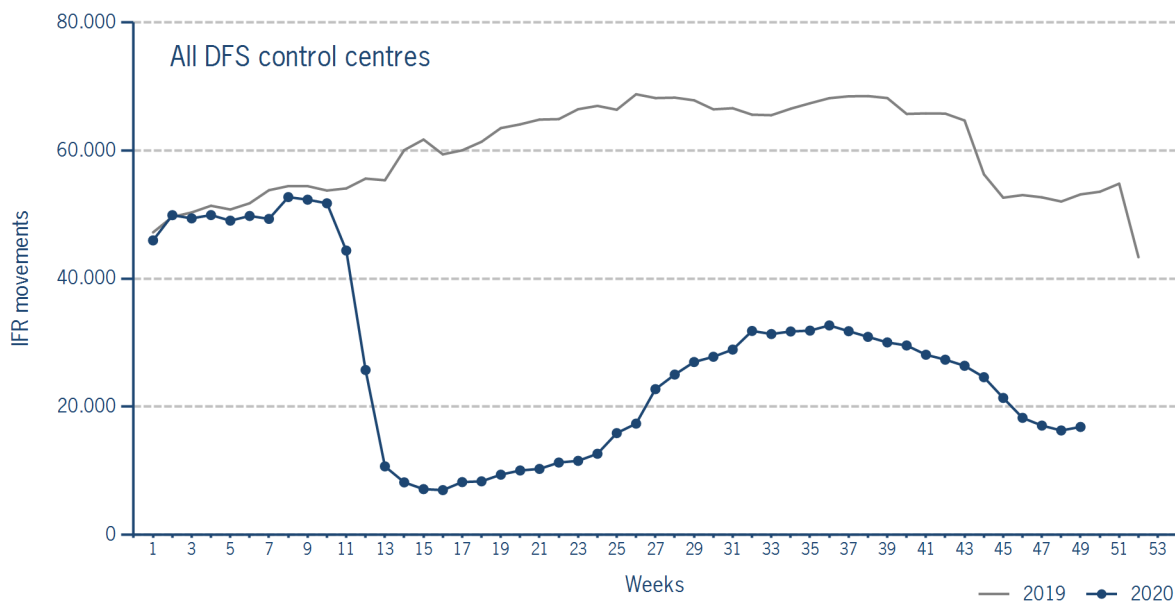


Please note: This count covers the traffic in the area build by all control sectors with a German designator („ED“), regardless of the service provider, including civil and military traffic in sectors controlled by DFS and Maastricht UAC (Maastricht-Hannover sectors). The area counted is composed of modular control sectors designed for ATC purposes with partly cross border structures and is therefore not identical to the political border of the Federal Republic of Germany or the national Flight Information Region (FIR).

IFR flights controlled by DFS

IFR movements (entries, exits, overflights and domestics) in control sectors controlled by DFS.

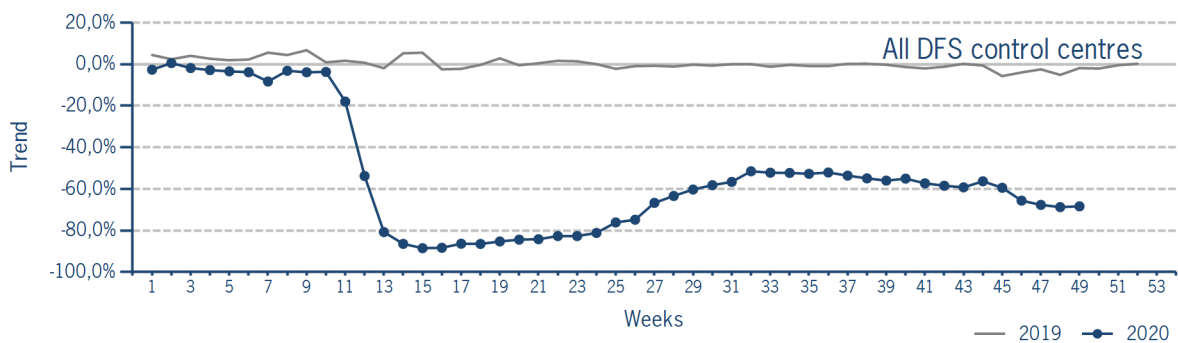
	2020	2019	Trend
Week 49	16.831	53.158	-68,3%
Cumulated Weeks	1.327.642	2.969.155	-55,3%



Please note: This count covers the traffic in the area build by control sectors of DFS control centres, including civil and military traffic. Traffic in Maastricht UAC (Maastricht-Hannover sectors) is not counted.

IFR flights controlled by DFS - trend

Trend in the number of IFR movements (entries, exits, overflights and domestics) in control sectors controlled by DFS.

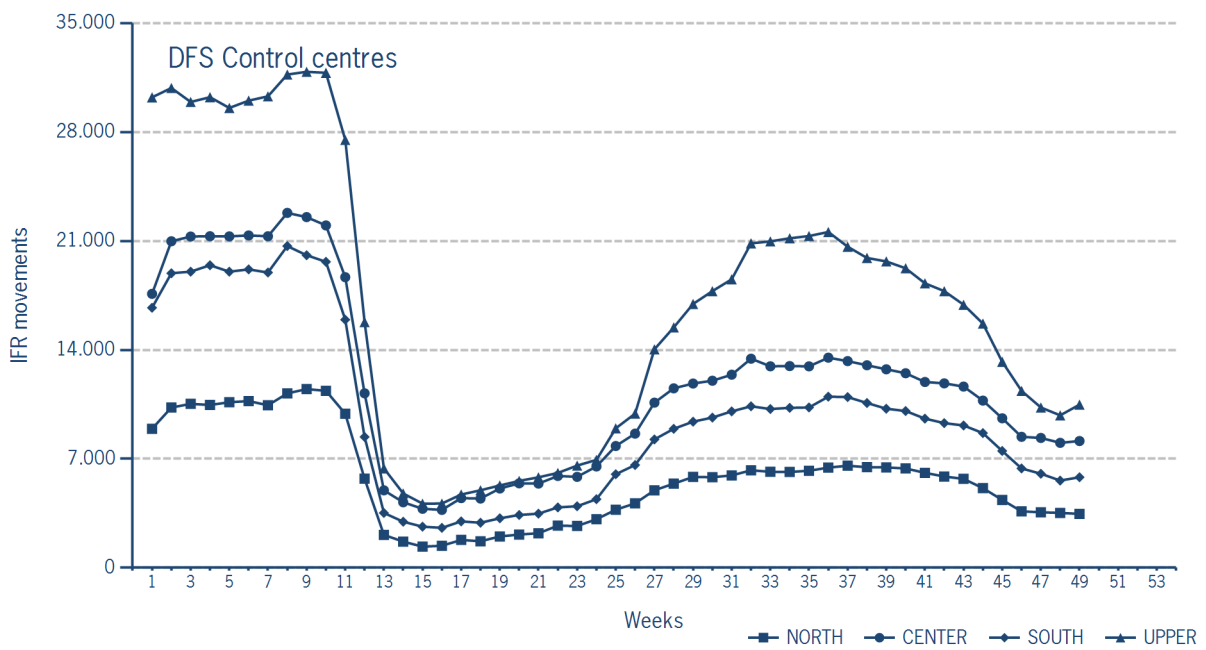


IFR flights controlled by DFS - in detail

IFR movements (entries, exits, overflights and domestics) controlled by DFS at the different control centres.

	NORTH	CENTER	SOUTH	UPPER
Week 49	3.461	8.145	5.818	10.483
Trend	-70,7%	-64,5%	-71,3%	-67,2%
Cumulated Weeks	280.875	583.060	476.800	825.992
Trend	-55,7%	-54,0%	-57,6%	-52,1%

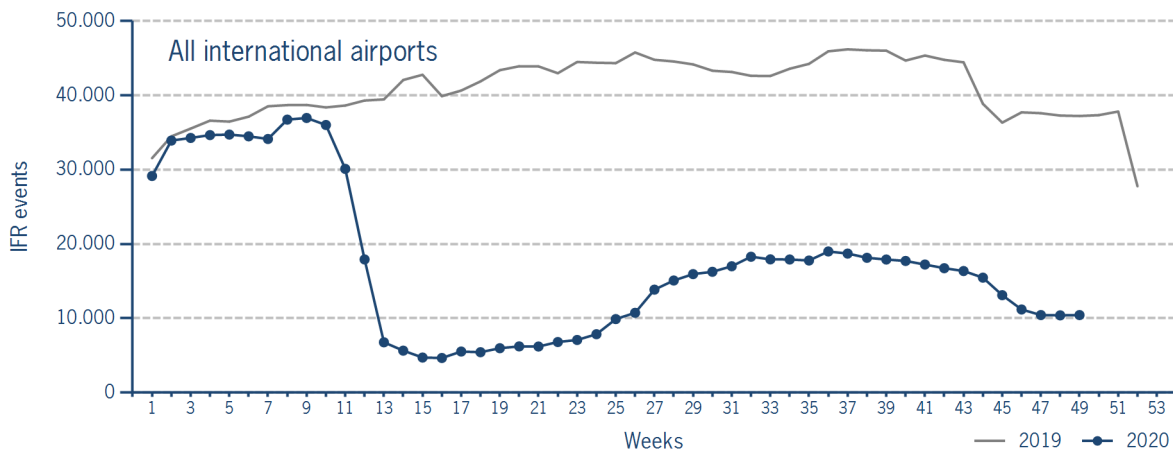
Please note: The trend numbers compare counts of the airspaces in their current configuration to the count of the same airspace in 2019.



IFR flights at international German airports

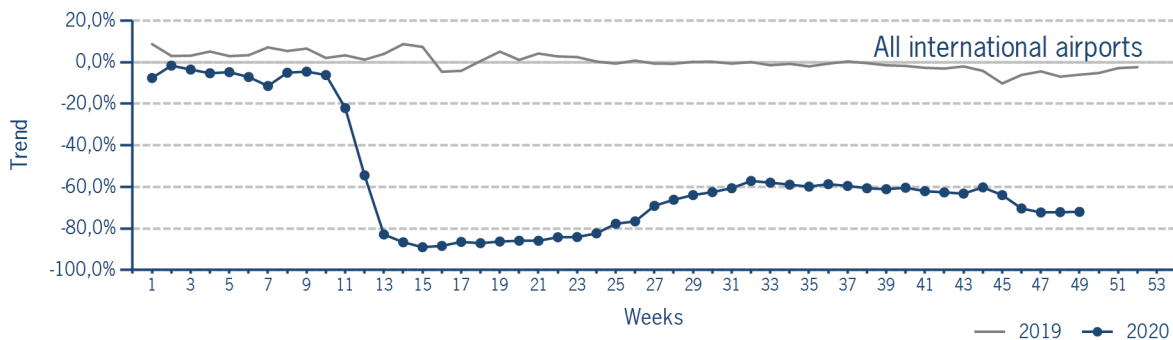
IFR events (take-offs and landings) at the international DFS towers in the Federal Republic of Germany.

	2020	2019	Trend
Week 49	10.434	37.223	-72,0%
Cumulated Weeks	849.497	2.025.316	-58,1%



IFR flights at international German airports - trend

Trend in the number of IFR events (take-offs and landings) at the international DFS towers in the Federal Republic of Germany.



IFR flights at international German airports - airport category

IFR events (take-offs and landings) at the international DFS towers in the Federal Republic of Germany differentiated by Hub Gateways (HUB), International Access Airports 1 (IAA1) and International Access Airports 2 (IAA2).

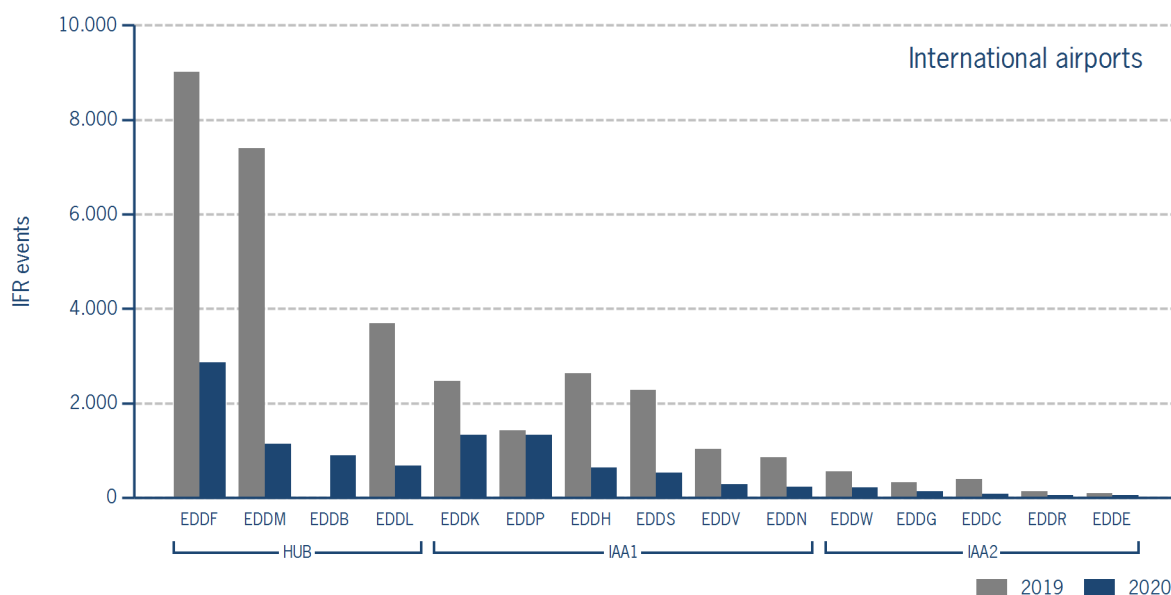
	HUB	IAA1	IAA2
Week 49	5.570	4.322	542
Trend*	-72,3%	-72,4%	-63,4%
Cumulated Weeks*	425.389	383.342	40.766
Trend*	-61,2%	-55,0%	-47,9%

*Please note: Berlin-Schönefeld used to be listed as IAA1. Berlin-Brandenburg ist listed as a HUB.

IFR flights at international German airports - in detail

IFR events (take-offs and landings) at the different international DFS towers in the Federal Republic of Germany.

		Week 49	Trend	Week 1 - 49	Trend
HUB					
EDDB	Berlin-Brandenburg	892	N/A	4.495	N/A
EDDF	Frankfurt/Main	2.857	-68,3%	202.876	-58,4%
EDDL	Düsseldorf	678	-81,6%	76.833	-64,2%
EDDM	München	1.143	-84,6%	141.000	-64,1%
IAA1					
EDDB	Berlin-Schönefeld	0	N/A	35.367	N/A
EDDH	Hamburg	630	-76,0%	58.332	-58,8%
EDDK	Köln/Bonn	1.334	-46,1%	75.714	-43,9%
EDDN	Nürnberg	224	-73,8%	19.765	-57,9%
EDDP	Leipzig/Halle	1.331	-6,9%	58.072	-18,6%
EDDS	Stuttgart	521	-77,2%	48.536	-61,6%
EDDT	Berlin-Tegel	0	N/A	61.283	N/A
EDDV	Hannover	282	-72,7%	26.458	-57,2%
IAA2					
EDDC	Dresden	80	-79,3%	8.572	-56,4%
EDDE	Erfurt/Weimar	55	-38,9%	3.463	-23,3%
EDDG	Münster/Osnabrück	135	-58,1%	10.177	-43,6%
EDDR	Saarbrücken	55	-58,3%	3.953	-48,1%
EDDW	Bremen	217	-60,5%	14.601	-48,8%



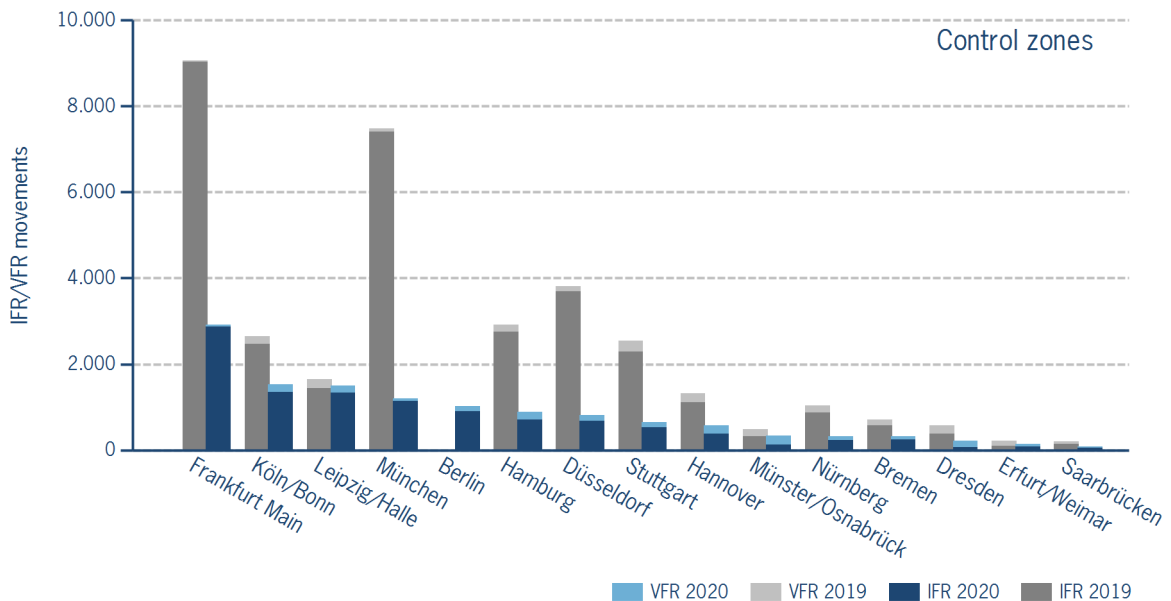
IFR/VFR flights in control zones of DFS towers

IFR/VFR movements (entries, exits, overflights and domestics) at the different control zones of international DFS towers.

	Week 49	Trend	Week 1 - 49	Trend
Berlin	1.027	N/A	5.142	N/A
Berlin-Schönefeld	0	N/A	48.820	N/A
Berlin-Tegel	0	N/A	69.430	N/A
Bremen	321	-54,9%	25.344	-37,4%
Dresden	222	-60,9%	21.137	-36,3%
Düsseldorf	816	-78,6%	84.369	-61,8%
Erfurt/Weimar	144	-34,5%	9.408	-20,6%
Frankfurt Main	2.921	-67,8%	208.680	-57,7%
Hamburg	886	-69,6%	82.419	-50,7%
Hannover	572	-56,6%	47.790	-41,3%
Köln/Bonn	1.526	-42,2%	89.281	-40,2%
Leipzig/Halle	1.504	-8,5%	69.896	-16,5%
München	1.202	-83,9%	146.517	-63,2%
Münster/Osnabrück	344	-28,6%	27.672	-22,2%
Nürnberg	323	-68,9%	31.782	-47,6%
Saarbrücken	90	-56,5%	7.957	-33,4%
Stuttgart	645	-74,7%	63.169	-55,5%

Additional information:

Münster reported no glider movements for the current week, i.e. 3.154 glider movements for the cumulated year.



IFR flights at regional German airports - in detail

IFR events (take-offs and landings) at the different regional towers in the Federal Republic of Germany with control zone and barely any PPR.

	2020	2019	Trend
Week 49	1.451	2.838	-48,9%
Cumulated Weeks	100.457	155.026	-35,2%

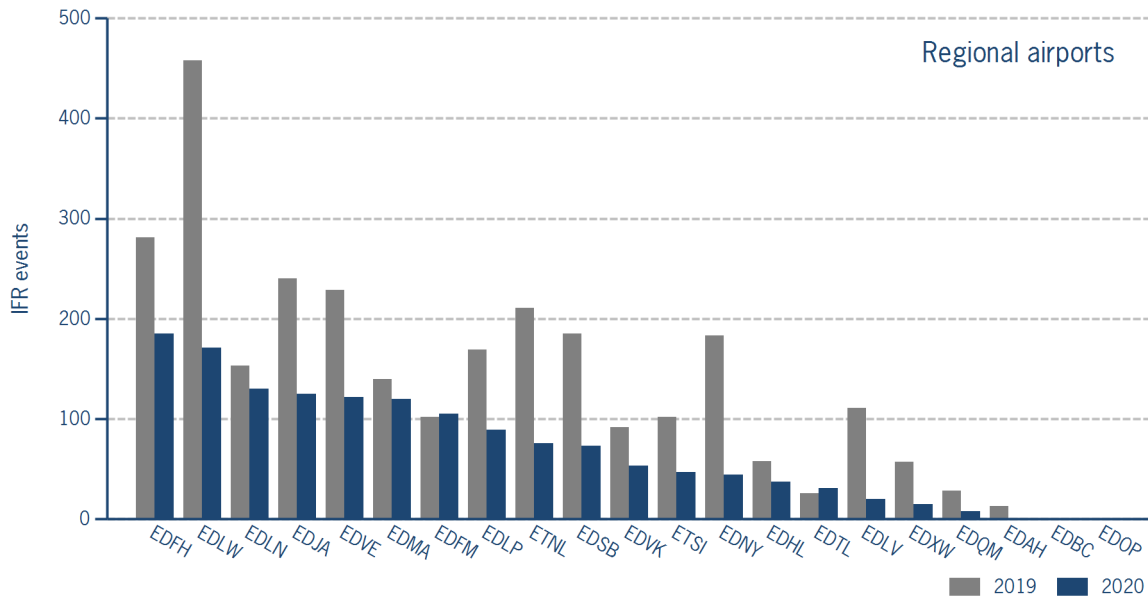
	Week 49	Trend	Week 1 - 49	Trend
EDAH Heringsdorf	0	-100,0%	543	-42,8%
EDBC Magdeburg/Cochstedt	0	N/A	0	-100,0%
EDFH Frankfurt-Hahn	185	-34,2%	10.525	-32,0%
EDFM Mannheim City	105	2,9%	4.525	-28,8%
EDHL Lübeck-Blankensee	37	-36,2%	2.275	-15,9%
EDJA Memmingen	125	-47,9%	9.312	-35,0%
EDLN Mönchengladbach	130	-15,0%	6.558	5,5%
EDLP Paderborn/Lippstadt	89	-47,3%	5.398	-57,9%
EDLV Niederrhein	20	-82,0%	3.446	-61,7%
EDLW Dortmund	171	-62,7%	15.608	-31,6%
EDMA Augsburg	120	-14,3%	6.488	-8,1%
EDNY Friedrichshafen	44	-76,0%	4.274	-58,6%
EDOP Schwerin-Parchim	0	N/A	0	-100,0%
EDQM Hof-Plauen	8	-71,4%	1.265	-12,1%
EDSB Karlsruhe/Baden-Baden	73	-60,5%	8.025	-32,6%
EDTL Lahr	31	19,2%	1.160	-22,5%
EDVE Braunschweig-Wolfsburg	122	-46,7%	5.138	-41,9%
EDVK Kassel-Calden	53	-42,4%	3.660	-20,6%
EDXW Sylt	15	-73,7%	4.886	-14,1%
ETNL Laage	76	-64,0%	4.686	-42,2%
ETSI Ingolstadt/Manching	47	-53,9%	2.685	-44,9%

*The value is of limited conclusiveness (OLC).

Please note: The airport Magdeburg-Cochstedt (EDBC) is currently closed and the airport Sylt (EDXW) is now assigned to Austro Control.

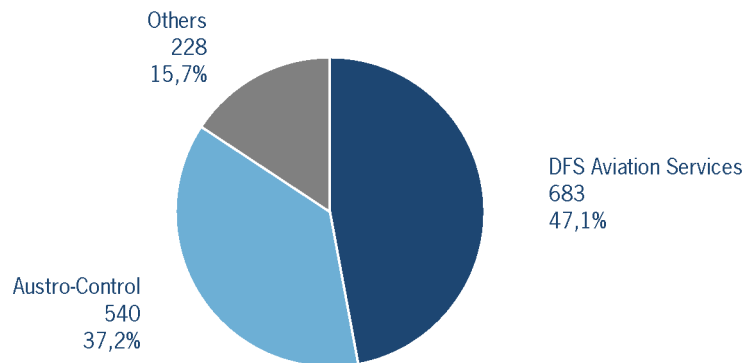
IFR flights at regional German airports - in detail

IFR events (take-offs and landings) at the different regional towers in the Federal Republic of Germany with control zone and barely any PPR.



IFR flights at regional German airports - air traffic service providers

Percentage of IFR events (take-offs and landings) at the regional towers in the Federal Republic of Germany differentiated between DFS Aviation Services, Austro Control and other providers.



- DFS Aviation Services: Dortmund (EDLW), Friedrichshafen (EDNY), Karlsruhe/Baden-Baden (EDSB), Lahr (EDTL), Magdeburg/Cochstedt (EDBC), Memmingen (EDJA), Mönchengladbach (EDLN), Niederrhein (EDLV), Paderborn/Lippstadt (EDLP)
- Austro Control: Augsburg (EDMA), Braunschweig-Wolfsburg (EDVE), Frankfurt-Hahn (EDFH), Heringsdorf (EDAH), Hof-Plauen (EDQM), Kassel-Calden (EDVK), Lübeck-Blankensee (EDHL), Schwerin-Parchim (EDOP), Sylt (EDXW)
- Others: Ingolstadt/Manching (ETSI), Laage (ETNL), Mannheim City (EDFM)

ATFM Arrival Delay

(Data Source: NM statistics, DFS LIZ)

ATFM Arrival Delay with reference to the relevant airport, in minutes per IFR arrival.

ATFM Arrival Delay:

sum of all arrival ATFM delay divided by the sum of all inbound flights for the particular traffic volume

No ATFM Delay

Please note: The ATFM delay data are provided by NM statistics. Due to internal distribution of the ATFM delay, data are modified by CC/FC and TWR/M. The inbound flight information is based on LIZ statistics.

All Airports means all international German airports: Berlin-Brandenburg (EDDB), Berlin-Tegel (EDDT), Bremen (EDDW), Dresden (EDDC), Düsseldorf (EDDL), Erfurt/Weimar (EDDE), Frankfurt/Main (EDDF), Hamburg (EDDH), Hannover (EDDV), Köln/Bonn (EDDK), Leipzig/Halle (EDDP), München (EDDM), Münster/Osnabrück (EDDG), Nürnberg (EDDN), Saarbrücken (EDDR), Stuttgart (EDDS)