



# LIZ Bulletin

DFS Situation and Information Centre

**Week 47**

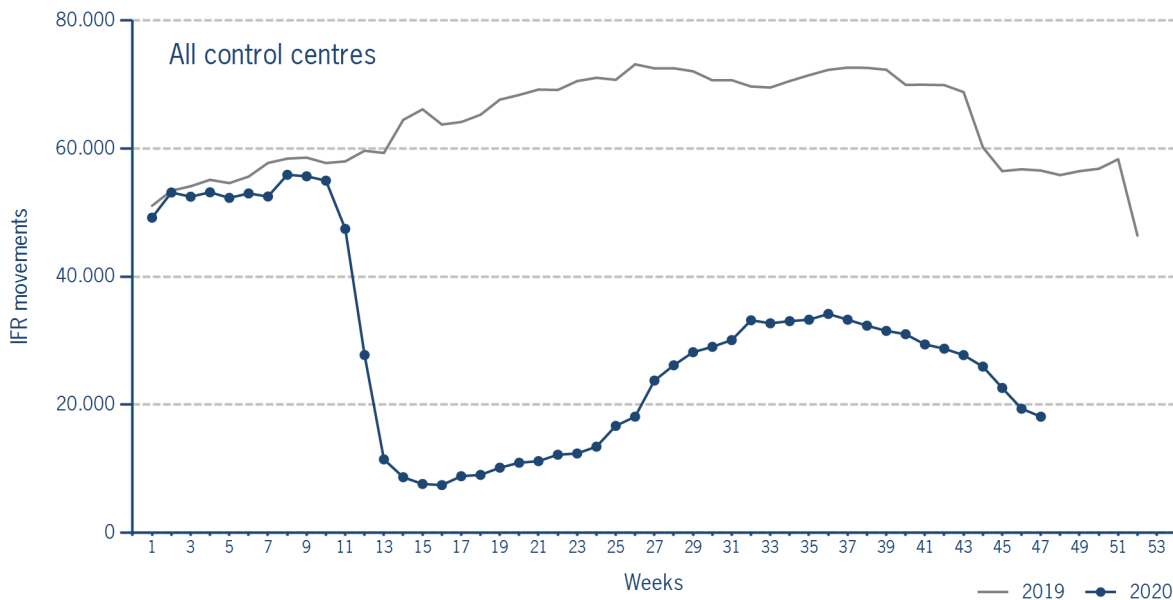
16 NOV 2020 - 22 NOV 2020

Version 25.11.2020

## IFR flights in the Federal Republic of Germany

IFR movements (entries, exits, overflights and domestics) in all control sectors with a German designator.

	2020	2019	Trend
<b>Week 47</b>	18.124	56.568	-68,0%
<b>Cumulated Weeks</b>	1.369.407	3.055.557	-55,2%

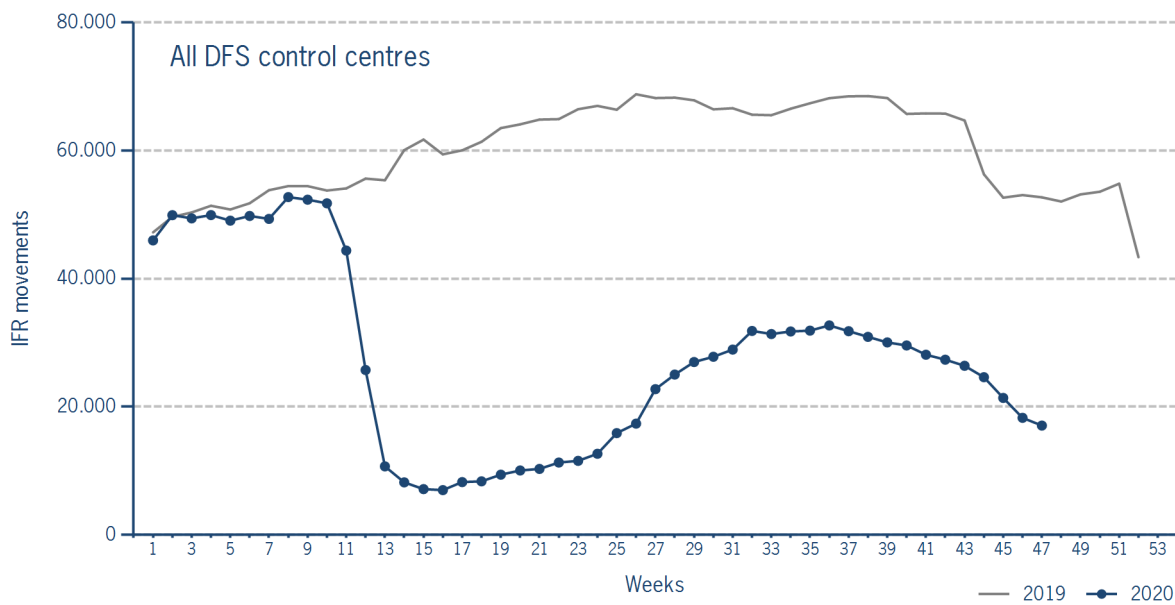


Please note: This count covers the traffic in the area build by all control sectors with a German designator („ED“), regardless of the service provider, including civil and military traffic in sectors controlled by DFS and Maastricht UAC (Maastricht-Hannover sectors). The area counted is composed of modular control sectors designed for ATC purposes with partly cross border structures and is therefore not identical to the political border of the Federal Republic of Germany or the national Flight Information Region (FIR).

### IFR flights controlled by DFS

IFR movements (entries, exits, overflights and domestics) in control sectors controlled by DFS.

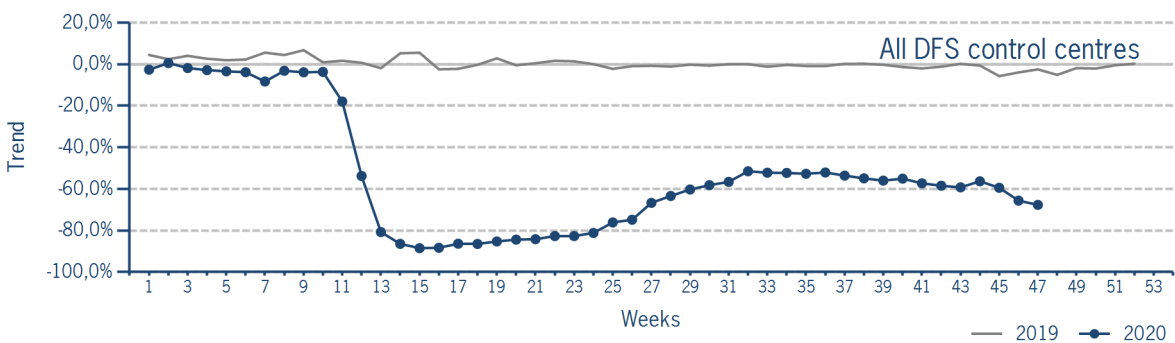
	2020	2019	Trend
<b>Week 47</b>	17.047	52.699	-67,7%
<b>Cumulated Weeks</b>	1.294.527	2.863.952	-54,8%



Please note: This count covers the traffic in the area build by control sectors of DFS control centres, including civil and military traffic. Traffic in Maastricht UAC (Maastricht-Hannover sectors) is not counted.

### IFR flights controlled by DFS - trend

Trend in the number of IFR movements (entries, exits, overflights and domestics) in control sectors controlled by DFS.

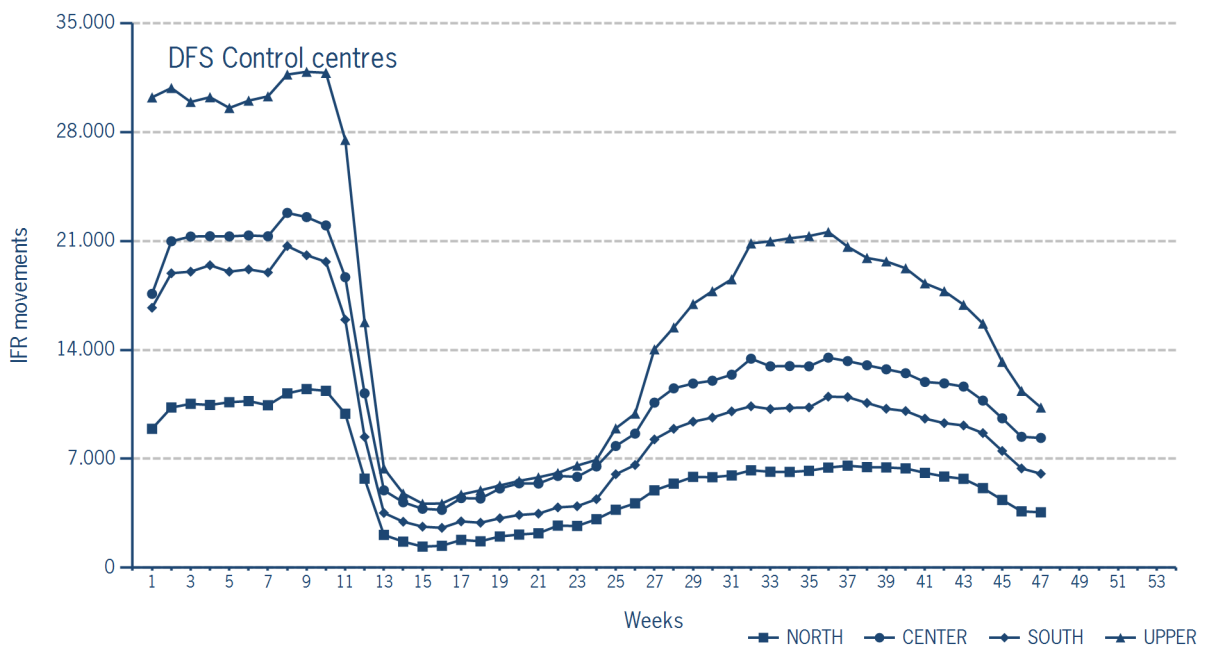


### IFR flights controlled by DFS - in detail

IFR movements (entries, exits, overflights and domestics) controlled by DFS at the different control centres.

	NORTH	CENTER	SOUTH	UPPER
<b>Week 47</b>	3.565	8.343	6.042	10.300
<b>Trend</b>	-68,9%	-64,5%	-70,0%	-66,8%
<b>Cumulated Weeks</b>	273.888	566.886	465.379	805.715
<b>Trend</b>	-55,2%	-53,6%	-57,1%	-51,5%

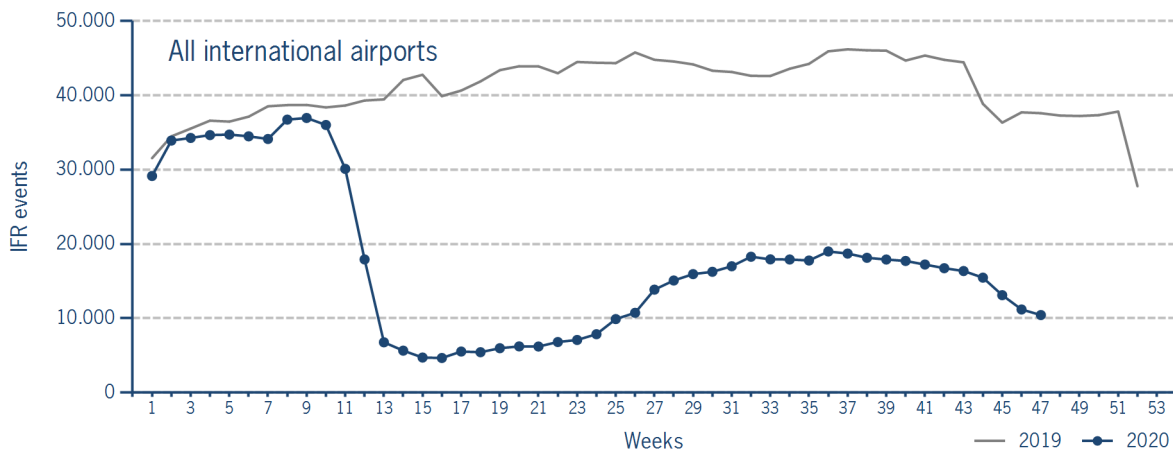
Please note: The trend numbers compare counts of the airspaces in their current configuration to the count of the same airspace in 2019.



### IFR flights at international German airports

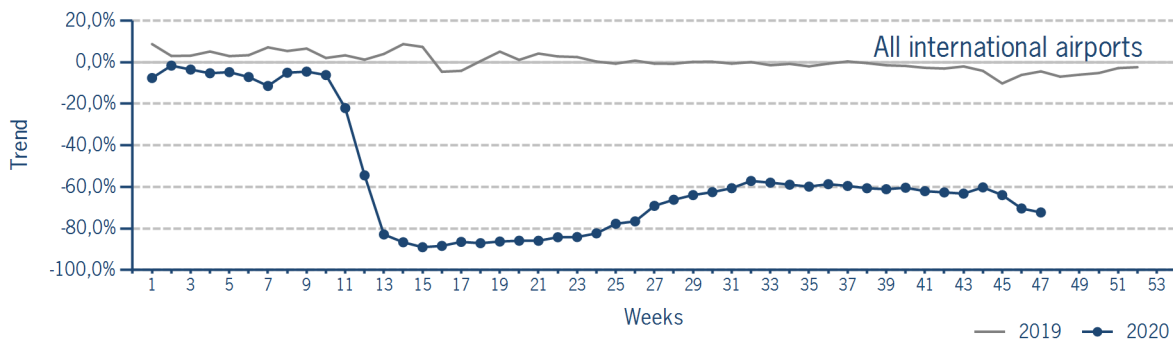
IFR events (take-offs and landings) at the international DFS towers in the Federal Republic of Germany.

	2020	2019	Trend
<b>Week 47</b>	10.437	37.597	-72,2%
<b>Cumulated Weeks</b>	828.666	1.950.815	-57,5%



### IFR flights at international German airports - trend

Trend in the number of IFR events (take-offs and landings) at the international DFS towers in the Federal Republic of Germany.



### IFR flights at international German airports - airport category

IFR events (take-offs and landings) at the international DFS towers in the Federal Republic of Germany differentiated by Hub Gateways (HUB), International Access Airports 1 (IAA1) and International Access Airports 2 (IAA2).

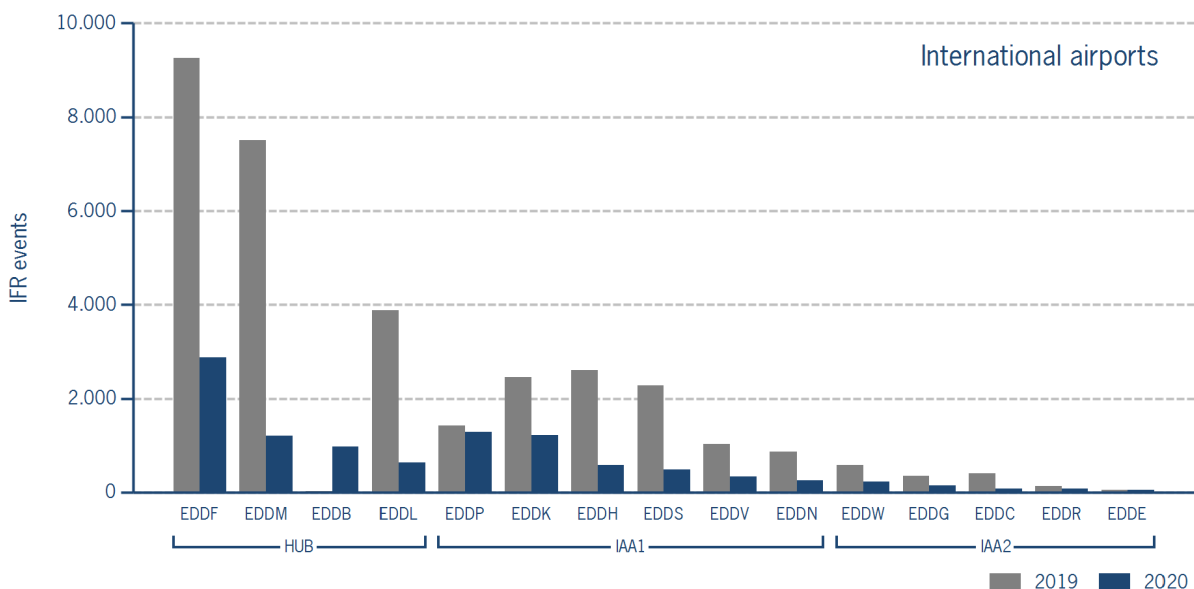
	HUB	IAA1	IAA2
<b>Week 47</b>	5.692	4.171	574
<b>Trend*</b>	-72,4%	-72,9%	-62,5%
<b>Cumulated Weeks*</b>	414.429	374.705	39.532
<b>Trend*</b>	-60,7%	-54,3%	-47,5%

\*Please note: Berlin-Schönefeld used to be listed as IAA1. Berlin-Brandenburg is listed as a HUB.

IFR flights at international German airports - in detail

IFR events (take-offs and landings) at the different international DFS towers in the Federal Republic of Germany.

		Week 47	Trend	Week 1 - 47	Trend
<b>HUB</b>					
EDDB	Berlin-Brandenburg	978	N/A	2.676	N/A
EDDF	Frankfurt/Main	2.871	-69,0%	197.289	-58,0%
EDDL	Düsseldorf	636	-83,6%	75.529	-63,5%
EDDM	München	1.207	-83,9%	138.750	-63,3%
<b>IAA1</b>					
EDDB	Berlin-Schönefeld	0	N/A	35.367	N/A
EDDH	Hamburg	585	-77,6%	57.099	-58,2%
EDDK	Köln/Bonn	1.223	-50,3%	73.086	-43,8%
EDDN	Nürnberg	257	-70,5%	19.336	-57,3%
EDDP	Leipzig/Halle	1.281	-9,9%	55.432	-19,1%
EDDS	Stuttgart	488	-78,6%	47.465	-61,0%
EDDT	Berlin-Tegel	0	N/A	61.283	N/A
EDDV	Hannover	337	-67,3%	25.822	-56,8%
<b>IAA2</b>					
EDDC	Dresden	78	-80,7%	8.417	-55,4%
EDDE	Erfurt/Weimar	48	-17,2%	3.311	-24,0%
EDDG	Münster/Osnabrück	146	-58,4%	9.847	-43,3%
EDDR	Saarbrücken	78	-42,6%	3.803	-48,2%
EDDW	Bremen	224	-61,4%	14.154	-48,4%



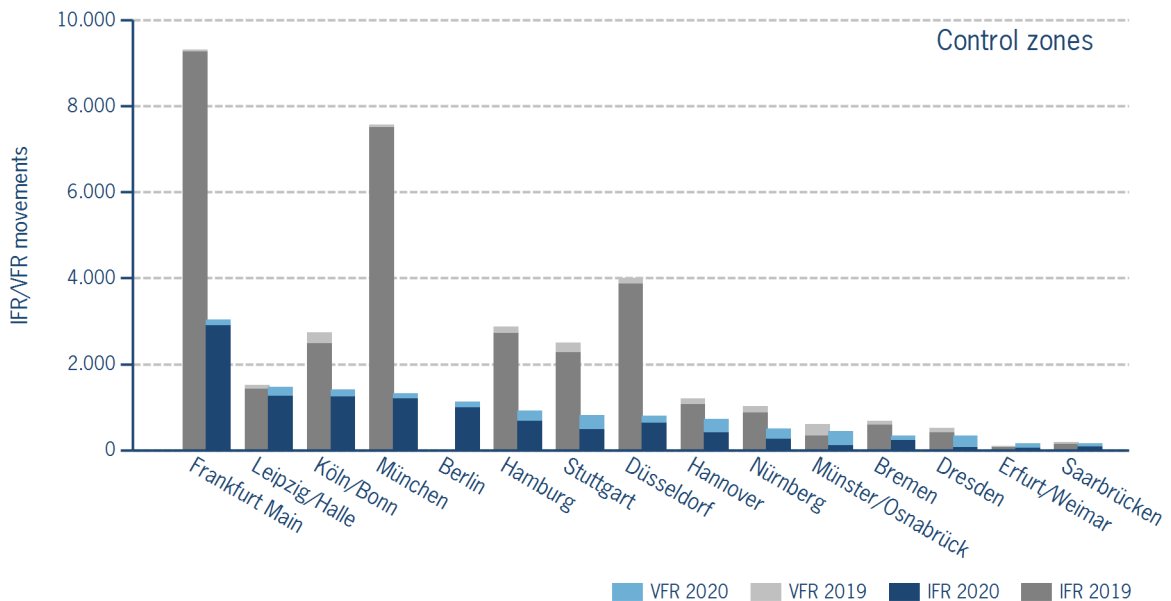
IFR/VFR flights in control zones of DFS towers

IFR/VFR movements (entries, exits, overflights and domestics) at the different control zones of international DFS towers.

	Week 47	Trend	Week 1 - 47	Trend
Berlin	1.120	N/A	3.095	N/A
Berlin-Schönefeld	0	N/A	48.820	N/A
Berlin-Tegel	0	N/A	69.431	N/A
Bremen	340	-50,2%	24.640	-37,0%
Dresden	332	-35,9%	20.679	-35,5%
Düsseldorf	798	-80,1%	82.748	-61,2%
Erfurt/Weimar	157	55,4%	9.059	-21,1%
Frankfurt Main	3.038	-67,4%	202.972	-57,3%
Hamburg	923	-67,8%	80.607	-50,1%
Hannover	726	-39,4%	46.462	-41,0%
Köln/Bonn	1.413	-48,5%	86.178	-40,1%
Leipzig/Halle	1.476	-2,6%	66.936	-16,8%
München	1.328	-82,5%	144.179	-62,4%
Münster/Osnabrück	438	-27,1%	26.785	-22,4%
Nürnberg	494	-51,5%	31.158	-46,9%
Saarbrücken	151	-19,3%	7.715	-33,2%
Stuttgart	813	-67,4%	61.724	-55,0%

Additional information:

Münster reported no glider movements for the current week, i.e. 3.154 glider movements for the cumulated year.



### IFR flights at regional German airports - in detail

IFR events (take-offs and landings) at the different regional towers in the Federal Republic of Germany with control zone and barely any PPR.

	2020	2019	Trend
<b>Week 47</b>	1.673	2.908	-42,5%
<b>Cumulated Weeks</b>	97.405	149.291	-34,8%

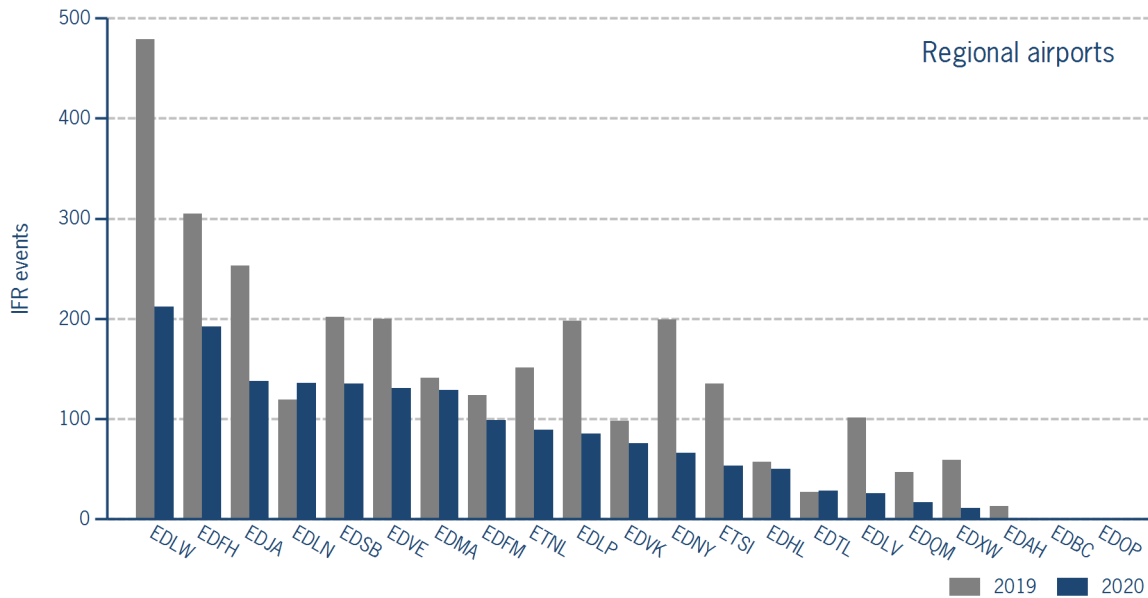
	Week 47	Trend	Week 1 - 47	Trend
EDAH Heringsdorf	0	-100,0%	541	-41,6%
EDBC Magdeburg/Cochstedt	0	N/A	0	-100,0%
EDFH Frankfurt-Hahn	192	-37,0%	10.185	-31,8%
EDFM Mannheim City	99	-20,2%	4.321	-29,4%
EDHL Lübeck-Blankensee	50	-12,3%	2.195	-15,0%
EDJA Memmingen	138	-45,5%	9.103	-34,1%
EDLN Mönchengladbach	136	14,3%	6.242	5,3%
EDLP Paderborn/Lippstadt	85	-57,1%	5.195	-58,3%
EDLV Niederrhein	26	-74,3%	3.394	-61,2%
EDLW Dortmund	212	-55,7%	15.162	-30,7%
EDMA Augsburg	129	-8,5%	6.257	-7,8%
EDNY Friedrichshafen	66	-66,8%	4.183	-58,0%
EDOP Schwerin-Parchim	0	N/A	0	-100,0%
EDQM Hof-Plauen	17	-63,8%	1.252	-10,1%
EDSB Karlsruhe/Baden-Baden	135	-33,2%	7.845	-31,9%
EDTL Lahr	28	3,7%	1.114	-22,4%
EDVE Braunschweig-Wolfsburg	131	-34,5%	4.876	-41,9%
EDVK Kassel-Calden	76	-22,4%	3.531	-20,6%
EDXW Sylt	11	-81,4%	4.851	-13,2%
ETNL Laage	89	-41,1%	4.556	-40,9%
ETSI Ingolstadt/Manching	53	-60,7%	2.602	-44,3%

\*The value is of limited conclusiveness (OLC).

Please note: The airport Magdeburg-Cochstedt (EDBC) is currently closed and the airport Sylt (EDXW) is now assigned to Austro Control.

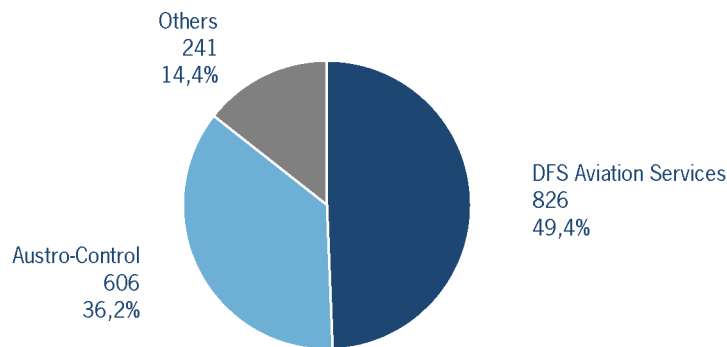
### IFR flights at regional German airports - in detail

IFR events (take-offs and landings) at the different regional towers in the Federal Republic of Germany with control zone and barely any PPR.



### IFR flights at regional German airports - air traffic service providers

Percentage of IFR events (take-offs and landings) at the regional towers in the Federal Republic of Germany differentiated between DFS Aviation Services, Austro Control and other providers.



DFS Aviation Services: Dortmund (EDLW), Friedrichshafen (EDNY), Karlsruhe/Baden-Baden (EDSB), Lahr (EDTL), Magdeburg/Cochstedt (EDBC), Memmingen (EDJA), Mönchengladbach (EDLN), Niederrhein (EDLV), Paderborn/Lippstadt (EDLP)

Austro Control: Augsburg (EDMA), Braunschweig-Wolfsburg (EDVE), Frankfurt-Hahn (EDFH), Heringsdorf (EDAH), Hof-Plauen (EDQM), Kassel-Calden (EDVK), Lübeck-Blankensee (EDHL), Schwerin-Parchim (EDOP), Sylt (EDXW)

Others: Ingolstadt/Manching (ETSI), Laage (ETNL), Mannheim City (EDFM)



## ATFM Arrival Delay

(Data Source: NM statistics, DFS LIZ)

ATFM Arrival Delay with reference to the relevant airport, in minutes per IFR arrival.

*ATFM Arrival Delay:*

*sum of all arrival ATFM delay divided by the sum of all inbound flights for the particular traffic volume*

### No ATFM Delay

Please note: The ATFM delay data are provided by NM statistics. Due to internal distribution of the ATFM delay, data are modified by CC/FC and TWR/M. The inbound flight information is based on LIZ statistics.

All Airports means all international German airports: Berlin-Brandenburg (EDDB), Berlin-Tegel (EDDT), Bremen (EDDW), Dresden (EDDC), Düsseldorf (EDDL), Erfurt/Weimar (EDDE), Frankfurt/Main (EDDF), Hamburg (EDDH), Hannover (EDDV), Köln/Bonn (EDDK), Leipzig/Halle (EDDP), München (EDDM), Münster/Osnabrück (EDDG), Nürnberg (EDDN), Saarbrücken (EDDR), Stuttgart (EDDS)