



LIZ Bulletin

DFS Situation and Information Centre

Week 44

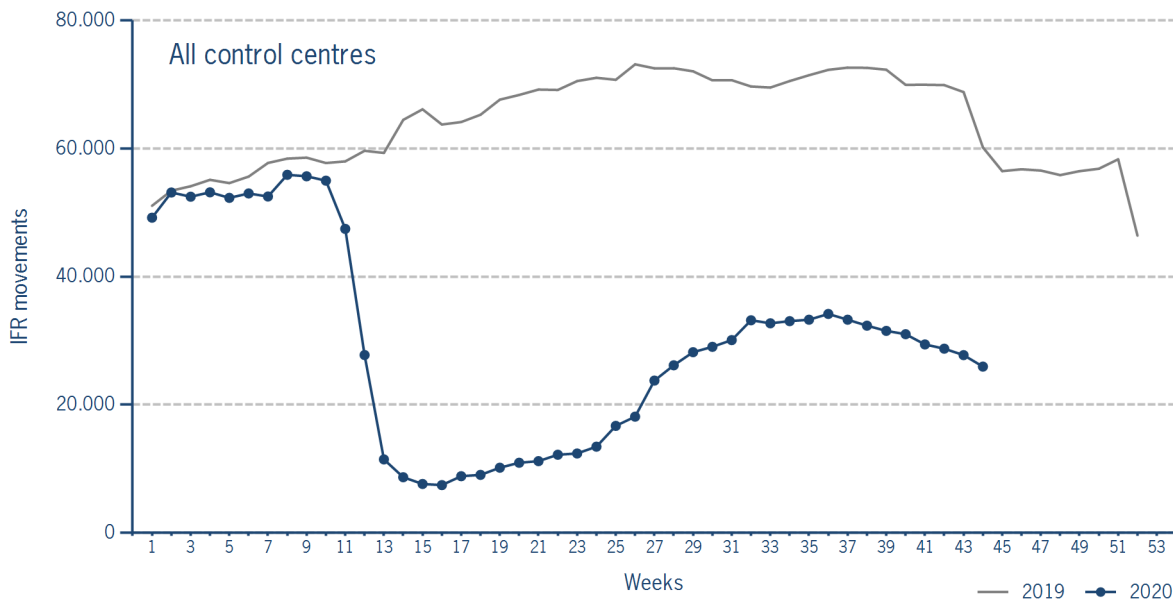
26 OCT 2020 - 1 NOV 2020

Version 03.11.2020

IFR flights in the Federal Republic of Germany

IFR movements (entries, exits, overflights and domestics) in all control sectors with a German designator.

	2020	2019	Trend
Week 44	25.947	60.185	-56,9%
Cumulated Weeks	1.309.301	2.885.740	-54,6%

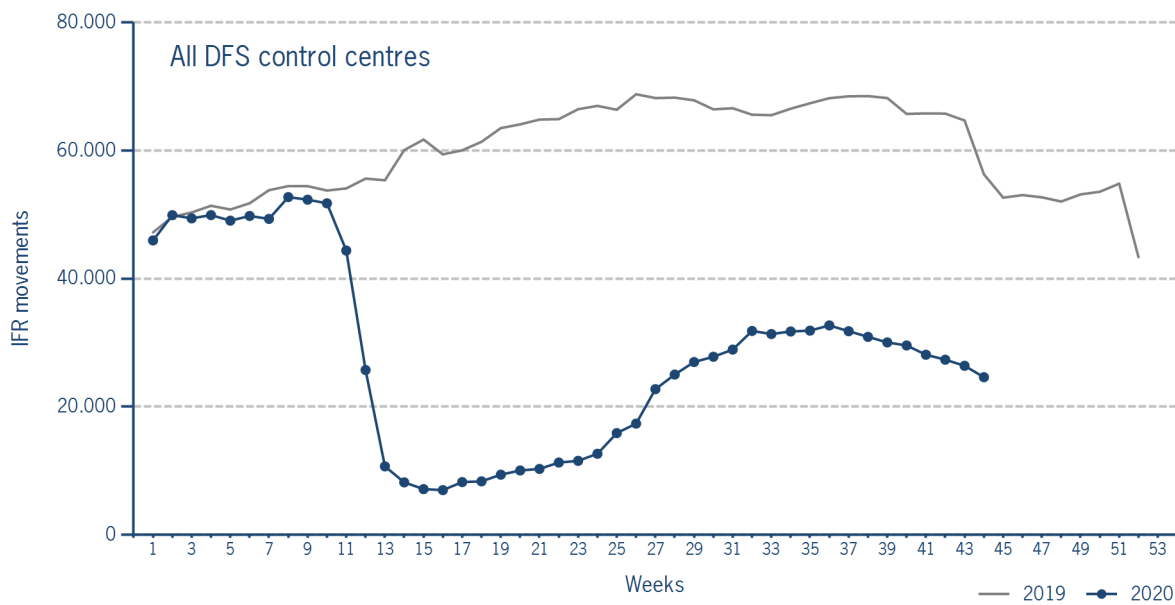


Please note: This count covers the traffic in the area build by all control sectors with a German designator („ED“), regardless of the service provider, including civil and military traffic in sectors controlled by DFS and Maastricht UAC (Maastricht-Hannover sectors). The area counted is composed of modular control sectors designed for ATC purposes with partly cross border structures and is therefore not identical to the political border of the Federal Republic of Germany or the national Flight Information Region (FIR).

IFR flights controlled by DFS

IFR movements (entries, exits, overflights and domestics) in control sectors controlled by DFS.

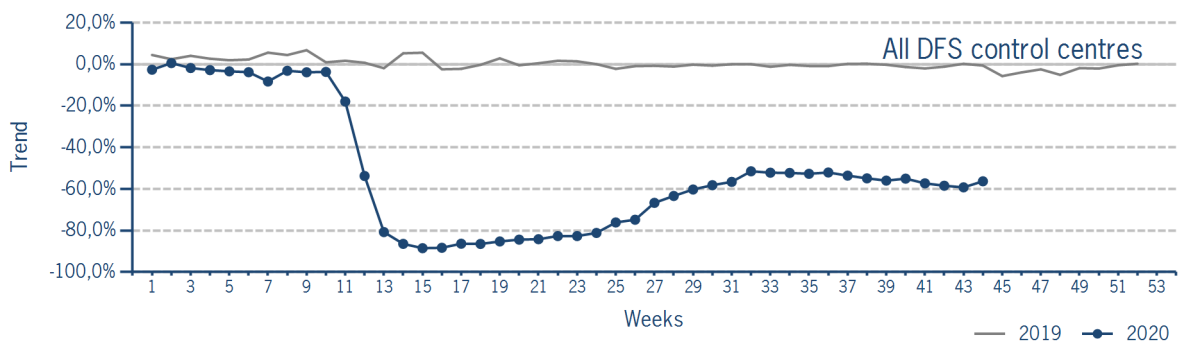
	2020	2019	Trend
Week 44	24.602	56.298	-56,3%
Cumulated Weeks	1.237.861	2.705.554	-54,2%



Please note: This count covers the traffic in the area build by control sectors of DFS control centres, including civil and military traffic. Traffic in Maastricht UAC (Maastricht-Hannover sectors) is not counted.

IFR flights controlled by DFS - trend

Trend in the number of IFR movements (entries, exits, overflights and domestics) in control sectors controlled by DFS.

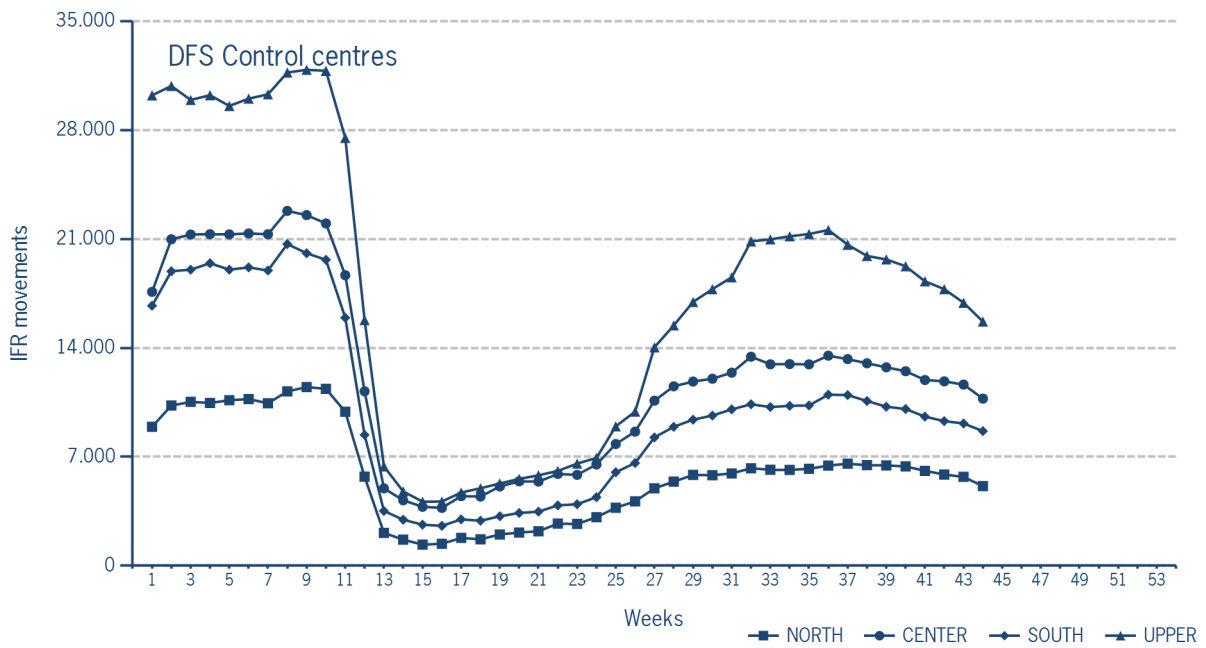


IFR flights controlled by DFS - in detail

IFR movements (entries, exits, overflights and domestics) controlled by DFS at the different control centres.

	NORTH	CENTER	SOUTH	UPPER
Week 44	5.116	10.743	8.654	15.692
Trend	-57,5%	-55,7%	-59,8%	-50,6%
Cumulated Weeks	262.341	540.522	445.450	770.810
Trend	-54,5%	-53,1%	-56,6%	-50,8%

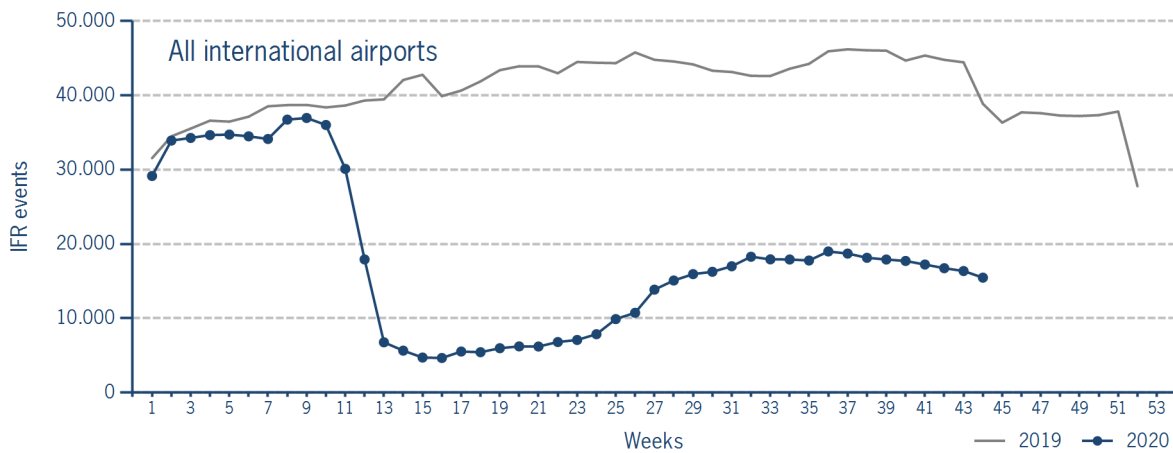
Please note: The trend numbers compare counts of the airspaces in their current configuration to the count of the same airspace in 2019.



IFR flights at international German airports

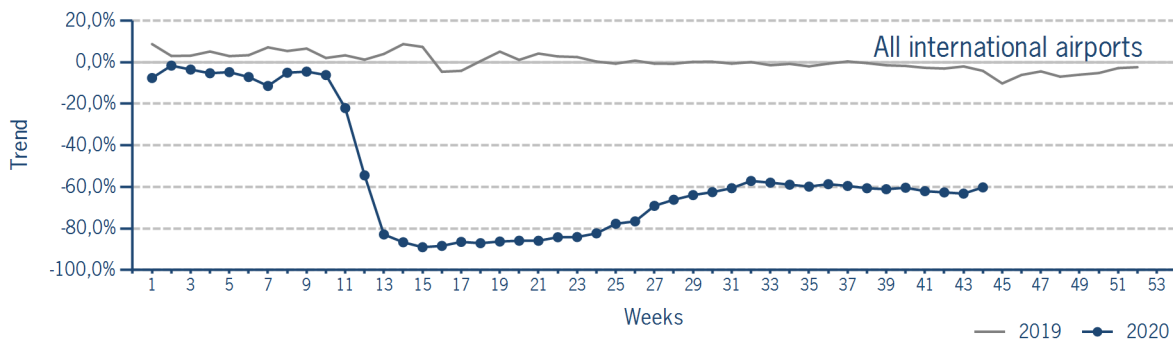
IFR events (take-offs and landings) at the international DFS towers in the Federal Republic of Germany.

	2020	2019	Trend
Week 44	15.469	38.856	-60,2%
Cumulated Weeks	793.929	1.839.179	-56,8%



IFR flights at international German airports - trend

Trend in the number of IFR events (take-offs and landings) at the international DFS towers in the Federal Republic of Germany.



IFR flights at international German airports - airport category

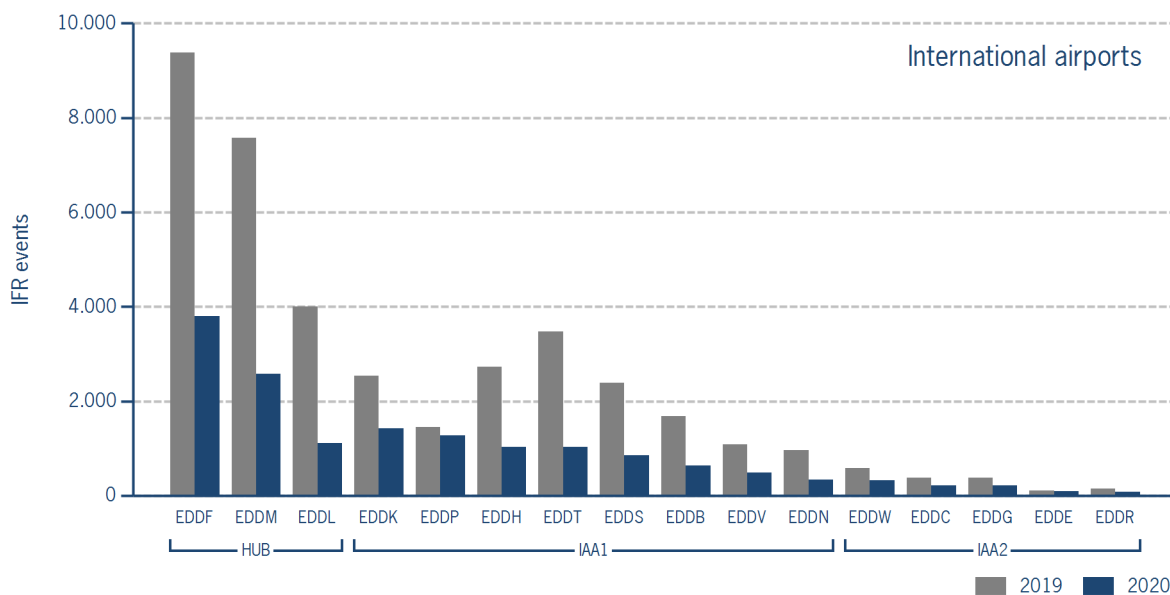
IFR events (take-offs and landings) at the international DFS towers in the Federal Republic of Germany differentiated by Hub Gateways (HUB), International Access Airports 1 (IAA1) and International Access Airports 2 (IAA2).

	HUB	IAA1	IAA2
Week 44	7.494	7.049	926
Trend	-64,2%	-56,7%	-42,4%
Cumulated Weeks	395.431	360.899	37.599
Trend	-60,2%	-53,4%	-46,8%

IFR flights at international German airports - in detail

IFR events (take-offs and landings) at the different international DFS towers in the Federal Republic of Germany.

		Week 44	Trend	Week 1 - 44	Trend
HUB					
EDDF	Frankfurt/Main	3.805	-59,5%	188.191	-57,5%
EDDL	Düsseldorf	1.113	-72,2%	73.303	-62,5%
EDDM	München	2.576	-66,0%	133.937	-62,4%
IAA1					
EDDB	Berlin-Schönefeld	639	-61,9%	35.182	-54,8%
EDDH	Hamburg	1.032	-62,1%	55.010	-57,3%
EDDK	Köln/Bonn	1.426	-43,7%	69.272	-43,6%
EDDN	Nürnberg	332	-65,6%	18.555	-56,5%
EDDP	Leipzig/Halle	1.268	-12,4%	51.645	-19,6%
EDDS	Stuttgart	849	-64,4%	45.755	-60,2%
EDDT	Berlin-Tegel	1.023	-70,6%	60.755	-63,5%
EDDV	Hannover	480	-55,8%	24.725	-56,2%
IAA2					
EDDC	Dresden	216	-43,3%	8.085	-54,3%
EDDE	Erfurt/Weimar	88	-21,4%	3.137	-24,0%
EDDG	Münster/Osnabrück	215	-43,3%	9.368	-42,3%
EDDR	Saarbrücken	81	-46,7%	3.553	-48,8%
EDDW	Bremen	326	-44,3%	13.456	-47,7%



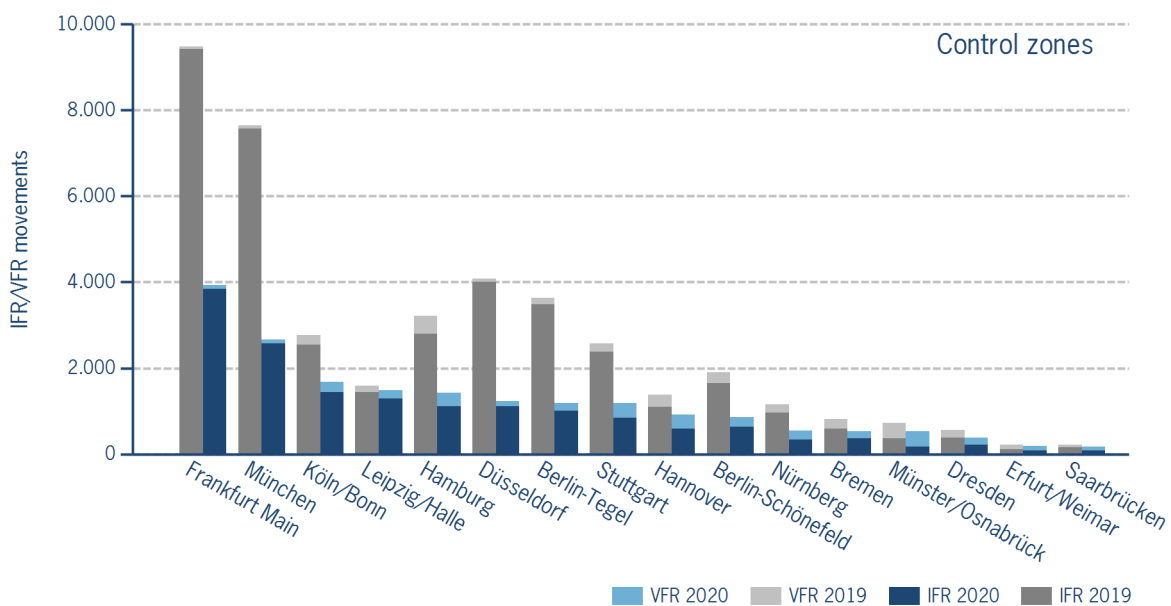
IFR/VFR flights in control zones of DFS towers

IFR/VFR movements (entries, exits, overflights and domestics) at the different control zones of international DFS towers.

	Week 44	Trend	Week 1 - 44	Trend
Berlin-Schönefeld	855	-55,0%	48.555	-47,1%
Berlin-Tegel	1.185	-67,3%	68.734	-60,5%
Bremen	531	-34,6%	23.440	-36,6%
Dresden	381	-32,8%	19.556	-35,7%
Düsseldorf	1.236	-69,8%	80.013	-60,3%
Erfurt/Weimar	192	-14,3%	8.521	-22,9%
Frankfurt Main	3.938	-58,4%	193.455	-56,8%
Hamburg	1.426	-55,7%	77.358	-49,3%
Hannover	914	-33,7%	44.116	-41,1%
Köln/Bonn	1.673	-39,5%	81.504	-40,0%
Leipzig/Halle	1.488	-6,2%	62.464	-17,6%
München	2.663	-65,2%	139.070	-61,5%
Münster/Osnabrück	528	-26,9%	25.219	-22,7%
Nürnberg	549	-52,7%	29.606	-46,6%
Saarbrücken	173	-18,4%	7.209	-34,4%
Stuttgart	1.181	-54,3%	59.020	-54,4%

Additional information:

Münster reported no glider movements for the current week, i.e. 3.154 glider movements for the cumulated year.



IFR flights at regional German airports - in detail

IFR events (take-offs and landings) at the different regional towers in the Federal Republic of Germany with control zone and barely any PPR.

	2020	2019	Trend
Week 44	2.140	2.959	-27,7%
Cumulated Weeks	92.224	140.468	-34,3%

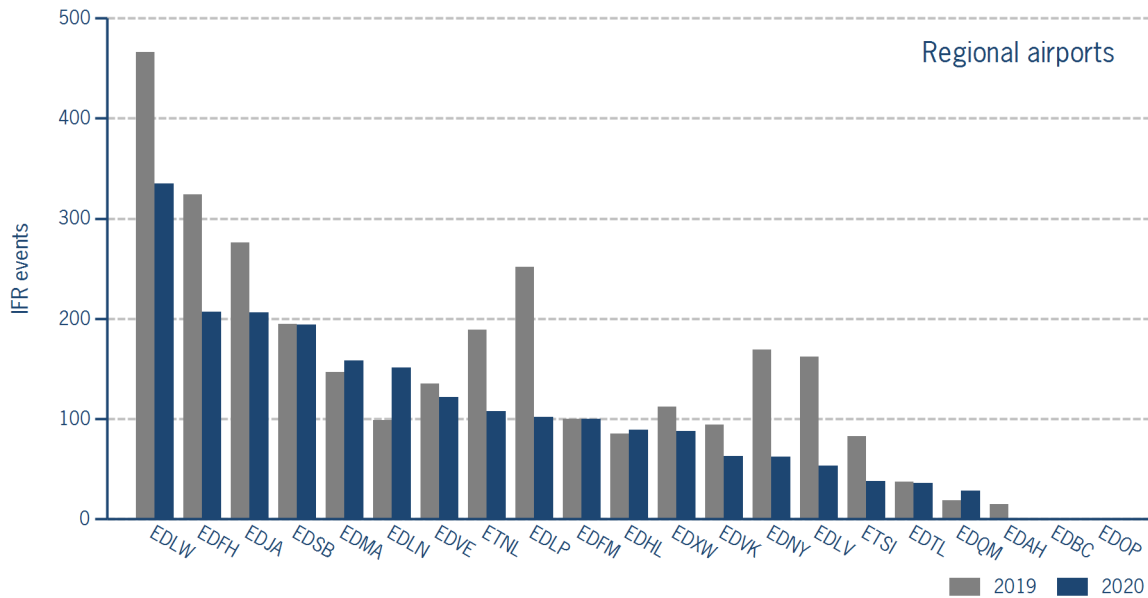
	Week 44	Trend	Week 1 - 44	Trend
EDAH Heringsdorf	0	-100,0%	535	-39,4%
EDBC Magdeburg/Cochstedt	0	N/A	0	-100,0%
EDFH Frankfurt-Hahn	207	-36,1%	9.634	-31,6%
EDFM Mannheim City	100	0,0%	4.044	-29,6%
EDHL Lübeck-Blankensee	89	4,7%	2.059	-13,8%
EDJA Memmingen	206	-25,4%	8.608	-33,9%
EDLN Mönchengladbach	151	52,5%	5.843	6,4%
EDLP Paderborn/Lippstadt	102	-59,5%	4.910	-58,6%
EDLV Niederrhein	53	-67,3%	3.296	-60,7%
EDLW Dortmund	335	-28,1%	14.393	-29,6%
EDMA Augsburg	158	7,5%	5.878	-8,1%
EDNY Friedrichshafen	62	-63,3%	4.007	-57,4%
EDOP Schwerin-Parchim	0	N/A	0	-100,0%
EDQM Hof-Plauen	28	47,4%	1.178	-10,0%
EDSB Karlsruhe/Baden-Baden	194	-0,5%	7.412	-32,1%
EDTL Lahr	36	-2,7%	1.037	-22,4%
EDVE Braunschweig-Wolfsburg	122	-9,6%	4.550	-41,4%
EDVK Kassel-Calden	63	-33,0%	3.321	-20,5%
EDXW Sylt	88	-21,4%	4.751	-12,3%
ETNL Laage	108	-42,9%	4.307	-40,0%
ETSI Ingolstadt/Manching	38	-54,2%	2.461	-42,4%

*The value is of limited conclusiveness (OLC).

Please note: The airport Magdeburg-Cochstedt (EDBC) is currently closed and the airport Sylt (EDXW) is now assigned to Austro Control.

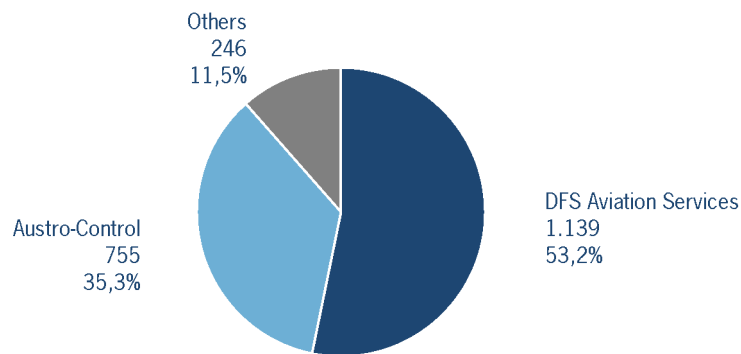
IFR flights at regional German airports - in detail

IFR events (take-offs and landings) at the different regional towers in the Federal Republic of Germany with control zone and barely any PPR.



IFR flights at regional German airports - air traffic service providers

Percentage of IFR events (take-offs and landings) at the regional towers in the Federal Republic of Germany differentiated between DFS Aviation Services, Austro Control and other providers.



- DFS Aviation Services: Dortmund (EDLW), Friedrichshafen (EDNY), Karlsruhe/Baden-Baden (EDSB), Lahr (EDTL), Magdeburg/Cochstedt (EDBC), Memmingen (EDJA), Mönchengladbach (EDLN), Niederrhein (EDLV), Paderborn/Lippstadt (EDLP)
- Austro Control: Augsburg (EDMA), Braunschweig-Wolfsburg (EDVE), Frankfurt-Hahn (EDFH), Heringsdorf (EDAH), Hof-Plauen (EDQM), Kassel-Calden (EDVK), Lübeck-Blankensee (EDHL), Schwerin-Parchim (EDOP), Sylt (EDXW)
- Others: Ingolstadt/Manching (ETSI), Laage (ETNL), Mannheim City (EDFM)

ATFM Arrival Delay

(Data Source: NM statistics, DFS LIZ)

ATFM Arrival Delay with reference to the relevant airport, in minutes per IFR arrival.

ATFM Arrival Delay:

sum of all arrival ATFM delay divided by the sum of all inbound flights for the particular traffic volume

No ATFM Delay

Please note: The ATFM delay data are provided by NM statistics. Due to internal distribution of the ATFM delay, data are modified by CC/FC and TWR/M. The inbound flight information is based on LIZ statistics.

All Airports means all international German airports: Berlin-Schönefeld (EDDB), Berlin-Tegel (EDDT), Bremen (EDDW), Dresden (EDDC), Düsseldorf (EDDL), Erfurt/Weimar (EDDE), Frankfurt/Main (EDDF), Hamburg (EDDH), Hannover (EDDV), Köln/Bonn (EDDK), Leipzig/Halle (EDDP), München (EDDM), Münster/Osnabrück (EDDG), Nürnberg (EDDN), Saarbrücken (EDDR), Stuttgart (EDDS)