



LIZ Bulletin

DFS Situation and Information Centre

Week 43

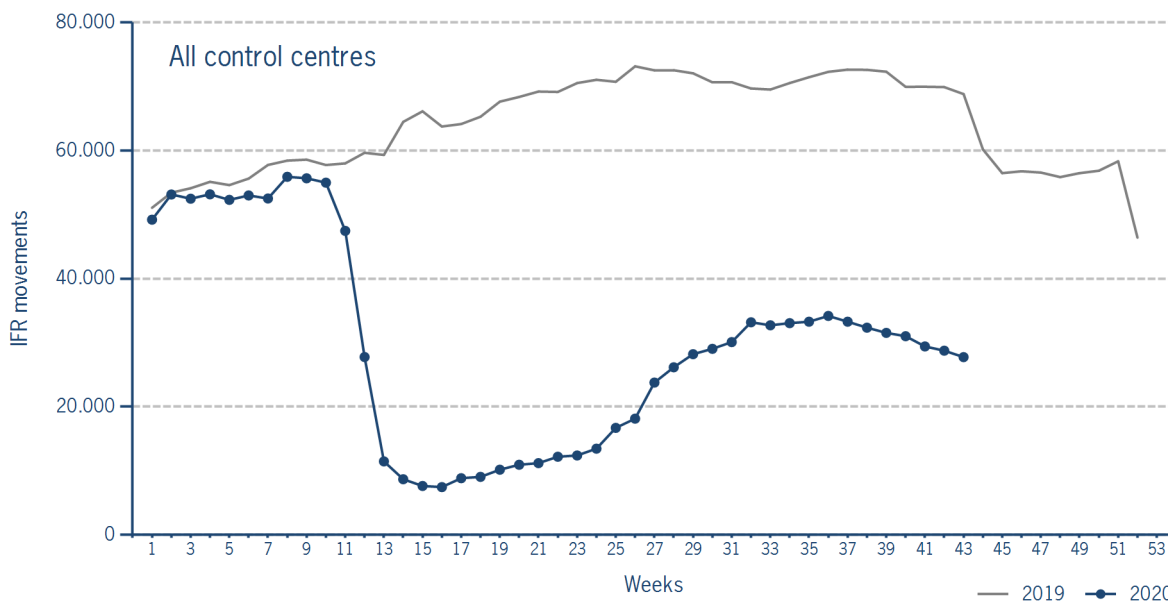
19 OCT 2020 - 25 OCT 2020

Version 27.10.2020

IFR flights in the Federal Republic of Germany

IFR movements (entries, exits, overflights and domestics) in all control sectors with a German designator.

	2020	2019	Trend
Week 43	27.740	68.829	-59,7%
Cumulated Weeks	1.283.354	2.825.555	-54,6%

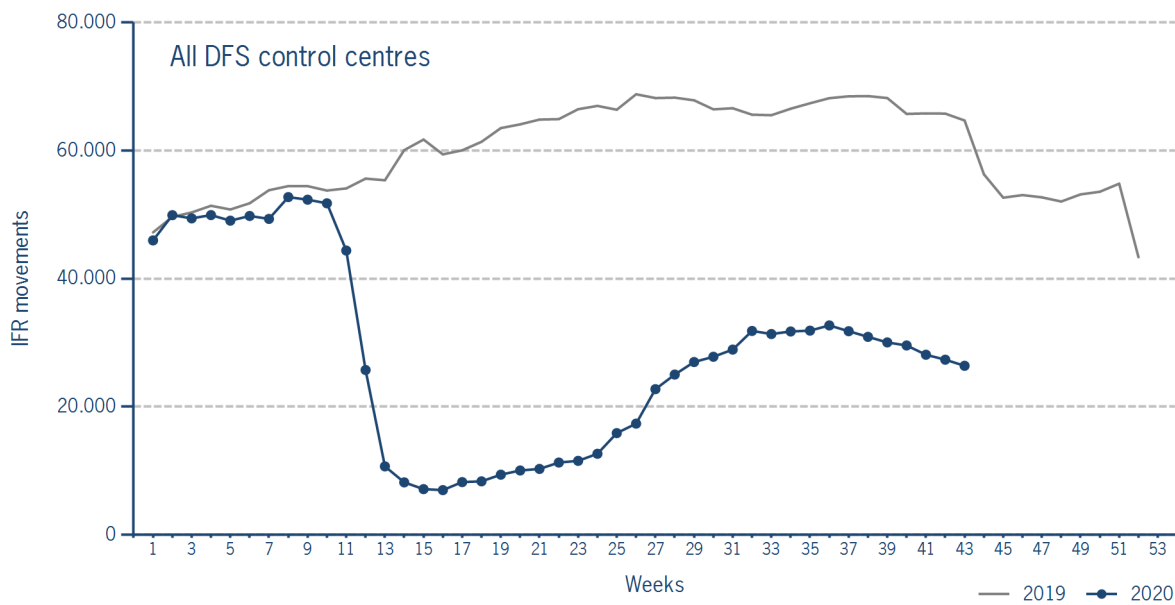


Please note: This count covers the traffic in the area build by all control sectors with a German designator („ED“), regardless of the service provider, including civil and military traffic in sectors controlled by DFS and Maastricht UAC (Maastricht-Hannover sectors). The area counted is composed of modular control sectors designed for ATC purposes with partly cross border structures and is therefore not identical to the political border of the Federal Republic of Germany or the national Flight Information Region (FIR).

IFR flights controlled by DFS

IFR movements (entries, exits, overflights and domestics) in control sectors controlled by DFS.

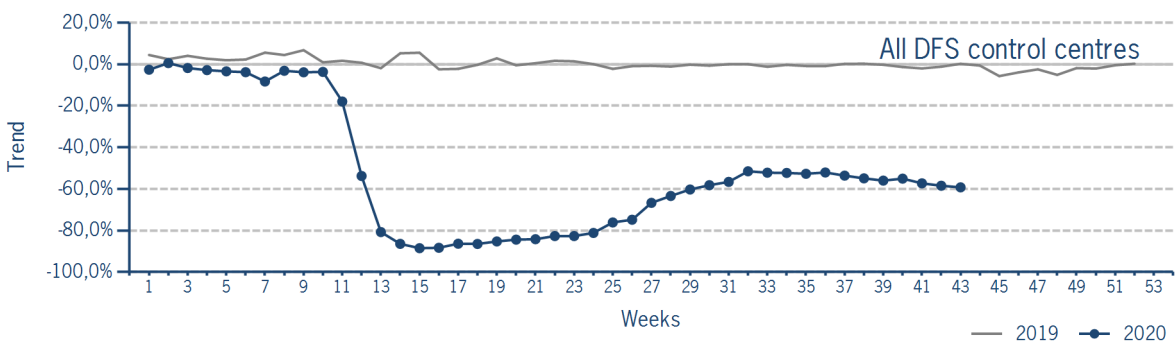
	2020	2019	Trend
Week 43	26.386	64.702	-59,2%
Cumulated Weeks	1.213.259	2.649.256	-54,2%



Please note: This count covers the traffic in the area build by control sectors of DFS control centres, including civil and military traffic. Traffic in Maastricht UAC (Maastricht-Hannover sectors) is not counted.

IFR flights controlled by DFS - trend

Trend in the number of IFR movements (entries, exits, overflights and domestics) in control sectors controlled by DFS.

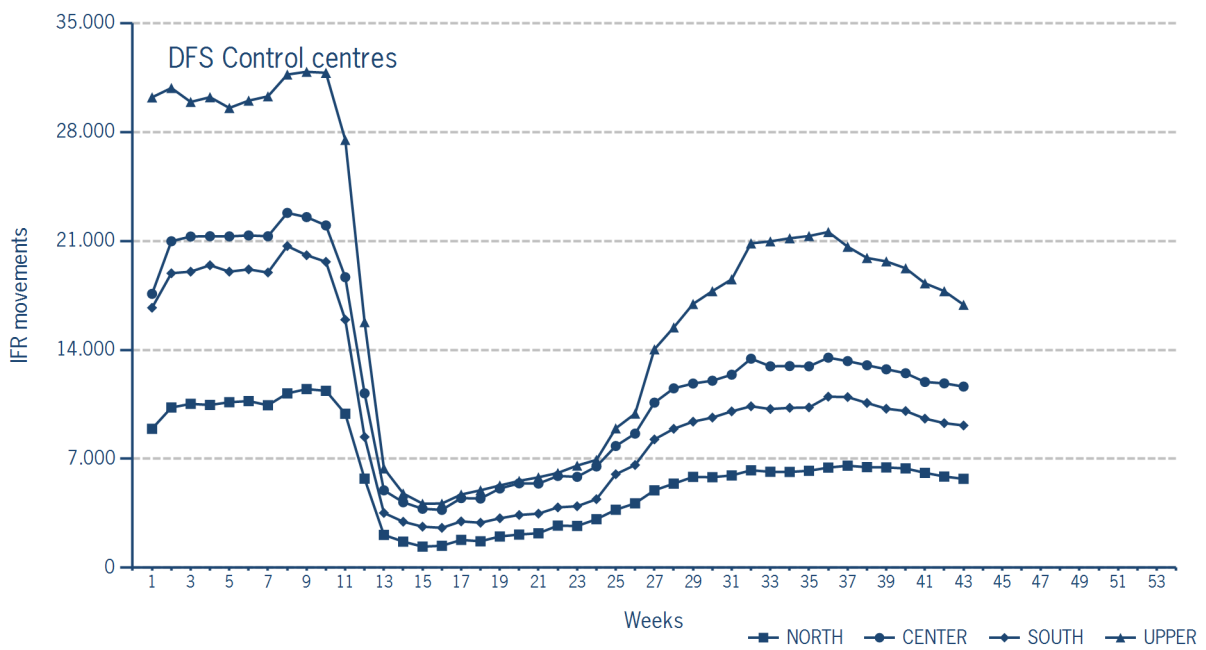


IFR flights controlled by DFS - in detail

IFR movements (entries, exits, overflights and domestics) controlled by DFS at the different control centres.

	NORTH	CENTER	SOUTH	UPPER
Week 43	5.711	11.644	9.143	16.905
Trend	-59,0%	-58,3%	-63,0%	-53,6%
Cumulated Weeks	257.225	529.779	436.796	755.118
Trend	-54,4%	-53,0%	-56,5%	-50,8%

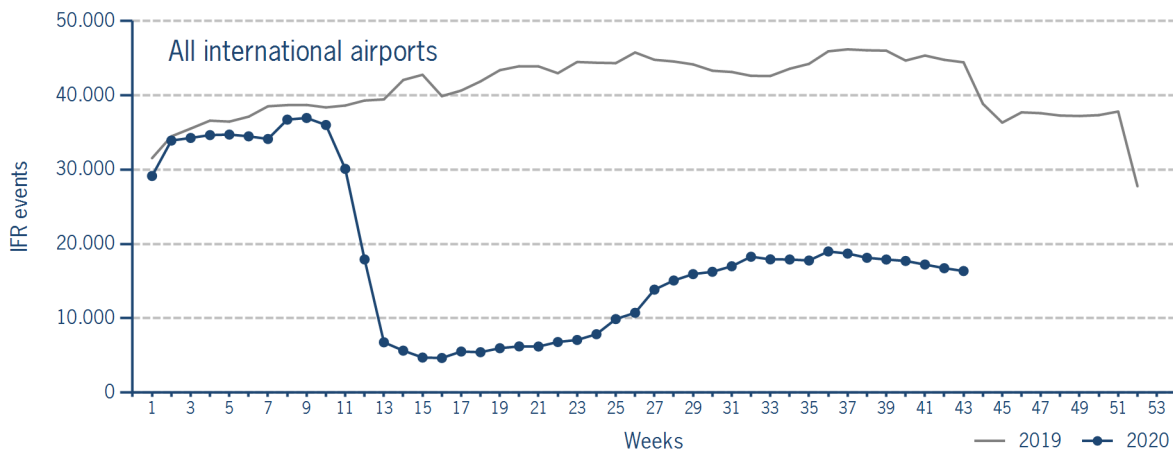
Please note: The trend numbers compare counts of the airspaces in their current configuration to the count of the same airspace in 2019.



IFR flights at international German airports

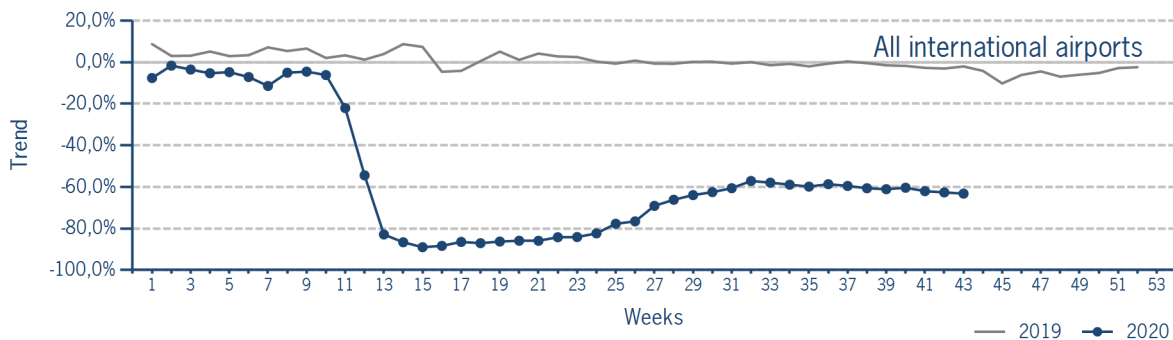
IFR events (take-offs and landings) at the international DFS towers in the Federal Republic of Germany.

	2020	2019	Trend
Week 43	16.363	44.446	-63,2%
Cumulated Weeks	778.460	1.800.323	-56,8%



IFR flights at international German airports - trend

Trend in the number of IFR events (take-offs and landings) at the international DFS towers in the Federal Republic of Germany.



IFR flights at international German airports - airport category

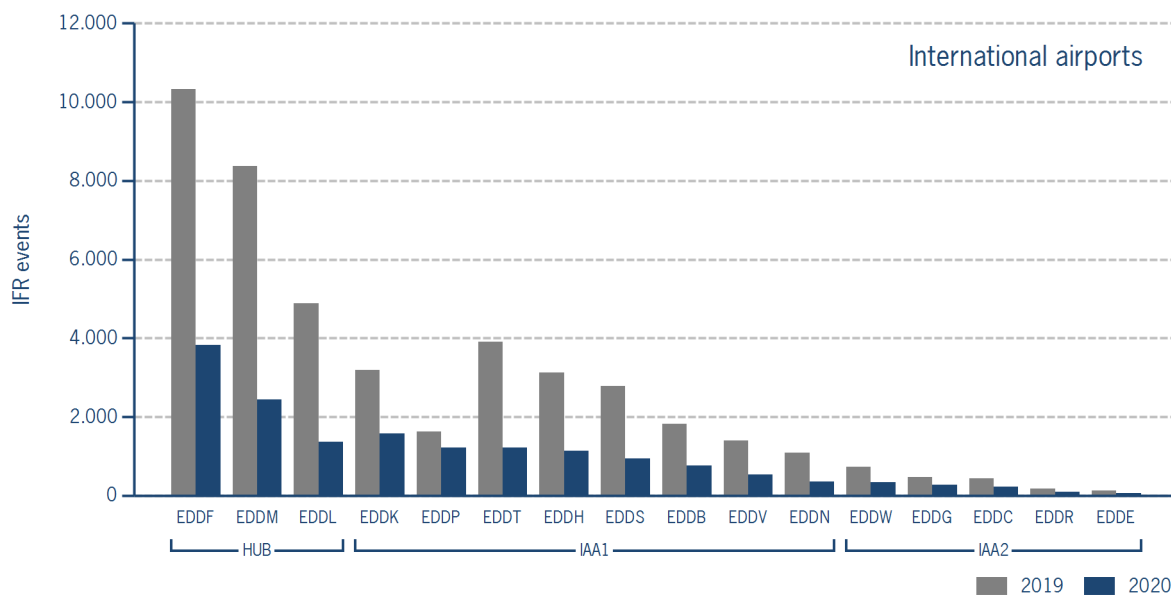
IFR events (take-offs and landings) at the international DFS towers in the Federal Republic of Germany differentiated by Hub Gateways (HUB), International Access Airports 1 (IAA1) and International Access Airports 2 (IAA2).

	HUB	IAA1	IAA2
Week 43	7.618	7.755	990
Trend	-67,7%	-59,0%	-49,0%
Cumulated Weeks	387.937	353.850	36.673
Trend	-60,1%	-53,3%	-46,9%

IFR flights at international German airports - in detail

IFR events (take-offs and landings) at the different international DFS towers in the Federal Republic of Germany.

		Week 43	Trend	Week 1 - 43	Trend
HUB					
EDDF	Frankfurt/Main	3.819	-63,0%	184.386	-57,5%
EDDL	Düsseldorf	1.360	-72,1%	72.190	-62,3%
EDDM	München	2.439	-70,9%	131.361	-62,3%
IAA1					
EDDB	Berlin-Schönefeld	768	-57,7%	34.543	-54,7%
EDDH	Hamburg	1.137	-63,6%	53.978	-57,2%
EDDK	Köln/Bonn	1.579	-50,5%	67.846	-43,6%
EDDN	Nürnberg	353	-67,4%	18.223	-56,3%
EDDP	Leipzig/Halle	1.222	-25,0%	50.377	-19,8%
EDDS	Stuttgart	945	-66,1%	44.906	-60,1%
EDDT	Berlin-Tegel	1.214	-68,9%	59.732	-63,4%
EDDV	Hannover	537	-61,5%	24.245	-56,3%
IAA2					
EDDC	Dresden	219	-50,5%	7.869	-54,5%
EDDE	Erfurt/Weimar	67	-46,8%	3.049	-24,1%
EDDG	Münster/Osnabrück	277	-40,3%	9.153	-42,3%
EDDR	Saarbrücken	90	-50,3%	3.472	-48,9%
EDDW	Bremen	337	-53,8%	13.130	-47,7%



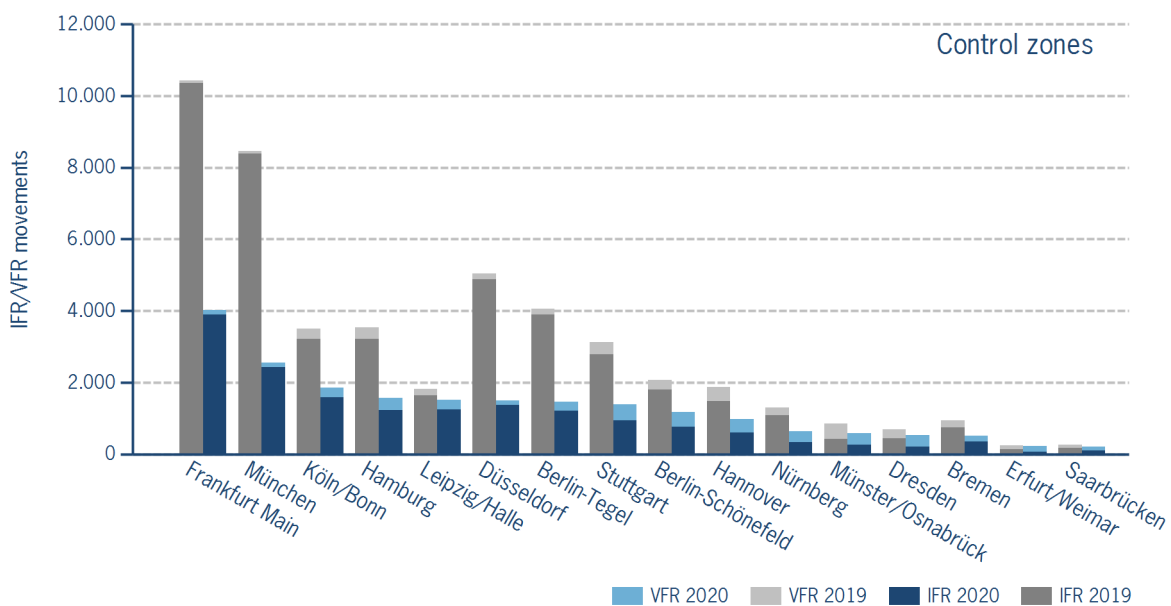
IFR/VFR flights in control zones of DFS towers

IFR/VFR movements (entries, exits, overflights and domestics) at the different control zones of international DFS towers.

	Week 43	Trend	Week 1 - 43	Trend
Berlin-Schönefeld	1.169	-43,5%	47.700	-46,9%
Berlin-Tegel	1.461	-64,0%	67.549	-60,3%
Bremen	518	-45,1%	22.909	-36,6%
Dresden	532	-23,3%	19.175	-35,8%
Düsseldorf	1.504	-70,1%	78.777	-60,1%
Erfurt/Weimar	217	-11,1%	8.329	-23,0%
Frankfurt Main	4.024	-61,4%	189.517	-56,8%
Hamburg	1.559	-55,8%	75.932	-49,2%
Hannover	978	-47,9%	43.202	-41,2%
Köln/Bonn	1.863	-46,9%	79.831	-40,0%
Leipzig/Halle	1.516	-16,5%	60.976	-17,8%
München	2.547	-69,9%	136.407	-61,4%
Münster/Osnabrück	579	-31,7%	24.691	-22,6%
Nürnberg	640	-50,7%	29.057	-46,5%
Saarbrücken	211	-18,8%	7.036	-34,7%
Stuttgart	1.388	-55,7%	57.839	-54,4%

Additional information:

Münster reported no glider movements for the current week, i.e. 3.154 glider movements for the cumulated year.



IFR flights at regional German airports - in detail

IFR events (take-offs and landings) at the different regional towers in the Federal Republic of Germany with control zone and barely any PPR.

	2020	2019	Trend
Week 43	2.464	3.581	-31,2%
Cumulated Weeks	90.084	137.509	-34,5%

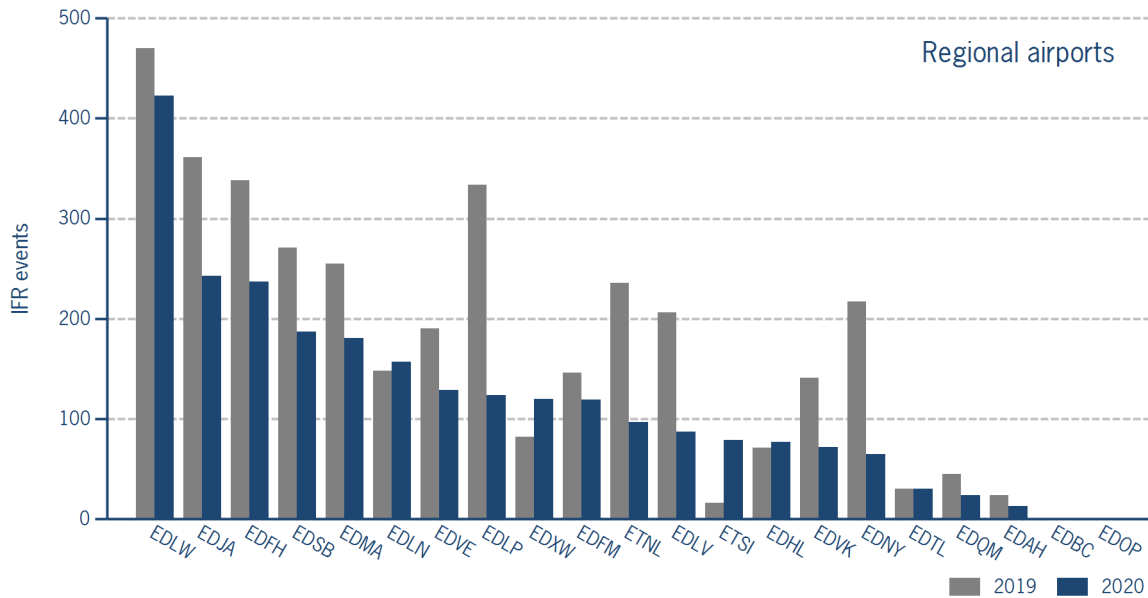
	Week 43	Trend	Week 1 - 43	Trend
EDAH Heringsdorf	13	-45,8%	535	-38,4%
EDBC Magdeburg/Cochstedt	0	N/A	0	-100,0%
EDFH Frankfurt-Hahn	237	-29,9%	9.427	-31,5%
EDFM Mannheim City	119	-18,5%	3.944	-30,1%
EDHL Lübeck-Blankensee	77	8,5%	1.970	-14,5%
EDJA Memmingen	243	-32,7%	8.402	-34,1%
EDLN Mönchengladbach	157	6,1%	5.692	5,6%
EDLP Paderborn/Lippstadt	124	-62,9%	4.808	-58,5%
EDLV Niederrhein	87	-57,8%	3.243	-60,5%
EDLW Dortmund	423	-10,0%	14.058	-29,6%
EDMA Augsburg	181	-29,0%	5.720	-8,5%
EDNY Friedrichshafen	65	-70,0%	3.945	-57,3%
EDOP Schwerin-Parchim	0	N/A	0	-100,0%
EDQM Hof-Plauen	24	-46,7%	1.150	-10,9%
EDSB Karlsruhe/Baden-Baden	187	-31,0%	7.218	-32,7%
EDTL Lahr	30	0,0%	1.001	-22,9%
EDVE Braunschweig-Wolfsburg	129	-32,1%	4.428	-41,9%
EDVK Kassel-Calden	72	-48,9%	3.258	-20,2%
EDXW Sylt	120	46,3%	4.663	-12,1%
ETNL Laage	97	-58,9%	4.199	-39,9%
ETSI Ingolstadt/Manching	79	OLC*	2.423	-42,1%

*The value is of limited conclusiveness (OLC).

Please note: The airport Magdeburg-Cochstedt (EDBC) is currently closed and the airport Sylt (EDXW) is now assigned to Austro Control.

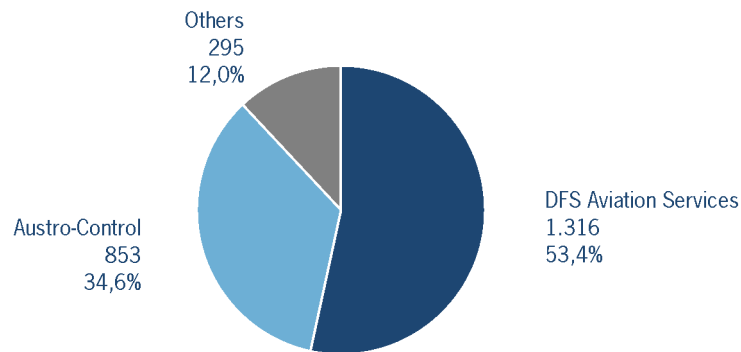
IFR flights at regional German airports - in detail

IFR events (take-offs and landings) at the different regional towers in the Federal Republic of Germany with control zone and barely any PPR.



IFR flights at regional German airports - air traffic service providers

Percentage of IFR events (take-offs and landings) at the regional towers in the Federal Republic of Germany differentiated between DFS Aviation Services, Austro Control and other providers.



- DFS Aviation Services: Dortmund (EDLW), Friedrichshafen (EDNY), Karlsruhe/Baden-Baden (EDSB), Lahr (EDTL), Magdeburg/Cochstedt (EDBC), Memmingen (EDJA), Mönchengladbach (EDLN), Niederrhein (EDLV), Paderborn/Lippstadt (EDLP)
- Austro Control: Augsburg (EDMA), Braunschweig-Wolfsburg (EDVE), Frankfurt-Hahn (EDFH), Heringsdorf (EDAH), Hof-Plauen (EDQM), Kassel-Calden (EDVK), Lübeck-Blankensee (EDHL), Schwerin-Parchim (EDOP), Sylt (EDXW)
- Others: Ingolstadt/Manching (ETSI), Laage (ETNL), Mannheim City (EDFM)

ATFM Arrival Delay

(Data Source: NM statistics, DFS LIZ)

ATFM Arrival Delay with reference to the relevant airport, in minutes per IFR arrival.

ATFM Arrival Delay:

sum of all arrival ATFM delay divided by the sum of all inbound flights for the particular traffic volume

No ATFM Delay

Please note: The ATFM delay data are provided by NM statistics. Due to internal distribution of the ATFM delay, data are modified by CC/FC and TWR/M. The inbound flight information is based on LIZ statistics.

All Airports means all international German airports: Berlin-Schönefeld (EDDB), Berlin-Tegel (EDDT), Bremen (EDDW), Dresden (EDDC), Düsseldorf (EDDL), Erfurt/Weimar (EDDE), Frankfurt/Main (EDDF), Hamburg (EDDH), Hannover (EDDV), Köln/Bonn (EDDK), Leipzig/Halle (EDDP), München (EDDM), Münster/Osnabrück (EDDG), Nürnberg (EDDN), Saarbrücken (EDDR), Stuttgart (EDDS)