



LIZ Bulletin

DFS Situation and Information Centre

Week 25

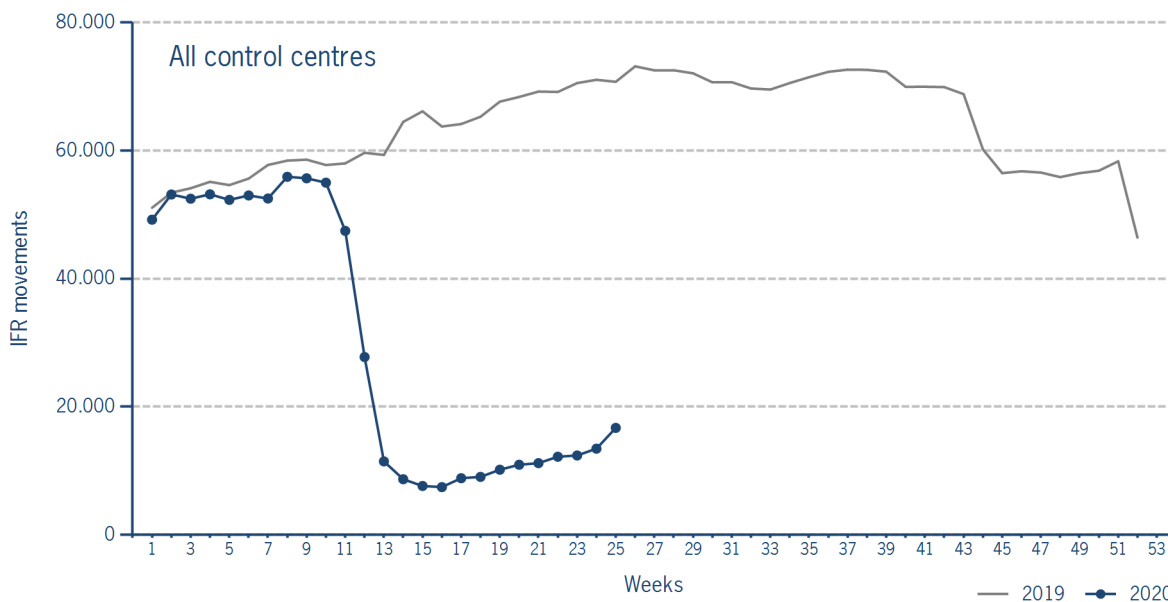
15 JUN 2020 - 21 JUN 2020

Version 13.07.2020

IFR flights in the Federal Republic of Germany

IFR movements (entries, exits, overflights and domestics) in all control sectors with a German designator.

	2020	2019	Trend
Week 25	16.686	70.747	-76,4%
Cumulated Weeks	747.575	1.544.057	-51,6%

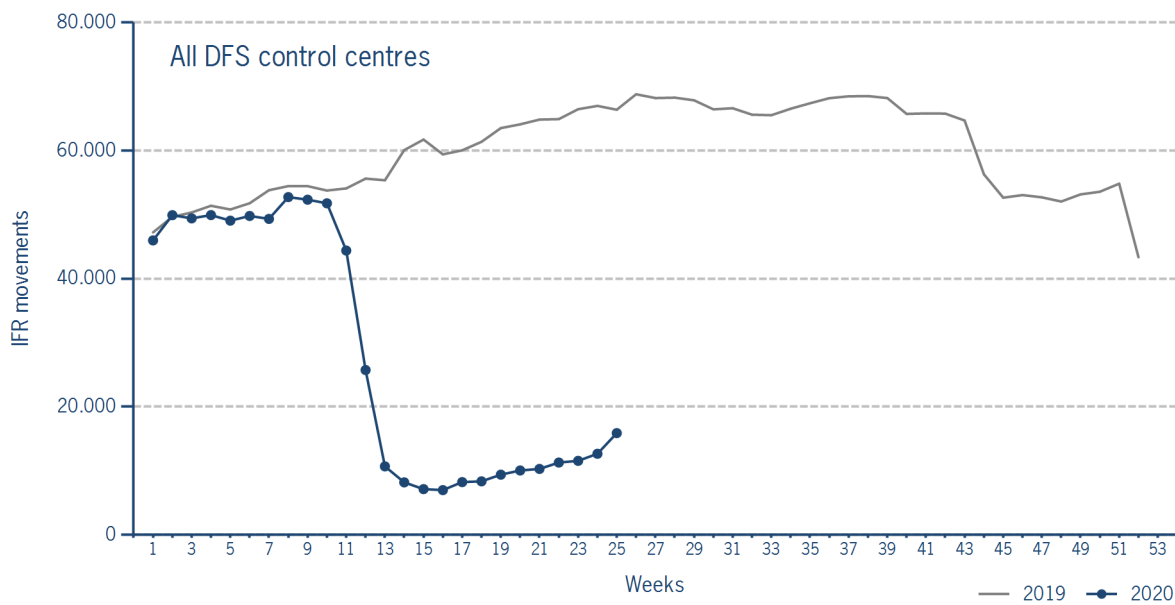


Please note: This count covers the traffic in the area build by all control sectors with a German designator („ED“), regardless of the service provider, including civil and military traffic in sectors controlled by DFS and Maastricht UAC (Maastricht-Hannover sectors). The area counted is composed of modular control sectors designed for ATC purposes with partly cross border structures and is therefore not identical to the political border of the Federal Republic of Germany or the national Flight Information Region (FIR).

IFR flights controlled by DFS

IFR movements (entries, exits, overflights and domestics) in control sectors controlled by DFS.

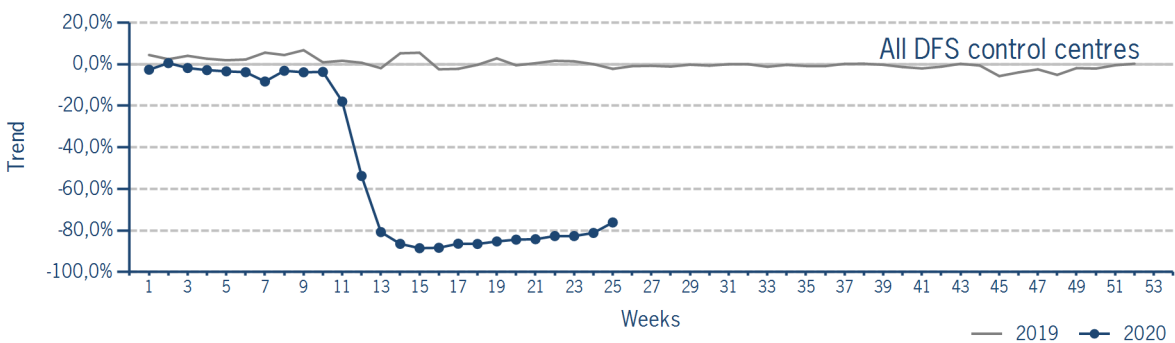
	2020	2019	Trend
Week 25	15.868	66.384	-76,1%
Cumulated Weeks	700.844	1.442.562	-51,4%



Please note: This count covers the traffic in the area build by control sectors of DFS control centres, including civil and military traffic. Traffic in Maastricht UAC (Maastricht-Hannover sectors) is not counted.

IFR flights controlled by DFS - trend

Trend in the number of IFR movements (entries, exits, overflights and domestics) in control sectors controlled by DFS.

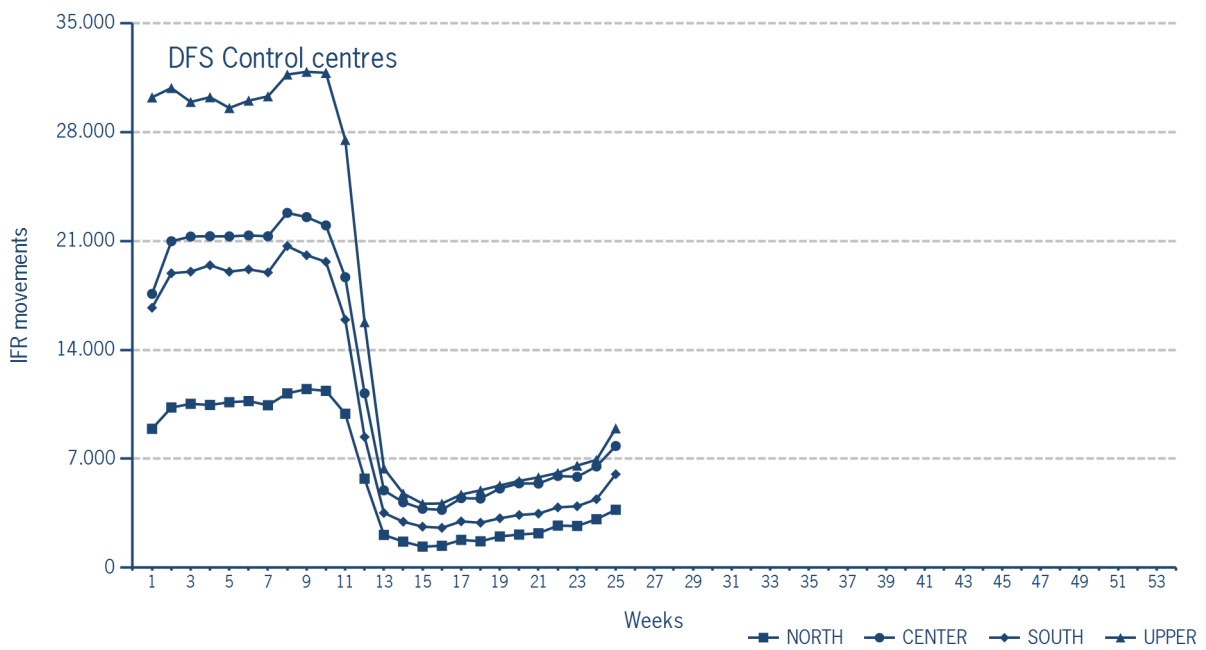


IFR flights controlled by DFS - in detail

IFR movements (entries, exits, overflights and domestics) controlled by DFS at the different control centres.

	NORTH	CENTER	SOUTH	UPPER
Week 25	3.728	7.824	6.011	8.961
Trend	-73,5%	-72,2%	-75,7%	-76,2%
Cumulated Weeks	150.337	309.978	261.904	424.113
Trend	-52,2%	-50,0%	-52,3%	-50,0%

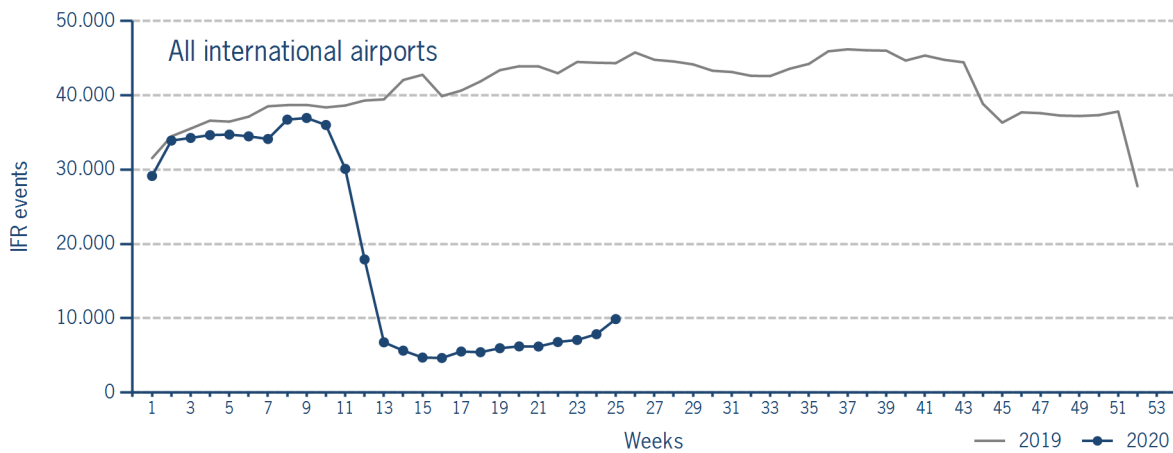
Please note: The trend numbers compare counts of the airspaces in their current configuration to the count of the same airspace in 2019.



IFR flights at international German airports

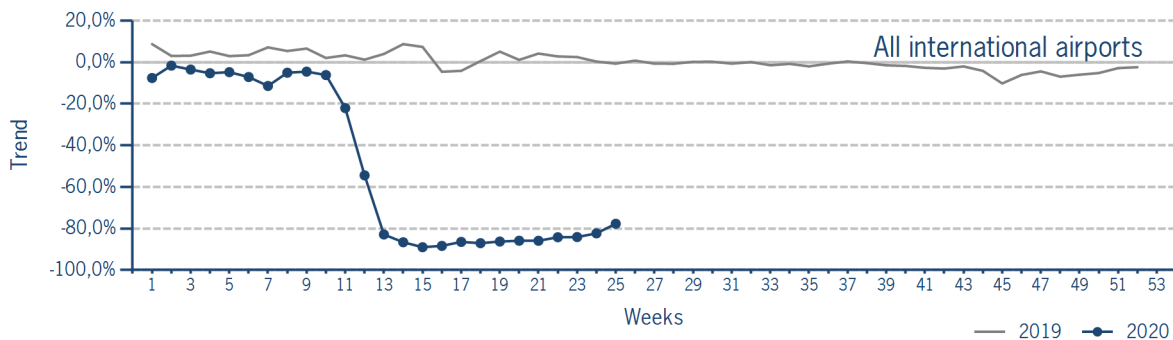
IFR events (take-offs and landings) at the international DFS towers in the Federal Republic of Germany.

	2020	2019	Trend
Week 25	9.893	44.333	-77,7%
Cumulated Weeks	475.862	998.081	-52,3%



IFR flights at international German airports - trend

Trend in the number of IFR events (take-offs and landings) at the international DFS towers in the Federal Republic of Germany.



IFR flights at international German airports - airport category

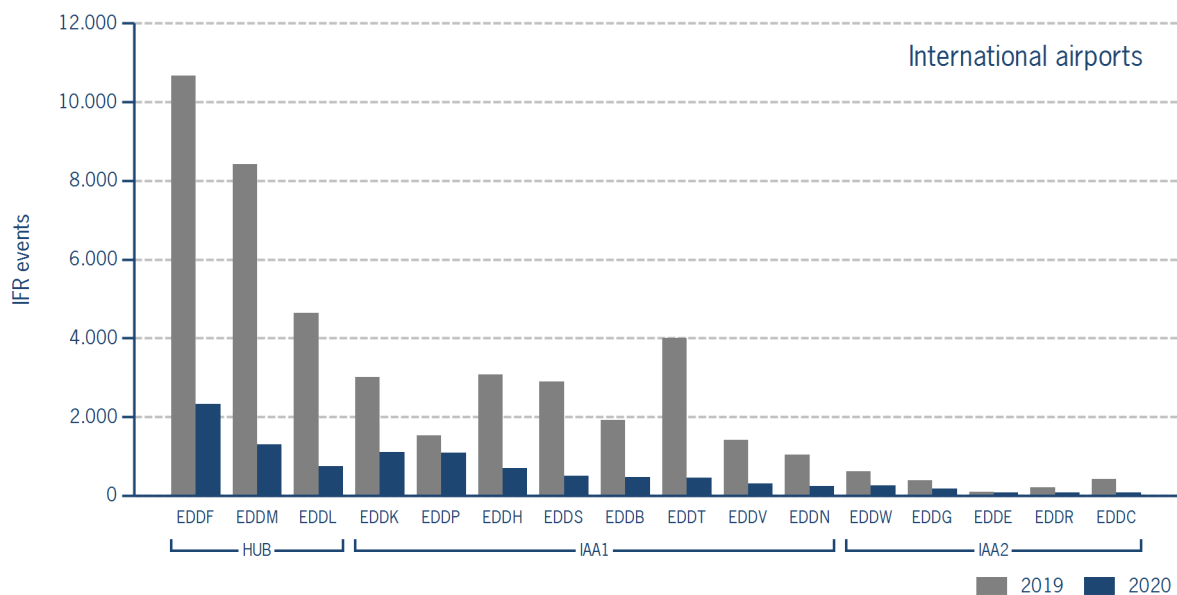
IFR events (take-offs and landings) at the international DFS towers in the Federal Republic of Germany differentiated by Hub Gateways (HUB), International Access Airports 1 (IAA1) and International Access Airports 2 (IAA2).

	HUB	IAA1	IAA2
Week 25	4.379	4.858	656
Trend	-81,5%	-74,3%	-61,9%
Cumulated Weeks	247.751	208.020	20.091
Trend	-54,4%	-50,3%	-45,5%

IFR flights at international German airports - in detail

IFR events (take-offs and landings) at the different international DFS towers in the Federal Republic of Germany.

		Week 25	Trend	Week 1 - 25	Trend
HUB					
EDDF	Frankfurt/Main	2.332	-78,1%	117.454	-51,5%
EDDL	Düsseldorf	748	-83,9%	44.862	-57,5%
EDDM	München	1.299	-84,6%	85.435	-56,2%
IAA1					
EDDB	Berlin-Schönefeld	472	-75,5%	20.078	-54,2%
EDDH	Hamburg	690	-77,6%	31.448	-55,2%
EDDK	Köln/Bonn	1.101	-63,4%	38.275	-40,0%
EDDN	Nürnberg	240	-76,9%	11.034	-50,3%
EDDP	Leipzig/Halle	1.092	-28,5%	29.121	-17,5%
EDDS	Stuttgart	496	-82,9%	26.069	-57,3%
EDDT	Berlin-Tegel	454	-88,7%	38.300	-58,8%
EDDV	Hannover	313	-78,0%	13.695	-52,8%
IAA2					
EDDC	Dresden	73	-82,4%	4.541	-52,0%
EDDE	Erfurt/Weimar	85	-15,8%	1.519	-27,4%
EDDG	Münster/Osnabrück	171	-55,5%	4.863	-41,3%
EDDR	Saarbrücken	75	-62,9%	1.769	-48,4%
EDDW	Bremen	252	-59,4%	7.399	-45,7%



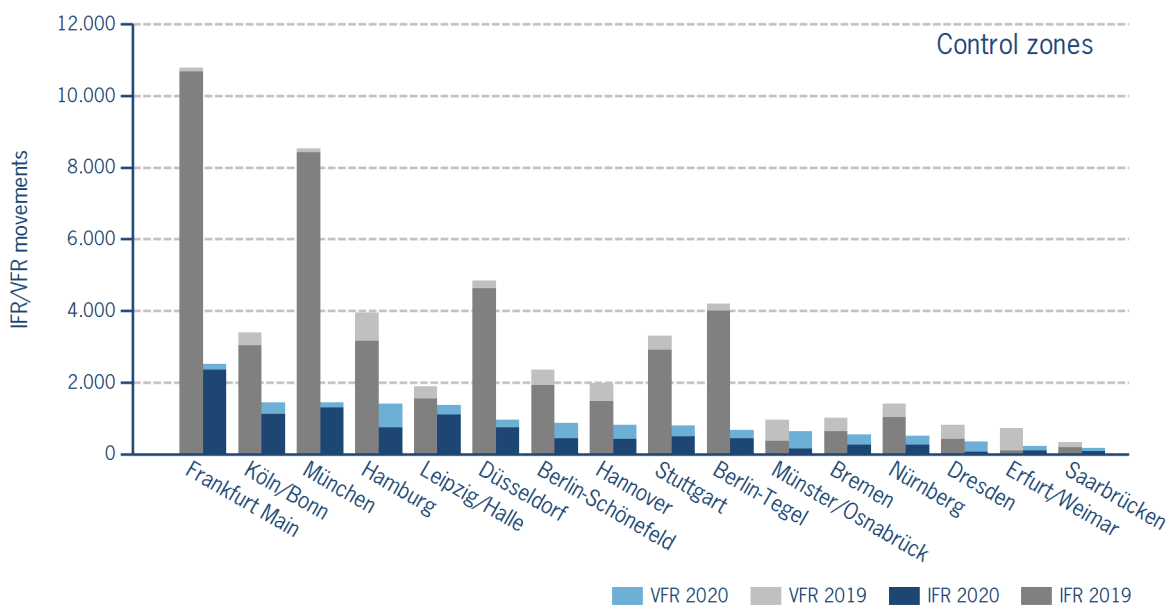
IFR/VFR flights in control zones of DFS towers

IFR/VFR movements (entries, exits, overflights and domestics) at the different control zones of international DFS towers.

	Week 25	Trend	Week 1 - 25	Trend
Berlin-Schönefeld	864	-63,3%	26.473	-48,1%
Berlin-Tegel	665	-84,2%	42.297	-56,3%
Bremen	555	-45,4%	12.070	-38,4%
Dresden	355	-56,4%	9.143	-42,4%
Düsseldorf	966	-80,1%	48.381	-55,5%
Erfurt/Weimar	218	-69,9%	3.857	-33,5%
Frankfurt Main	2.508	-76,8%	119.958	-51,0%
Hamburg	1.414	-64,2%	41.665	-49,4%
Hannover	824	-58,2%	22.579	-41,8%
Köln/Bonn	1.450	-57,3%	44.202	-37,4%
Leipzig/Halle	1.372	-27,3%	34.420	-17,8%
München	1.438	-83,1%	88.178	-55,5%
Münster/Osnabrück	639	-33,3%	11.998	-28,4%
Nürnberg	503	-64,2%	15.704	-45,7%
Saarbrücken	171	-47,2%	3.271	-40,5%
Stuttgart	796	-75,8%	31.705	-53,5%

Additional information:

Münster reported 196 glider movements for the current week, i.e. 1.304 glider movements for the cumulated year.



IFR flights at regional German airports - in detail

IFR events (take-offs and landings) at the different regional towers in the Federal Republic of Germany with control zone and barely any PPR.

	2020	2019	Trend
Week 25	2.028	3.367	-39,8%
Cumulated Weeks	43.697	76.418	-42,8%

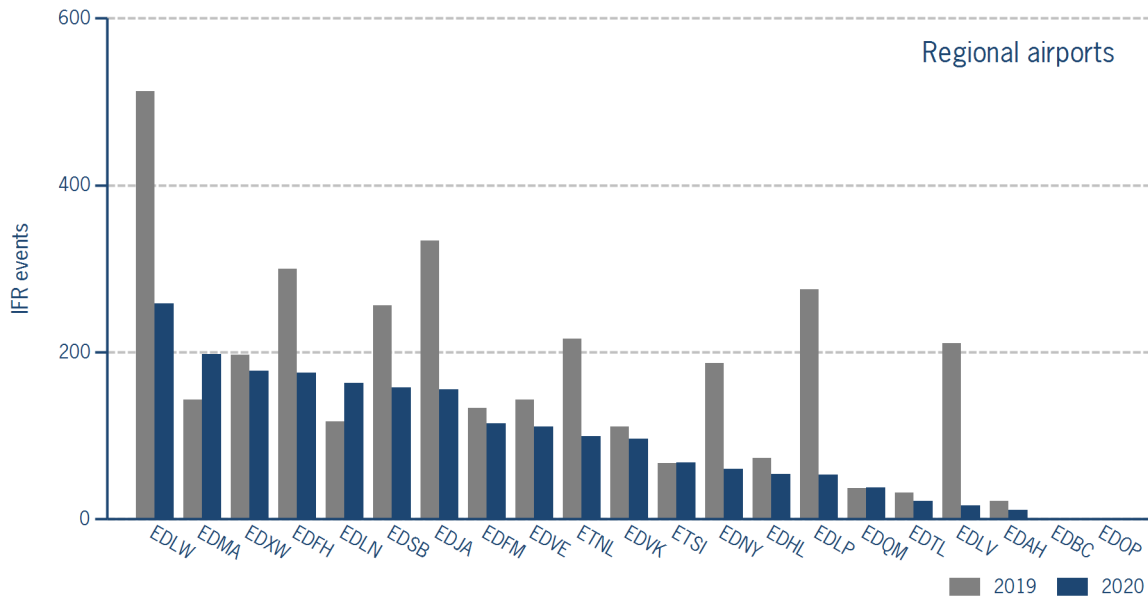
	Week 25	Trend	Week 1 - 25	Trend
EDAH Heringsdorf	11	-50,0%	265	-29,9%
EDBC Magdeburg/Cochstedt	0	N/A	0	-100,0%
EDFH Frankfurt-Hahn	175	-41,7%	5.052	-36,5%
EDFM Mannheim City	115	-13,5%	1.993	-38,7%
EDHL Lübeck-Blankensee	54	-26,0%	763	-44,9%
EDJA Memmingen	155	-53,6%	3.723	-49,0%
EDLN Mönchengladbach	163	39,3%	2.582	-13,7%
EDLP Paderborn/Lippstadt	53	-80,7%	2.385	-61,0%
EDLV Niederrhein	16	-92,4%	1.325	-69,7%
EDLW Dortmund	258	-49,7%	6.231	-43,7%
EDMA Augsburg	198	38,5%	2.563	-22,6%
EDNY Friedrichshafen	60	-67,9%	2.388	-54,6%
EDOP Schwerin-Parchim	0	N/A	0	-100,0%
EDQM Hof-Plauen	38	2,7%	547	-24,1%
EDSB Karlsruhe/Baden-Baden	158	-38,3%	3.485	-37,0%
EDTL Lahr	22	-31,3%	437	-40,1%
EDVE Braunschweig-Wolfsburg	111	-22,4%	2.535	-44,0%
EDVK Kassel-Calden	96	-13,5%	1.605	-22,5%
EDXW Sylt	178	-9,6%	1.623	-35,2%
ETNL Laage	99	-54,2%	2.731	-34,7%
ETSI Ingolstadt/Manching	68	1,5%	1.464	-46,4%

*The value is of limited conclusiveness (OLC).

Please note: The airport Magdeburg-Cochstedt (EDBC) is currently closed and the airport Sylt (EDXW) is now assigned to Austro Control.

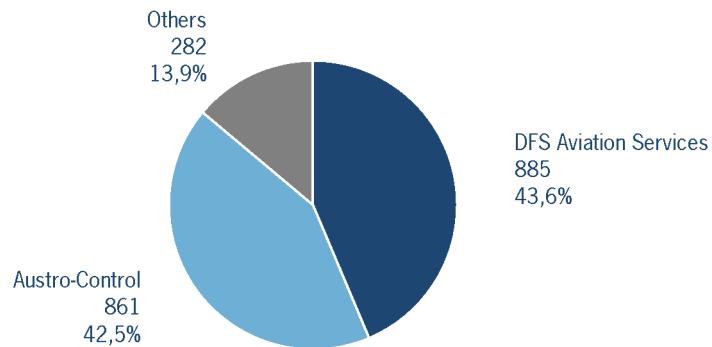
IFR flights at regional German airports - in detail

IFR events (take-offs and landings) at the different regional towers in the Federal Republic of Germany with control zone and barely any PPR.



IFR flights at regional German airports - air traffic service providers

Percentage of IFR events (take-offs and landings) at the regional towers in the Federal Republic of Germany differentiated between DFS Aviation Services, Austro Control and other providers.



- DFS Aviation Services: Dortmund (EDLW), Friedrichshafen (EDNY), Karlsruhe/Baden-Baden (EDSB), Lahr (EDTL), Magdeburg/Cochstedt (EDBC), Memmingen (EDJA), Mönchengladbach (EDLN), Niederrhein (EDLV), Paderborn/Lippstadt (EDLP)
- Austro Control: Augsburg (EDMA), Braunschweig-Wolfsburg (EDVE), Frankfurt-Hahn (EDFH), Heringsdorf (EDAH), Hof-Plauen (EDQM), Kassel-Calden (EDVK), Lübeck-Blankensee (EDHL), Schwerin-Parchim (EDOP), Sylt (EDXW)
- Others: Ingolstadt/Manching (ETSI), Laage (ETNL), Mannheim City (EDFM)

ATFM Arrival Delay

(Data Source: NM statistics, DFS LIZ)

ATFM Arrival Delay with reference to the relevant airport, in minutes per IFR arrival.

ATFM Arrival Delay:

sum of all arrival ATFM delay divided by the sum of all inbound flights for the particular traffic volume

Airports		ATC Delay [min/arrival]	non ATC Delay [min/arrival]
	All Airports	0	0,0129
EDDW	Bremen	0	0,4923

Please note: The ATFM delay data are provided by NM statistics. Due to internal distribution of the ATFM delay, data are modified by CC/FC and TWR/M. The inbound flight information is based on LIZ statistics.

All Airports means all international German airports: Berlin-Schönefeld (EDDB), Berlin-Tegel (EDDT), Bremen (EDDW), Dresden (EDDC), Düsseldorf (EDDL), Erfurt/Weimar (EDDE), Frankfurt/Main (EDDF), Hamburg (EDDH), Hannover (EDDV), Köln/Bonn (EDDK), Leipzig/Halle (EDDP), München (EDDM), Münster/Osnabrück (EDDG), Nürnberg (EDDN), Saarbrücken (EDDR), Stuttgart (EDDS)