



# LIZ Bulletin

DFS Situation and Information Centre

**Week 14**

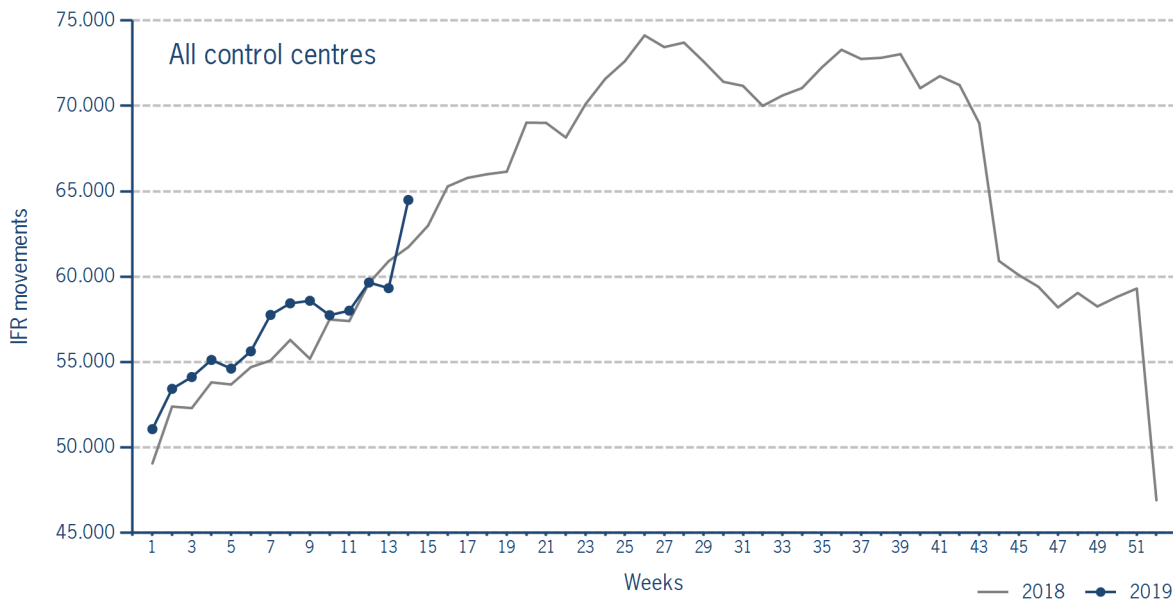
1 APR 2019 - 7 APR 2019

Version 11.04.2019

## IFR flights in the Federal Republic of Germany

IFR movements (entries, exits, overflights and domestics) in all control sectors with a German designator.

	2019	2018	Trend
<b>Week 14</b>	64.490	61.730	4,5%
<b>Cumulated Weeks</b>	797.963	779.641	2,4%

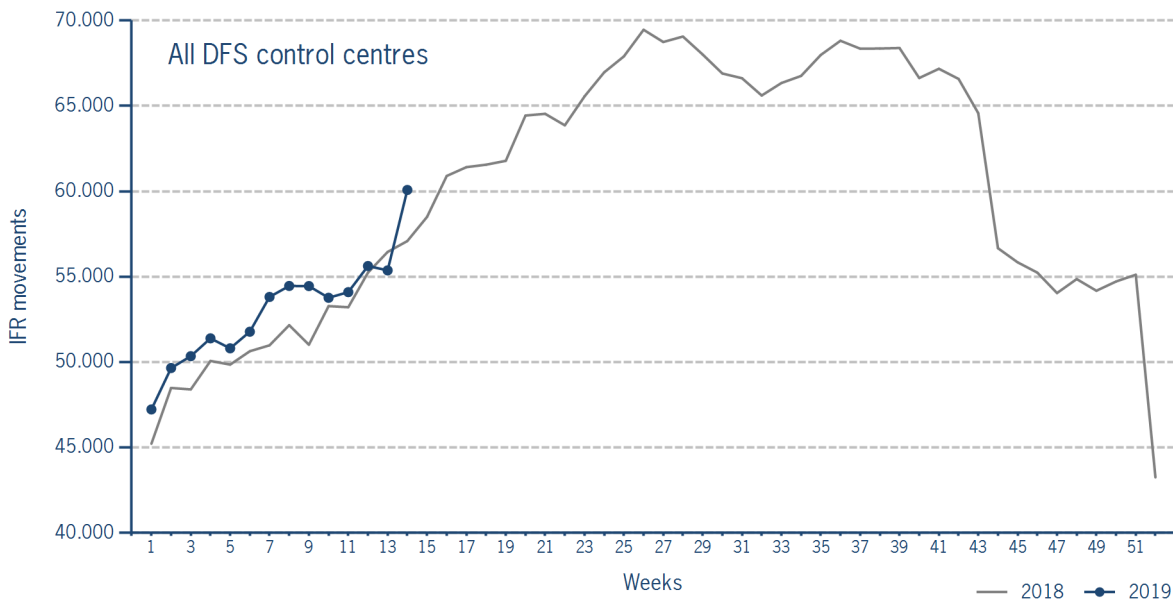


Please note: This count covers the traffic in the area build by all control sectors with a German designator („ED“), regardless of the service provider, including civil and military traffic in sectors controlled by DFS and Maastricht UAC (Maastricht-Hannover sectors). The area counted is composed of modular control sectors designed for ATC purposes with partly cross border structures and is therefore not identical to the political border of the Federal Republic of Germany or the national Flight Information Region (FIR).

## IFR flights controlled by DFS

IFR movements (entries, exits, overflights and domestics) in control sectors controlled by DFS.

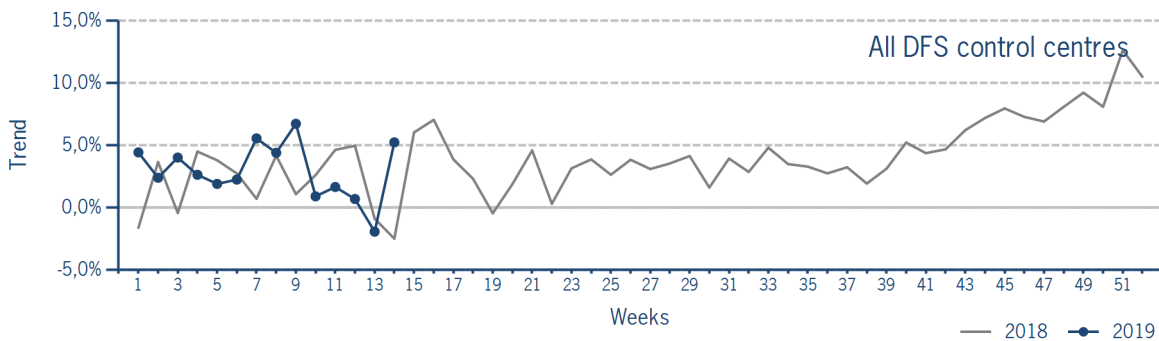
	2019	2018	Trend
<b>Week 14</b>	60.078	57.085	5,2%
<b>Cumulated Weeks</b>	742.796	722.013	2,9%



Please note: This count covers the traffic in the area build by control sectors of DFS control centres, including civil and military traffic. Traffic in Maastricht UAC (Maastricht-Hannover sectors) is not counted.

## IFR flights controlled by DFS - trend

Trend in the number of IFR movements (entries, exits, overflights and domestics) in control sectors controlled by DFS.

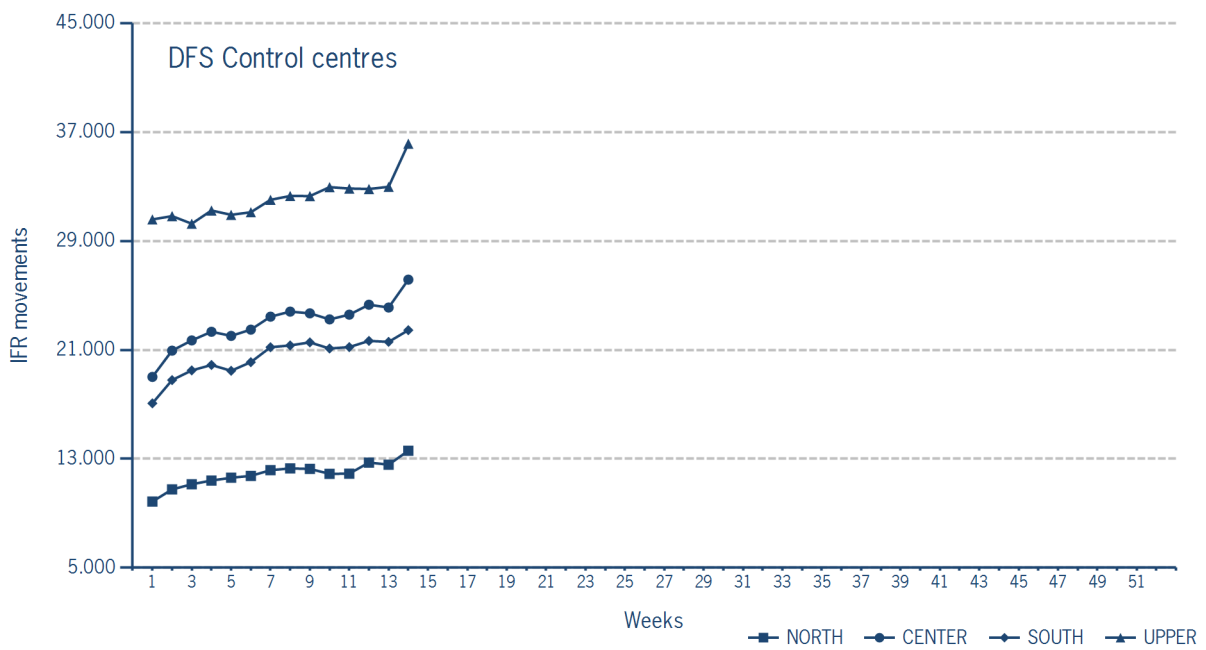


### IFR flights controlled by DFS - in detail

IFR movements (entries, exits, overflights and domestics) controlled by DFS at the different control centres.

	NORTH	CENTER	SOUTH	UPPER
<b>Week 14</b>	13.594	26.162	22.450	36.147
<b>Trend</b>	12,9%	6,3%	5,7%	2,1%
<b>Cumulated Weeks</b>	165.932	320.883	286.906	449.347
<b>Trend</b>	6,3%	2,4%	3,4%	1,4%

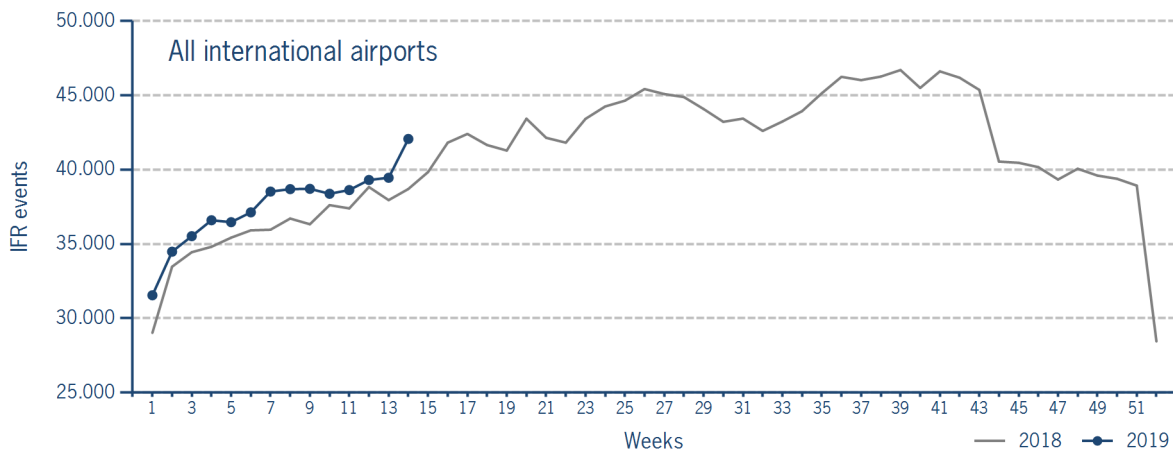
Please note: The trend numbers compare counts of the airspaces in their current configuration to the count of the same airspace in 2018.



### IFR flights at international German airports

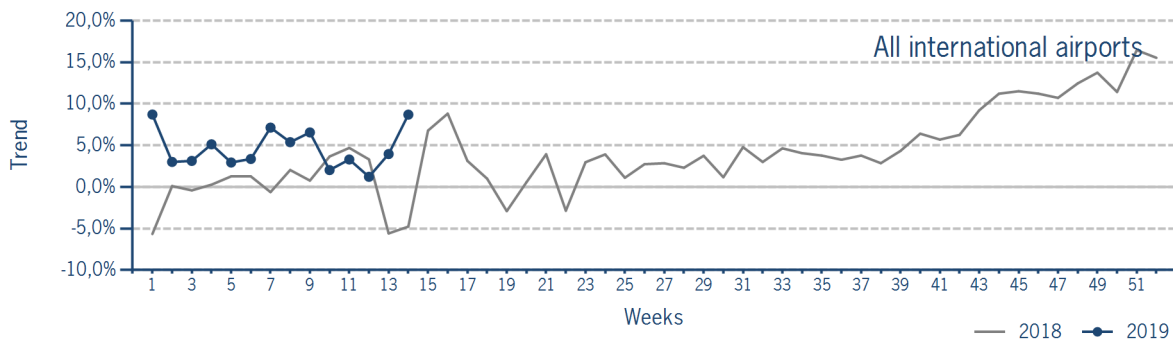
IFR events (take-offs and landings) at the international DFS towers in the Federal Republic of Germany.

	2019	2018	Trend
<b>Week 14</b>	42.066	38.700	8,7%
<b>Cumulated Weeks</b>	525.509	502.583	4,6%



### IFR flights at international German airports - trend

Trend in the number of IFR events (take-offs and landings) at the international DFS towers in the Federal Republic of Germany.



### IFR flights at international German airports - airport category

IFR events (take-offs and landings) at the international DFS towers in the Federal Republic of Germany differentiated by Hub Gateways (HUB), International Access Airports 1 (IAA1) and International Access Airports 2 (IAA2).

	HUB	IAA1	IAA2
<b>Week 14</b>	22.797	17.648	1.621
<b>Trend</b>	7,8%	10,1%	5,9%
<b>Cumulated Weeks</b>	287.504	219.260	18.745
<b>Trend</b>	4,4%	5,4%	-2,2%

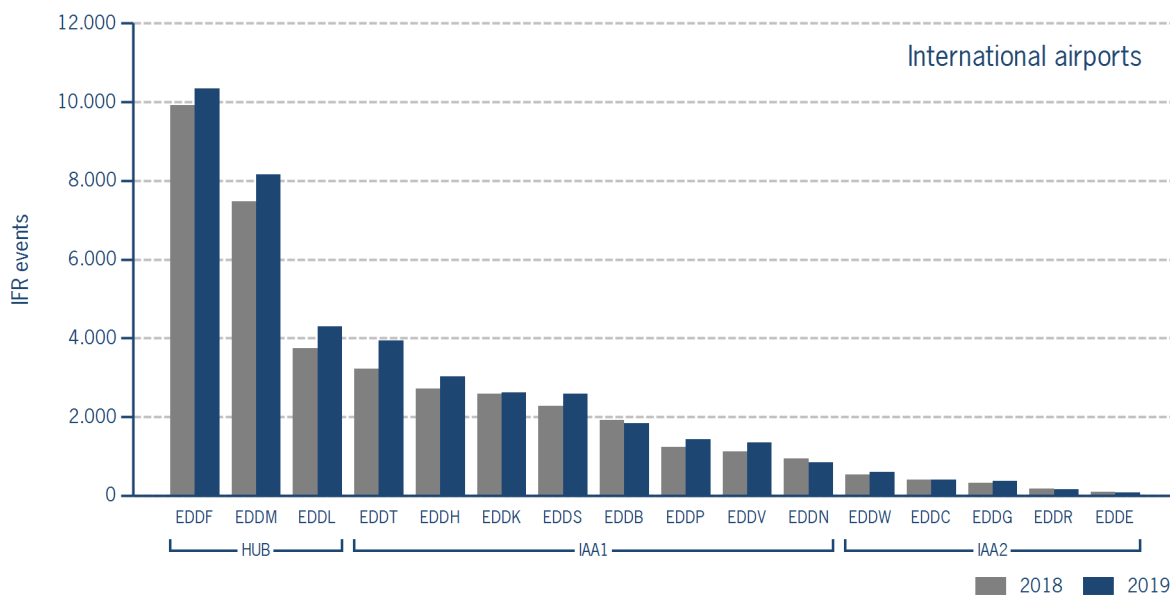
**IFR flights at international German airports - in detail**

IFR events (take-offs and landings) at the different international DFS towers in the Federal Republic of Germany.

		Week 14	Trend	Week 1 - 14	Trend
<b>HUB</b>					
EDDF	Frankfurt/Main	10.342	4,2%	127.682	2,7%
EDDL	Düsseldorf	4.302	14,7%	55.622	10,5%
EDDM	München	8.153	9,2%	104.200	3,4%

		Week 14	Trend	Week 1 - 14	Trend
<b>IAA1</b>					
EDDB	Berlin-Schönefeld	1.837	-4,4%	23.856	-4,4%
EDDH	Hamburg	3.034	11,7%	36.867	3,8%
EDDK	Köln/Bonn	2.619	1,1%	32.603	-0,6%
EDDN	Nürnberg	839	-10,5%	11.777	-4,3%
EDDP	Leipzig/Halle	1.430	16,2%	19.151	6,9%
EDDS	Stuttgart	2.589	13,3%	30.417	4,5%
EDDT	Berlin-Tegel	3.947	22,6%	50.033	21,9%
EDDV	Hannover	1.353	20,2%	14.556	1,5%

		Week 14	Trend	Week 1 - 14	Trend
<b>IAA2</b>					
EDDC	Dresden	400	0,8%	5.042	0,4%
EDDE	Erfurt/Weimar	84	-8,7%	1.013	2,5%
EDDG	Münster/Osnabrück	366	12,3%	4.194	2,0%
EDDR	Saarbrücken	164	-4,7%	1.543	-23,7%
EDDW	Bremen	607	11,8%	6.953	-0,9%



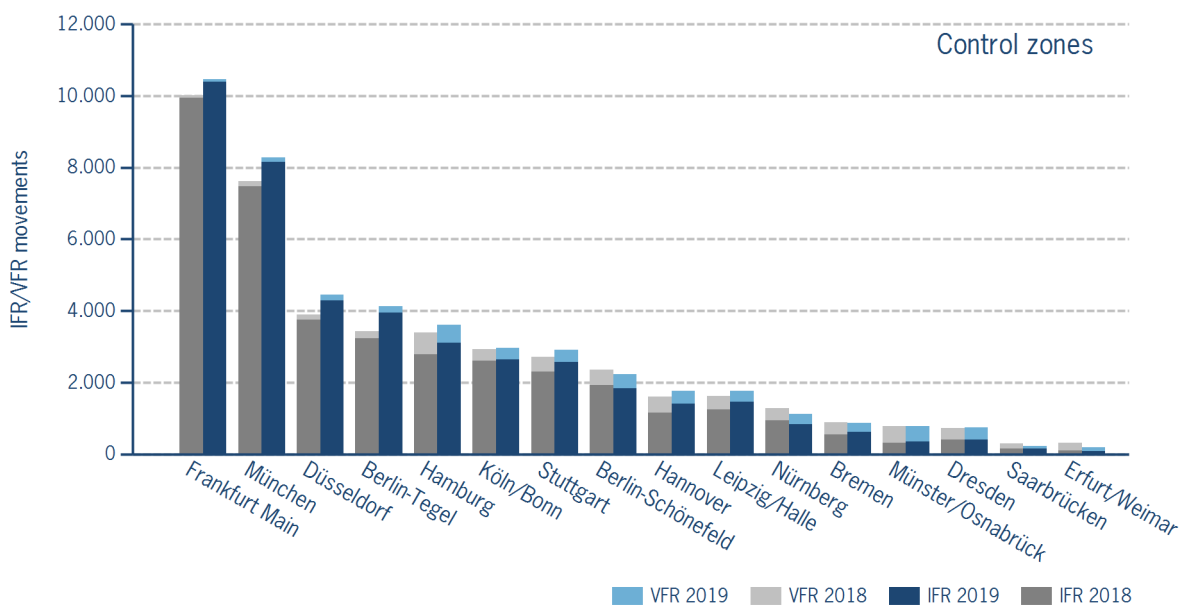
IFR/VFR flights in control zones of DFS towers

IFR/VFR movements (entries, exits, overflights and domestics) at the different control zones of international DFS towers.

	Week 14	Trend	Week 1 - 14	Trend
Berlin-Schönefeld	2.236	-4,9%	27.020	-1,2%
Berlin-Tegel	4.131	20,4%	51.869	20,2%
Bremen	878	-0,6%	9.654	-3,3%
Dresden	745	1,5%	7.495	0,7%
Düsseldorf	4.452	14,3%	57.200	9,8%
Erfurt/Weimar	194	-36,6%	2.360	-2,2%
Frankfurt Main	10.461	4,5%	128.983	2,8%
Hamburg	3.609	6,3%	42.139	3,2%
Hannover	1.763	9,7%	19.212	0,4%
Köln/Bonn	2.964	1,0%	35.799	-1,8%
Leipzig/Halle	1.763	8,7%	22.216	4,7%
München	8.275	8,6%	105.643	3,5%
Münster/Osnabrück	775	-1,6%	7.932	-6,0%
Nürnberg	1.120	-12,7%	14.798	-3,5%
Saarbrücken	233	-20,2%	2.369	-24,5%
Stuttgart	2.913	7,4%	33.863	4,0%

Additional information:

Münster reported 148 glider movements for the current week, i.e. 450 glider movements for the cumulated year.



### IFR flights at regional German airports - in detail

IFR events (take-offs and landings) at the different regional towers in the Federal Republic of Germany with control zone and barely any PPR.

	2019	2018	Trend
<b>Week 14</b>	3.442	3.062	12,4%
<b>Cumulated Weeks</b>	39.036	38.192	2,2%

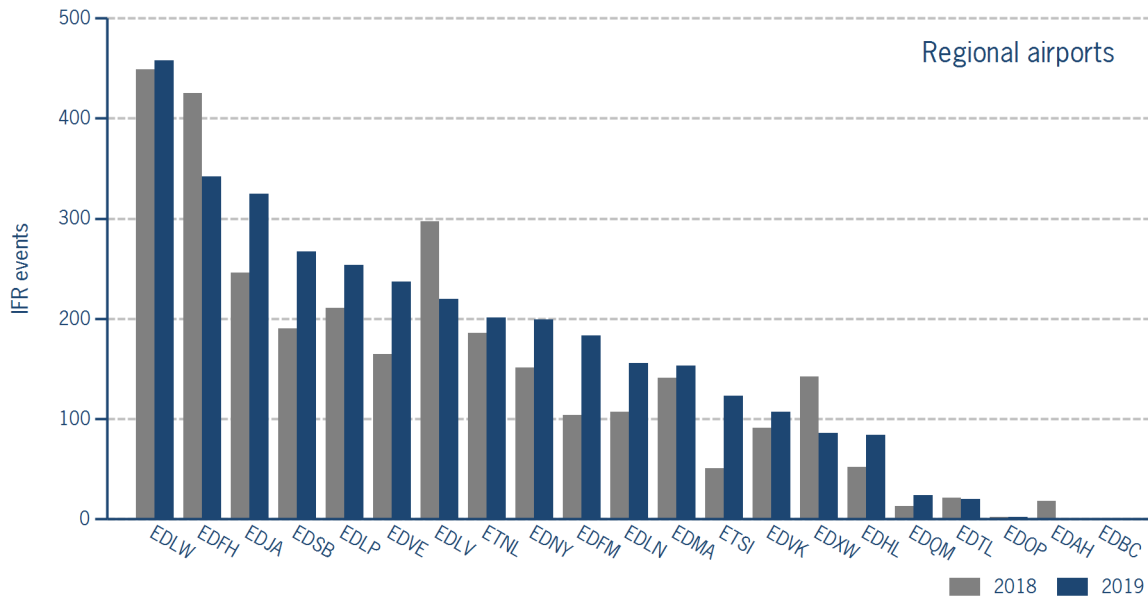
	Week 14	Trend	Week 1 - 14	Trend
EDAH Heringsdorf	1	-94,4%	103	2,0%
EDBC Magdeburg/Cochstedt	0	N/A	1	0,0%
EDFH Frankfurt-Hahn	342	-19,5%	4.532	-9,3%
EDFM Mannheim City	183	76,0%	1.737	6,2%
EDHL Lübeck-Blankensee	84	61,5%	678	67,0%
EDJA Memmingen	325	32,1%	3.628	16,1%
EDLN Mönchengladbach	156	45,8%	1.647	1,1%
EDLP Paderborn/Lippstadt	254	20,4%	2.971	6,5%
EDLV Niederrhein	220	-25,9%	2.016	-23,0%
EDLW Dortmund	458	2,0%	5.825	8,4%
EDMA Augsburg	153	8,5%	1.625	-3,5%
EDNY Friedrichshafen	199	31,8%	2.623	12,6%
EDOP Schwerin-Parchim	2	0,0%	24	-86,4%
EDQM Hof-Plauen	24	84,6%	361	20,7%
EDSB Karlsruhe/Baden-Baden	267	40,5%	2.742	1,0%
EDTL Lahr	20	-4,8%	377	6,2%
EDVE Braunschweig-Wolfsburg	237	43,6%	2.472	2,0%
EDVK Kassel-Calden	107	17,6%	1.013	-5,5%
EDXW Sylt	86	-39,4%	852	-8,8%
ETNL Laage	201	8,1%	2.285	6,3%
ETSI Ingolstadt/Manching	123	141,2%	1.524	10,6%

\*The value is of limited conclusiveness (OLC).

Please note: The airport Magdeburg-Cochstedt (EDBC) is currently closed.

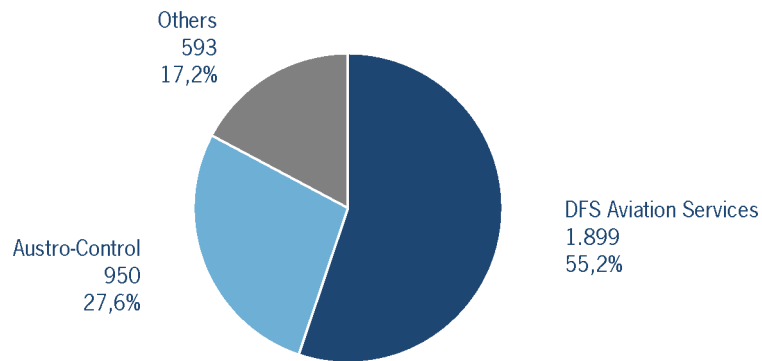
### IFR flights at regional German airports - in detail

IFR events (take-offs and landings) at the different regional towers in the Federal Republic of Germany with control zone and barely any PPR.



### IFR flights at regional German airports - air traffic service providers

Percentage of IFR events (take-offs and landings) at the regional towers in the Federal Republic of Germany differentiated between DFS Aviation Services, Austro Control and other providers.



- DFS Aviation Services: Dortmund (EDLW), Friedrichshafen (EDNY), Karlsruhe/Baden-Baden (EDSB), Lahr (EDTL), Magdeburg/Cochstedt (EDBC), Memmingen (EDJA), Mönchengladbach (EDLN), Niederrhein (EDLV), Paderborn/Lippstadt (EDLP)
- Austro Control: Augsburg (EDMA), Braunschweig-Wolfsburg (EDVE), Frankfurt-Hahn (EDFH), Heringsdorf (EDAH), Hof-Plauen (EDQM), Kassel-Calden (EDVK), Lübeck-Blankensee (EDHL), Schwerin-Parchim (EDOP)
- Others: Ingolstadt/Manching (ETSI), Laage (ETNL), Mannheim City (EDFM), Sylt (EDXW)



## ATFM Arrival Delay

(Data Source: NM statistics, DFS LIZ)

ATFM Arrival Delay with reference to the relevant airport, in minutes per IFR arrival.

*ATFM Arrival Delay:*

*sum of all arrival ATFM delay divided by the sum of all inbound flights for the particular traffic volume*

Airports		ATC Delay [min/arrival]	non ATC Delay [min/arrival]	
	All Airports	0,0829	0,2516	
EDDH	Hamburg	1,1109	1,2686	
EDDT	Berlin-Tegel	0	0,7632	
EDDP	Leipzig/Halle	0	0,4735	
EDDF	Frankfurt/Main	0	0,2356	
EDDL	Düsseldorf	0	0,1263	
EDDS	Stuttgart	0,0479	0	
EDDK	Köln/Bonn	0	0,0283	

Please note: The ATFM delay data are provided by NM statistics. Due to internal distribution of the ATFM delay, data are modified by CC/FC and TWR/M. The inbound flight information is based on LIZ statistics.

All Airports means all international German airports: Berlin-Schönefeld (EDDB), Berlin-Tegel (EDDT), Bremen (EDDW), Dresden (EDDC), Düsseldorf (EDDL), Erfurt/Weimar (EDDE), Frankfurt/Main (EDDF), Hamburg (EDDH), Hannover (EDDV), Köln/Bonn (EDDK), Leipzig/Halle (EDDP), München (EDDM), Münster/Osnabrück (EDDG), Nürnberg (EDDN), Saarbrücken (EDDR), Stuttgart (EDDS)