



LIZ Bulletin

DFS Situation and Information Centre

Week 20

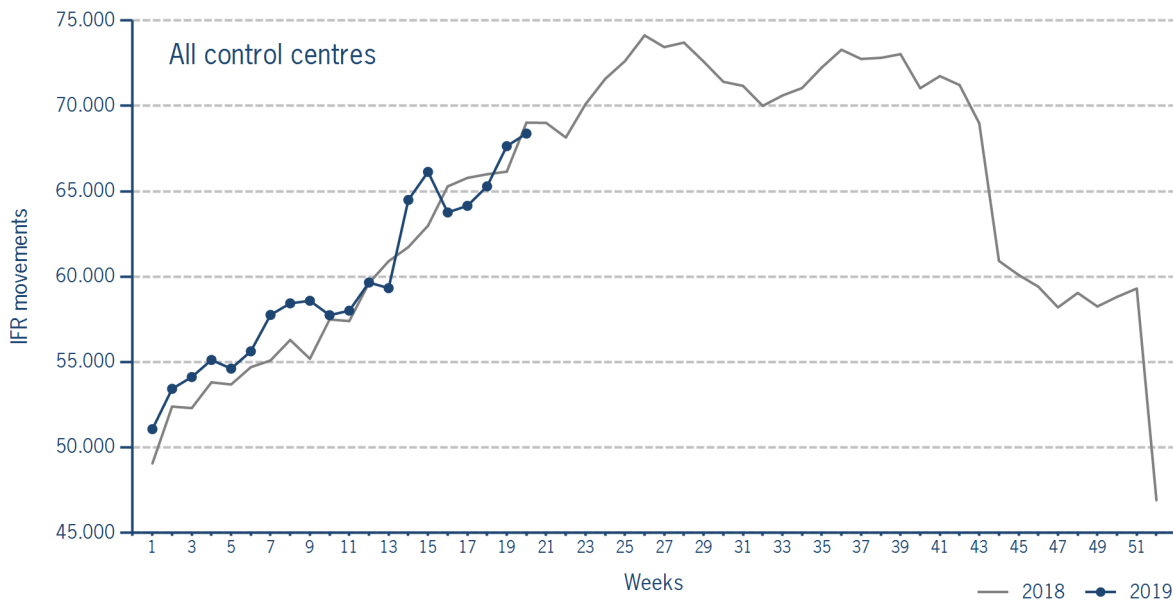
13 MAY 2019 - 19 MAY 2019

Version 22.05.2019

IFR flights in the Federal Republic of Germany

IFR movements (entries, exits, overflights and domestics) in all control sectors with a German designator.

	2019	2018	Trend
Week 20	68.381	69.022	-0,9%
Cumulated Weeks	1.193.322	1.174.861	1,6%

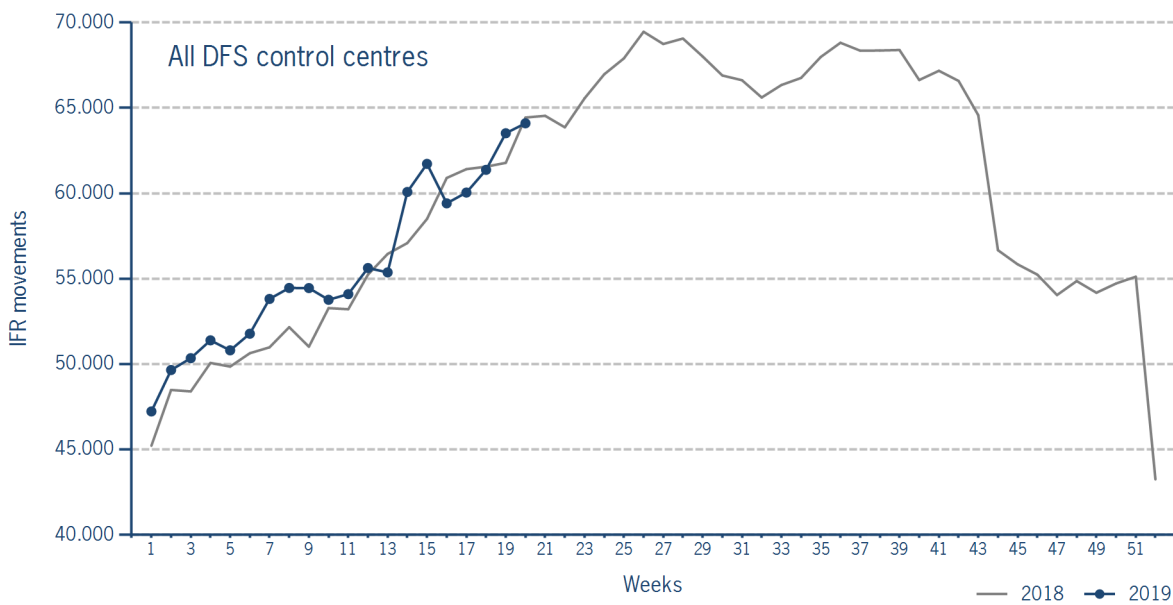


Please note: This count covers the traffic in the area build by all control sectors with a German designator („ED“), regardless of the service provider, including civil and military traffic in sectors controlled by DFS and Maastricht UAC (Maastricht-Hannover sectors). The area counted is composed of modular control sectors designed for ATC purposes with partly cross border structures and is therefore not identical to the political border of the Federal Republic of Germany or the national Flight Information Region (FIR).

IFR flights controlled by DFS

IFR movements (entries, exits, overflights and domestics) in control sectors controlled by DFS.

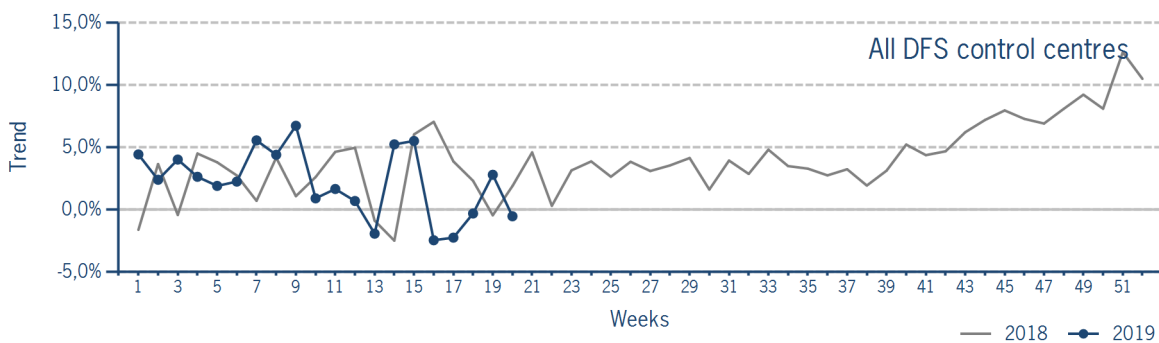
	2019	2018	Trend
Week 20	64.100	64.436	-0,5%
Cumulated Weeks	1.112.962	1.090.596	2,1%



Please note: This count covers the traffic in the area build by control sectors of DFS control centres, including civil and military traffic. Traffic in Maastricht UAC (Maastricht-Hannover sectors) is not counted.

IFR flights controlled by DFS - trend

Trend in the number of IFR movements (entries, exits, overflights and domestics) in control sectors controlled by DFS.

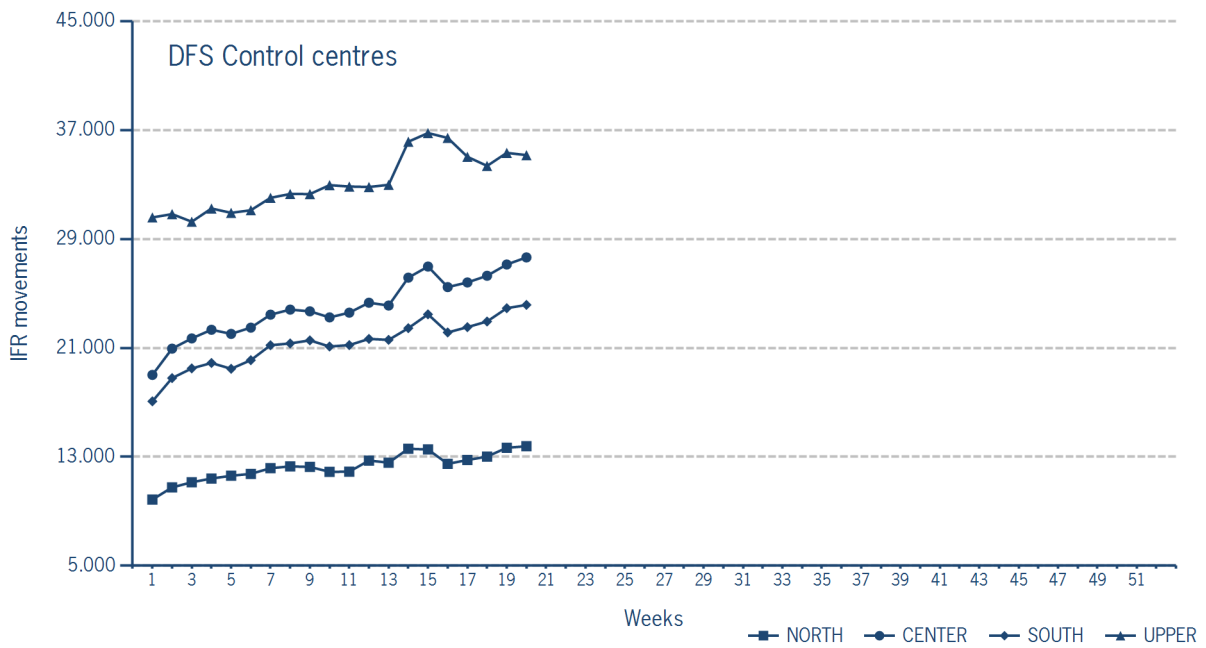


IFR flights controlled by DFS - in detail

IFR movements (entries, exits, overflights and domestics) controlled by DFS at the different control centres.

	NORTH	CENTER	SOUTH	UPPER
Week 20	13.775	27.648	24.159	35.160
Trend	-2,0%	1,2%	-0,5%	-9,4%
Cumulated Weeks	245.181	480.209	426.049	662.440
Trend	3,7%	1,8%	2,4%	-0,6%

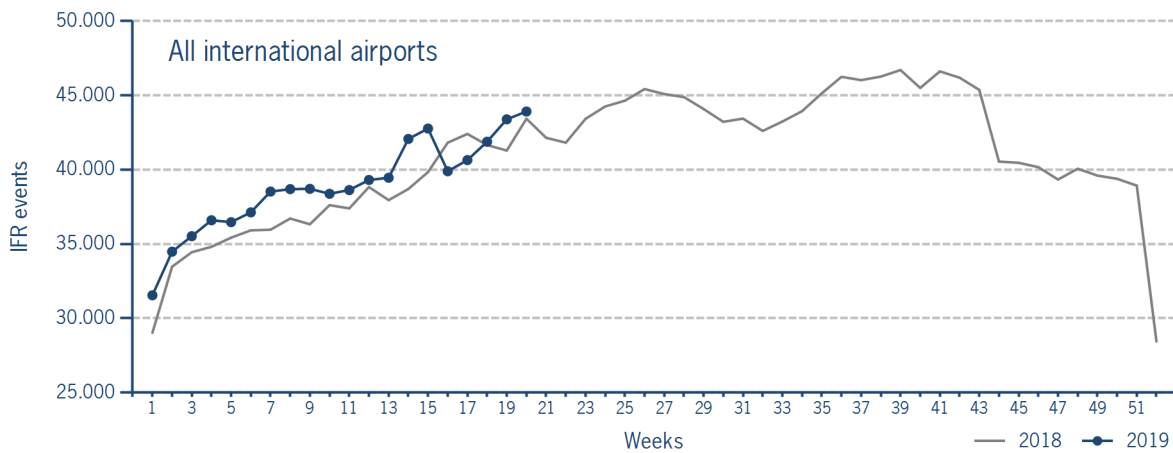
Please note: The trend numbers compare counts of the airspaces in their current configuration to the count of the same airspace in 2018.



IFR flights at international German airports

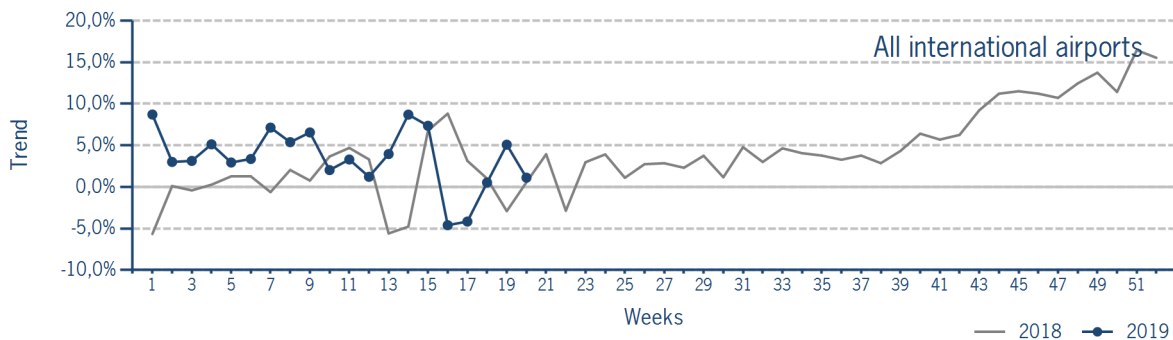
IFR events (take-offs and landings) at the international DFS towers in the Federal Republic of Germany.

	2019	2018	Trend
Week 20	43.914	43.428	1,1%
Cumulated Weeks	777.994	753.010	3,3%



IFR flights at international German airports - trend

Trend in the number of IFR events (take-offs and landings) at the international DFS towers in the Federal Republic of Germany.



IFR flights at international German airports - airport category

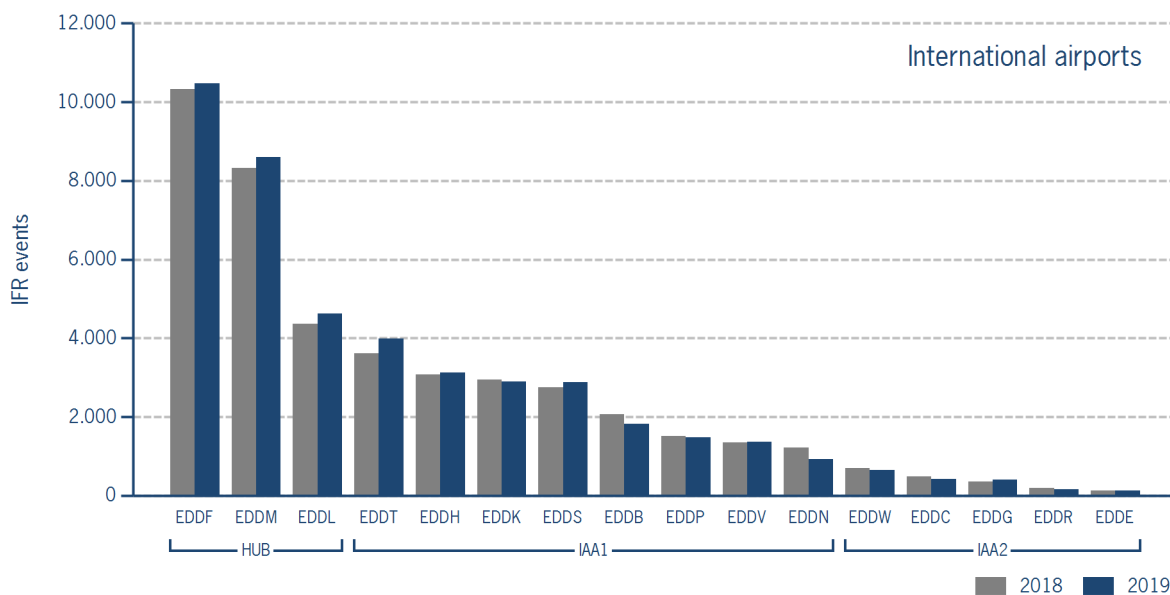
IFR events (take-offs and landings) at the international DFS towers in the Federal Republic of Germany differentiated by Hub Gateways (HUB), International Access Airports 1 (IAA1) and International Access Airports 2 (IAA2).

	HUB	IAA1	IAA2
Week 20	23.695	18.471	1.748
Trend	2,9%	-0,4%	-6,4%
Cumulated Weeks	424.697	324.803	28.494
Trend	3,7%	3,6%	-4,0%

IFR flights at international German airports - in detail

IFR events (take-offs and landings) at the different international DFS towers in the Federal Republic of Germany.

		Week 20	Trend	Week 1 - 20	Trend
HUB					
EDDF	Frankfurt/Main	10.477	1,4%	189.275	2,1%
EDDL	Düsseldorf	4.622	5,7%	82.401	9,5%
EDDM	München	8.596	3,3%	153.021	2,7%
IAA1					
EDDB	Berlin-Schönefeld	1.819	-12,2%	34.467	-7,5%
EDDH	Hamburg	3.124	1,7%	54.869	2,8%
EDDK	Köln/Bonn	2.905	-1,6%	48.887	-1,2%
EDDN	Nürnberg	928	-23,6%	17.156	-8,2%
EDDP	Leipzig/Halle	1.477	-1,9%	27.735	4,7%
EDDS	Stuttgart	2.876	4,4%	46.558	4,8%
EDDT	Berlin-Tegel	3.983	10,3%	73.108	18,0%
EDDV	Hannover	1.359	0,1%	22.023	0,0%
IAA2					
EDDC	Dresden	415	-14,4%	7.394	-4,0%
EDDE	Erfurt/Weimar	120	-7,7%	1.565	-5,8%
EDDG	Münster/Osnabrück	400	12,0%	6.438	2,4%
EDDR	Saarbrücken	168	-16,0%	2.480	-20,5%
EDDW	Bremen	645	-7,2%	10.617	-2,7%



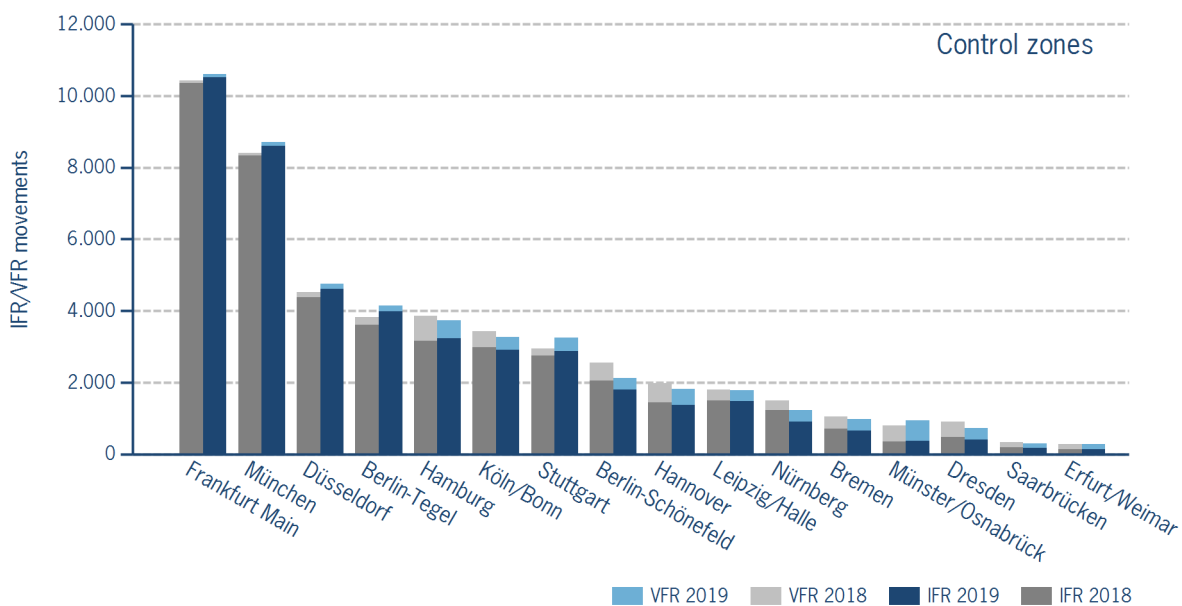
IFR/VFR flights in control zones of DFS towers

IFR/VFR movements (entries, exits, overflights and domestics) at the different control zones of international DFS towers.

	Week 20	Trend	Week 1 - 20	Trend
Berlin-Schönefeld	2.124	-16,7%	39.645	-7,2%
Berlin-Tegel	4.149	8,4%	76.009	16,3%
Bremen	979	-6,1%	15.026	-4,7%
Dresden	733	-19,7%	11.842	-7,0%
Düsseldorf	4.763	5,3%	84.741	8,7%
Erfurt/Weimar	276	-0,4%	3.917	-7,4%
Frankfurt Main	10.604	1,7%	191.196	2,1%
Hamburg	3.735	-3,2%	63.624	1,2%
Hannover	1.817	-8,6%	29.327	-1,8%
Köln/Bonn	3.265	-4,7%	53.880	-2,9%
Leipzig/Halle	1.790	-1,1%	32.536	1,8%
München	8.709	3,6%	155.144	2,6%
Münster/Osnabrück	934	16,0%	12.659	-4,6%
Nürnberg	1.236	-17,2%	21.983	-7,1%
Saarbrücken	295	-10,3%	3.903	-22,0%
Stuttgart	3.251	10,1%	51.871	3,2%

Additional information:

Münster reported 208 glider movements for the current week, i.e. 1.248 glider movements for the cumulated year.



IFR flights at regional German airports - in detail

IFR events (take-offs and landings) at the different regional towers in the Federal Republic of Germany with control zone and barely any PPR.

	2019	2018	Trend
Week 20	3.440	3.693	-6,9%
Cumulated Weeks	59.326	59.771	-0,7%

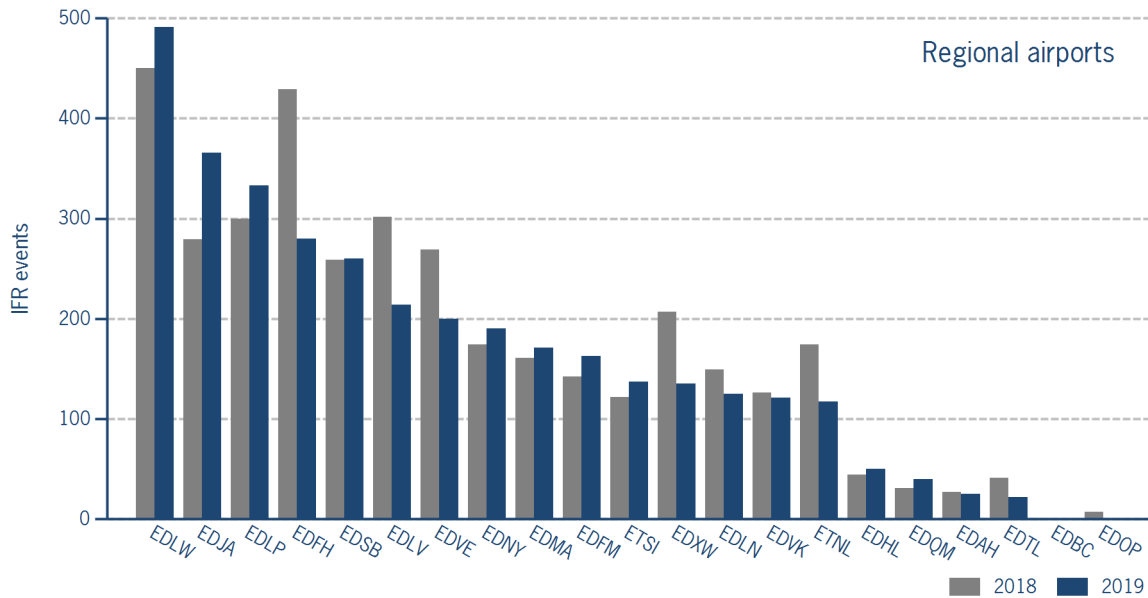
	Week 20	Trend	Week 1 - 20	Trend
EDAH Heringsdorf	25	-7,4%	245	12,4%
EDBC Magdeburg/Cochstedt	0	N/A	1	0,0%
EDFH Frankfurt-Hahn	280	-34,7%	6.400	-15,5%
EDFM Mannheim City	163	14,8%	2.568	6,3%
EDHL Lübeck-Blankensee	50	13,6%	1.092	47,6%
EDJA Memmingen	366	31,2%	5.591	17,0%
EDLN Mönchengladbach	125	-16,1%	2.348	-6,2%
EDLP Paderborn/Lippstadt	333	11,0%	4.648	4,5%
EDLV Niederrhein	214	-29,1%	3.304	-26,4%
EDLW Dortmund	491	9,1%	8.620	7,4%
EDMA Augsburg	171	6,2%	2.524	-2,9%
EDNY Friedrichshafen	190	9,2%	4.296	9,5%
EDOP Schwerin-Parchim	0	-100,0%	24	-90,0%
EDQM Hof-Plauen	40	29,0%	549	17,3%
EDSB Karlsruhe/Baden-Baden	260	0,4%	4.187	-0,6%
EDTL Lahr	22	-46,3%	597	4,4%
EDVE Braunschweig-Wolfsburg	200	-25,7%	3.622	-3,9%
EDVK Kassel-Calden	121	-4,0%	1.566	-8,1%
EDXW Sylt	135	-34,8%	1.654	-5,5%
ETNL Laage	117	-32,8%	3.276	1,5%
ETSI Ingolstadt/Manching	137	12,3%	2.214	4,6%

*The value is of limited conclusiveness (OLC).

Please note: The airport Magdeburg-Cochstedt (EDBC) is currently closed.

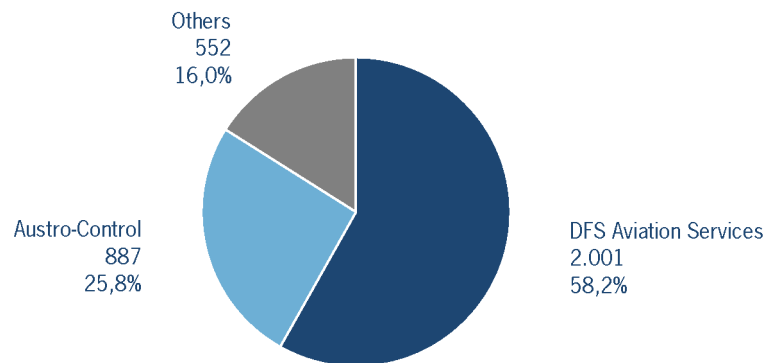
IFR flights at regional German airports - in detail

IFR events (take-offs and landings) at the different regional towers in the Federal Republic of Germany with control zone and barely any PPR.



IFR flights at regional German airports - air traffic service providers

Percentage of IFR events (take-offs and landings) at the regional towers in the Federal Republic of Germany differentiated between DFS Aviation Services, Austro Control and other providers.



DFS Aviation Services: Dortmund (EDLW), Friedrichshafen (EDNY), Karlsruhe/Baden-Baden (EDSB), Lahr (EDTL), Magdeburg/Cochstedt (EDBC), Memmingen (EDJA), Mönchengladbach (EDLN), Niederrhein (EDLV), Paderborn/Lippstadt (EDLP)

Austro Control: Augsburg (EDMA), Braunschweig-Wolfsburg (EDVE), Frankfurt-Hahn (EDFH), Heringsdorf (EDAH), Hof-Plauen (EDQM), Kassel-Calden (EDVK), Lübeck-Blankensee (EDHL), Schwerin-Parchim (EDOP)

Others: Ingolstadt/Manching (ETSI), Laage (ETNL), Mannheim City (EDFM), Sylt (EDXW)

ATFM Arrival Delay

(Data Source: NM statistics, DFS LIZ)

ATFM Arrival Delay with reference to the relevant airport, in minutes per IFR arrival.

ATFM Arrival Delay:

sum of all arrival ATFM delay divided by the sum of all inbound flights for the particular traffic volume

Airports		ATC Delay [min/arrival]	non ATC Delay [min/arrival]	
	All Airports	0,0496	0,9194	
EDDH	Hamburg	0,1280	3,2457	
EDDW	Bremen	2,1835	0	
EDDF	Frankfurt/Main	0	2,0706	
EDDL	Düsseldorf	0,0766	0,6486	
EDDS	Stuttgart	0	0,4595	
EDDP	Leipzig/Halle	0	0,3627	
EDDM	München	0	0,3114	
EDDK	Köln/Bonn	0	0,1838	
EDDT	Berlin-Tegel	0	0,1240	
EDDB	Berlin-Schönefeld	0	0,0022	

Please note: The ATFM delay data are provided by NM statistics. Due to internal distribution of the ATFM delay, data are modified by CC/FC and TWR/M. The inbound flight information is based on LIZ statistics.

All Airports means all international German airports: Berlin-Schönefeld (EDDB), Berlin-Tegel (EDDT), Bremen (EDDW), Dresden (EDDC), Düsseldorf (EDDL), Erfurt/Weimar (EDDE), Frankfurt/Main (EDDF), Hamburg (EDDH), Hannover (EDDV), Köln/Bonn (EDDK), Leipzig/Halle (EDDP), München (EDDM), Münster/Osnabrück (EDDG), Nürnberg (EDDN), Saarbrücken (EDDR), Stuttgart (EDDS)