



# LIZ Bulletin

DFS Situation and Information Centre

**Week 15**

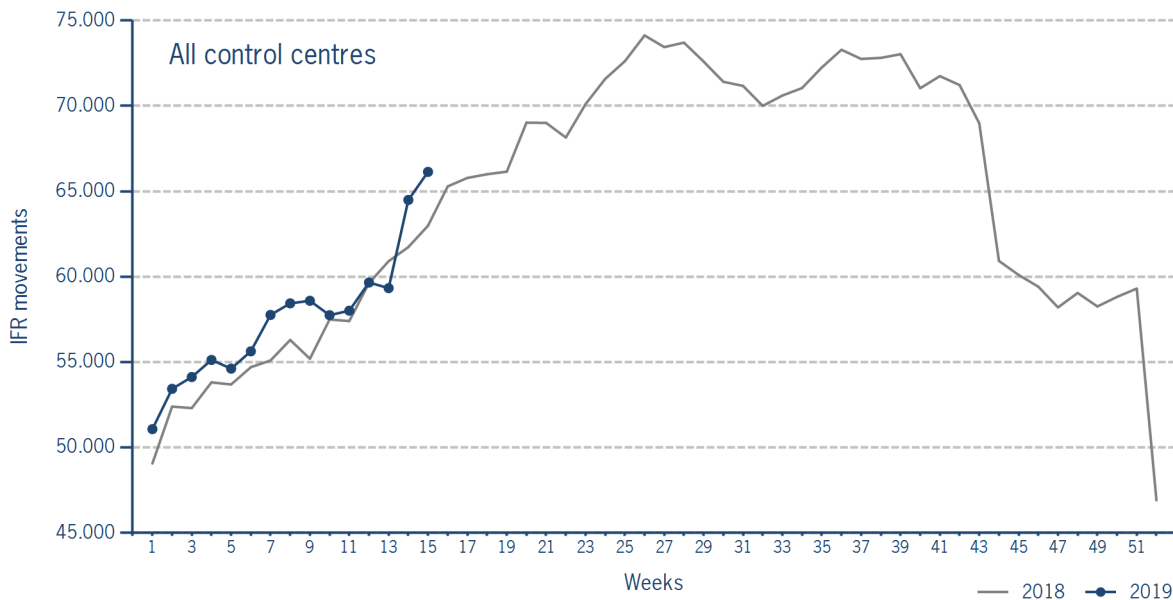
8 APR 2019 - 14 APR 2019

Version 17.04.2019

## IFR flights in the Federal Republic of Germany

IFR movements (entries, exits, overflights and domestics) in all control sectors with a German designator.

	2019	2018	Trend
<b>Week 15</b>	66.137	62.984	5,0%
<b>Cumulated Weeks</b>	864.100	842.625	2,5%

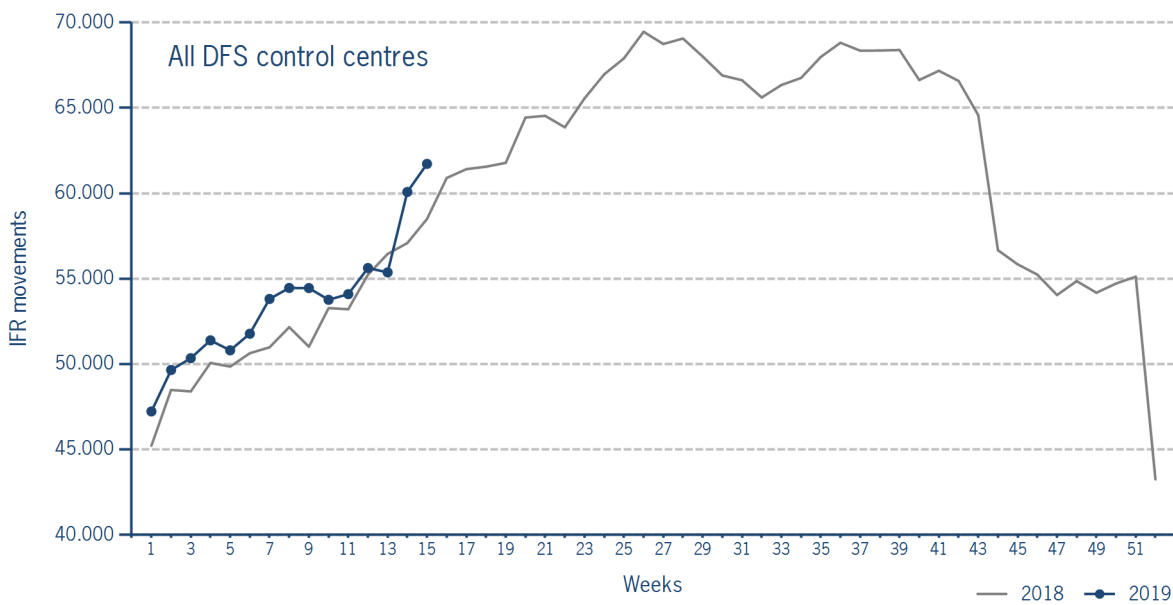


Please note: This count covers the traffic in the area build by all control sectors with a German designator („ED“), regardless of the service provider, including civil and military traffic in sectors controlled by DFS and Maastricht UAC (Maastricht-Hannover sectors). The area counted is composed of modular control sectors designed for ATC purposes with partly cross border structures and is therefore not identical to the political border of the Federal Republic of Germany or the national Flight Information Region (FIR).

### IFR flights controlled by DFS

IFR movements (entries, exits, overflights and domestics) in control sectors controlled by DFS.

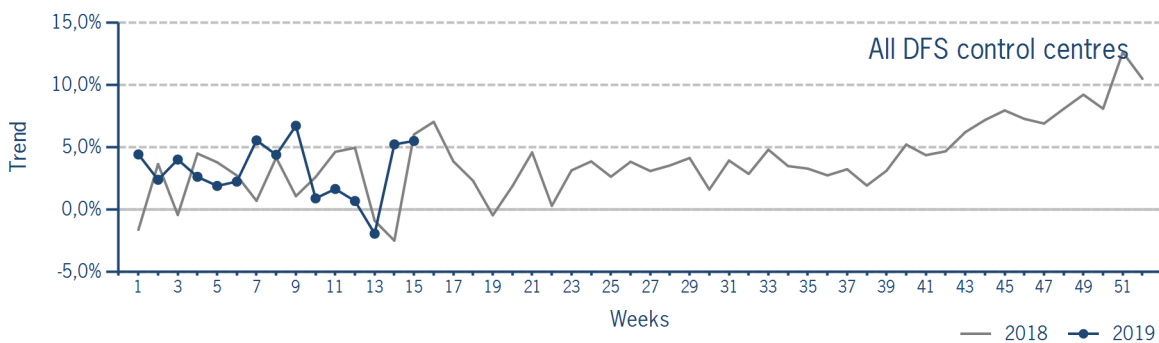
	2019	2018	Trend
<b>Week 15</b>	61.723	58.497	5,5%
<b>Cumulated Weeks</b>	804.519	780.510	3,1%



Please note: This count covers the traffic in the area build by control sectors of DFS control centres, including civil and military traffic. Traffic in Maastricht UAC (Maastricht-Hannover sectors) is not counted.

### IFR flights controlled by DFS - trend

Trend in the number of IFR movements (entries, exits, overflights and domestics) in control sectors controlled by DFS.

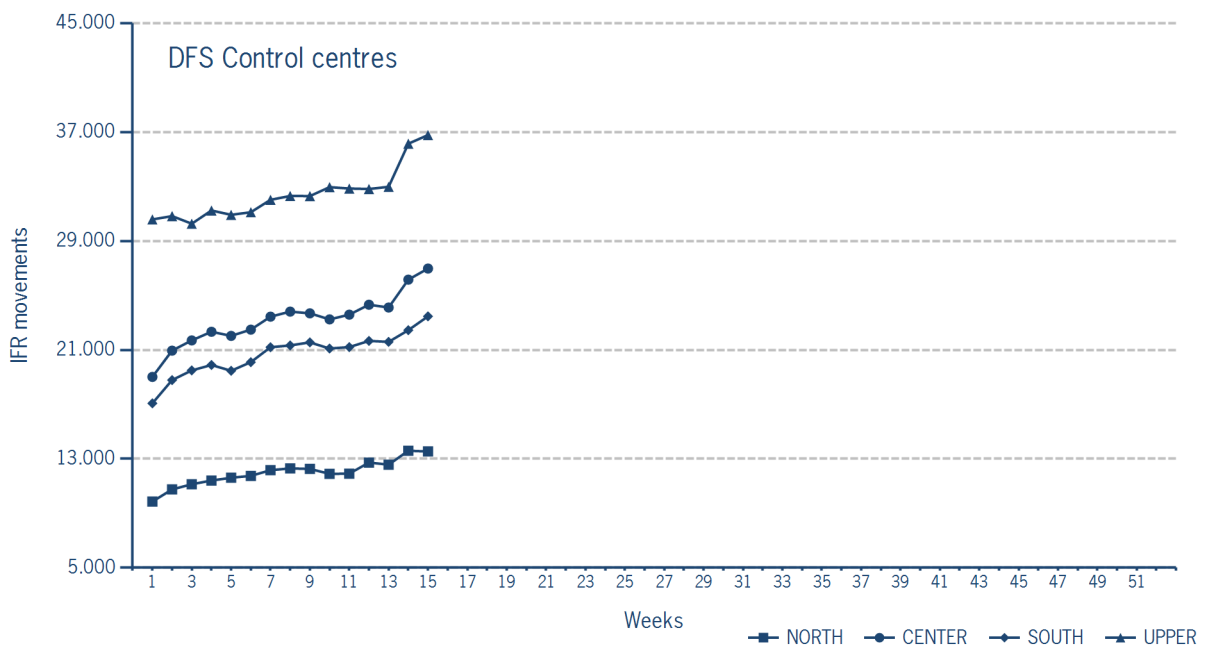


### IFR flights controlled by DFS - in detail

IFR movements (entries, exits, overflights and domestics) controlled by DFS at the different control centres.

	NORTH	CENTER	SOUTH	UPPER
<b>Week 15</b>	13.539	26.977	23.467	36.781
<b>Trend</b>	6,2%	6,6%	7,3%	2,9%
<b>Cumulated Weeks</b>	179.471	347.860	310.373	486.128
<b>Trend</b>	6,3%	2,7%	3,7%	1,5%

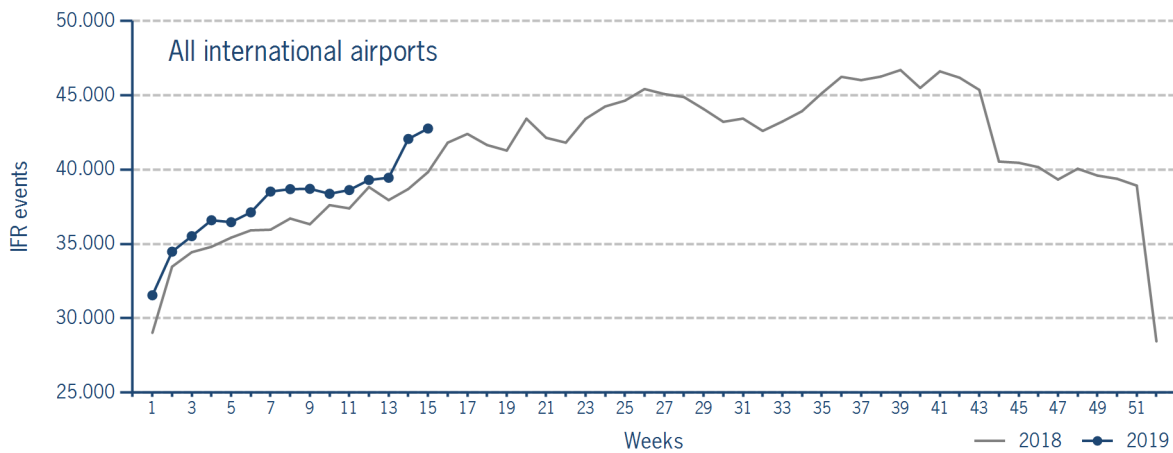
Please note: The trend numbers compare counts of the airspaces in their current configuration to the count of the same airspace in 2018.



### IFR flights at international German airports

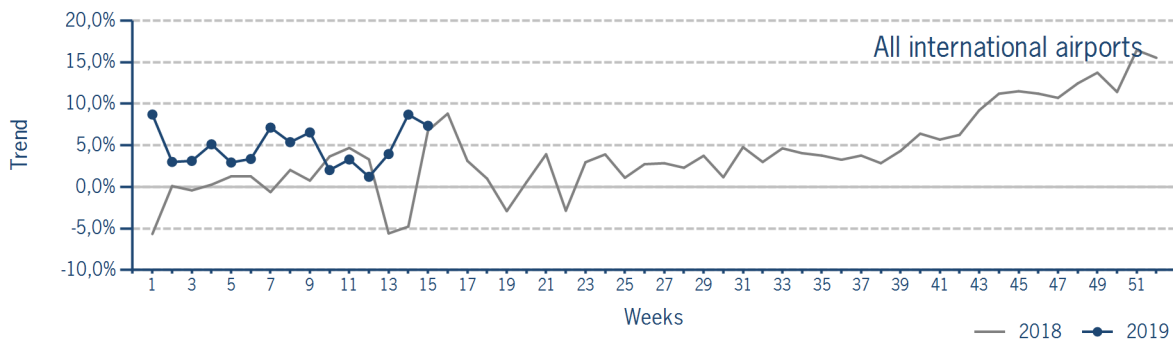
IFR events (take-offs and landings) at the international DFS towers in the Federal Republic of Germany.

	2019	2018	Trend
<b>Week 15</b>	42.768	39.837	7,4%
<b>Cumulated Weeks</b>	568.277	542.420	4,8%



### IFR flights at international German airports - trend

Trend in the number of IFR events (take-offs and landings) at the international DFS towers in the Federal Republic of Germany.



### IFR flights at international German airports - airport category

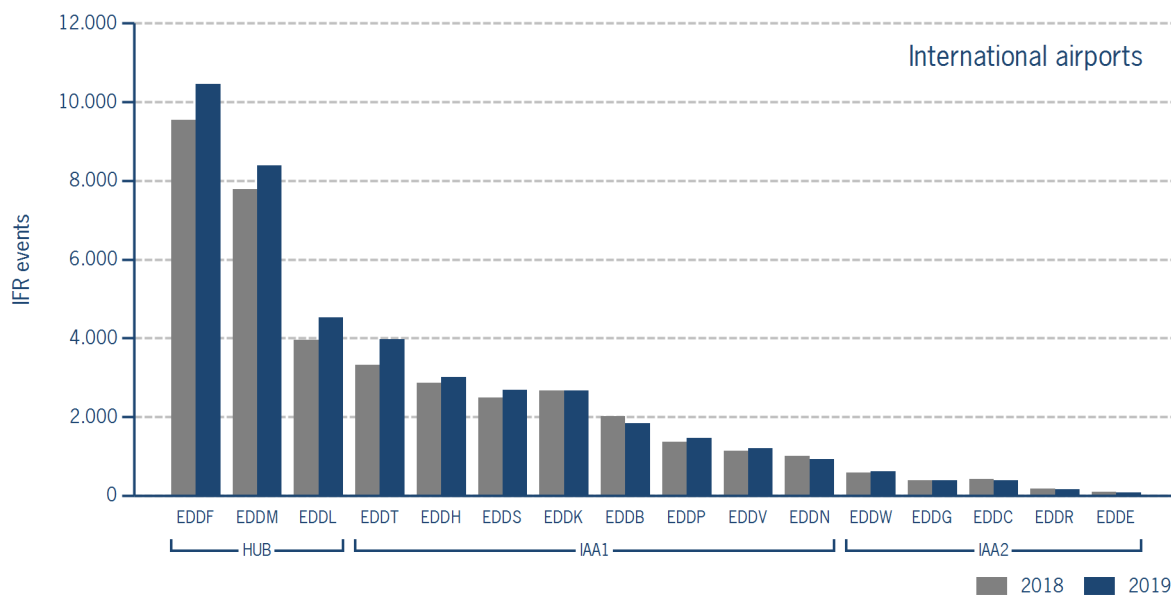
IFR events (take-offs and landings) at the international DFS towers in the Federal Republic of Germany differentiated by Hub Gateways (HUB), International Access Airports 1 (IAA1) and International Access Airports 2 (IAA2).

	HUB	IAA1	IAA2
<b>Week 15</b>	23.369	17.765	1.634
<b>Trend</b>	9,7%	5,3%	-1,7%
<b>Cumulated Weeks</b>	310.873	237.025	20.379
<b>Trend</b>	4,8%	5,4%	-2,1%

IFR flights at international German airports - in detail

IFR events (take-offs and landings) at the different international DFS towers in the Federal Republic of Germany.

		Week 15	Trend	Week 1 - 15	Trend
<b>HUB</b>					
EDDF	Frankfurt/Main	10.454	9,4%	138.136	3,1%
EDDL	Düsseldorf	4.530	14,4%	60.152	10,8%
EDDM	München	8.385	7,7%	112.585	3,8%
<b>IAA1</b>					
EDDB	Berlin-Schönefeld	1.832	-9,5%	25.688	-4,8%
EDDH	Hamburg	3.007	4,8%	39.874	3,9%
EDDK	Köln/Bonn	2.674	0,2%	35.277	-0,5%
EDDN	Nürnberg	929	-7,3%	12.706	-4,5%
EDDP	Leipzig/Halle	1.460	7,4%	20.611	6,9%
EDDS	Stuttgart	2.693	7,9%	33.110	4,8%
EDDT	Berlin-Tegel	3.968	19,7%	54.001	21,7%
EDDV	Hannover	1.202	5,3%	15.758	1,8%
<b>IAA2</b>					
EDDC	Dresden	383	-7,9%	5.425	-0,3%
EDDE	Erfurt/Weimar	80	-17,5%	1.093	0,7%
EDDG	Münster/Osnabrück	396	2,9%	4.590	2,1%
EDDR	Saarbrücken	160	-13,0%	1.703	-22,8%
EDDW	Bremen	615	6,0%	7.568	-0,4%



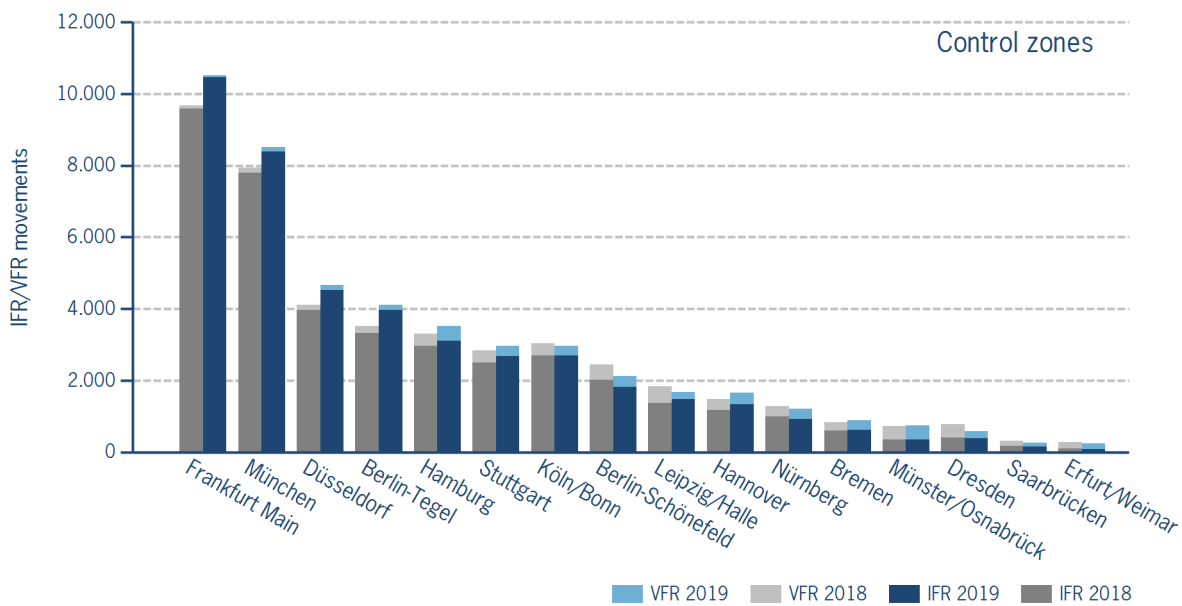
IFR/VFR flights in control zones of DFS towers

IFR/VFR movements (entries, exits, overflights and domestics) at the different control zones of international DFS towers.

	Week 15	Trend	Week 1 - 15	Trend
Berlin-Schönefeld	2.131	-12,7%	29.151	-2,2%
Berlin-Tegel	4.119	16,9%	55.988	19,9%
Bremen	891	7,0%	10.545	-2,5%
Dresden	586	-24,6%	8.081	-1,7%
Düsseldorf	4.670	13,6%	61.870	10,1%
Erfurt/Weimar	237	-17,4%	2.597	-3,8%
Frankfurt Main	10.511	8,6%	139.494	3,2%
Hamburg	3.519	6,5%	45.658	3,5%
Hannover	1.651	11,9%	20.863	1,2%
Köln/Bonn	2.965	-2,2%	38.764	-1,9%
Leipzig/Halle	1.668	-9,4%	23.884	3,5%
München	8.511	7,2%	114.154	3,8%
Münster/Osnabrück	746	2,9%	8.678	-5,3%
Nürnberg	1.212	-5,2%	16.010	-3,6%
Saarbrücken	263	-17,8%	2.632	-23,9%
Stuttgart	2.971	4,7%	36.834	4,1%

Additional information:

Münster reported 70 glider movements for the current week, i.e. 520 glider movements for the cumulated year.



### IFR flights at regional German airports - in detail

IFR events (take-offs and landings) at the different regional towers in the Federal Republic of Germany with control zone and barely any PPR.

	2019	2018	Trend
<b>Week 15</b>	4.045	3.628	11,5%
<b>Cumulated Weeks</b>	43.081	41.820	3,0%

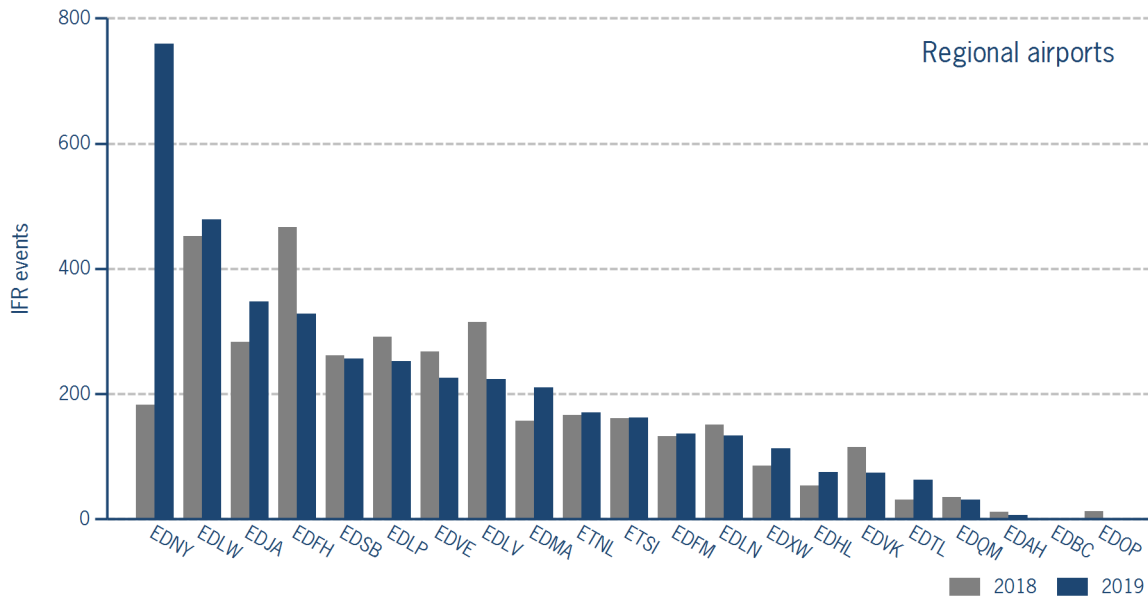
	Week 15	Trend	Week 1 - 15	Trend
EDAH Heringsdorf	6	-45,5%	109	-2,7%
EDBC Magdeburg/Cochstedt	0	N/A	1	0,0%
EDFH Frankfurt-Hahn	328	-29,6%	4.860	-11,1%
EDFM Mannheim City	136	3,0%	1.873	6,0%
EDHL Lübeck-Blankensee	75	41,5%	753	64,1%
EDJA Memmingen	348	23,0%	3.976	16,7%
EDLN Mönchengladbach	133	-11,9%	1.780	0,0%
EDLP Paderborn/Lippstadt	252	-13,4%	3.223	4,6%
EDLV Niederrhein	224	-28,9%	2.240	-23,7%
EDLW Dortmund	479	6,0%	6.304	8,2%
EDMA Augsburg	210	33,8%	1.835	-0,3%
EDNY Friedrichshafen	759	OLC*	3.382	34,6%
EDOP Schwerin-Parchim	0	-100,0%	24	-87,3%
EDQM Hof-Plauen	31	-11,4%	392	17,4%
EDSB Karlsruhe/Baden-Baden	256	-1,9%	2.998	0,7%
EDTL Lahr	63	103,2%	440	14,0%
EDVE Braunschweig-Wolfsburg	226	-15,7%	2.698	0,3%
EDVK Kassel-Calden	74	-35,7%	1.087	-8,4%
EDXW Sylt	113	32,9%	965	-5,3%
ETNL Laage	170	2,4%	2.455	6,0%
ETSI Ingolstadt/Manching	162	0,6%	1.686	9,6%

\*The value is of limited conclusiveness (OLC).

Please note: The airport Magdeburg-Cochstedt (EDBC) is currently closed.

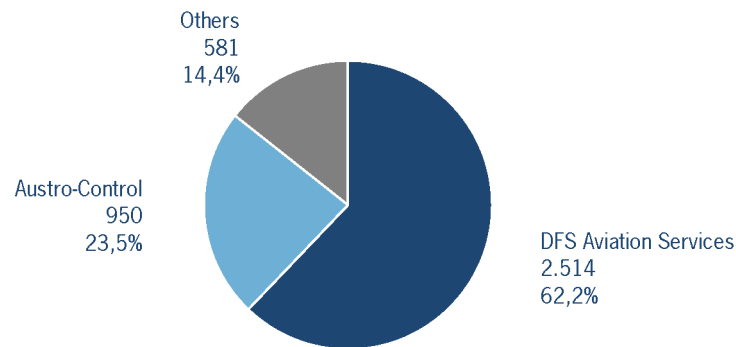
### IFR flights at regional German airports - in detail

IFR events (take-offs and landings) at the different regional towers in the Federal Republic of Germany with control zone and barely any PPR.



### IFR flights at regional German airports - air traffic service providers

Percentage of IFR events (take-offs and landings) at the regional towers in the Federal Republic of Germany differentiated between DFS Aviation Services, Austro Control and other providers.



- DFS Aviation Services: Dortmund (EDLW), Friedrichshafen (EDNY), Karlsruhe/Baden-Baden (EDSB), Lahr (EDTL), Magdeburg/Cochstedt (EDBC), Memmingen (EDJA), Mönchengladbach (EDLN), Niederrhein (EDLV), Paderborn/Lippstadt (EDLP)
- Austro Control: Augsburg (EDMA), Braunschweig-Wolfsburg (EDVE), Frankfurt-Hahn (EDFH), Heringsdorf (EDAH), Hof-Plauen (EDQM), Kassel-Calden (EDVK), Lübeck-Blankensee (EDHL), Schwerin-Parchim (EDOP)
- Others: Ingolstadt/Manching (ETSI), Laage (ETNL), Mannheim City (EDFM), Sylt (EDXW)



## ATFM Arrival Delay

(Data Source: NM statistics, DFS LIZ)

ATFM Arrival Delay with reference to the relevant airport, in minutes per IFR arrival.

*ATFM Arrival Delay:*

*sum of all arrival ATFM delay divided by the sum of all inbound flights for the particular traffic volume*

Airports		ATC Delay [min/arrival]	non ATC Delay [min/arrival]	
	All Airports	0,0226	0,1144	
EDDL	Düsseldorf	0	0,5525	
EDDP	Leipzig/Halle	0,2209	0	
EDDH	Hamburg	0,2142	0	
EDDF	Frankfurt/Main	0	0,1861	
EDDM	München	0	0,0532	

Please note: The ATFM delay data are provided by NM statistics. Due to internal distribution of the ATFM delay, data are modified by CC/FC and TWR/M. The inbound flight information is based on LIZ statistics.

All Airports means all international German airports: Berlin-Schönefeld (EDDB), Berlin-Tegel (EDDT), Bremen (EDDW), Dresden (EDDC), Düsseldorf (EDDL), Erfurt/Weimar (EDDE), Frankfurt/Main (EDDF), Hamburg (EDDH), Hannover (EDDV), Köln/Bonn (EDDK), Leipzig/Halle (EDDP), München (EDDM), Münster/Osnabrück (EDDG), Nürnberg (EDDN), Saarbrücken (EDDR), Stuttgart (EDDS)