



DFS Deutsche Flugsicherung

LIZ

Situation and Information Centre

## ATFM delay report

January 2019

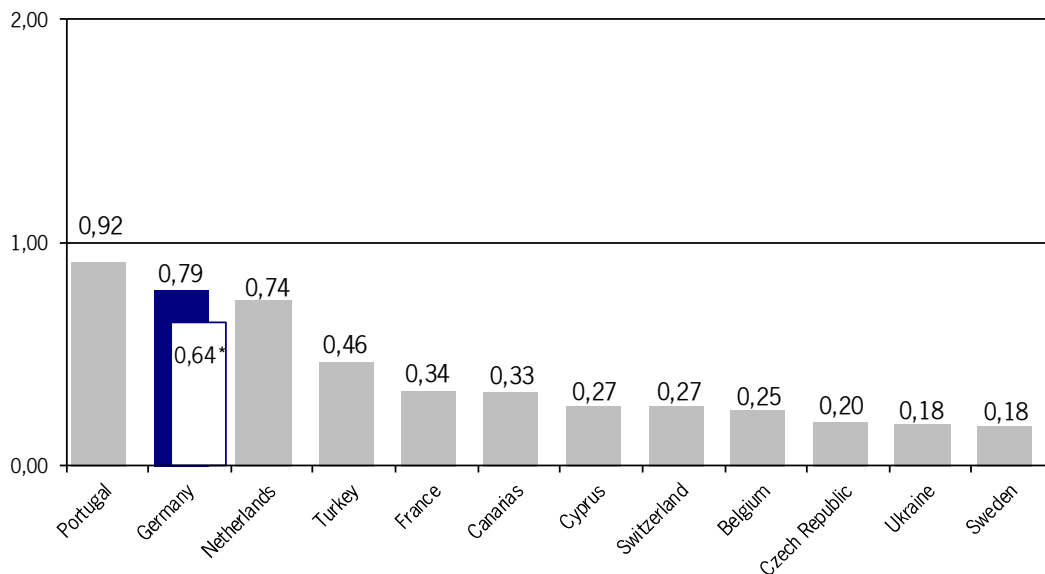
### Air Traffic Flow Management (ATFM) delay ATFM measures in Europe (Data source: NM statistics)

	January 2019		January 2018		Trend 19/18
Total flights	789.567		766.330		3,0%
Regulated flights	74.573	9,4%	56.118	7,3%	32,9%
Delayed flights	37.381	4,7%	28.485	3,7%	31,2%

**Total flights** Number of flight plans having been activated in the EUROCONTROL NM TACT system  
**Regulated flights** Number of flights / percentage of flights with SLOT allocation (with & without delay)  
**Delayed flight** Number of flights / percentage of flights subject to delays due to ATFM measures  
**Trend column** The percentages show the changes compared to the corresponding period last year.

### ATFM delay per flight (Data Source: NM statistics)

Average ATFM delay per flight in minutes attributable to national FMP's



\*caused by ATC  
(source: DFS OC/FC, based on FMP reports)

## ATFM delay as a result of ATFM measures

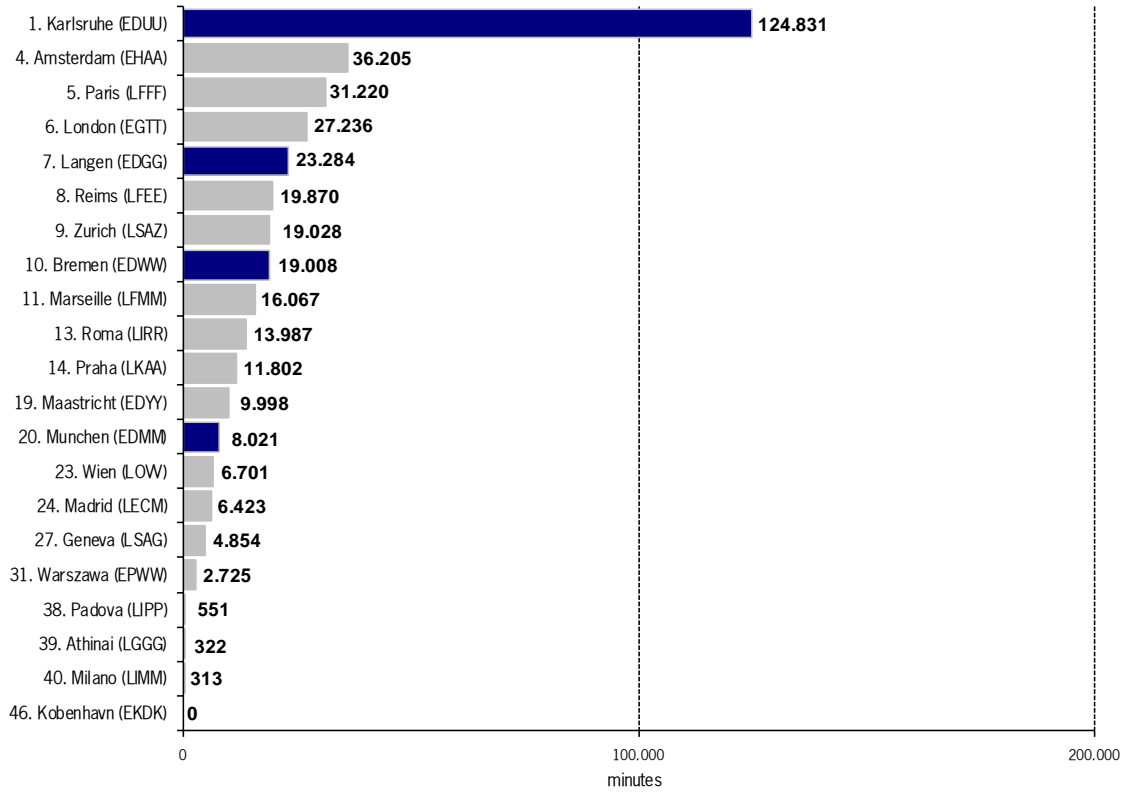
(Data source: NM statistics)

ATFM delay in minutes as a result of ATFM measures of selected European FMPs.

*ATFM delay:*

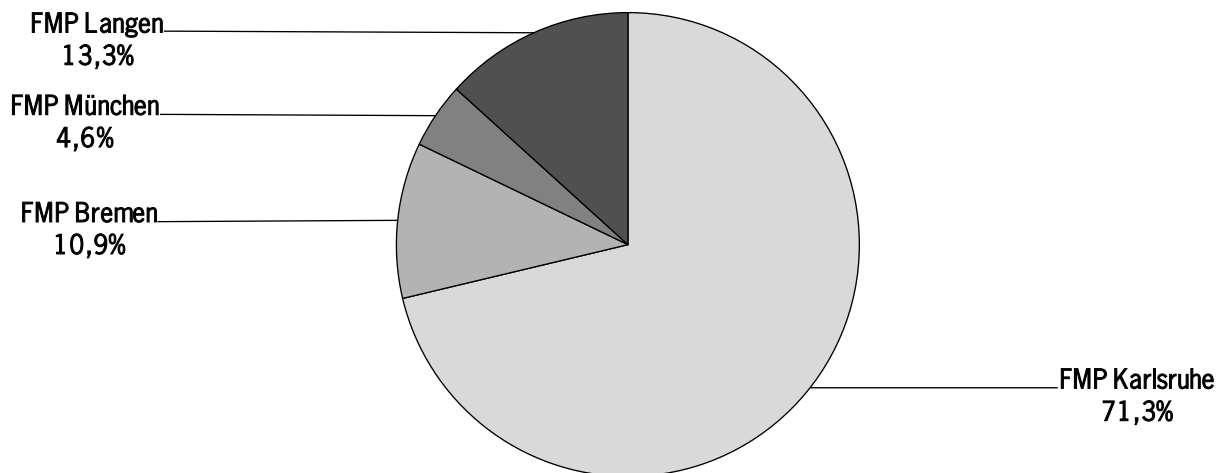
*Time difference between estimated take-off time (ETOT) and calculated take-off time (CTOT) of the NM*

**Percentage of German FMPs: 29,5% = 175.144 minutes of total delay of 593.012 minutes**

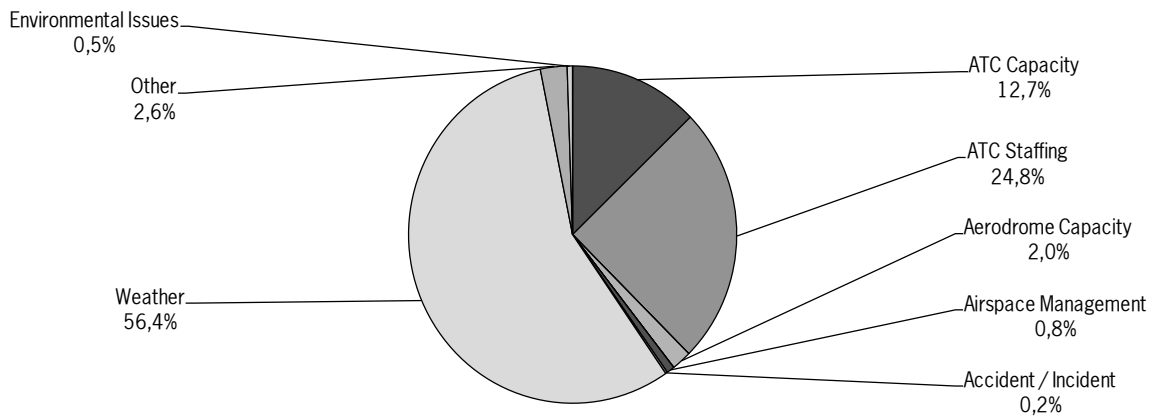


## Percentage of German ATFM delay attributable to different FMPs

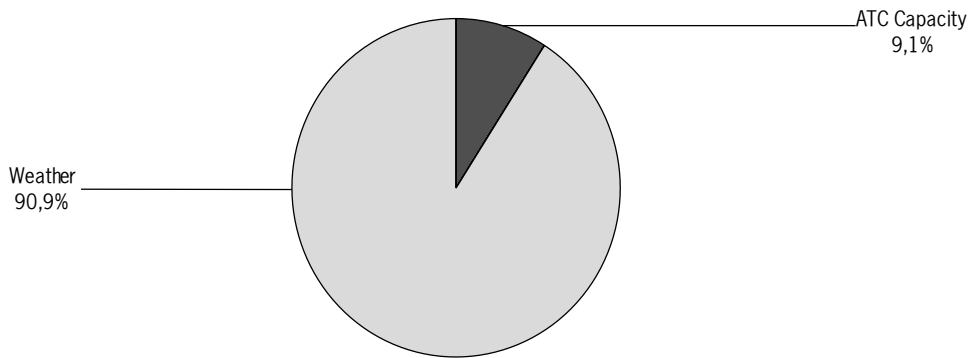
(Data Source: DFS CC-FC, based on FMP reports)



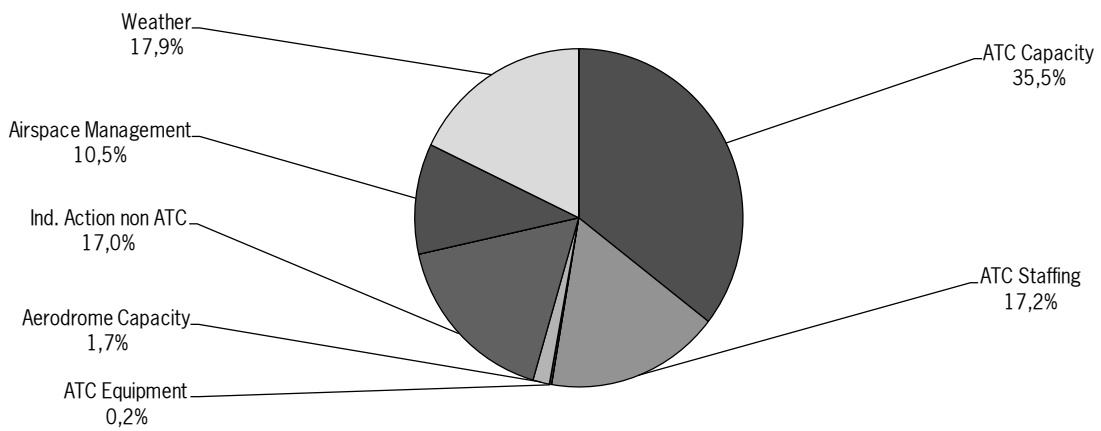
**FMP  
Langen**



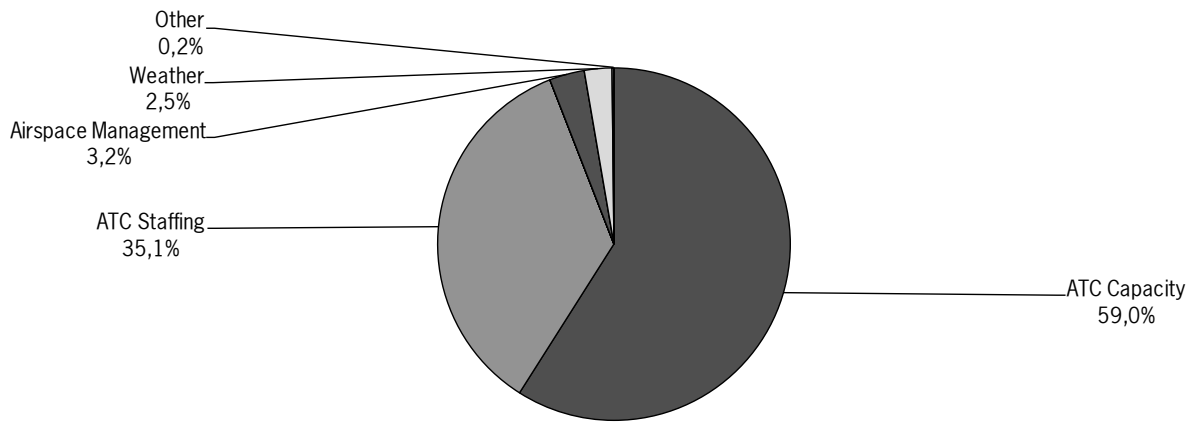
**FMP  
München**



**FMP  
Bremen**

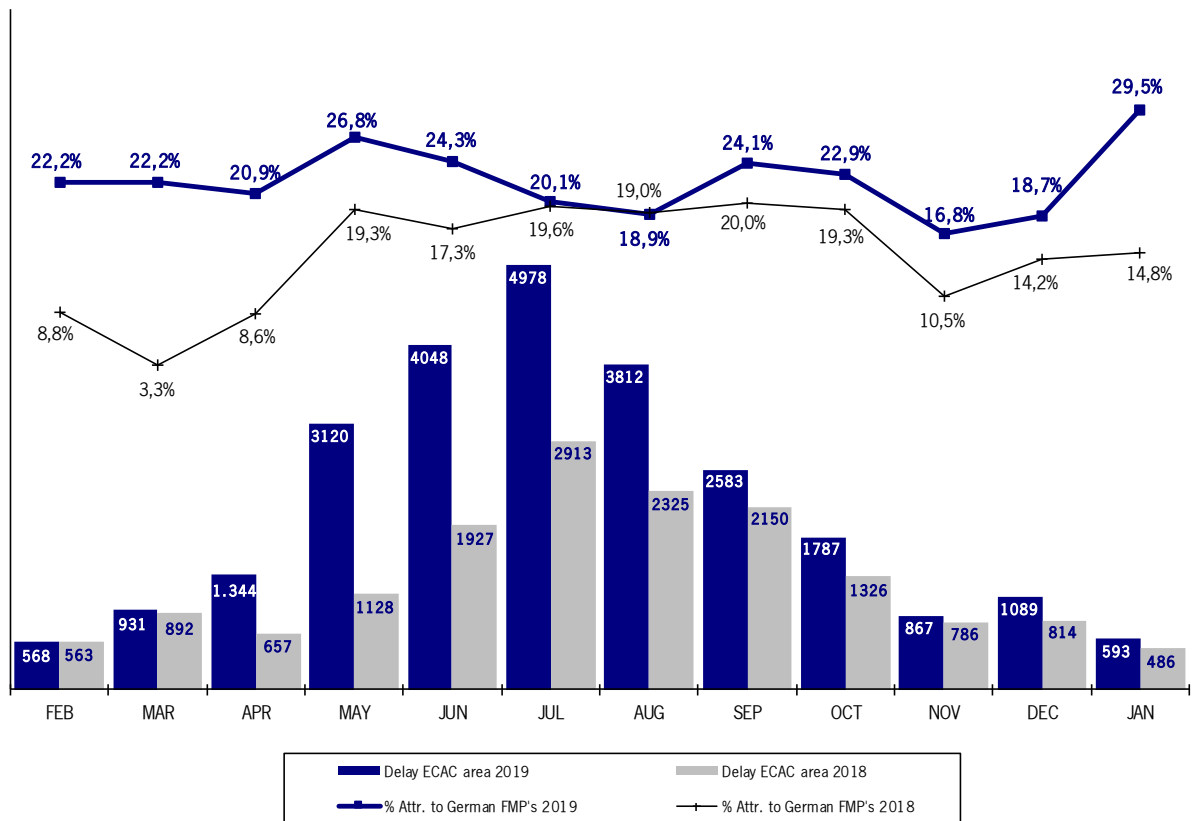


FMP  
Karlsruhe



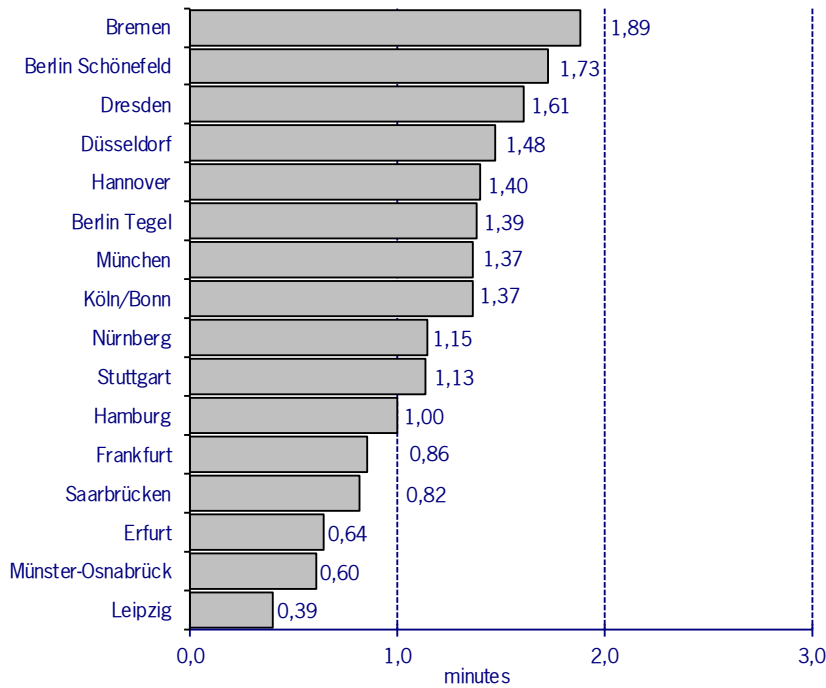
**Development and share of ATFM delays attributable to German FMP's**  
(Data source: NM statistics)

ATFM delays (in thousands of minutes) and percentages of ATFM delays attributable to ATFM measures.



### ATFM departure delays at international German airports

(Data Source: NM statistics)



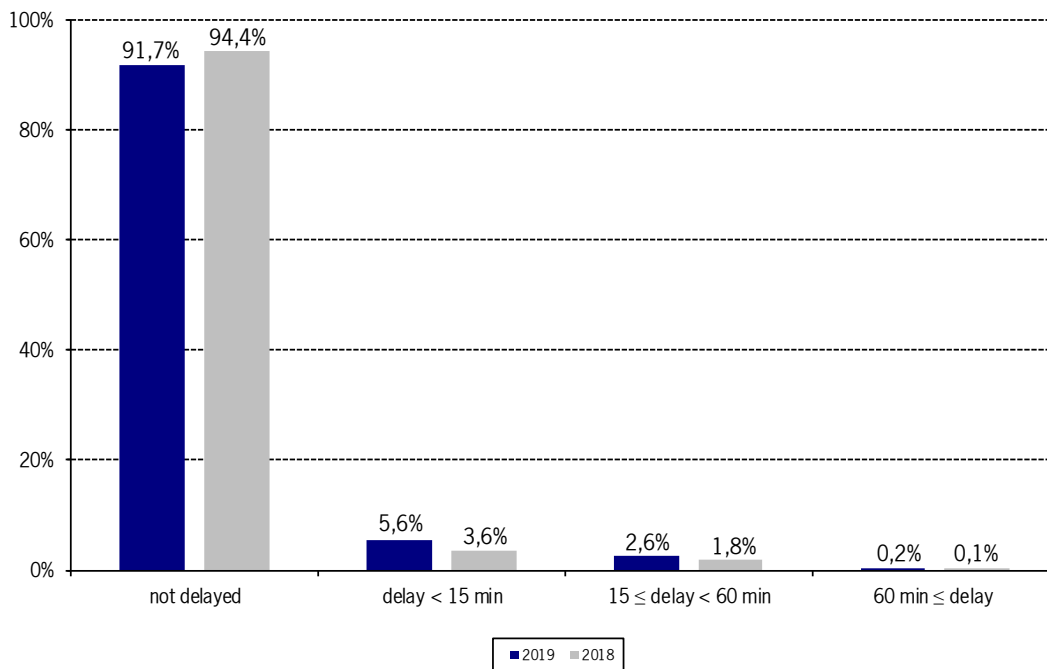
Average ATFM delays in minutes for departures from international German airports following ATFM measures of European FMP's.

**German airports:**  
15,8% = 93.453 minutes of the total delay of 593.012 minutes

### ATFM departure delays at international German airports

(Data source: NM statistics)

Percentage of ATFM delays for flights departing from international German airports attributable to ATFM measures in categories. The delays are distributed in 3 categories.



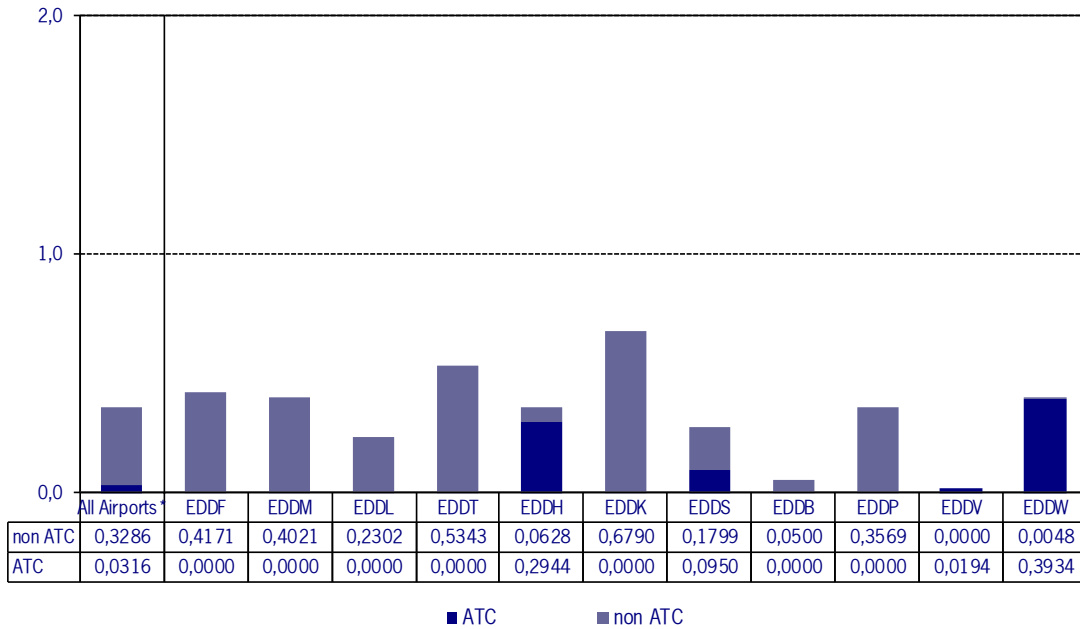
**ATFM Arrival Delay**  
(Data Source: NM statistics, DFS LIZ)

ATFM Arrival Delay with reference to the relevant Airport, in minutes per IFR Arrival.

*ATFM Arrival Delay:*

*sum of all arrival ATFM delay divided by the sum of all inbound flights for the particular traffic volume*

**ATFM Arrival Delay**



Please note: The ATFM delay data are provided by NM statistics. Due to internal distribution of the ATFM delay, data are modified by CC/FC and TWR/M. The inbound flight information is based on LIZ statistics.

\* All Airports means all international German Airports  
 Berlin Schönefeld (EDDB), Berlin Tegel (EDDT), Bremen (EDDW), Dresden (EDDC), Düsseldorf (EDDL), Erfurt (EDDE), Frankfurt (EDDF), Hamburg (EDDH), Hannover (EDDV), Köln/Bonn (EDDK), Leipzig (EDDP), München (EDDM), Münster-Osnabrück (EDDG), Nürnberg (EDDN), Saarbrücken (EDDR), Stuttgart (EDDS)