



DFS Deutsche Flugsicherung

LIZ

Situation and Information Centre

ATFM delay report

January 2018

Air Traffic Flow Management (ATFM) delay ATFM measures in Europe (Data source: NM statistics)

	January 2018		January 2017		Trend 18/17
Total flights	766.330		731.128		4,8%
Regulated flights	56.118	7,3%	54.595	7,5%	2,8%
Delayed flights	28.485	3,7%	31.864	4,4%	-10,6%

Total flights

Number of flight plans having been activated in the EUROCONTROL NM TACT system

Regulated flights

Number of flights / percentage of flights with SLOT allocation (with & without delay)

Delayed flight

Number of flights / percentage of flights subject to delays due to ATFM measures

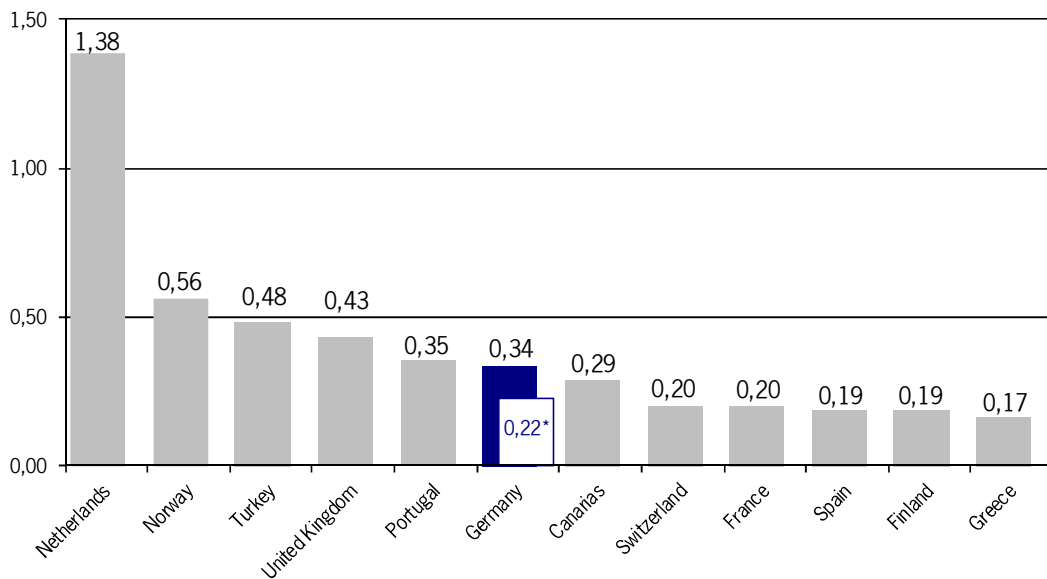
Trend column

The percentages show the changes compared to the corresponding period last year.

ATFM delay per flight

(Data Source: NM statistics)

Average ATFM delay per flight in minutes attributable to national FMP's



*caused by ATC
(source: DFS OC/FC, based on RMP reports)

ATFM delay as a result of ATFM measures

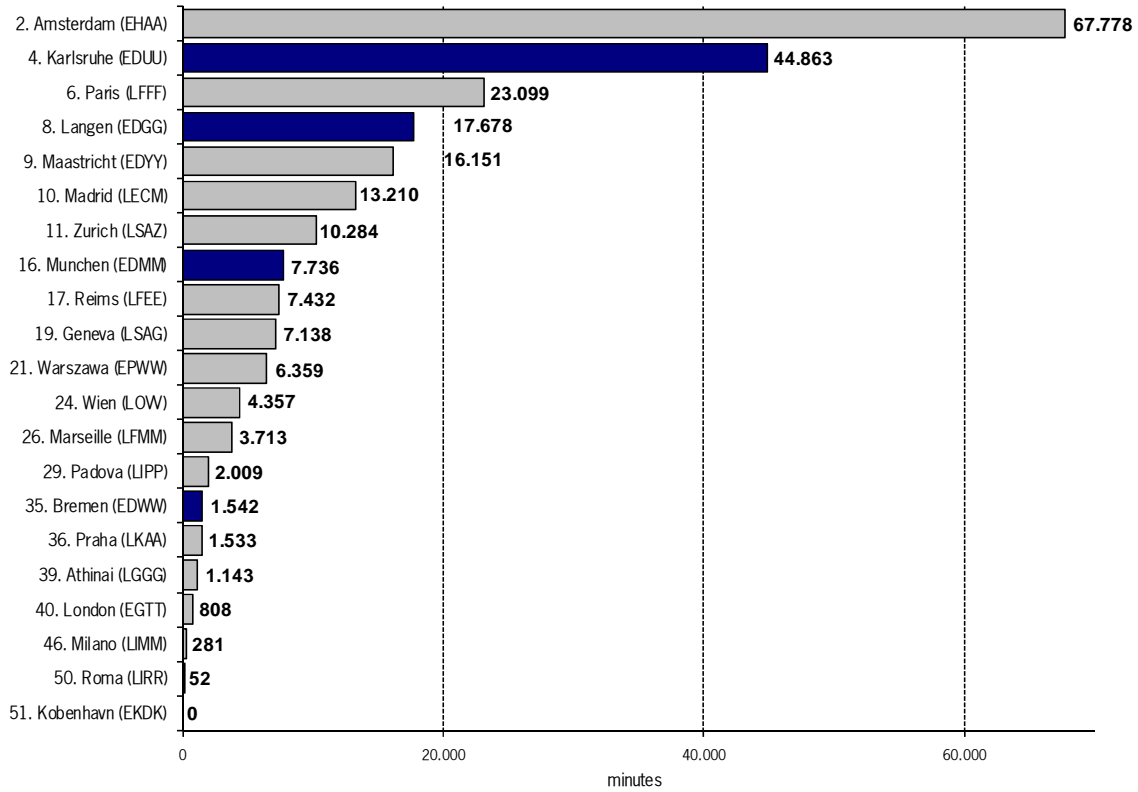
(Data source: NM statistics)

ATFM delay in minutes as a result of ATFM measures of selected European FMPs.

ATFM delay:

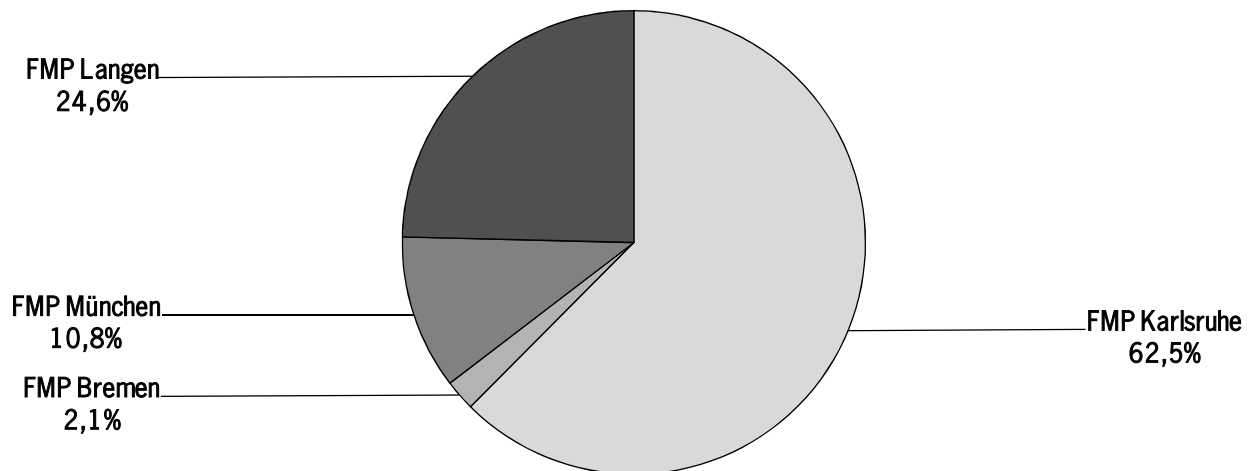
Time difference between estimated take-off time (ETOT) and calculated take-off time (CTOT) of the NM

Percentage of German FMPs: 14,8% = 71.819 minutes of total delay of 486.387 minutes

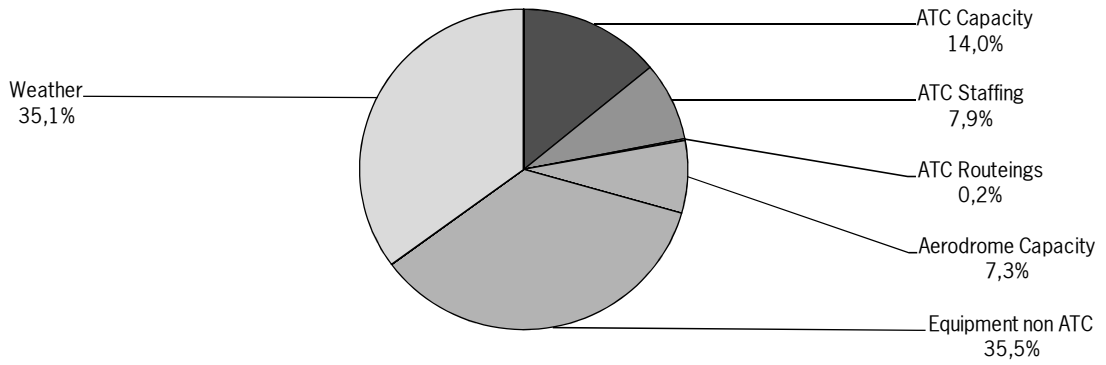


Percentage of German ATFM delay attributable to different FMPs

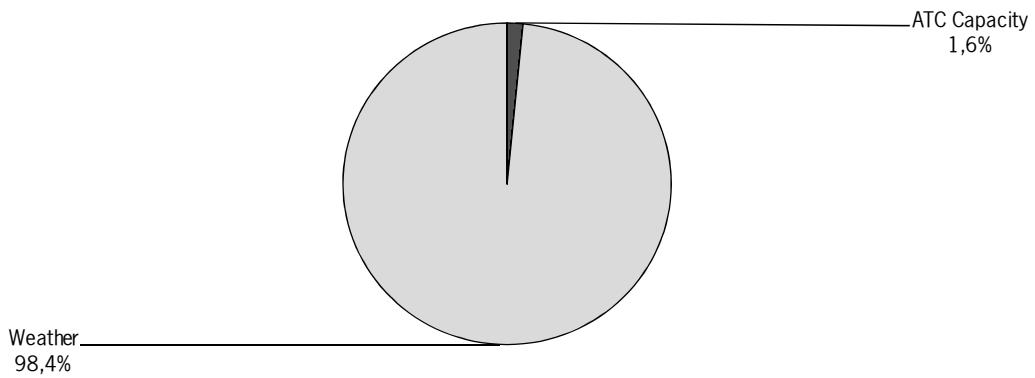
(Data Source: DFS CC-FC, based on FMP reports)



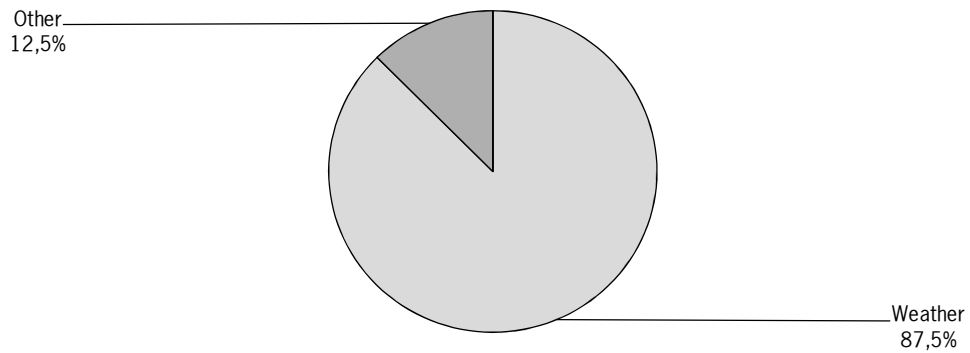
FMP
Langen



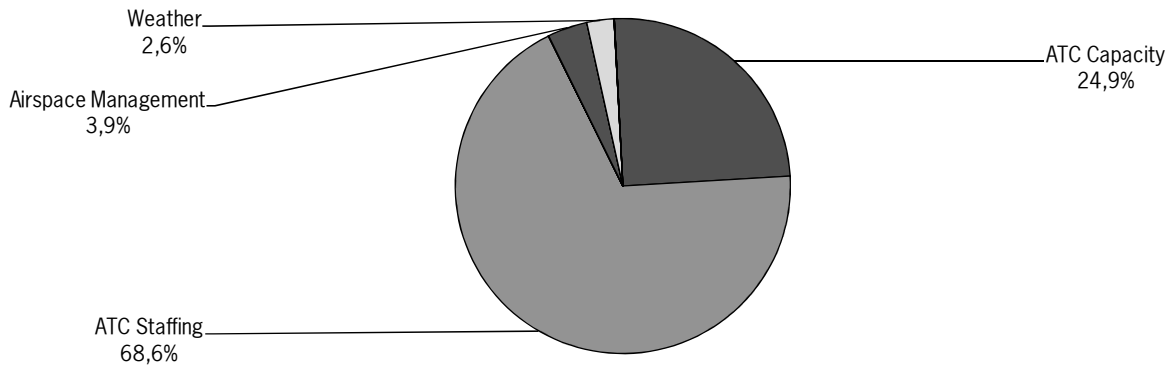
FMP
München



FMP
Bremen

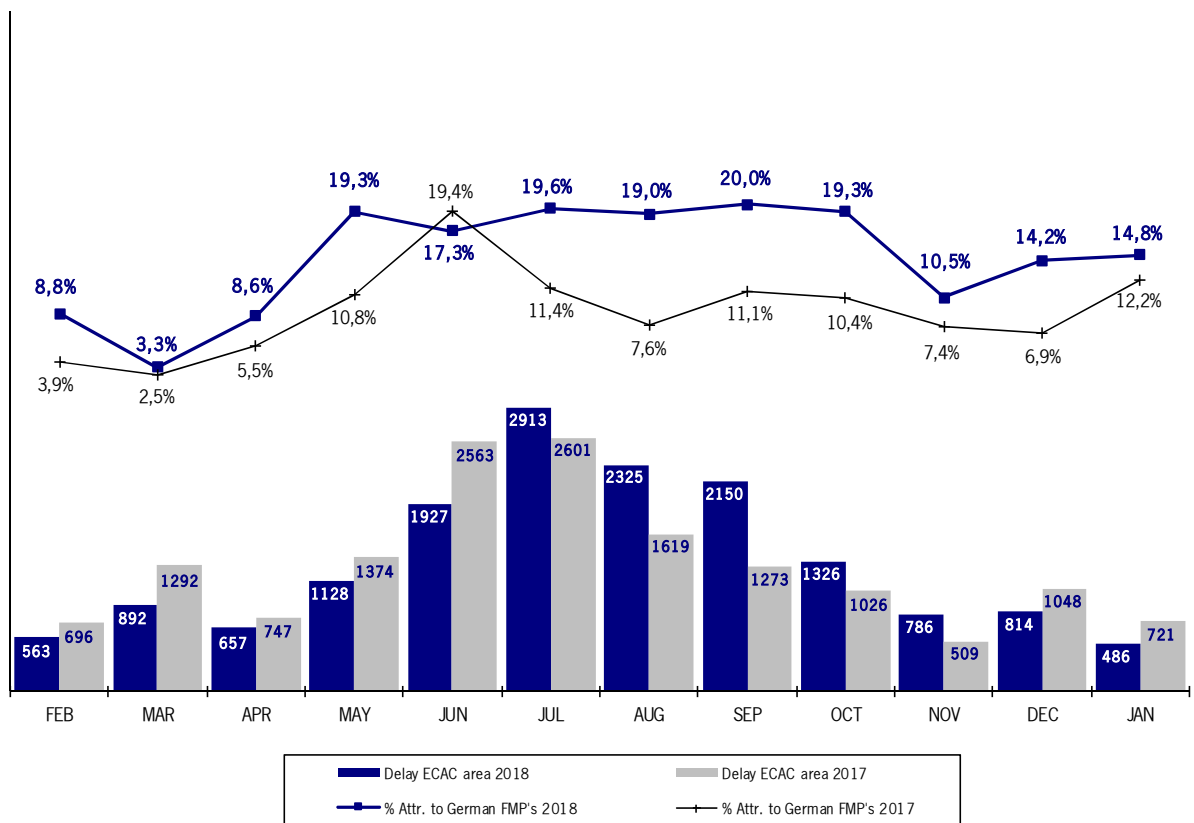


**FMP
Karlsruhe**



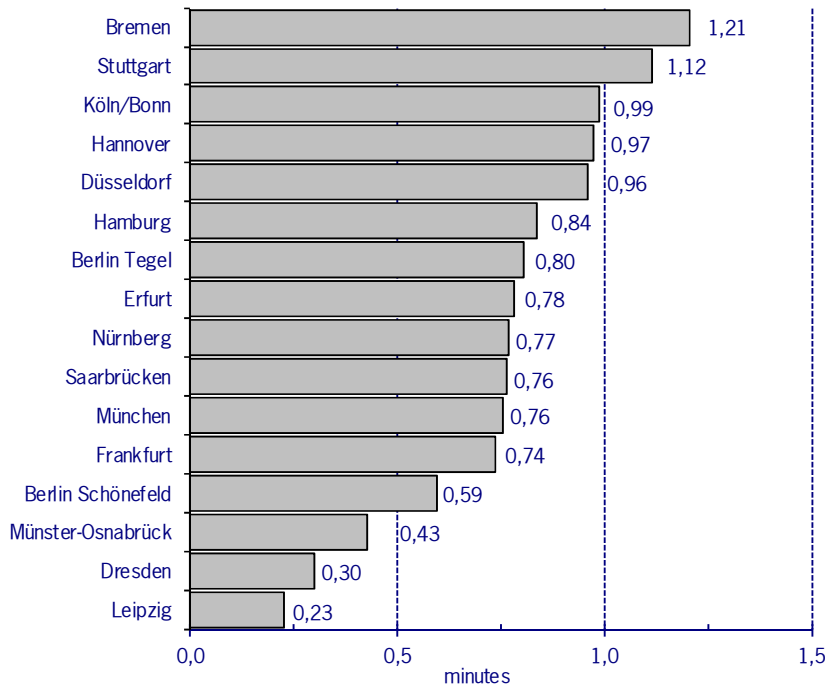
Development and share of ATFM delays attributable to German FMP's
(Data source: NM statistics)

ATFM delays (in thousands of minutes) and percentages of ATFM delays attributable to ATFM measures.



ATFM departure delays at international German airports

(Data Source: NM statistics)



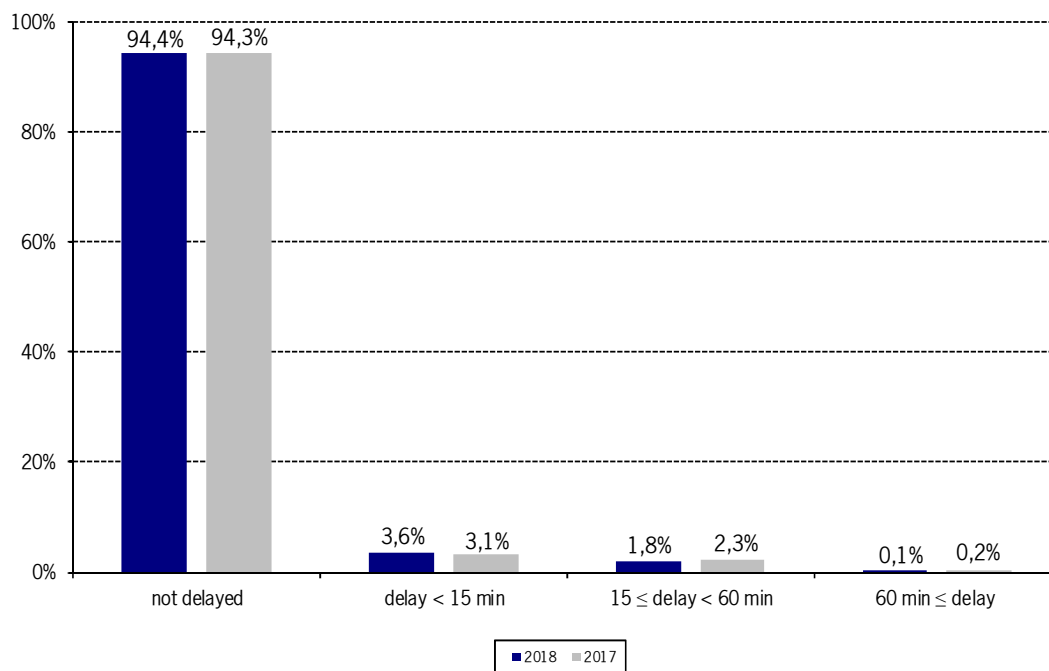
Average ATFM delays in minutes for departures from international German airports following ATFM measures of European FMP's.

German airports:
12,1% = 58.661 minutes of the total delay of 486.387 minutes

ATFM departure delays at international German airports

(Data source: NM statistics)

Percentage of ATFM delays for flights departing from international German airports attributable to ATFM measures in categories. The delays are distributed in 3 categories.



ATFM Arrival Delay

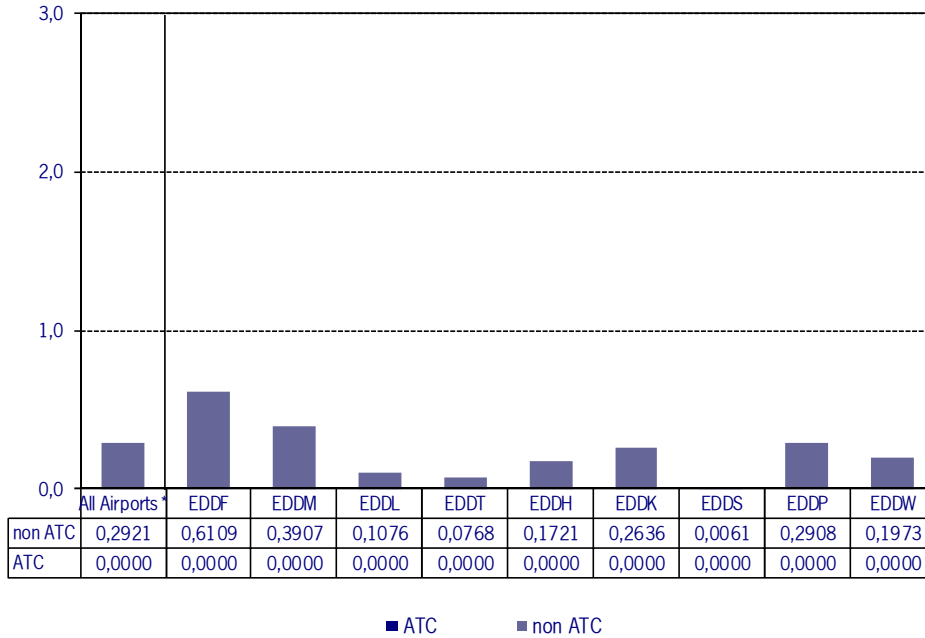
(Data Source: NM statistics, DFS LIZ)

ATFM Arrival Delay with reference to the relevant Airport, in minutes per IFR Arrival.

ATFM Arrival Delay:

sum of all arrival ATFM delay divided by the sum of all inbound flights for the particular traffic volume

ATFM Arrival Delay



Please note: The ATFM delay data are provided by NM statistics. Due to internal distribution of the ATFM delay, data are modified by CC/FC and TWR/M. The inbound flight information is based on LIZ statistics.

* All Airports means all international German Airports

Berlin Schönefeld (EDDB), Berlin Tegel (EDDT), Bremen (EDDW), Dresden (EDDC), Düsseldorf (EDDL), Erfurt (EDDE), Frankfurt (EDDF), Hamburg (EDDH), Hannover (EDDV), Köln/Bonn (EDDK), Leipzig (EDDP), München (EDDM), Münster-Osnabrück (EDDG), Nürnberg (EDDN), Saarbrücken (EDDR), Stuttgart (EDDS)