



DFS Deutsche Flugsicherung

LIZ Bu

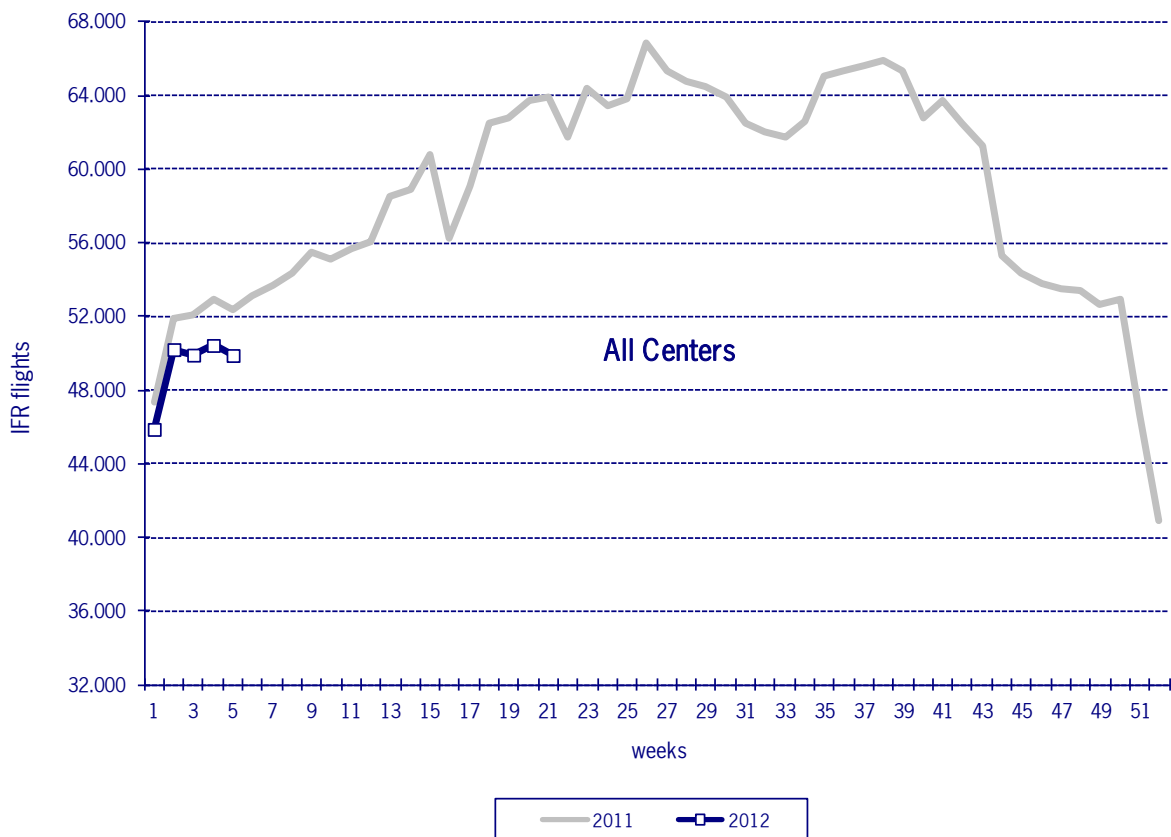
LIZ Bulletin
Situation and Information Centre

05th Calendar Week
30.01.2012 - 05.02.2012

IFR flights in the Federal Republic of Germany

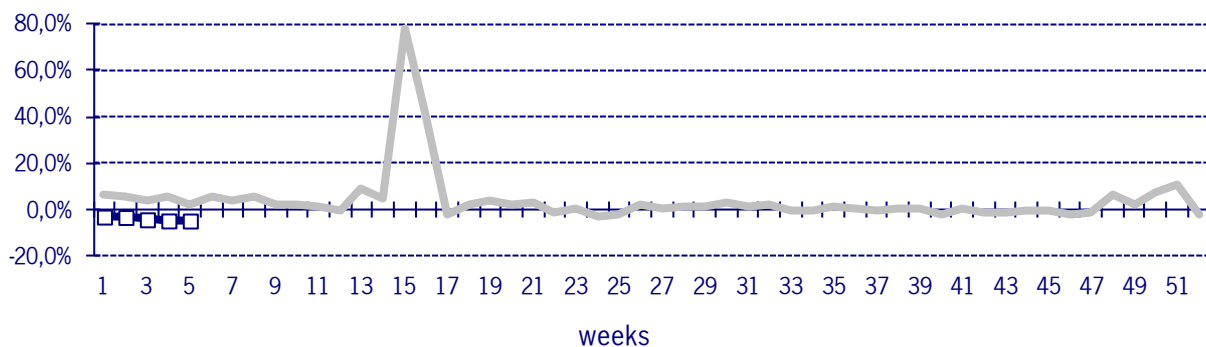
IFR flights in the Federal Republic of Germany (all centers and the Maastricht-Hanover sectors) and changes in comparison to the corresponding period last year.

	2012	2011	Trend
Week 05	49.898	52.372	-4,7%
Cumulated Weeks	246.362	256.592	-4,0%



Development of changes

The graphic below shows the development of changes of the number of IFR movements in comparison to the number of the corresponding week in the previous year.

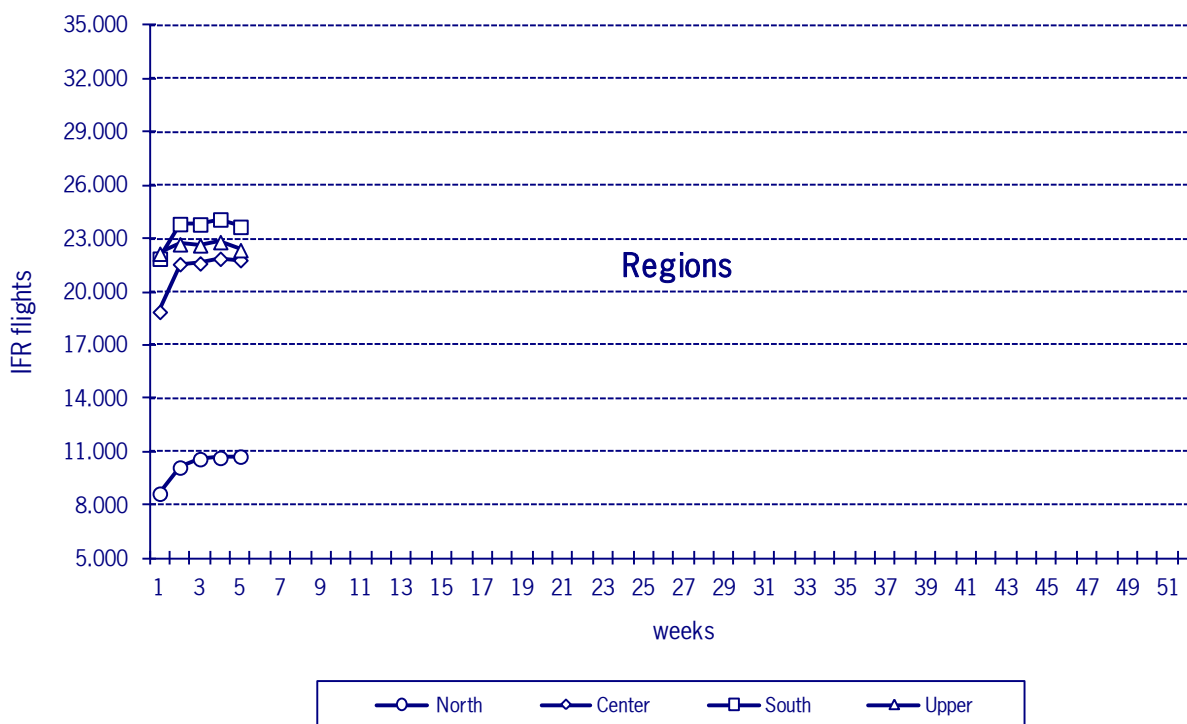


IFR flights in the centers in 2012

The figures show the number of IFR flights handled by the regional Air Navigation Services Units of DFS in the current week respectively the sum of all weeks this year.

	NORTH	CENTER	SOUTH	UPPER
Week 05	10.724	21.794	23.672	22.358
Trend	-2,4%	-5,3%	-6,2%	-1,6%
Cumulated Weeks	50.694	105.713	117.271	112.647
Trend	-4,5%	-5,3%	-4,9%	0,5%

Please note: For the Center Upper / Hanover sectors only military flights are counted.
The trend numbers compare counts of the air spaces in their current configuration to count of the same airspaces in 2011.



**IFR take-offs and landings at international German airports
week 01 - 05 in 2012**

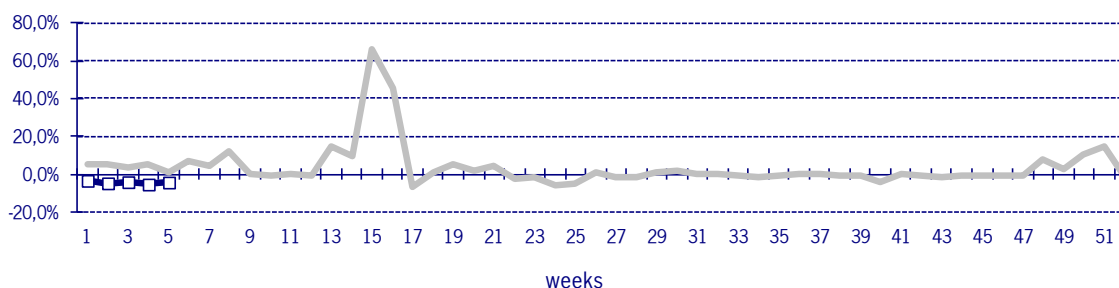
IFR take-offs and landings at the international German airports and changes in comparison to the corresponding period last year.

	2012	2011	Trend
Week 05	35.473	37.070	-4,3%
Cumulated Weeks	169.245	177.078	-4,4%



Development of changes

The graphic below shows the development of changes of the number of IFR take-offs and landings in comparison to the number of the corresponding week in the previous year.



IFR take-offs and landings differentiated by type of airport

The figures show the number of IFR take-offs and landings differentiated by Intercontinental Hub Gateway (IHG), International Access Airport, Category 1 (IAA1) and International Access Airport, Category 2 (IAA2). The trend shows the changes compared to the corresponding period last year.

	IHG	IAA1	IAA2
Week 05	16.034	15.448	3.991
Trend	-3,4%	-5,2%	-4,4%
Cumulated Weeks	77.528	72.663	19.054
Trend	-2,2%	-5,7%	-8,4%

IFR take-offs and landings at international airports

The trend shows the changes compared to the corresponding period last year.

Week 05	Trend
---------	-------

Week 01 - 05	Trend
--------------	-------

IHG

EDDF	8.610	-3,2%
EDDM	7.424	-3,6%

42.823	-0,5%
34.705	-4,2%

IAA1

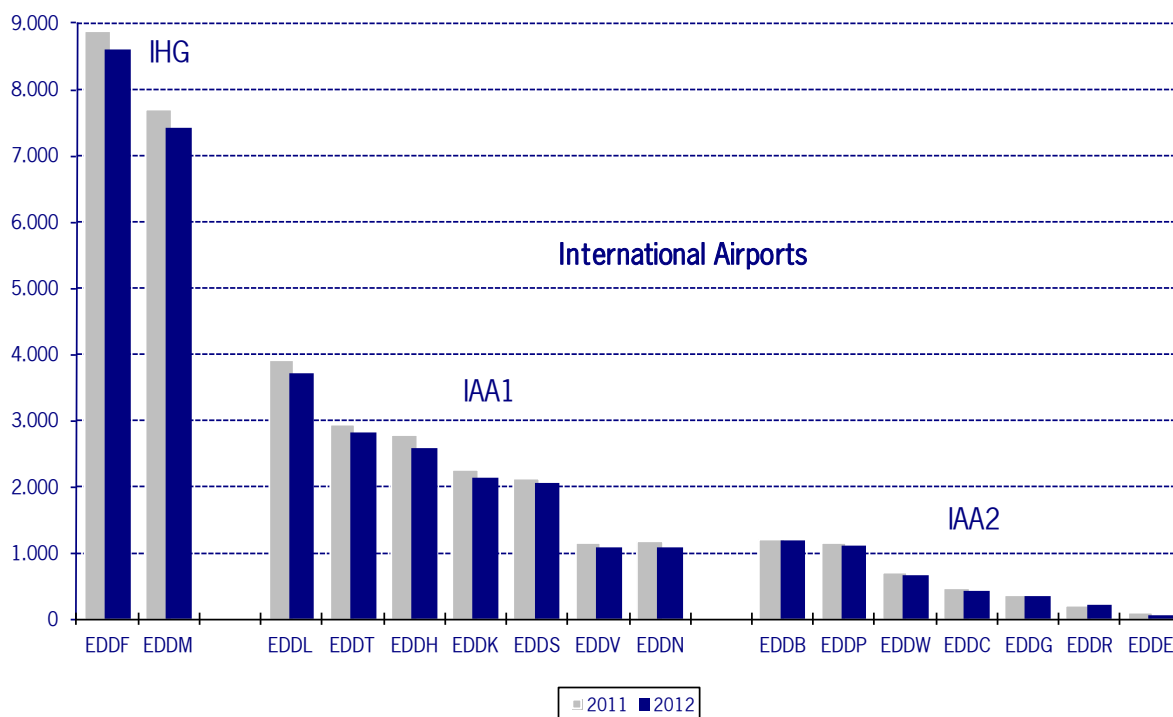
EDDH	2.589	-6,6%
EDDK	2.119	-6,1%
EDDL	3.721	-4,8%
EDDN	1.072	-7,7%
EDDS	2.060	-2,9%
EDDT	2.806	-4,5%
EDDV	1.081	-4,8%

12.081	-6,3%
10.073	-6,8%
17.444	-5,3%
4.723	-10,8%
9.687	-3,5%
13.348	-4,3%
5.307	-5,6%

IAA2

EDDB	1.192	-1,2%
EDDC	424	-8,2%
EDDE	55	-39,6%
EDDG	347	-4,7%
EDDP	1.110	-3,1%
EDDR	207	5,1%
EDDW	656	-7,5%

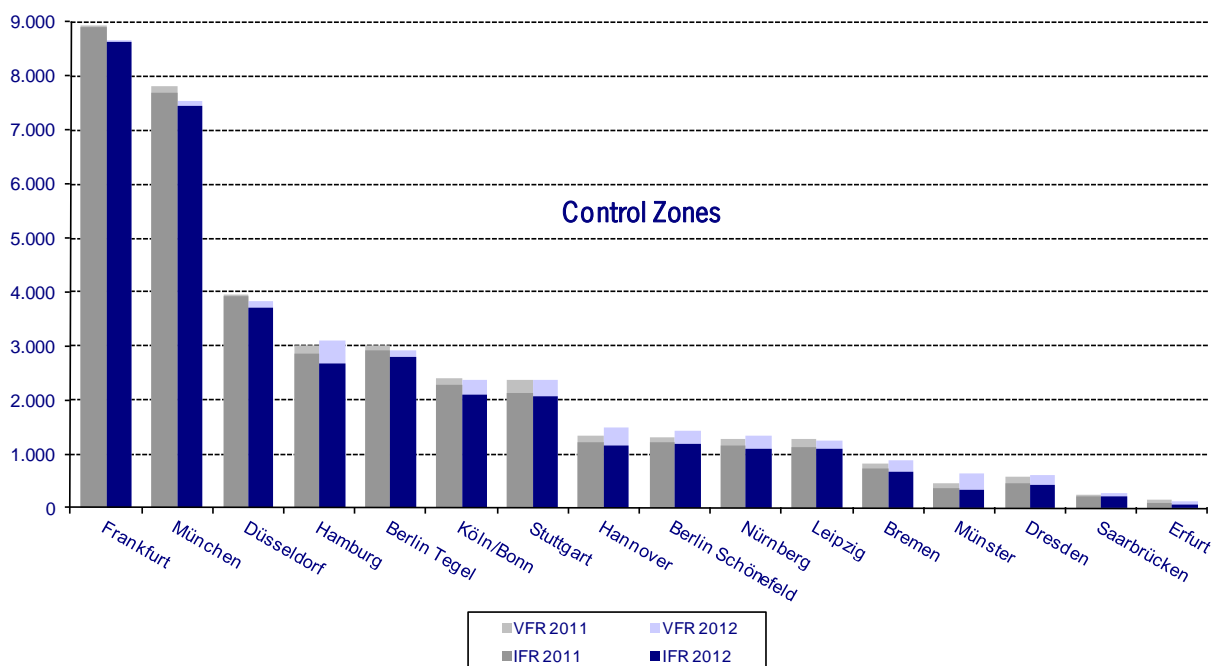
5.963	-5,6%
2.047	-9,4%
253	-51,1%
1.617	-11,8%
5.319	-3,4%
837	-16,5%
3.018	-10,7%



**All Movements in Control Zones of DFS Tower branch offices
Entries, exits, locals and overflights**

The trend shows the changes compared to the corresponding period last year.

	Week 05	Trend	Week 01 - 05	Trend
Berlin Schönefeld	1.417	9,3%	6.925	-3,1%
Berlin Tegel	2.922	-2,9%	13.883	-3,5%
Bremen	888	6,3%	3.794	-6,3%
Dresden	593	3,3%	2.624	-10,4%
Düsseldorf	3.819	-3,7%	17.951	-5,6%
Erfurt	127	-17,0%	700	-23,6%
Frankfurt	8.662	-3,2%	43.172	-0,5%
Hamburg	3.097	2,6%	13.927	-2,4%
Hannover	1.496	11,3%	6.816	-0,4%
Köln/Bonn	2.378	-1,1%	10.978	-7,0%
Leipzig	1.247	-3,3%	6.092	-4,2%
München	7.550	-3,4%	35.200	-4,1%
Münster	653	46,1%	2.731	5,5%
Nürnberg	1.334	3,9%	5.605	-7,8%
Saarbrücken	276	8,7%	1.130	-17,5%
Stuttgart	2.375	0,3%	10.809	-4,1%



IFR take-offs and landings at regional German airports in weeks 01 - 05 in 2012

	2012	2011	Trend
Week 05	3.020	3.473	-13,0%
Cumulated Weeks	14.425	17.275	-16,5%

	Week 05	Trend	Week 01 - 05	Trend
EDAC	2	-81,8%	31	-51,6%
EDAH	5	-58,3%	27	-41,3%
EDBC	27	-	135	-
EDFH	424	-18,1%	2.153	-18,2%
EDFM	109	-28,8%	495	-37,7%
EDHL	86	10,3%	357	-5,8%
EDJA	153	-21,5%	725	-9,1%
EDLN	76	-28,3%	407	-17,3%
EDLP	238	11,2%	1.097	-3,4%
EDLV	219	-37,4%	1.203	-36,3%
EDLW	296	-1,0%	1.519	-3,1%
EDMA	104	-7,1%	459	-25,0%
EDNY	251	-4,2%	1.159	-3,6%
EDOP	28	-15,2%	135	-30,8%
EDQM	27	-44,9%	135	-47,5%
EDRZ	69	-40,0%	305	-41,9%
EDSB	247	-13,3%	1.240	-12,1%
EDTL	52	8,3%	183	-9,4%
EDVE	217	2,8%	928	-0,6%
EDVK	55	7,8%	211	3,9%
EDXW	36	38,5%	208	6,1%
ETNL	139	-7,9%	659	-20,8%
ETNU	46	-24,6%	188	-48,4%
ETSI	114	-11,6%	466	-11,4%

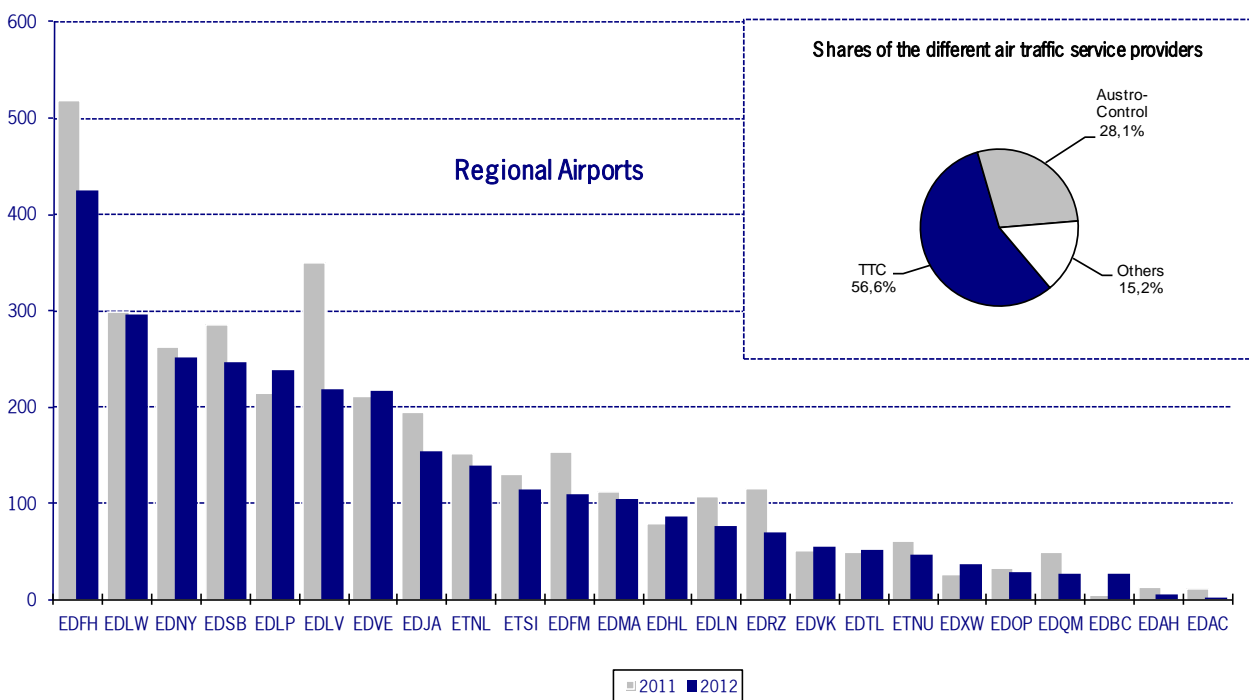
Please note: Only flights arriving or departing via German Airspace are taken into account.

TTC: Altenburg-Nobitz (EDAC), Dortmund (EDLW), Hahn (EDFH), Karlsruhe-Baden (EDSB), Magdeburg/Cochstedt (EDBC), Memmingen (EDJA), Mönchengladbach (EDLN), Niederrhein (EDLV), Paderborn (EDLP), Schwerin (EDOP)

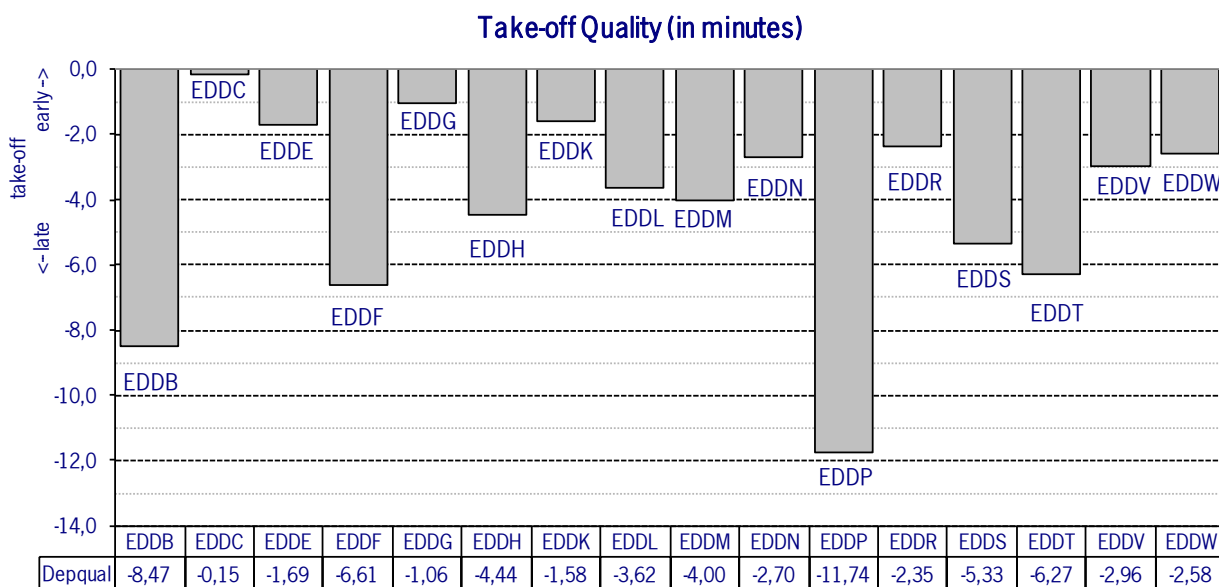
Austro-Control: Augsburg (EDMA), Braunschweig (EDVE), Friedrichshafen (EDNY), Heringsdorf (EDAH), Hof (EDQM), Kassel (EDVK), Lübeck (EDHL), Westerland (EDXW), Zweibrücken (EDRZ)

Others: Ingolstadt (ETSI), Laage (ETNL), Lahr (EDTL), Mannheim (EDFM), Neubrandenburg (ETNU)

IFR take-offs and landings at regional German airports



Take-off quality at airports where DFS provides air traffic control service and TFDPS or FI@ps data is available
Week 05 in 2012



**New Take-off quality at airports where DFS provides air traffic control service
Week 05 in 2012**

Due to the evolution of airport procedures some variables for Take-Off Quality calculation have to be adapted. Therefore the Business Unit Tower has developed a new method of calculation which also includes a quality factor specific to every airport. This method will be under evaluation.

