



DFS Deutsche Flugsicherung

LIZ

Situation and
Information
Centre

Annual ATFM delay report

2011

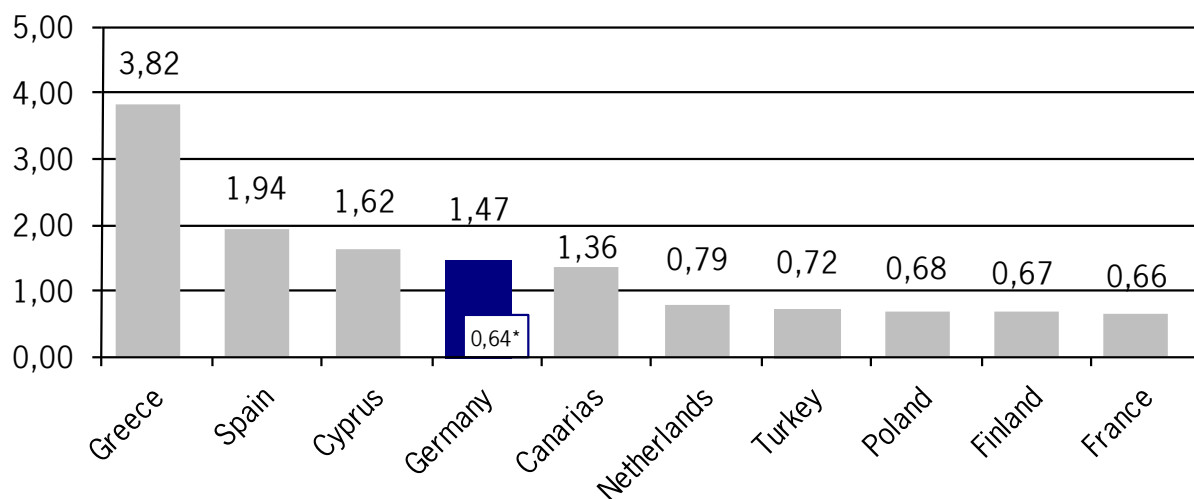
Air Traffic Flow Management Delay (ATFM) ATFM measures in Europe (Source: CFMU statistics)

	2011		2010		Trend 10/11
Total Flights	9.856.762		9.610.200		2,6%
Regulated Flights	1.376.994	14,0%	1.825.238	19,0%	-24,6%
Delayed Flights	845.231	8,6%	1.154.115	12,0%	-26,8%

Total Flights Number of flight plans having been activated in the EUROCONTROL CFMU TACT-System.
Regulated Flights Number of flights / percentage of flights with SLOT allocation (with & without delay).
Delayed Flight Number of flights / percentage of flights subject to delays due to ATFM measures.
Trend Column The percentages show the changes compared to the corresponding period last year.

ATFM-Delay per flight

Average ATFM delay per flight in minutes attributable to national FMPs.



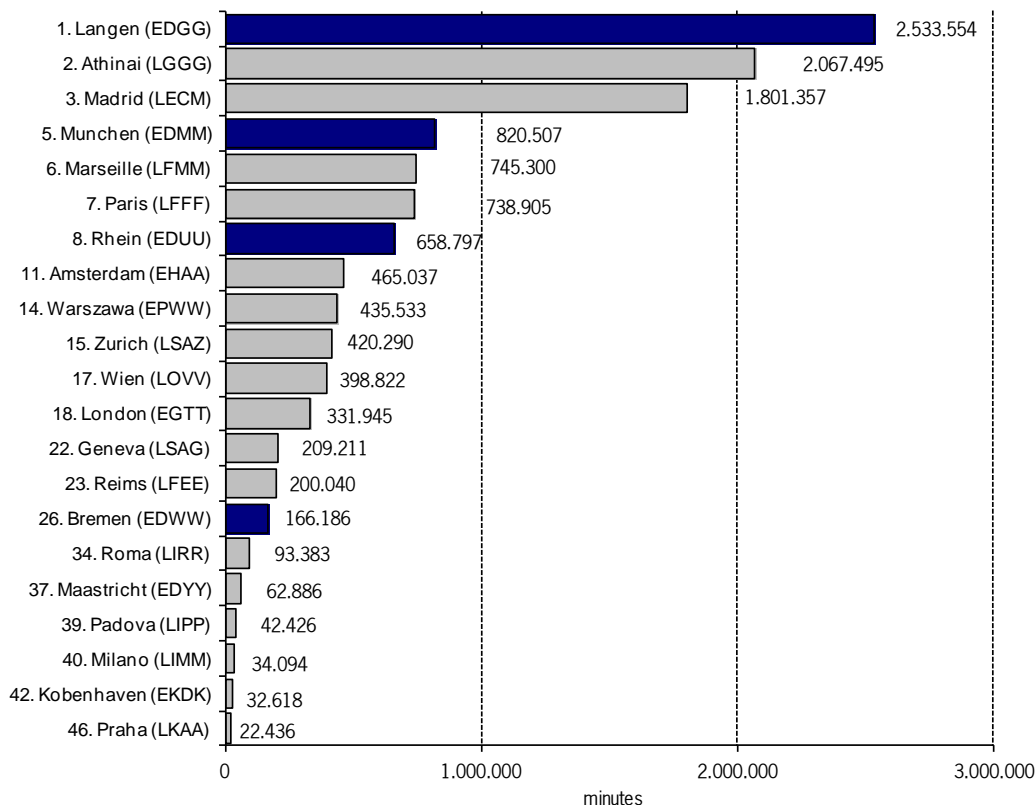
* caused by ATC
(source: DFS CC/FC, based on FMP reports)

ATFM Delay as a result of ATFM measures

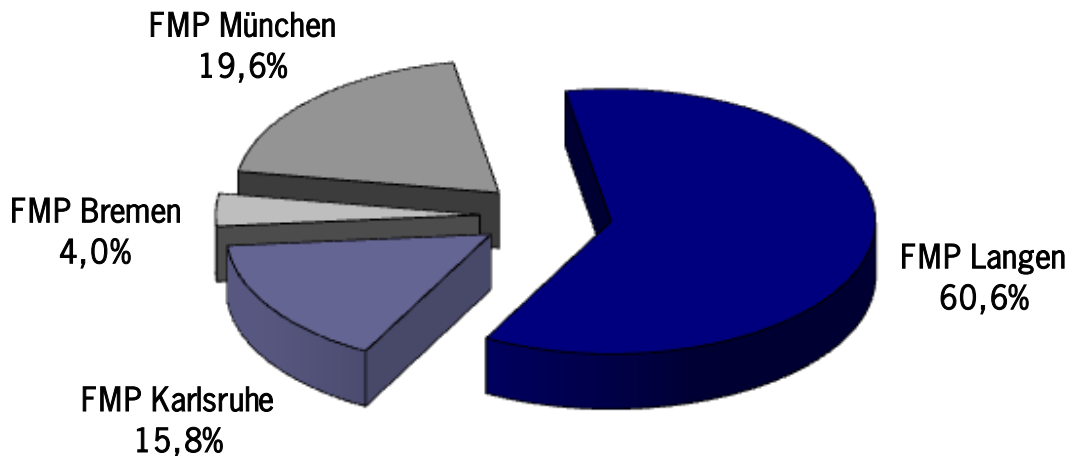
ATFM Delay in minutes as a result of ATFM measures of selected European FMPs.

ATFM Delay:
difference in time between estimated take-off time (ETOT) and calculated take-off time (CTOT) of the CFMU.

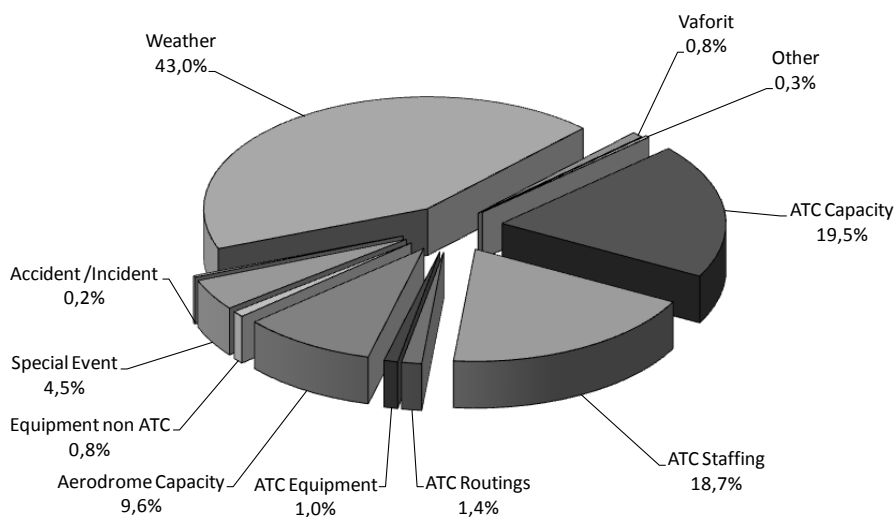
Percentage of German FMPs: 4.179.044 = 23,4% minutes of total delay of minutes 17.835.516



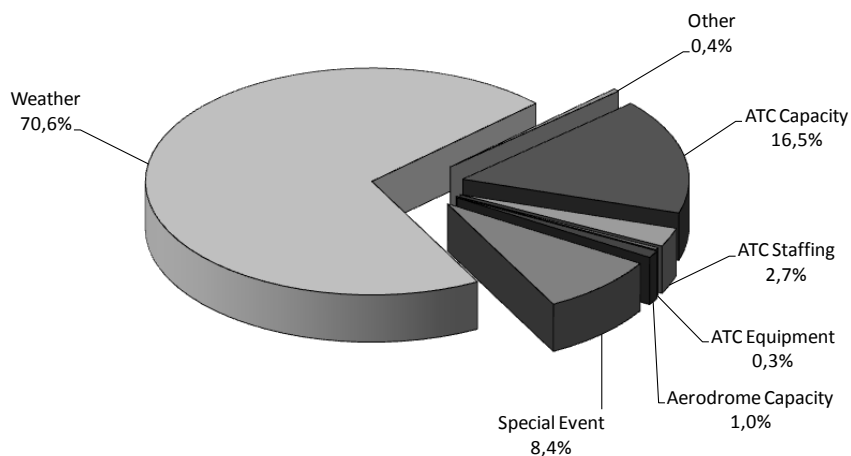
Percentage of German "ATFM delay" attributable to different FMPs
(Source: DFS CC-FC, based on FMP reports)



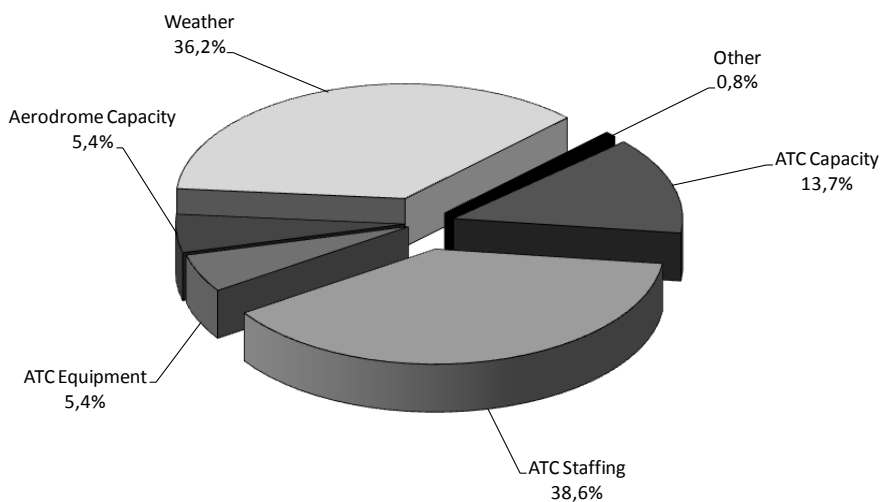
FMP
Langen



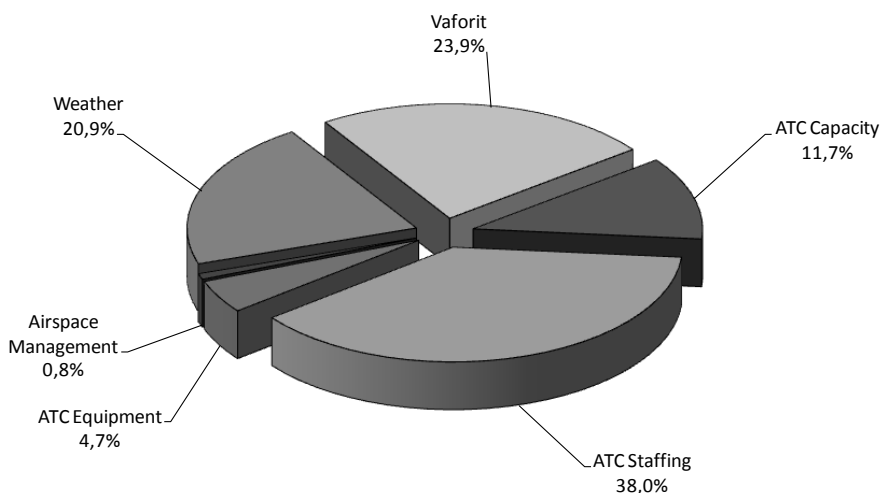
FMP
München



FMP
Bremen

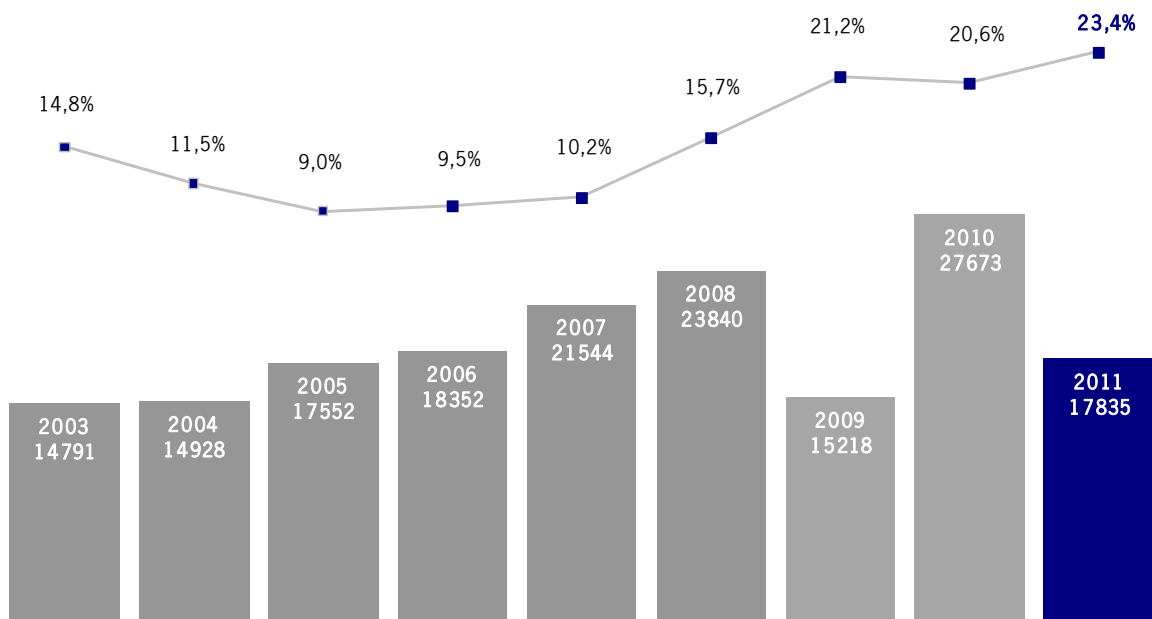


FMP
Karlsruhe

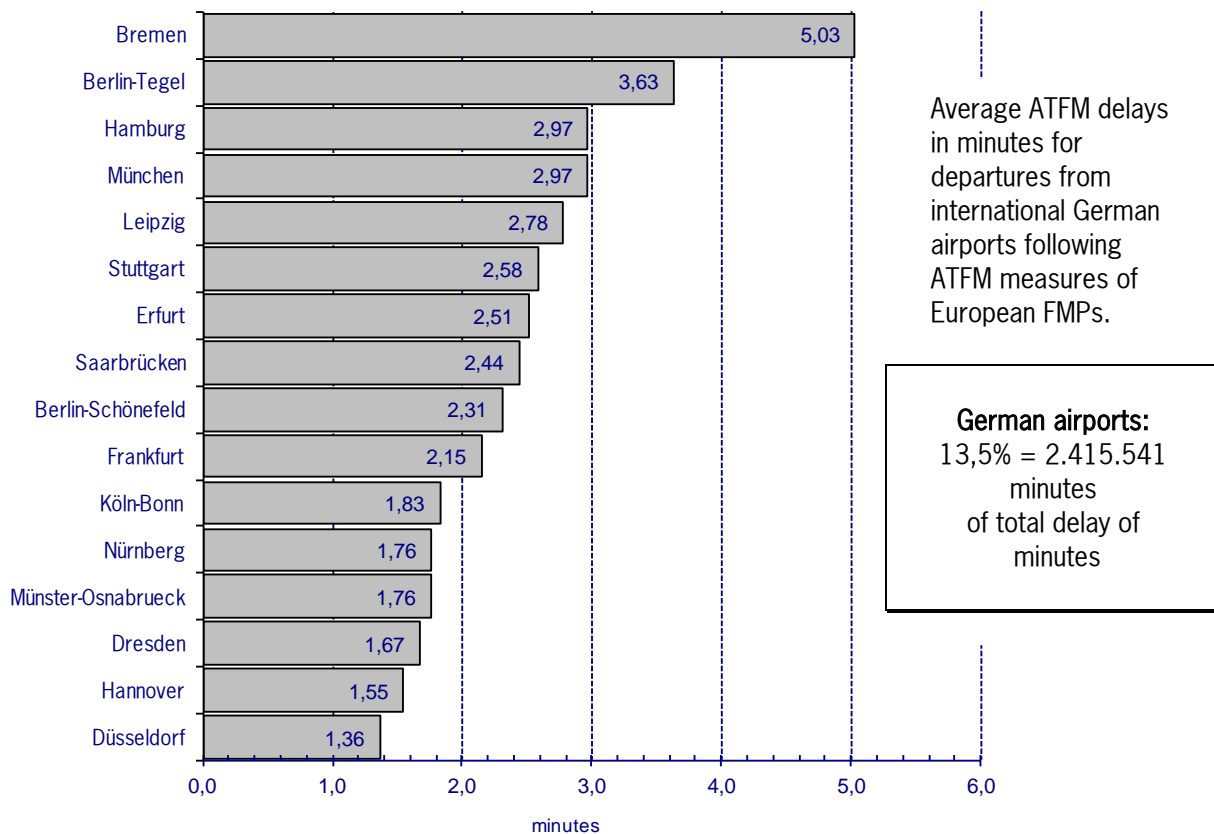


Development and share of "ATFM delays" attributable to German FMPs
(Source: CFMU statistics)

ATFM delay (in thousand minutes) and percentages of ATFM delays attributable to ATFM measures taken by German FMPs.



ATFM departure delay at international German airports



ATFM departure delays at international German airports

Percentage of ATFM delays for flights departing from international German airports attributable to ATFM measures of German FMPs in categories. The delays are distributed in 3 categories.

