



DFS Deutsche Flugsicherung

LIZ

Situation and
Information
Centre

ATFM delay report

September 2011

Air Traffic Flow Management Delay (ATFM) ATFM measures in Europe (Source: CFMU statistics)

	September 2011		September 2010		Trend 10/11
Total Flights	917.663		893.254		2,7%
Regulated Flights	153.824	16,8%	205.989	23,1%	-25,3%
Delayed Flights	99.294	10,8%	127.157	14,2%	-21,9%

Total Flights

Number of flight plans having been activated in the EUROCONTROL CFMU TACT-System.

Regulated Flights

Number of flights / percentage of flights with SLOT allocation (with & without delay).

Delayed Flight

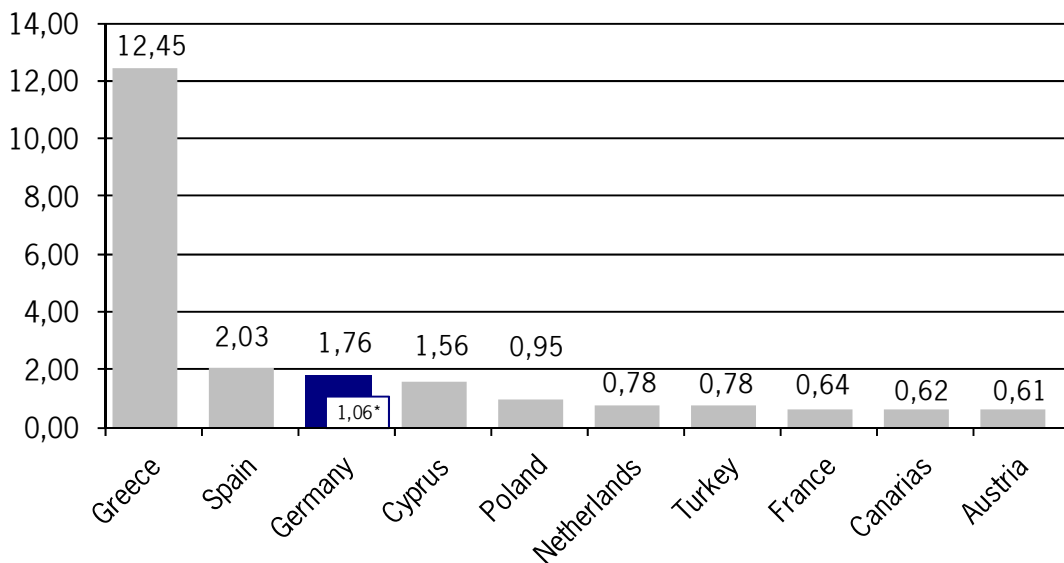
Number of flights / percentage of flights subject to delays due to ATFM measures.

Trend Column

The percentages show the changes compared to the corresponding period last year.

ATFM-Delay per flight

Average ATFM delay per flight in minutes attributable to national FMPs.



* caused by ATC

(source: DFS CC/FC, based on FMP reports)

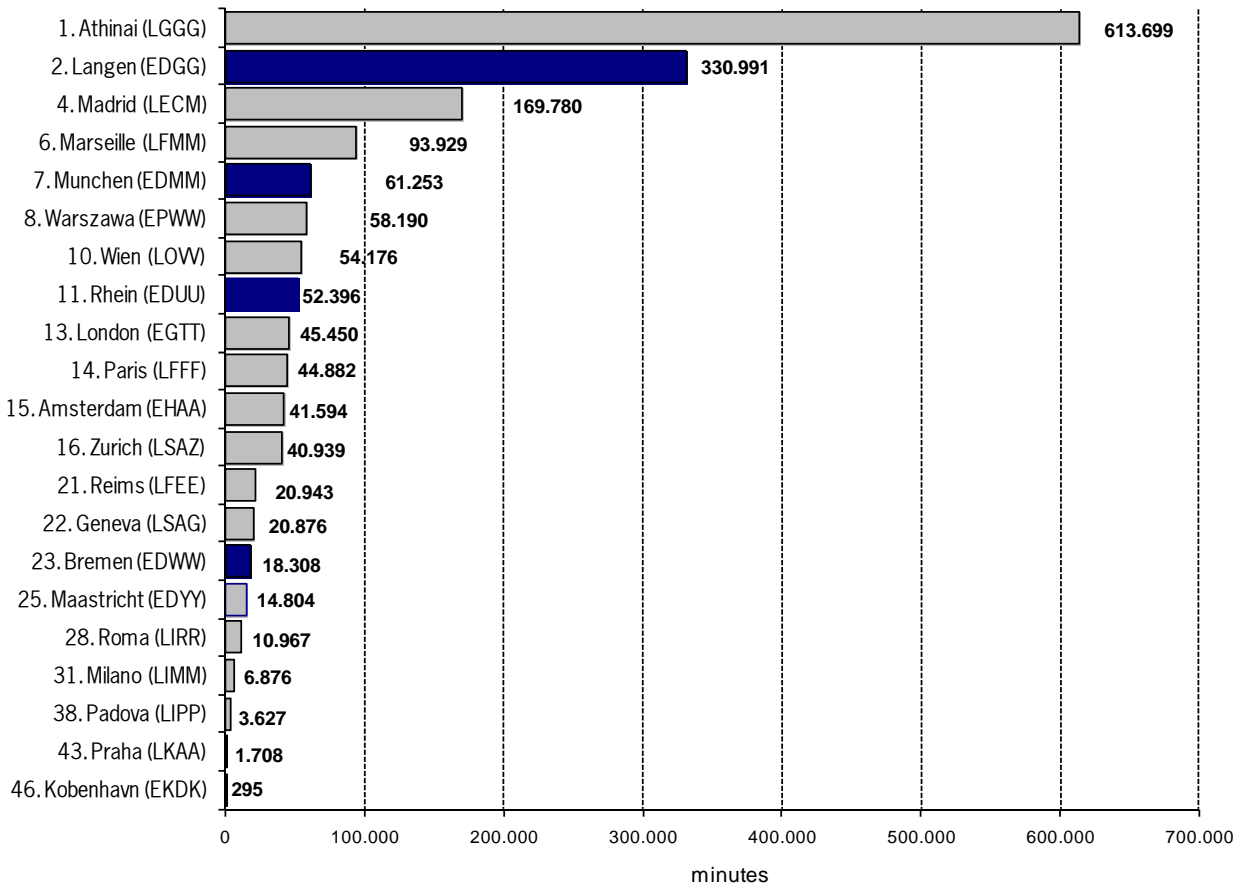
ATFM Delay as a result of ATFM measures

ATFM Delay in minutes as a result of ATFM measures of selected European FMPs.

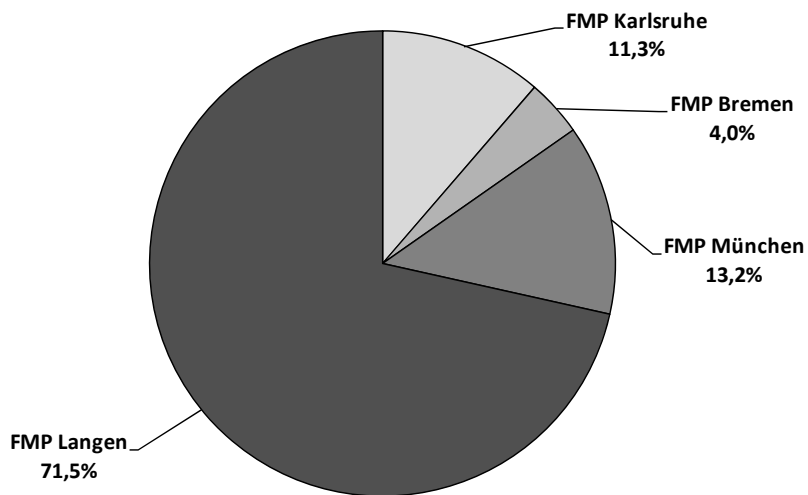
ATFM Delay:

difference in time between estimated take-off time (ETOT) and calculated take-off time (CTOT) of the CFMU.

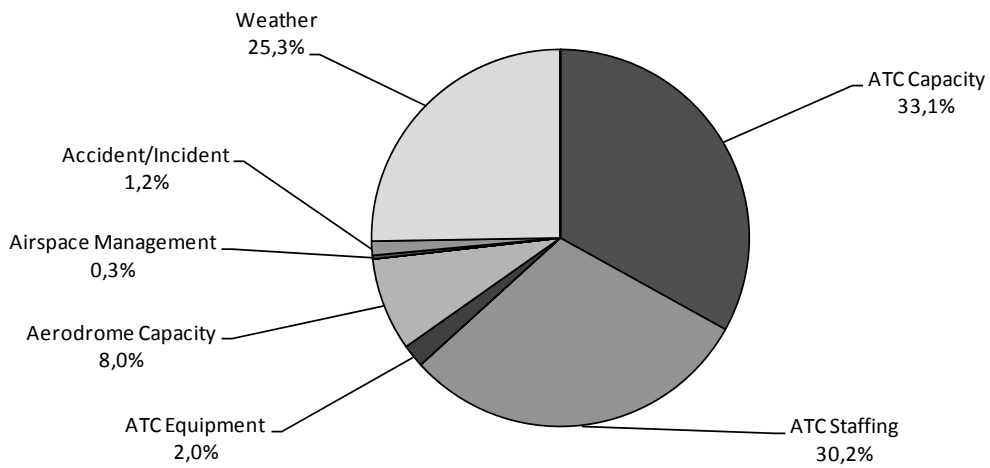
Percentage of German FMPs: 19,5% = 462.948 minutes of total delay of 2.376.335 minutes



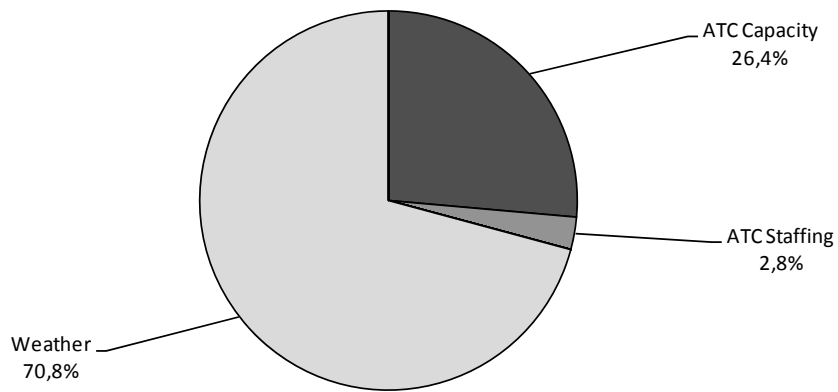
Percentage of German "ATFM delay" attributable to different FMPs
(Source: DFS CC-FC, based on FMP reports)



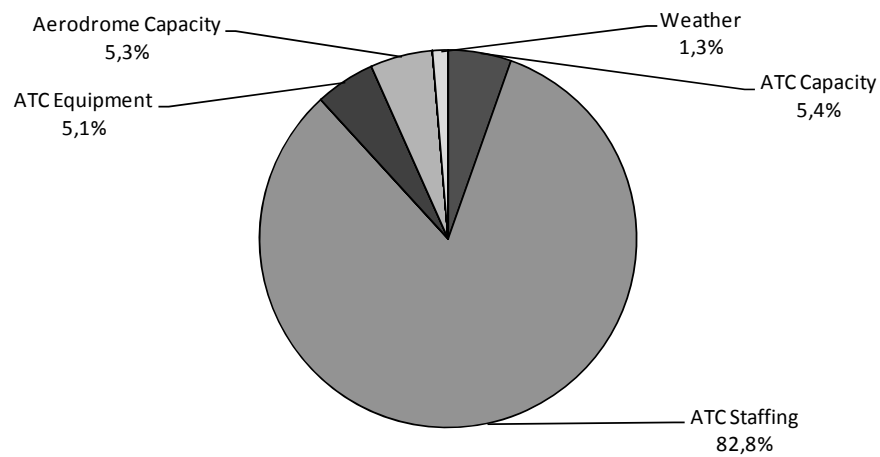
FMP
Langen



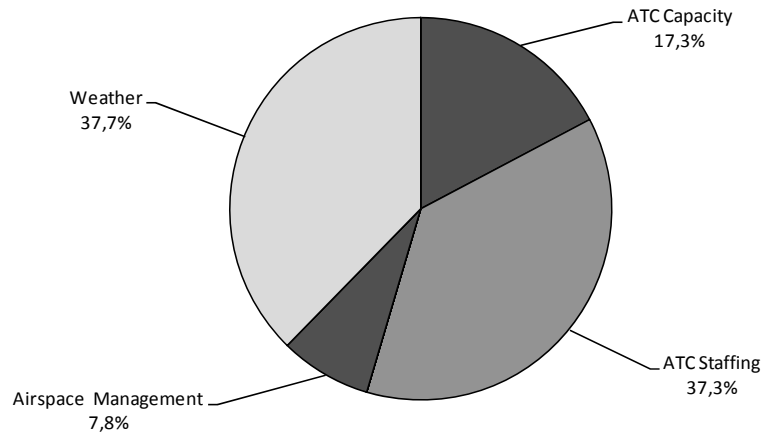
FMP
München



FMP
Bremen

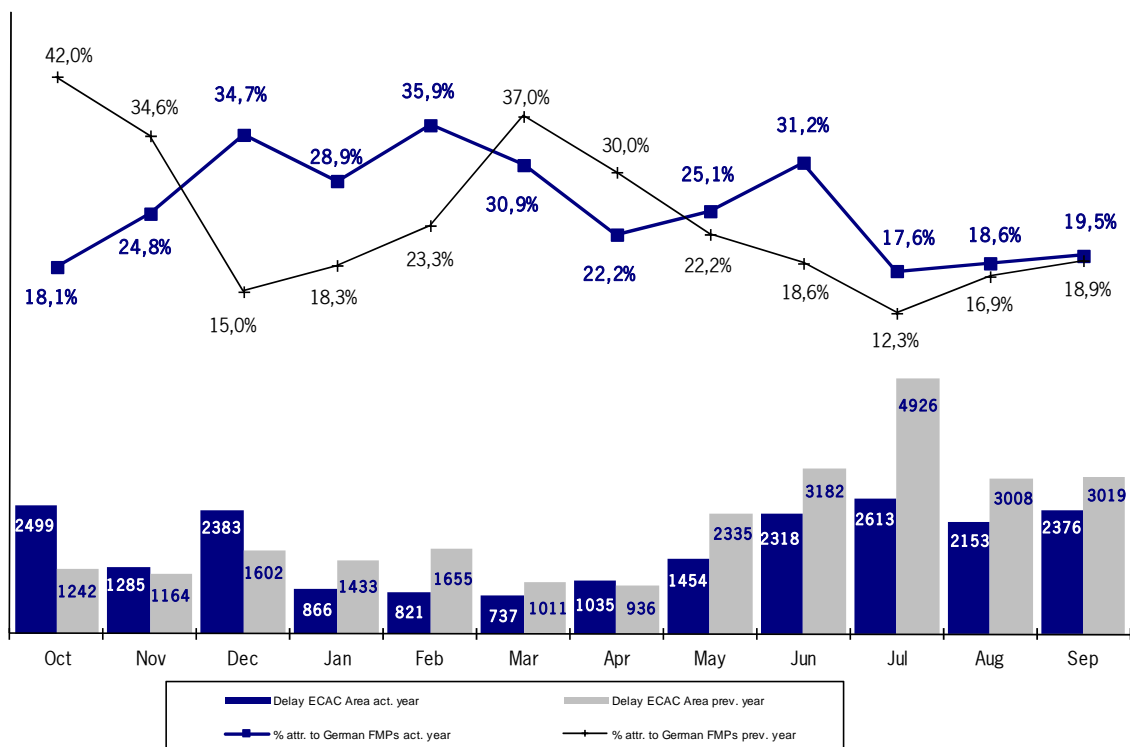


FMP
Karlsruhe

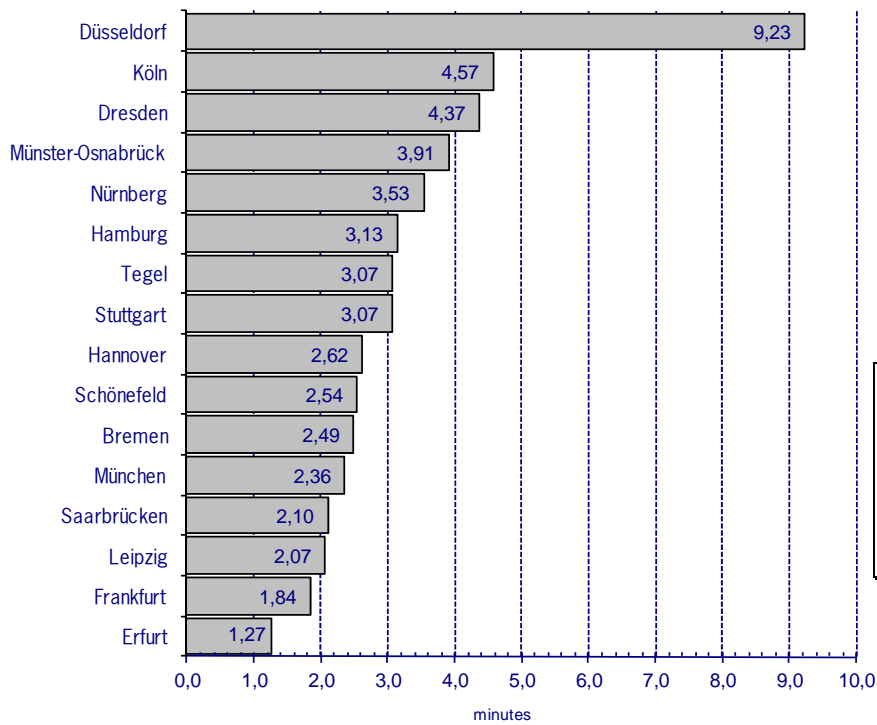


Development and share of "ATFM delays" attributable to German FMPs
(Source: CFMU statistics)

ATFM delay (in thousand minutes) and percentages of ATFM delays attributable to ATFM measures taken by German FMPs.



ATFM departure delays at international German airports



Average ATFM delays in minutes for departures from international German airports following ATFM measures of European FMPs.

German airports:
13,3% = 314.961 minutes of total delay of 2.376.335 minutes

ATFM departure delays at international German airports

Percentage of ATFM delays for flights departing from international German airports attributable to ATFM measures of German FMPs in categories. The delays are distributed in 3 categories.

