



DFS Deutsche Flugsicherung

LIZ

Situation and
Information
Centre

ATFM delay report

August 2011

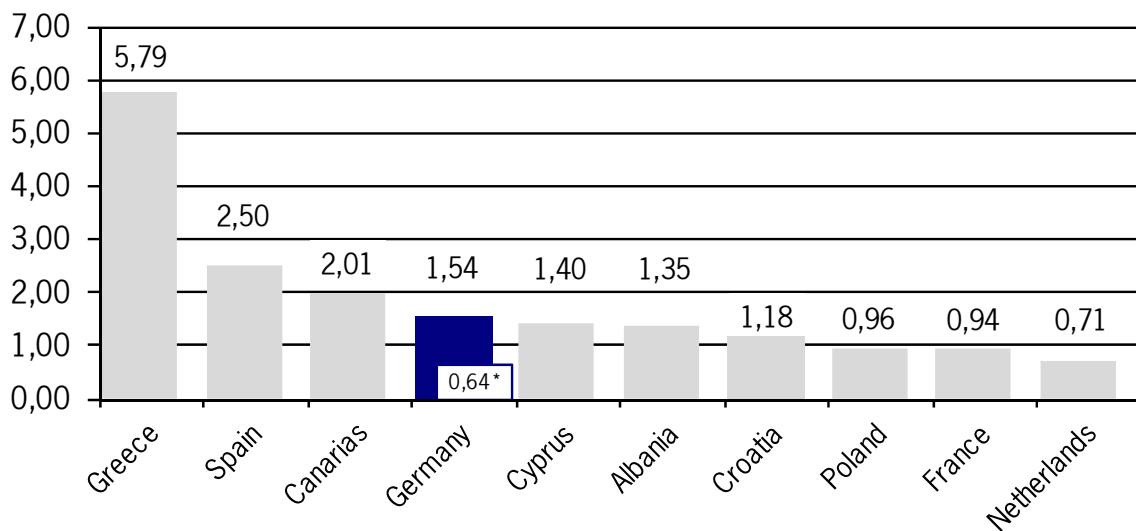
Air Traffic Flow Management Delay (ATFM) ATFM measures in Europe (Source: CFMU statistics)

	August 2011	August 2010	Trend 10/11
Total Flights	929.179	915.098	1,5%
Regulated Flights	161.775 17,4%	228.936 25,0%	-29,3%
Delayed Flights	103.210 11,1%	147.296 16,1%	-29,9%

Total Flights Number of flight plans having been activated in the EUROCONTROL CFMU TACT-System.
Regulated Flights Number of flights / percentage of flights with SLOT allocation (with & without delay).
Delayed Flight Number of flights / percentage of flights subject to delays due to ATFM measures.
Trend Column The percentages show the changes compared to the corresponding period last year.

ATFM-Delay per flight

Average ATFM delay per flight in minutes attributable to national FMPs.



*caused by ATC
(source: DFS CC/FC, based on FMP reports)

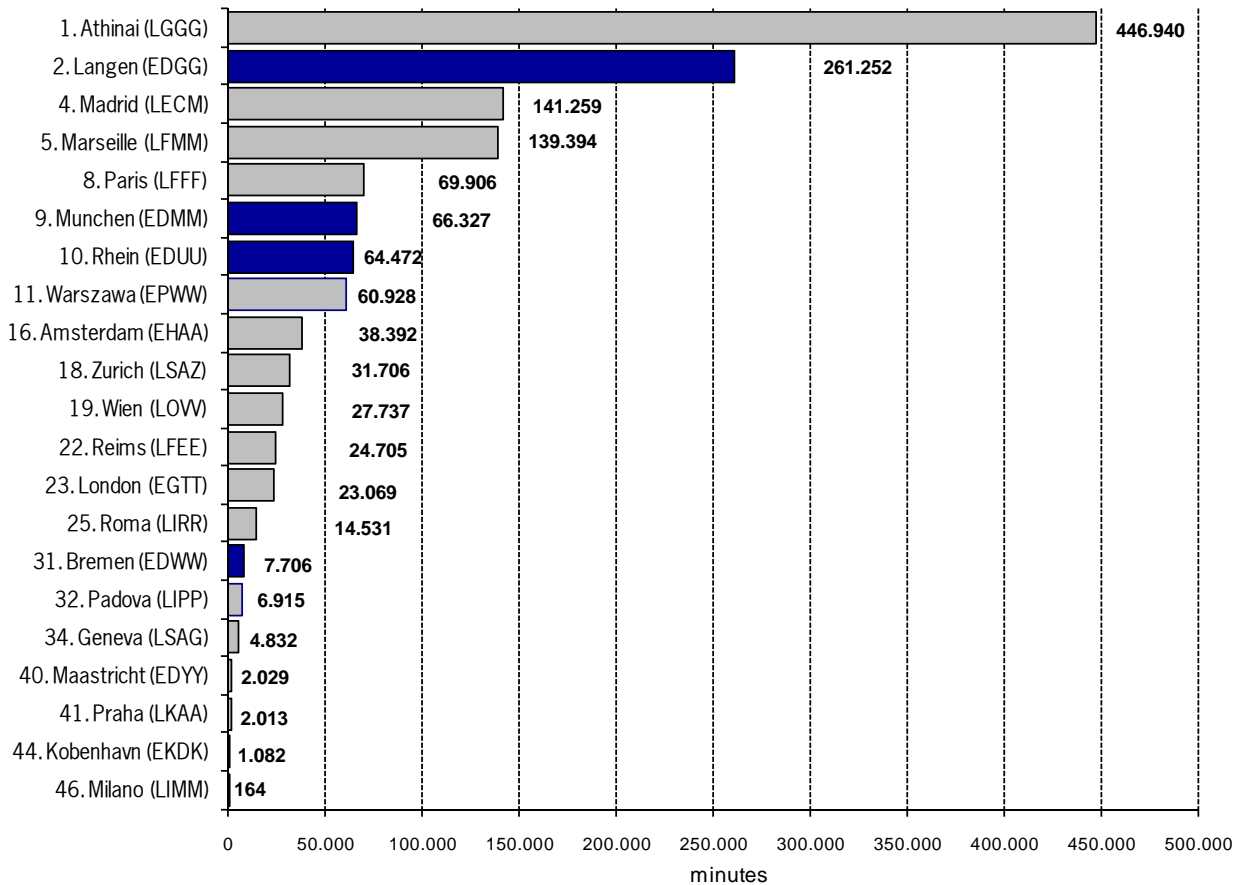
ATFM Delay as a result of ATFM measures

ATFM Delay in minutes as a result of ATFM measures of selected European FMPs.

ATFM Delay:

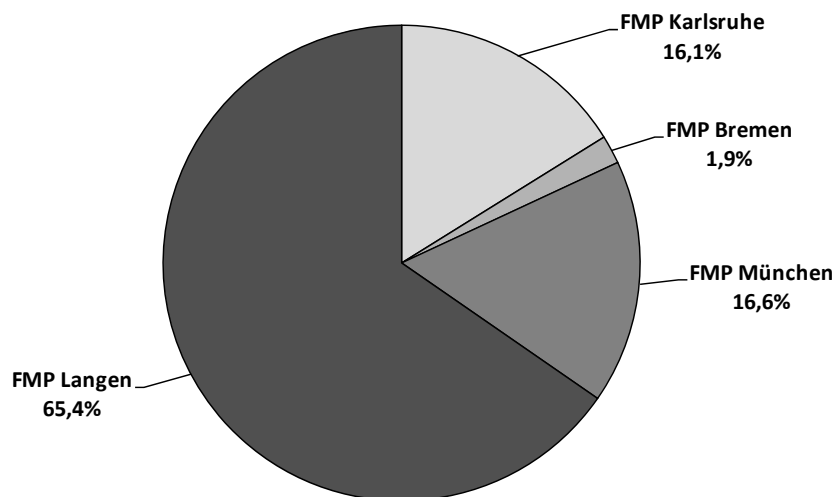
difference in time between estimated take-off time (ETOT) and calculated take-off time (CTOT) of the CFMU.

Percentage of German FMPs: 18,6% = 399.757 minutes of total delay of 2.152.500 minutes

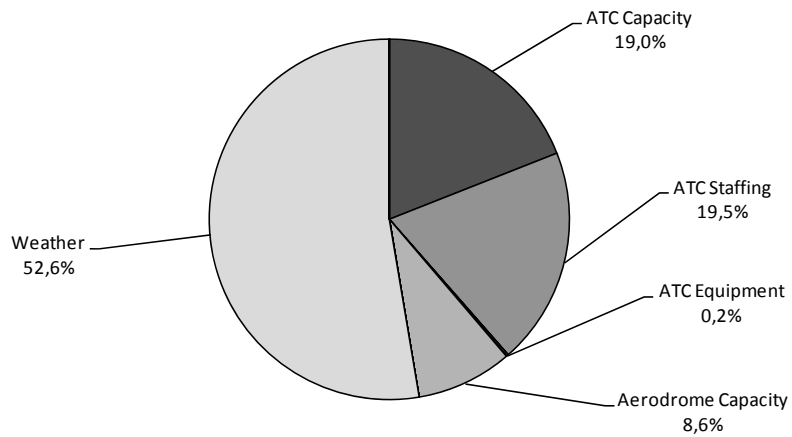


Percentage of German "ATFM delay" attributable to different FMPs

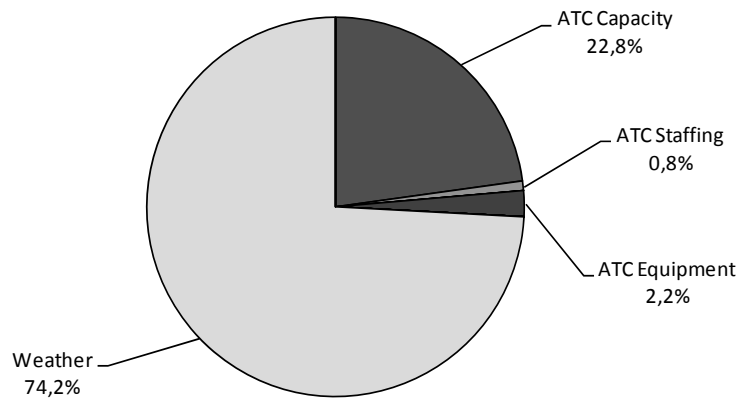
(Source: DFS CC-FC, based on FMP reports)



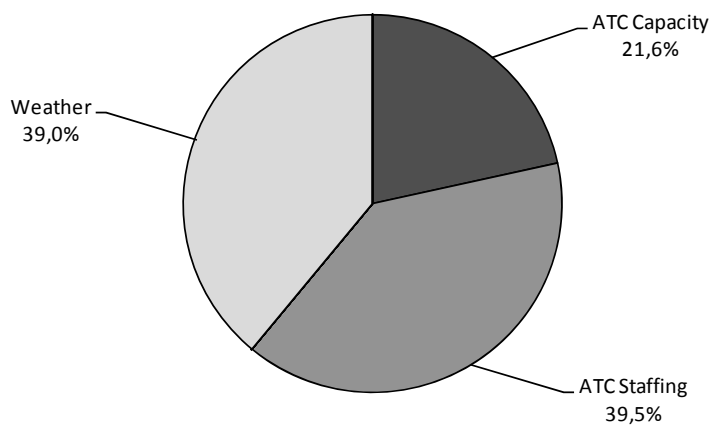
FMP
Langen



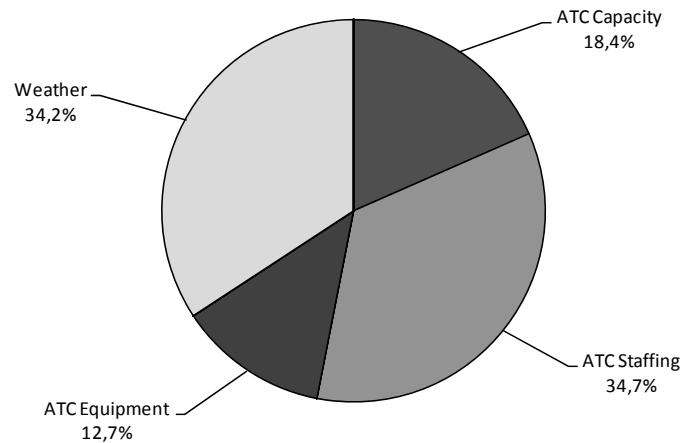
FMP
München



FMP
Bremen

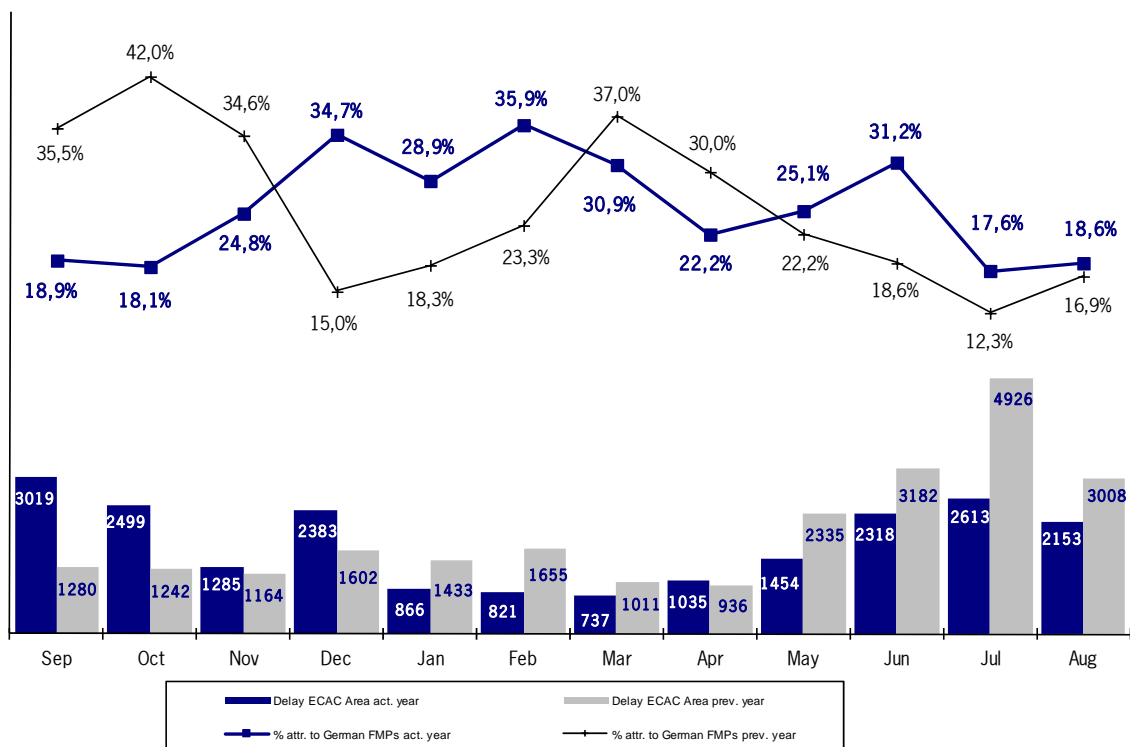


FMP
Karlsruhe

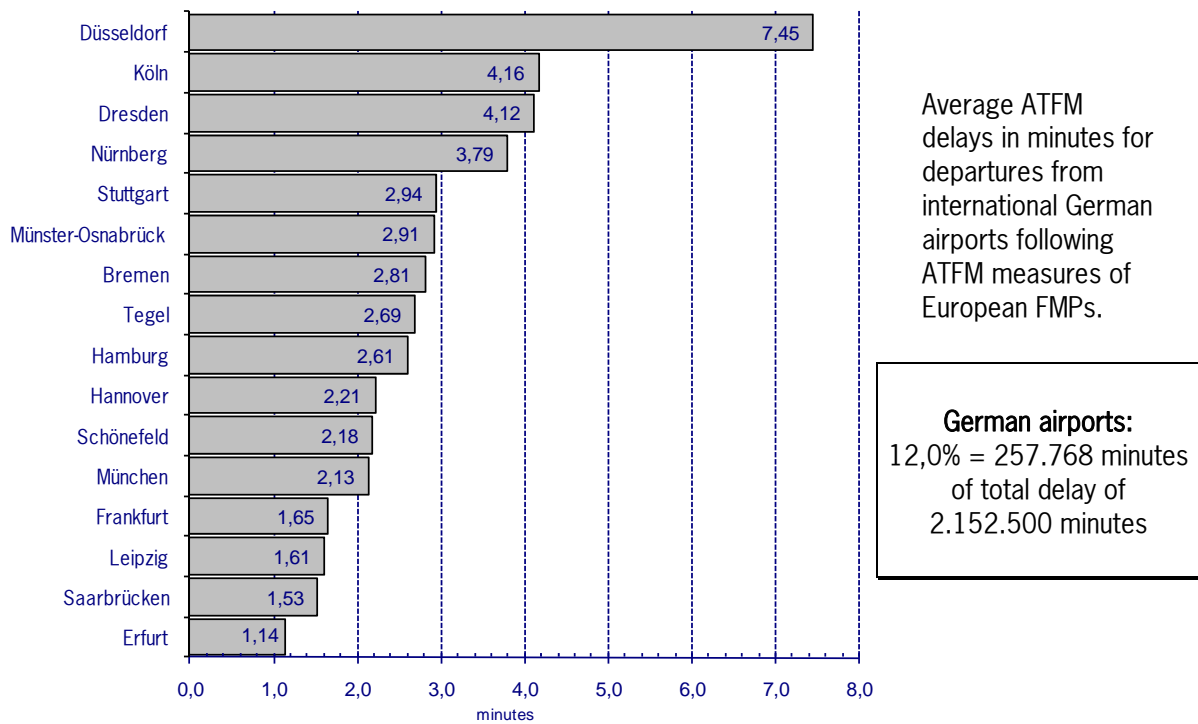


Development and share of "ATFM delays" attributable to German FMPs
(Source: CFMU statistics)

ATFM delay (in thousand minutes) and percentages of ATFM delays attributable to ATFM measures taken by German FMPs.



ATFM departure delays at international German airports



ATFM departure delays at international German airports

Percentage of ATFM delays for flights departing from international German airports attributable to ATFM measures of German FMPs in categories. The delays are distributed in 3 categories.

