



DFS Deutsche Flugsicherung

# LIZ

Situation and  
Information  
Centre

## ATFM delay report

April 2011

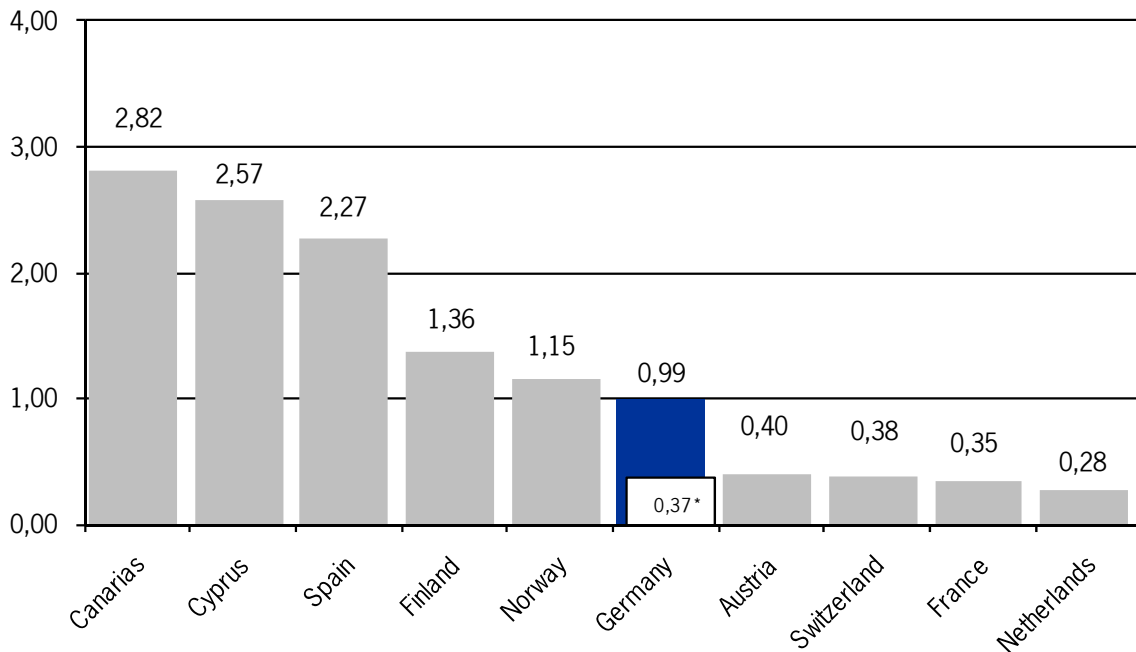
### Air Traffic Flow Management Delay (ATFM) ATFM measures in Europe (Source: CFMU statistics)

	April 2011		April 2010		Trend 10/11
Total Flights	807.431		696.876		15,9%
Regulated Flights	104.911	13,0%	88.650	12,7%	18,3%
Delayed Flights	59.837	7,4%	47.670	6,8%	25,5%

**Total Flights** Number of flight plans having been activated in the EUROCONTROL CFMU TACT-System.  
**Regulated Flights** Number of flights / percentage of flights with SLOT allocation (with & without delay).  
**Delayed Flight** Number of flights / percentage of flights subject to delays due to ATFM measures.  
**Trend Column** The percentages show the changes compared to the corresponding period last year.

### ATFM-Delay per flight

Average ATFM delay per flight in minutes attributable to national FMPs.



\*caused by ATC

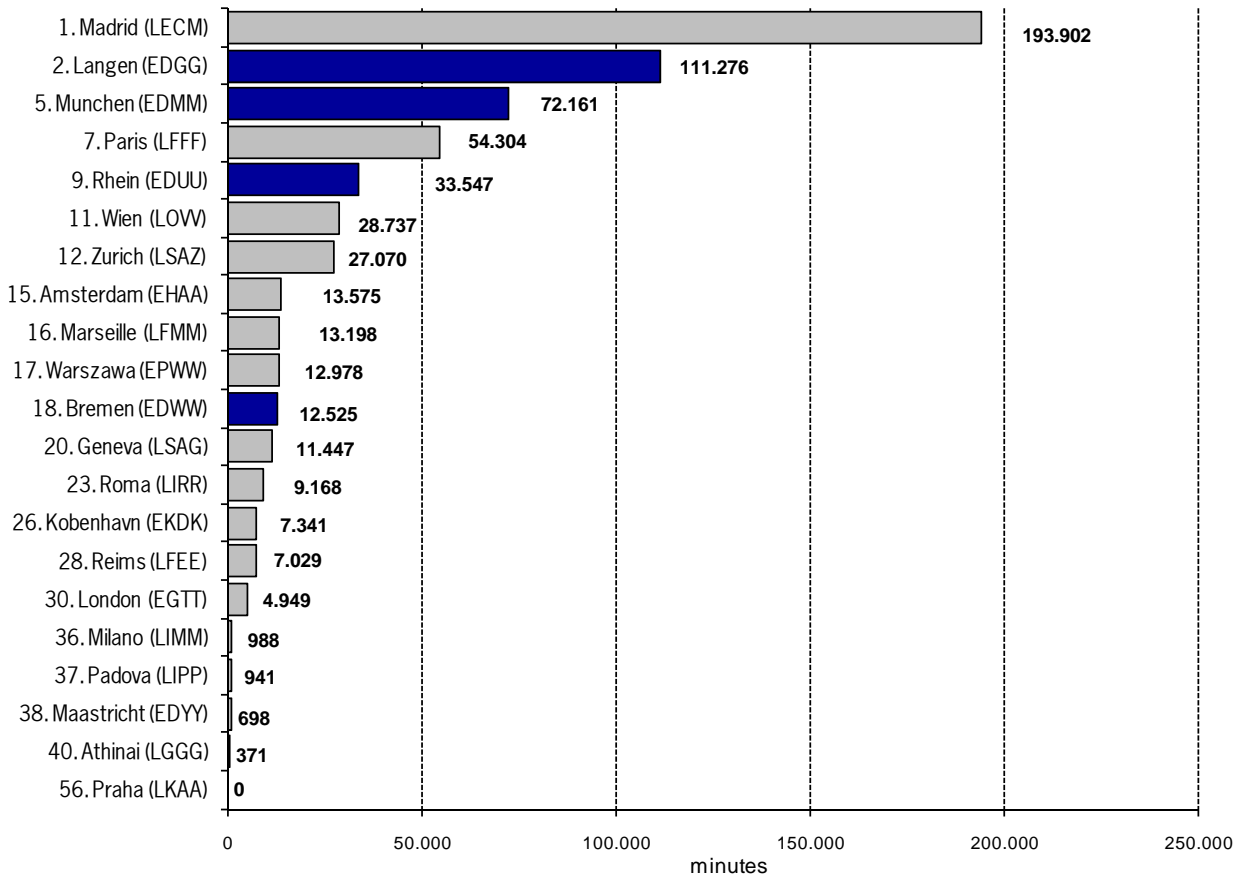
**ATFM Delay as a result of ATFM measures**

ATFM Delay in minutes as a result of ATFM measures of selected European FMPs.

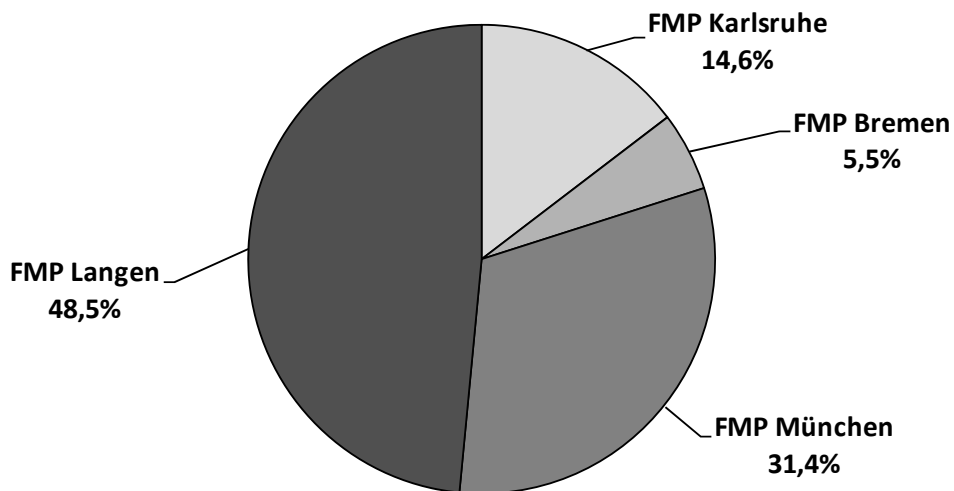
*ATFM Delay:*

*difference in time between estimated take-off time (ETOT) and calculated take-off time (CTOT) of the CFMU.*

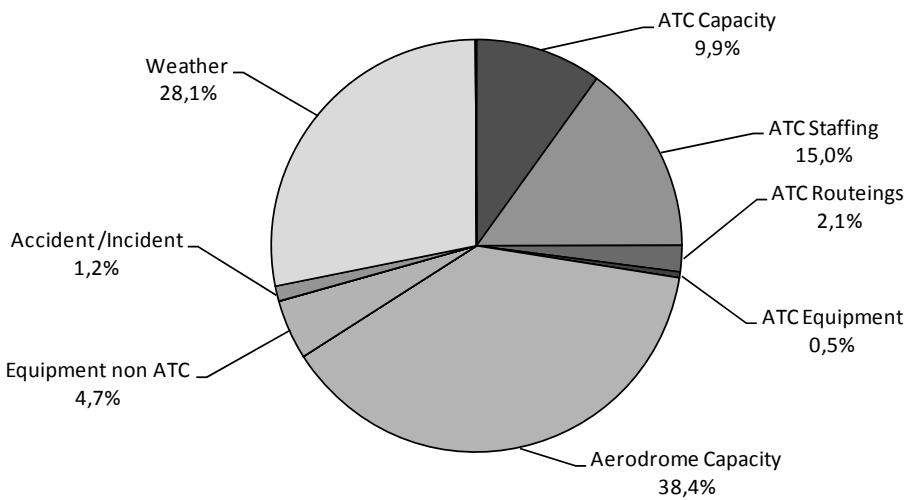
**Percentage of German FMPs: 22,2% = 229.509 minutes of total delay of 1.035.263 minutes**



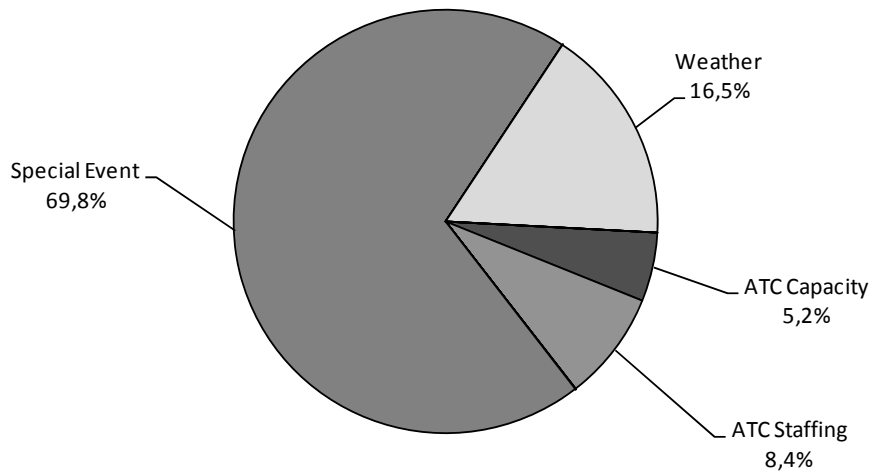
**Percentage of German "ATFM delay" attributable to different FMPs**  
(Source: DFS CC-FC, based on FMP reports)



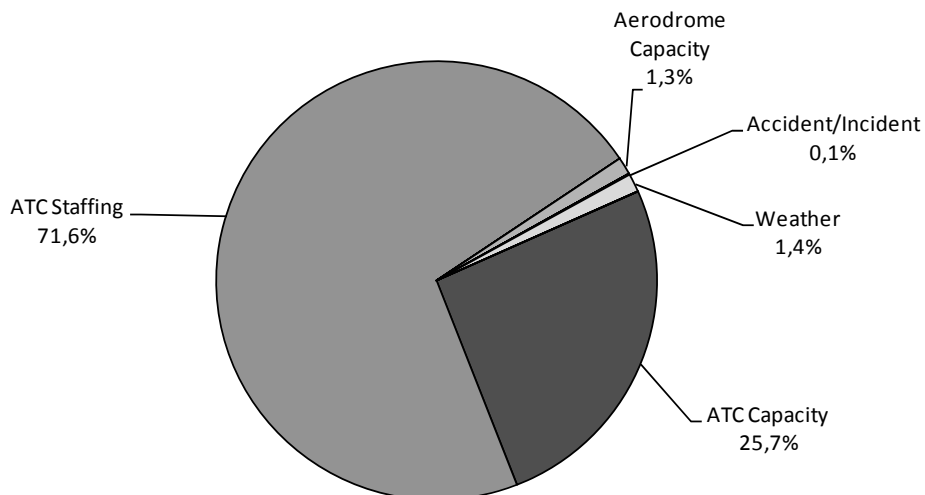
FMP  
Langen



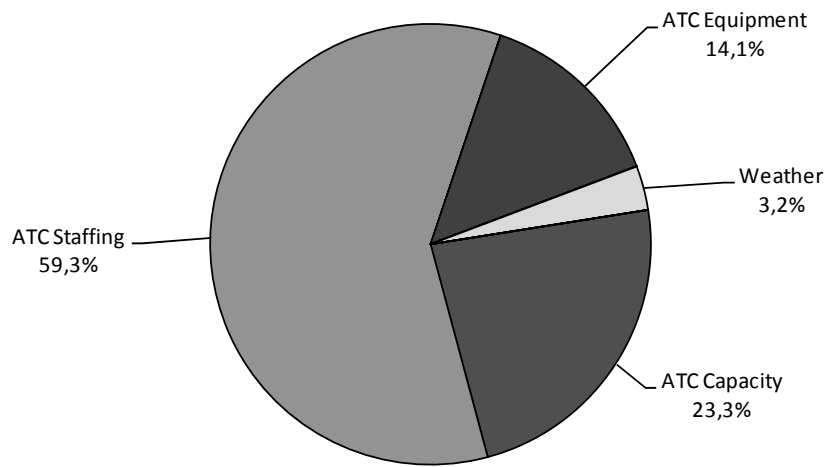
FMP  
München



FMP  
Bremen

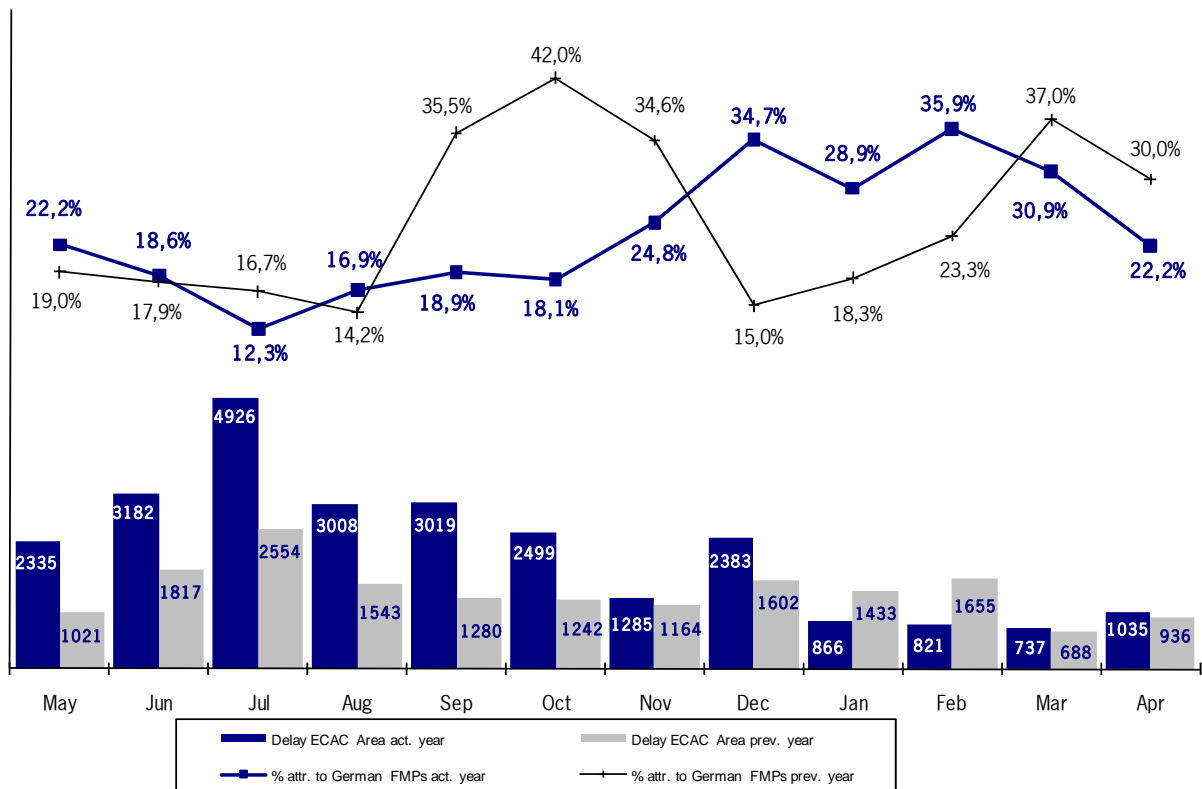


FMP  
Karlsruhe

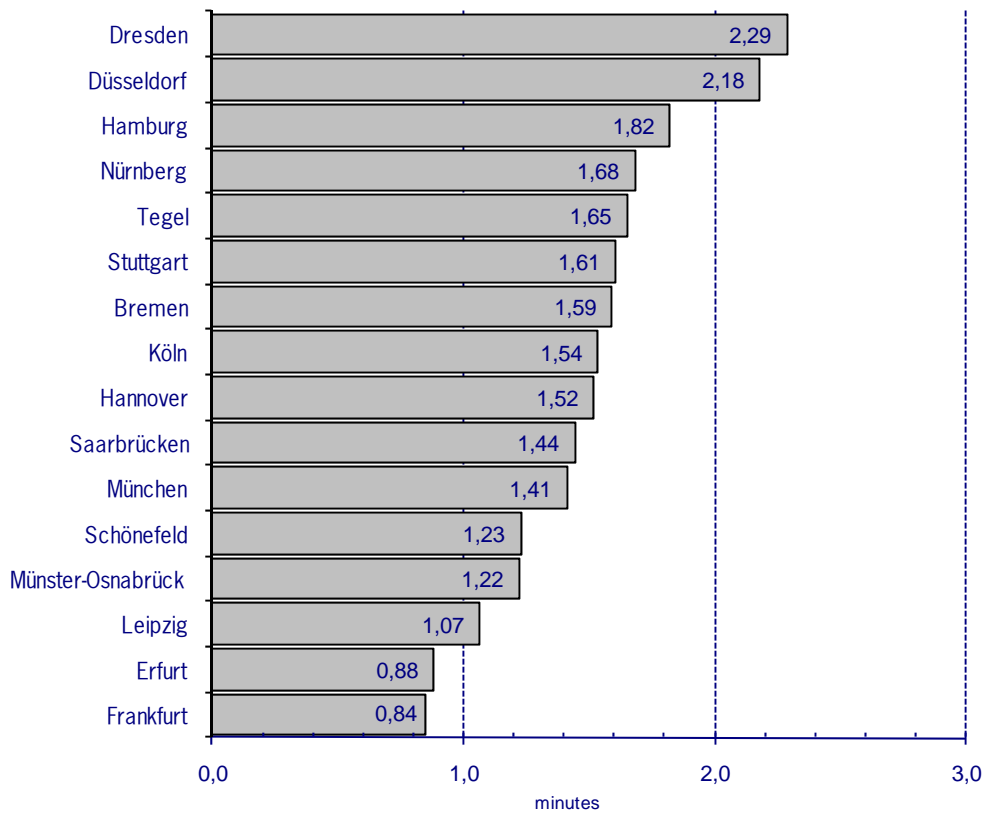


**Development and share of "ATFM delays" attributable to German FMPs**  
(Source: CFMU statistics)

ATFM delay (in thousand minutes) and percentages of ATFM delays attributable to ATFM measures taken by German FMPs.



### ATFM departure delays at international German airports



Average ATFM delays in minutes for departures from international German airports following ATFM measures of European FMPs.

**German airports:**  
 11,6% = 119.586 minutes  
 of total delay of  
 1.035.263 minutes

### ATFM departure delays at international German airports

Percentage of ATFM delays for flights departing from international German airports attributable to ATFM measures of German FMPs in categories. The delays are distributed in 3 categories.

