



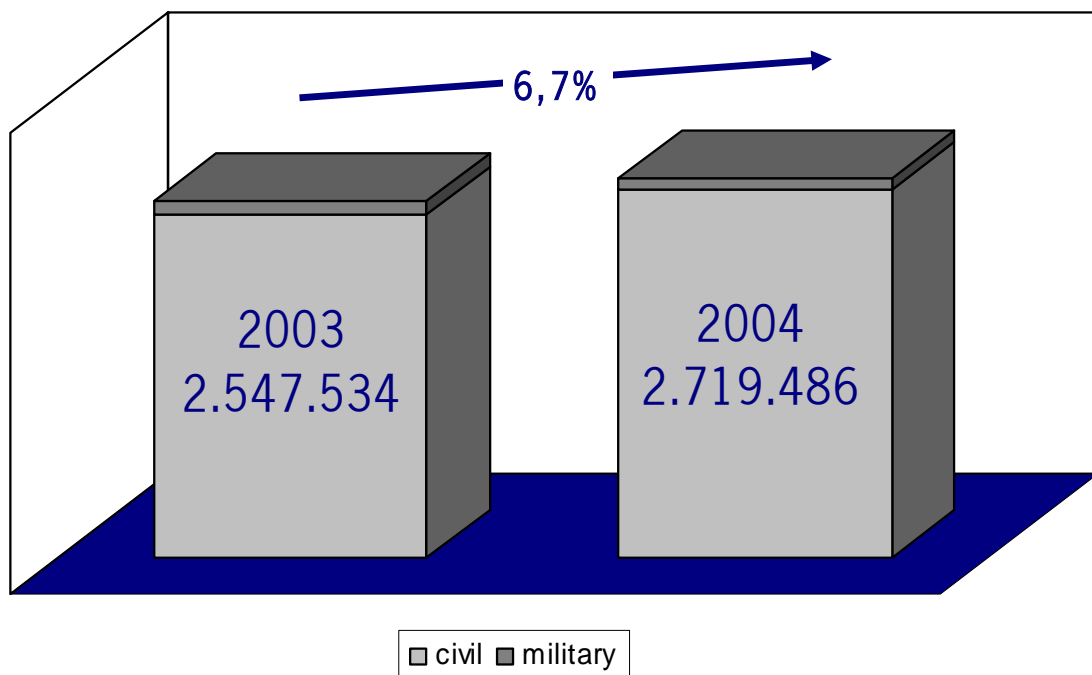
DFS Deutsche Flugsicherung

Air traffic statistics

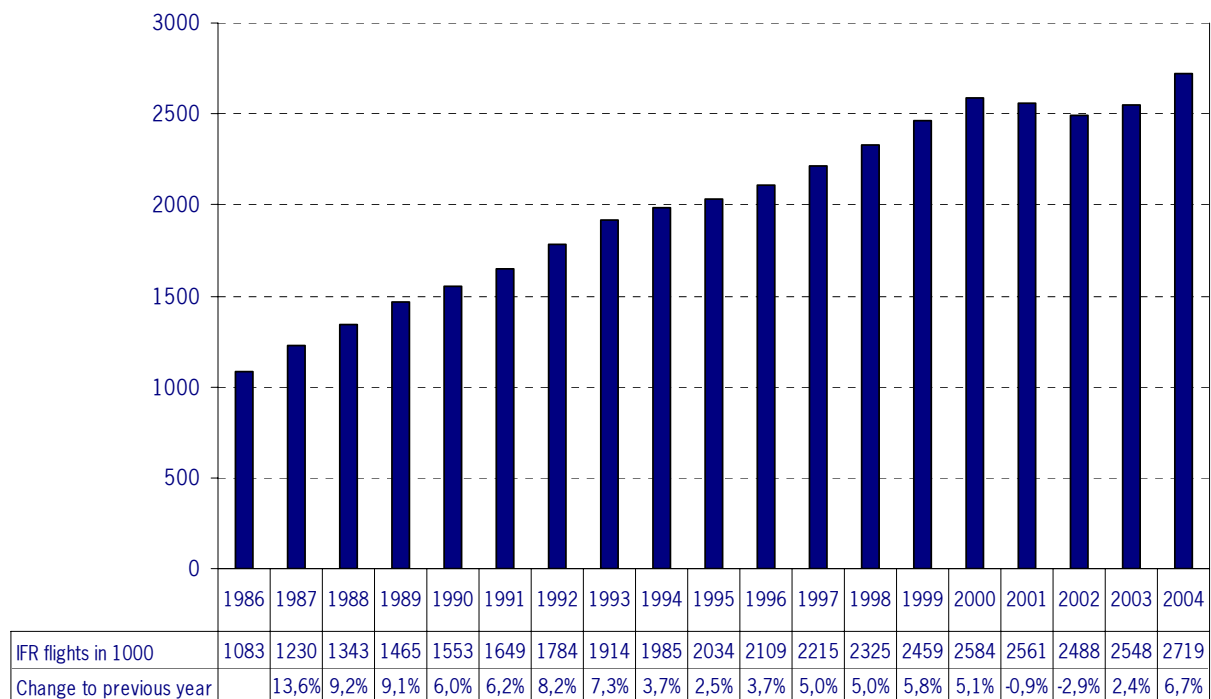
Annual summary 2004

IFR flights in the Federal Republic of Germany 2004

	2004	2003	Trend
Civil flights	2.625.904	2.447.269	7,3%
Military flights	93.582	100.265	-6,7%
Total	2.719.486	2.547.534	6,7%



Development of IFR traffic 1986 to 2004

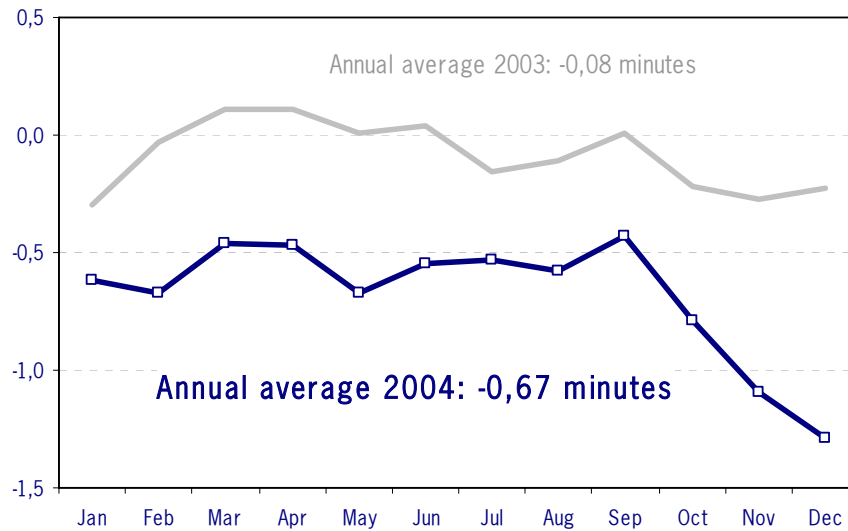


Comparison of average flight distances

Comparison of the average direct distance (great-circle distances) resp. average flight plan distance to the average of the distances determined by the STANLY system (radar tracks), including departure, holding and approach procedures.

	2004		2003	
	Average Distance in NM	Delta to actual flight distance	Average Distance in NM	Delta to actual flight distance
Actual Flight Distance	200,0		197,6	
Great Circle Distance	179,1	20,8	178,8	18,8
Flight Plan Distance	192,3	7,7	192,3	5,3

Enroute quality 2004

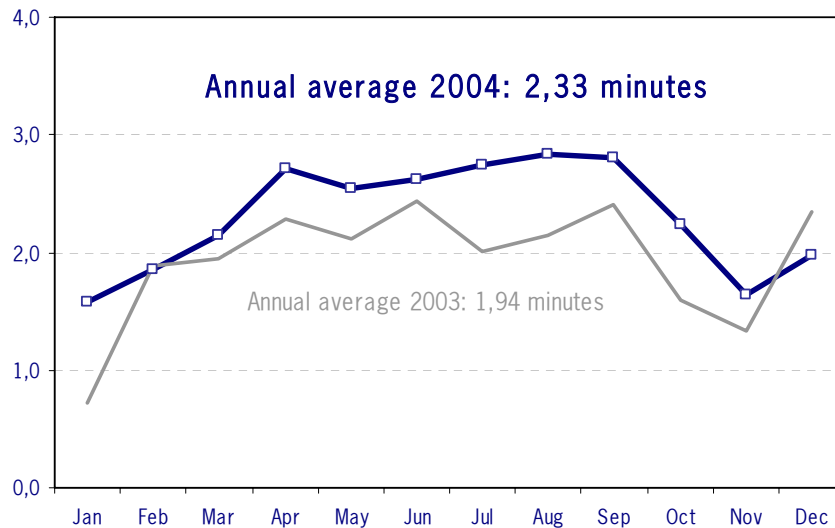


Quality of IFR flights in the German airspace; the difference between the flight time calculated by the flight plan systems of DFS (ZKSD, P1, MADAP, KARLDAP) and the total flight time determined by the STANLY system, including holding and approach procedures, is indicated in minutes. If the actual flying time is shorter than the calculated time the quality is shown as a positive value, if it is longer, it is shown as a negative value.

Arrival quality 2004

Evaluated Airports:

Berlin-Schönefeld, Berlin-Tegel, Berlin-Tempelhof, Bremen, Dresden, Düsseldorf, Erfurt, Frankfurt, Hamburg, Hannover, Köln, Leipzig, München, Münster-Osnabrück, Nürnberg, Saarbrücken and Stuttgart



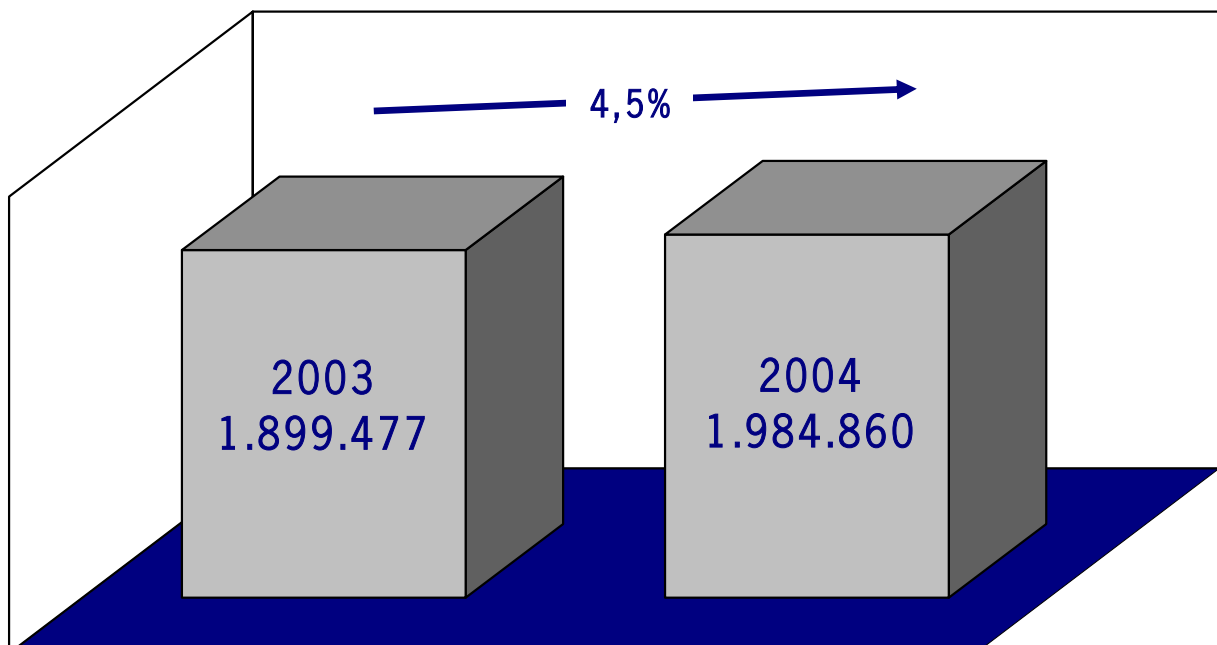
The service quality concerning "Punctuality of arrivals" is expressed in terms of the total flying time determined from the entry into the region, departure from an airport within this region or the first route point in this region (in case of a change from VFR to IFR) to the landing of the aircraft compared to a calculated standard arrival time. If the actual flying time is shorter than the standard time the quality is shown as a positive value, if it is longer, it is shown as a negative value.

IFR take-offs and landings at international and regional German airports 2004

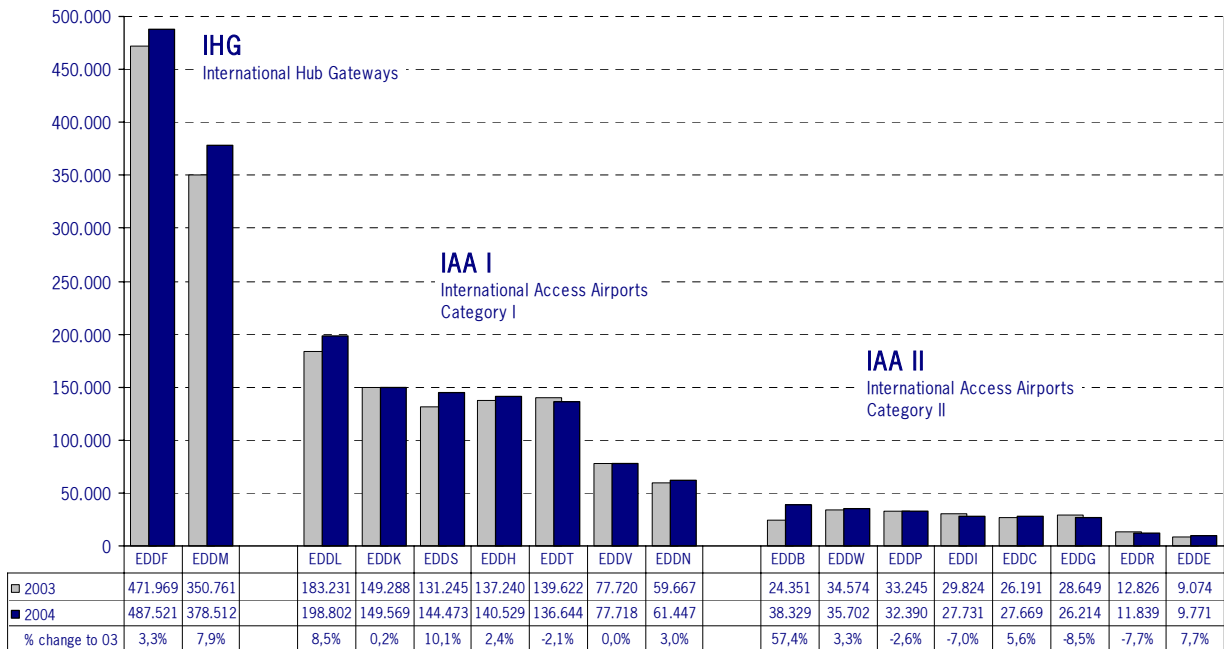
	2004	2003	Trend
International airports	1.984.860	1.899.477	4,5%
Regional airports	164.495	163.588	0,6%
Total	2.149.355	2.063.065	4,2%

IFR take-offs and landings at international airports

Berlin-Schönefeld, Berlin-Tegel, Berlin-Tempelhof, Bremen, Dresden, Düsseldorf, Erfurt, Frankfurt, Hamburg, Hannover, Köln, Leipzig, München, Münster-Osnabrück, Nürnberg, Saarbrücken, Stuttgart



Traffic count of IFR departures and arrivals at international airports 2004

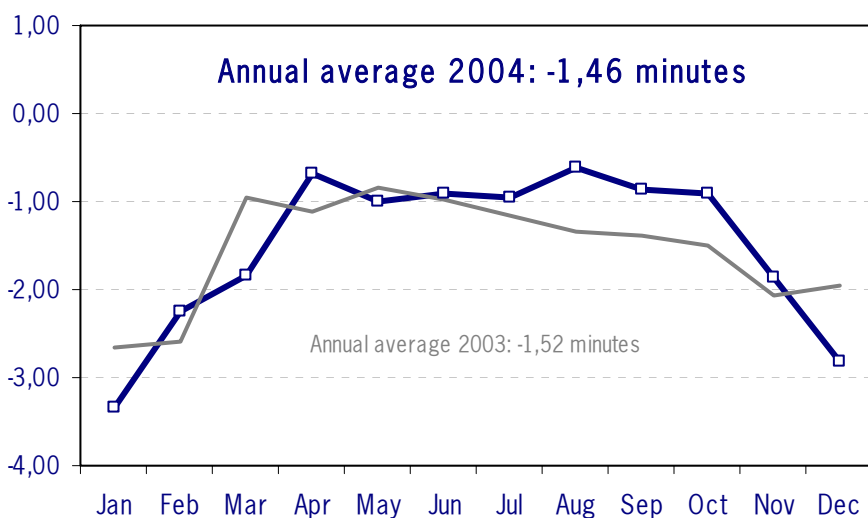


International airports

Departure quality 2004

Evaluated Airports:

Berlin-Schönefeld, Berlin-Tegel, Berlin-Tempelhof, Dresden, Düsseldorf, Erfurt, Frankfurt, Köln, Leipzig, München, Nürnberg and Stuttgart

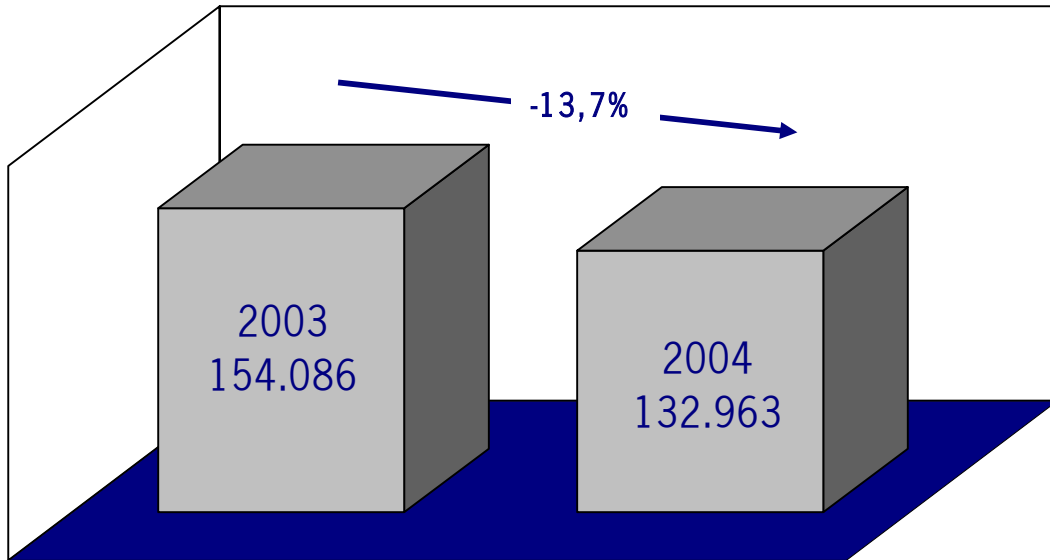


Punctuality of departures:

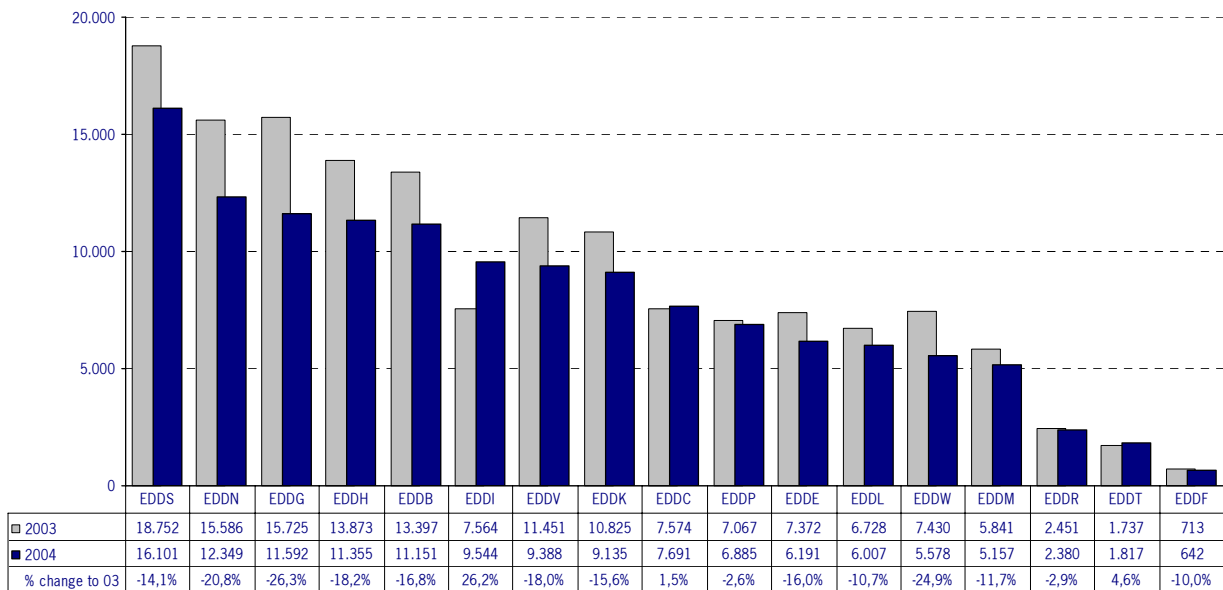
The service quality "Departures" is determined on the basis of the data provided by the STANLY system. Indicated is the difference between the standard taxi time and the time required for the process from SUR (start-up request) to ATD (actual time of departure). If the calculated SUR/ATD time is shorter than the standard taxi time, it is shown as a bonus, if it is longer, it is shown as a delay.

VFR take-offs, landings and touch & goes at international airports

Berlin-Schönefeld, Berlin-Tegel, Berlin-Tempelhof, Bremen, Dresden, Düsseldorf, Erfurt, Frankfurt, Hamburg, Hannover, Köln, Leipzig, München, Münster-Osnabrück, Nürnberg, Saarbrücken, Stuttgart



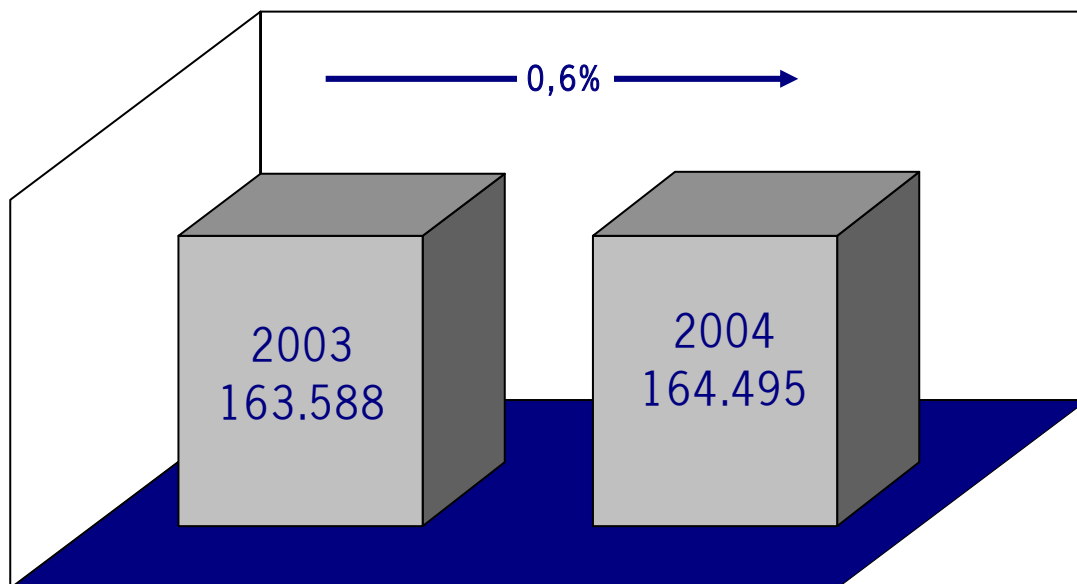
Traffic count of VFR take-offs, landings and touch & goes at international airports



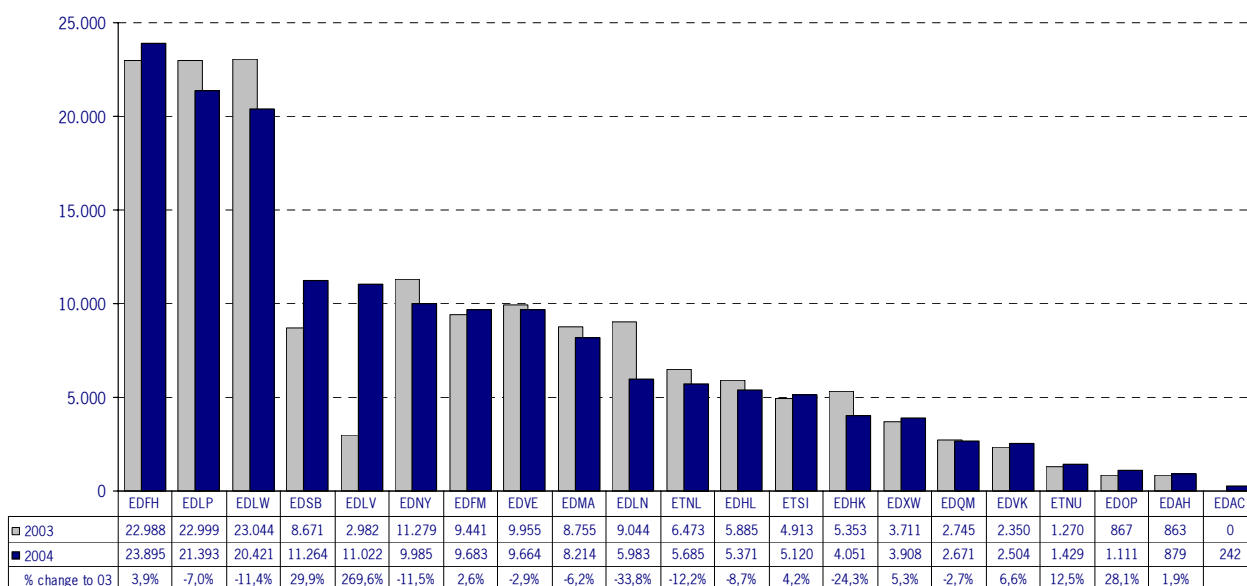
VFR at international airports

IFR take-offs and landings at regional airports

Altenburg-Nobitz, Augsburg, Bayreuth, Braunschweig, Dortmund, Friedrichshafen, Hahn, Heringsdorf, Hof, Karlsruhe-Baden, Kassel, Kiel, Laage, Lübeck, Mannheim, Mönchengladbach, Niederrhein, Neubrandenburg, Paderborn, Schwerin, Westerland.



Traffic count of IFR departures and arrivals at regional airports 2004



Regional airports