



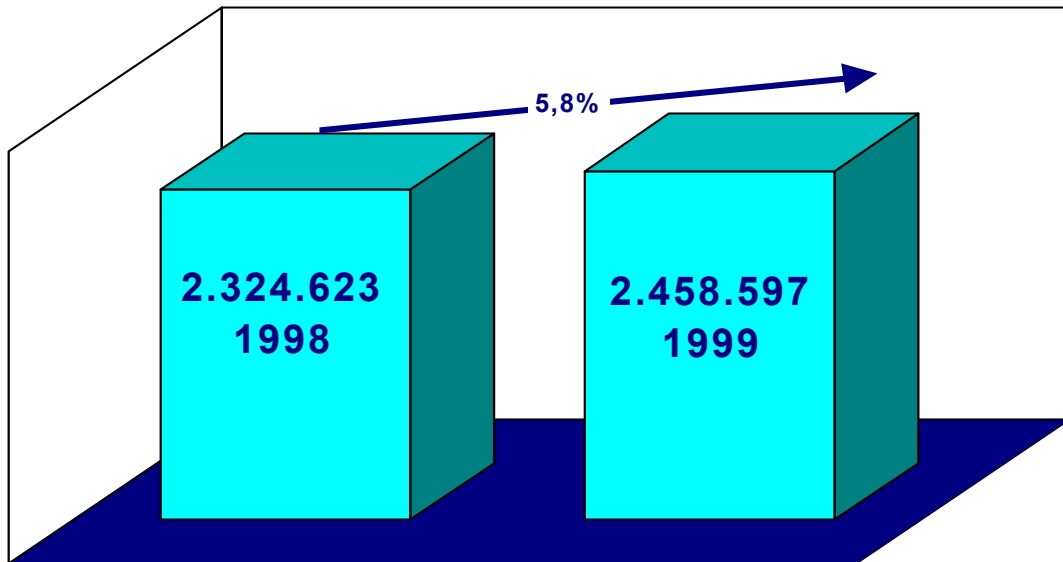
DFS Deutsche Flugsicherung

Air traffic statistics

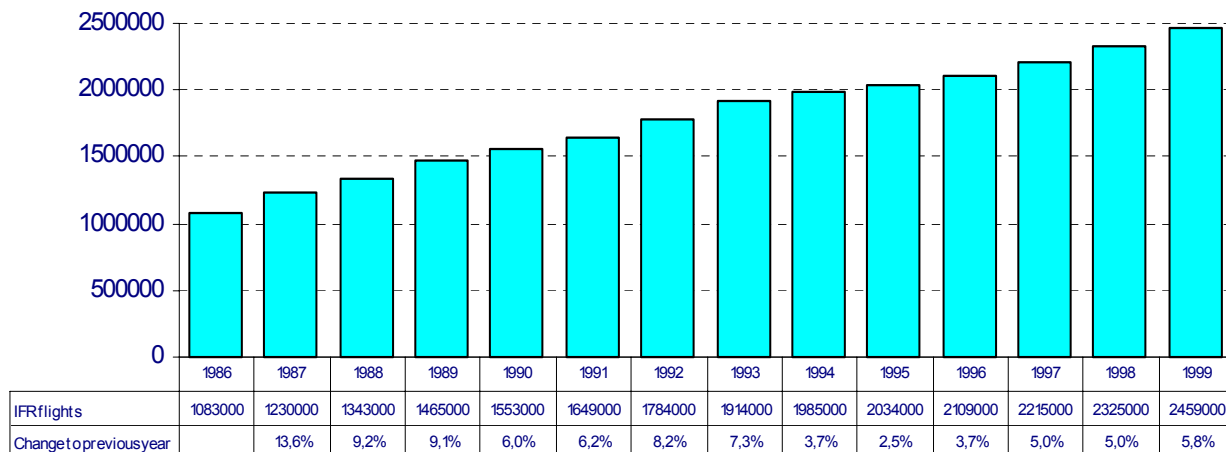
Annual summary 1999

IFR flights in the Federal Republic of Germany 1999

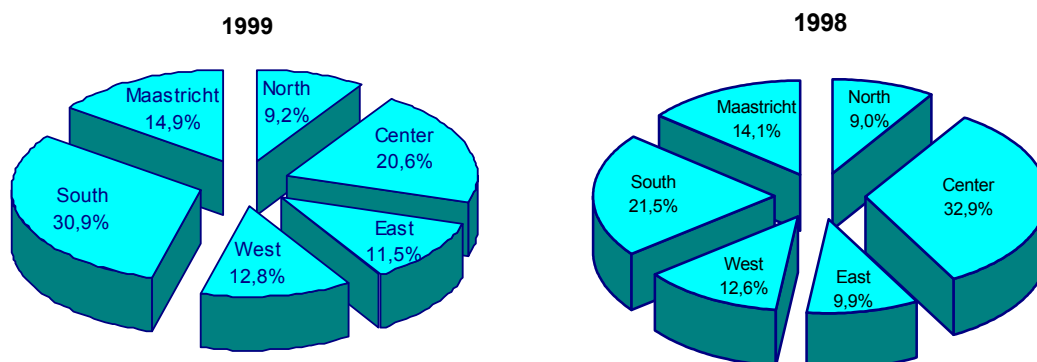
	1999	1998	Trend
Civil flights	2.352.632	2.224.976	5,7%
Military flights	105.965	99.647	6,3%
Total DFS	2.458.597	2.324.623	5,8%



Development of IFR traffic 1986 to 1999



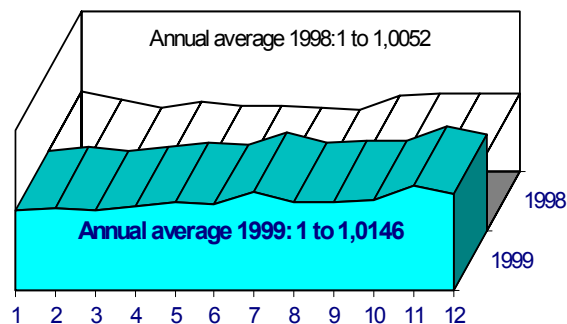
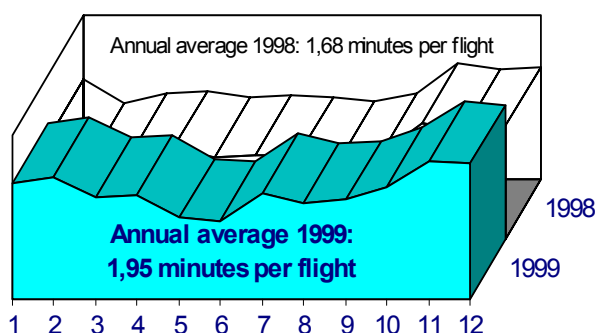
Percentage share of the Regions in the total number of controlled IFR movements



Punctuality "Enroute" 1999

Average delay per flight: 1,95 minutes

Planned <> Flown: 1 to 1,0146 NM



Definitions

Service quality "Enroute"

Punctuality "Enroute"

Delays of IFR flights in the German airspace; the difference between the flight time calculated by the flight plan systems of DFS (ZKSD, MADAP, KARLDAP) and the total flight time calculated by the STANLY system, including holding and approach procedures, is indicated in minutes.

Planned <> Flown

Relation of the aggregate flight distances taken from the flight plan systems of DFS (ZKSD, MADAP, KARLDAP) or the aggregate direct distances (great-circle distances) to the total of the distances determined by the STANLY system (radar tracks), including departure, holding and approach procedures.

Service quality "Departure" and "Arrival"

Punctuality of departures:

The service quality "Departures" is determined on the basis of the data provided by the STANLY system. Indicated is the difference between the standard taxi time and the time required for the process from SUR (start-up request) to ATD (actual time of departure). If the calculated SUR/ATD time is shorter than the standard taxi time, it is shown as a bonus, if it is longer, it is shown as a delay.

Punctuality of arrivals:

The service quality concerning "Punctuality of arrivals" is expressed in terms of the total delay determined from the entry into the region/departure from an airport within this region or the first route point in this region (in case of a change from VFR to IFR) to the landing of the aircraft.

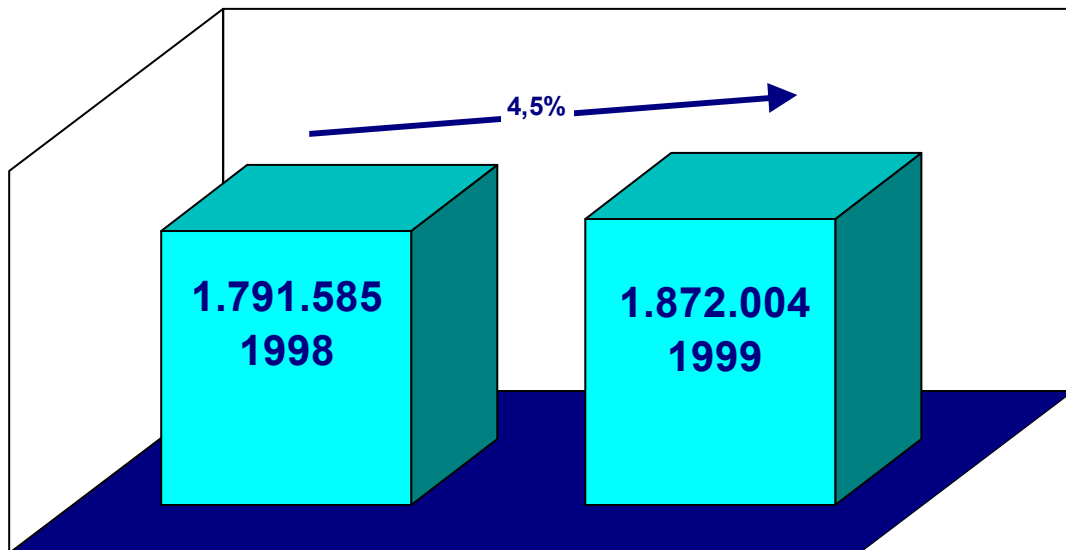
IFR take-offs and landings at international and regional German airports 1999

	1999	1998	Trend
International airports	1.872.004	1.791.585	4,5%
Regional airports	155.756	149.083	4,5%
Total	2.027.760	1.940.668	4,5%

L/A and T/G are not included

IFR take-offs and landings at international airports

Berlin-Schönefeld, Berlin-Tegel, Berlin-Tempelhof, Bremen, Dresden, Düsseldorf, Erfurt, Frankfurt, Hamburg, Hannover, Köln, Leipzig, München, Münster-Osnabrück, Nürnberg, Saarbrücken, Stuttgart



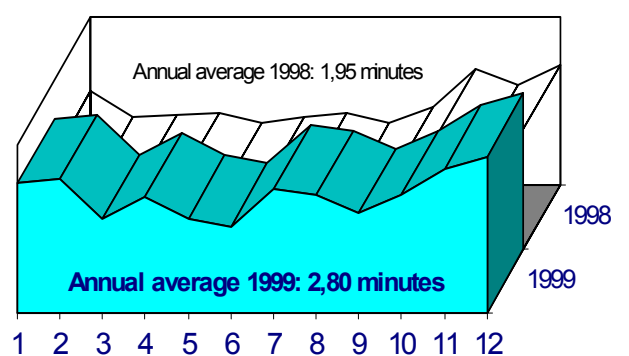
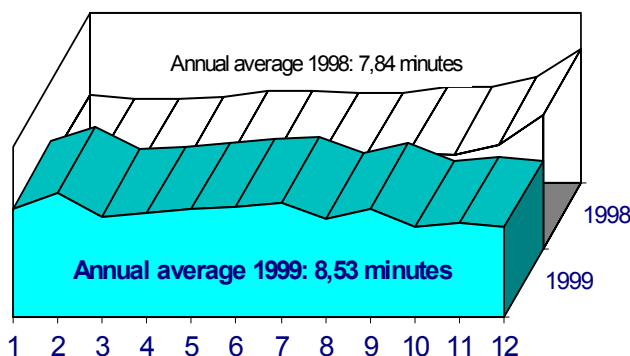
Service quality "Arrival" and "Departure" 1999

Average delay for departures: 8,53 minutes

Düsseldorf, Frankfurt and München
Starting September 1999 Berlin-Schönefeld, Berlin-Tegel, Berlin-Tempelhof, Dresden, Erfurt, Köln, Leipzig, Nürnberg, Stuttgart are included

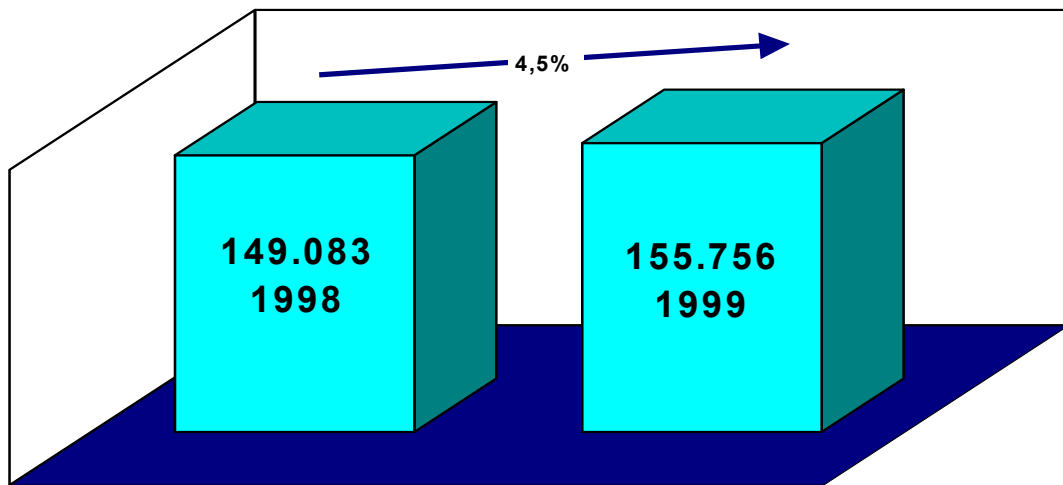
Average delay for arrivals: 2,80 minutes

Berlin-Schönefeld, Berlin-Tegel, Berlin-Tempelhof, Bremen, Dresden, Düsseldorf, Erfurt, Frankfurt, Hamburg, Hannover, Köln, Leipzig, München, Münster-Osnabrück, Nürnberg, Saarbrücken, Stuttgart

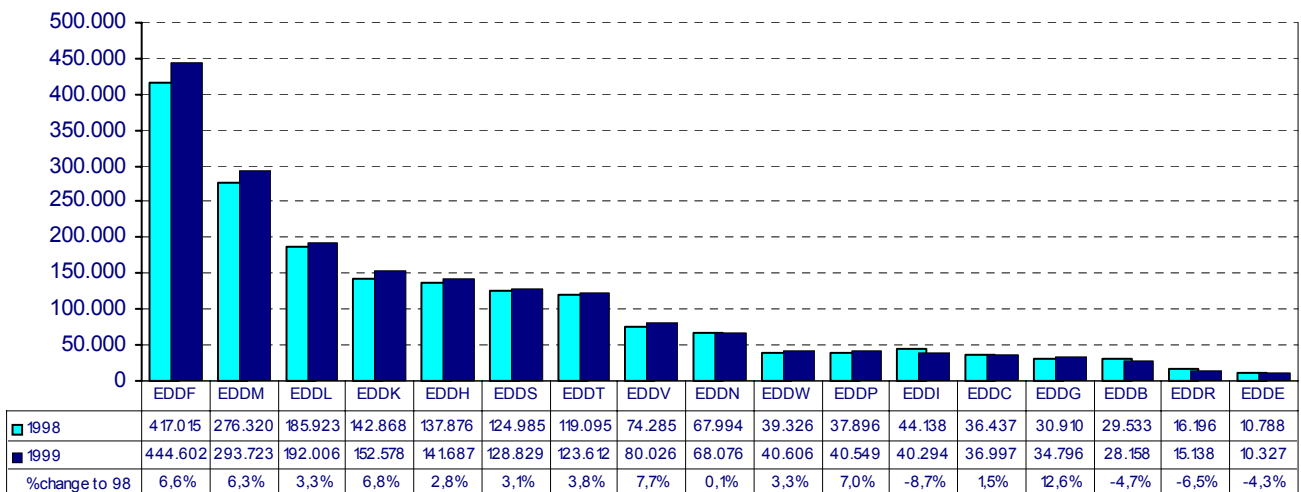


IFR take-offs and landings at regional airports

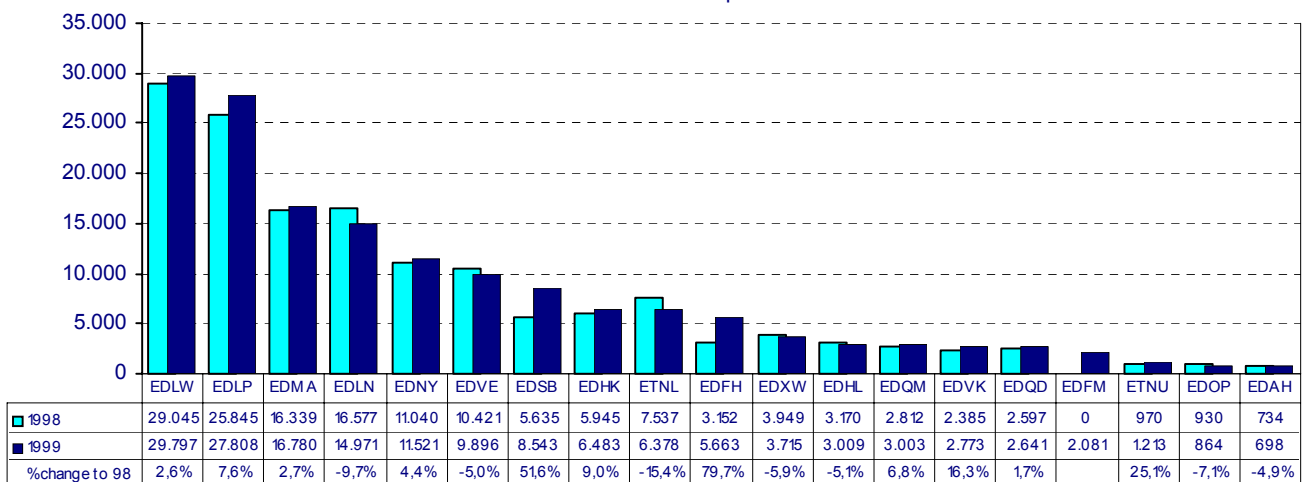
Augsburg, Bayreuth, Braunschweig, Dortmund, Friedrichshafen, Hahn, Heringsdorf, Hof, Karlsruhe-Baden, Kassel, Kiel, Laage, Lübeck, Mannheim, Mönchengladbach, Neubrandenburg, Paderborn, Schwerin, Westerland.



Traffic count of IFR departures and arrivals at international and regional airports 1999



International airports



Regional airports